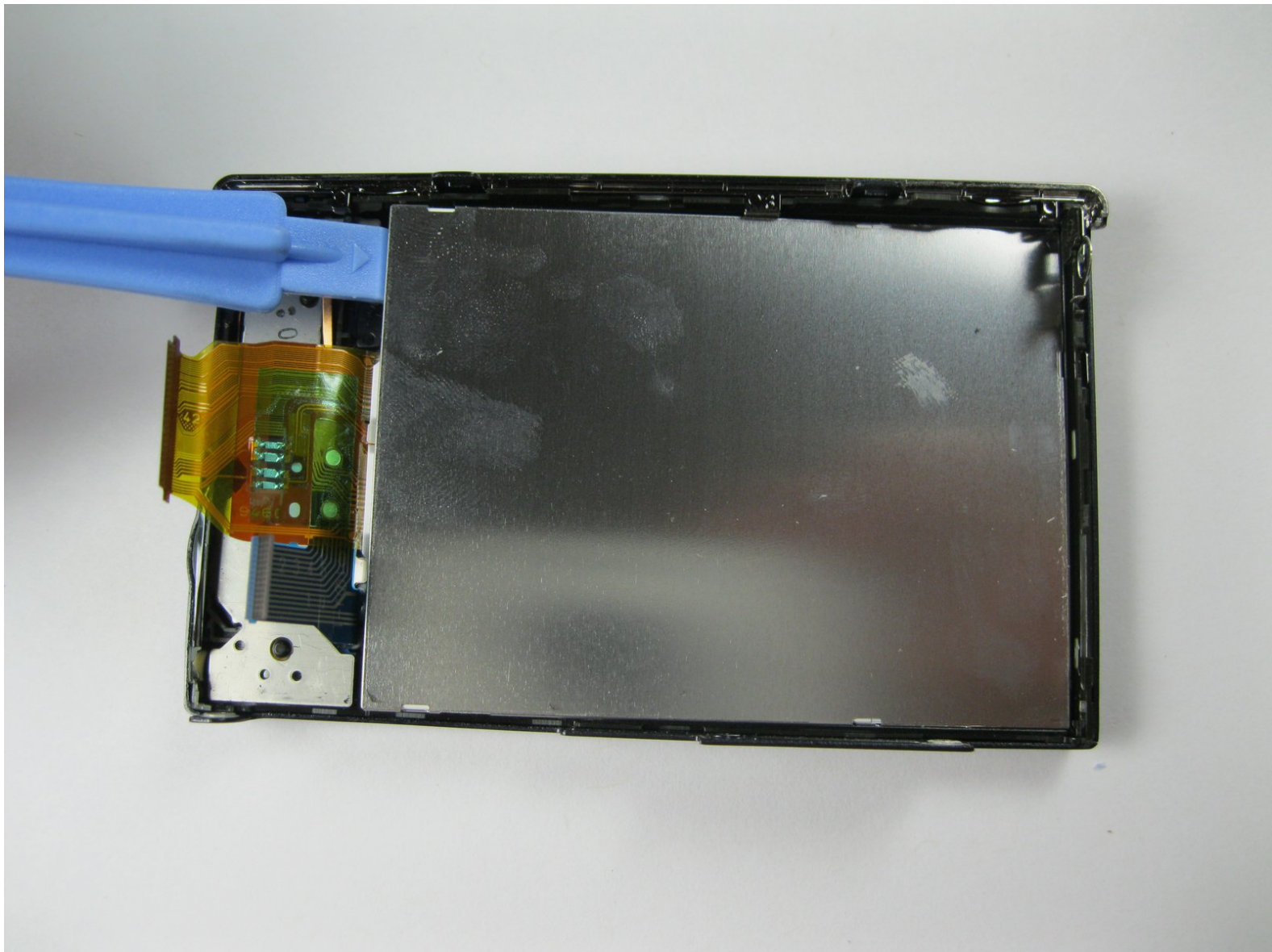




Nikon COOLPIX S610c LCD Replacement

This guide will take you through the steps of removing and installing the LCD screen.

Written By: Kevin Backers



INTRODUCTION

If your screen has stopped working or needs to be replaced for some other reason, follow this guide to remove your current screen.

TOOLS:

- [Phillips #00 Screwdriver](#) (1)
 - [Spudger](#) (1)
-

Step 1 — Battery



- On the bottom right of the camera, locate the battery flap switch.

Step 2



- Move this switch to the right so the battery flap can flip open.

Step 3



- Slide the orange switch to the right as shown. Now the battery can be pulled out. Reverse these steps to re-install.

Step 4 — Rear Casing



- Remove the three 3x3mm screws attached to the rear casing.

Step 5



- i The panel can be identified by the wifi logo on its upper half on the camera's side.
- Remove the 5x3mm screw holding down the panel on the side closest to the lens.

Step 6



- Pry the panel off from the bottom using your fingernail.

Step 7



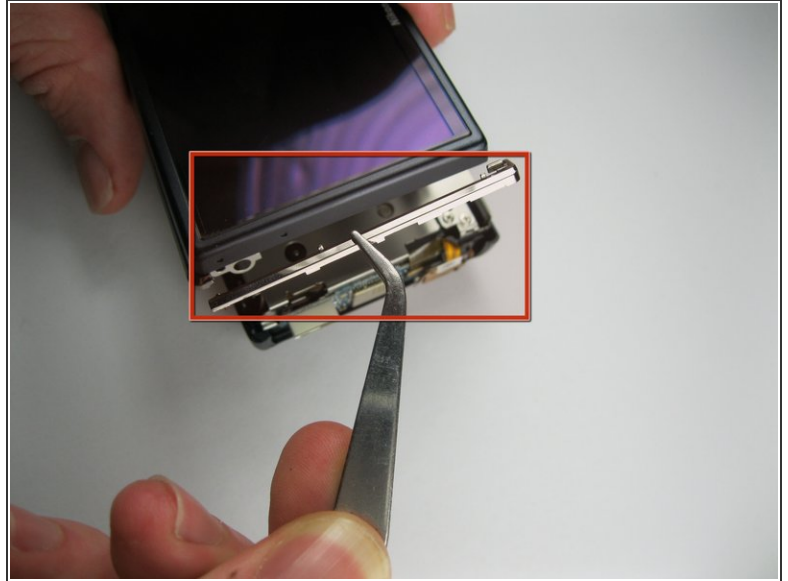
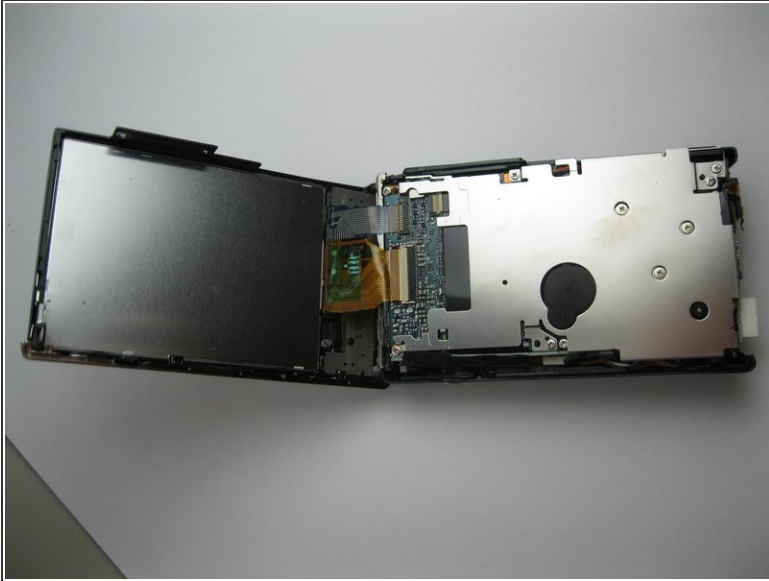
- Remove the 3x2mm screw underneath the panel near the top of the camera.

Step 8



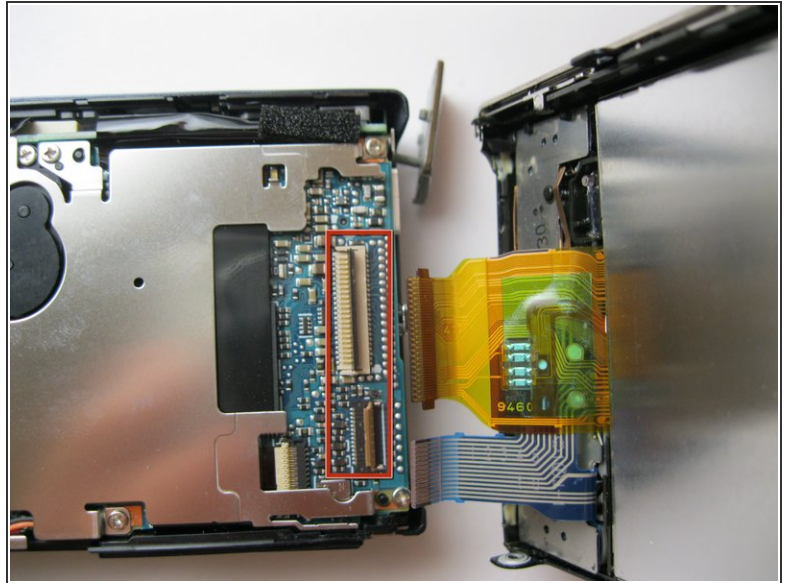
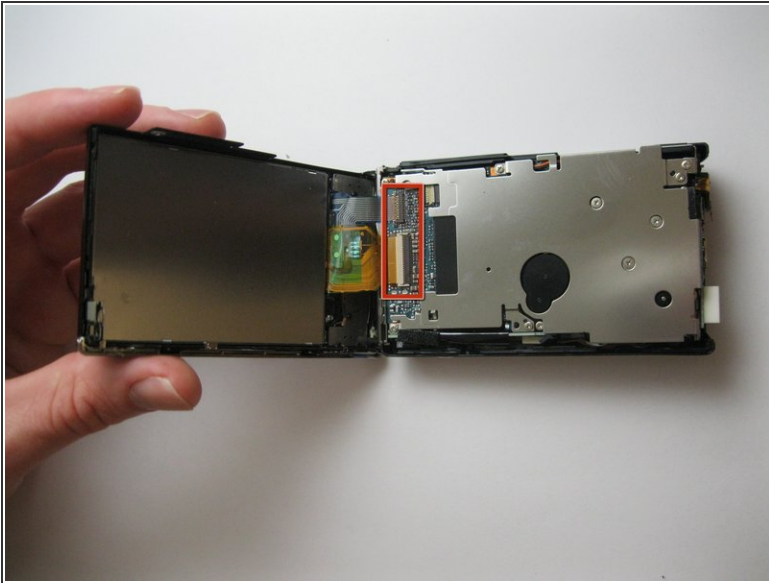
- Remove the 4x3mm on the opposite side near the selector wheel.
- Remove the 2x2mm and 3x2mm screws underneath the a/v flap.

Step 9



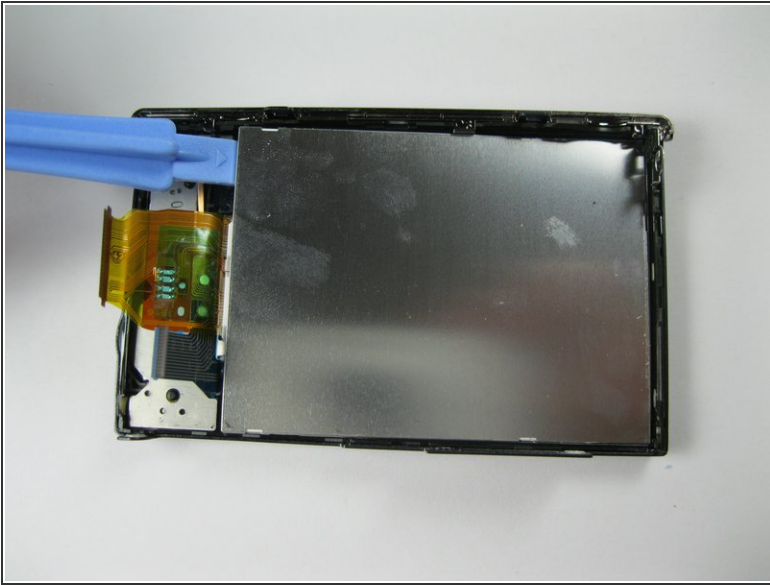
- Pry the back panel away from the body of the camera, using the space you just opened up.
- ⚠ Be careful not to damage the ribbon cable on the opposite end of the camera.
- A small piece of the frame of the camera may fall off, but it can be easily put back into place during reassembly.

Step 10



- Pry up the plastic ribbon connectors on the body of the camera to release the ribbon cables.
- ⓘ The center connector is detached by flipping the black latch up and away from the center of the camera.
- ⓘ The smaller connector is detached by flipping the tan latch up and away from the edge of the camera.

Step 11 — LCD



- Pry the display from the rear casing using a spudger.

To reassemble your device, follow these instructions in reverse order.