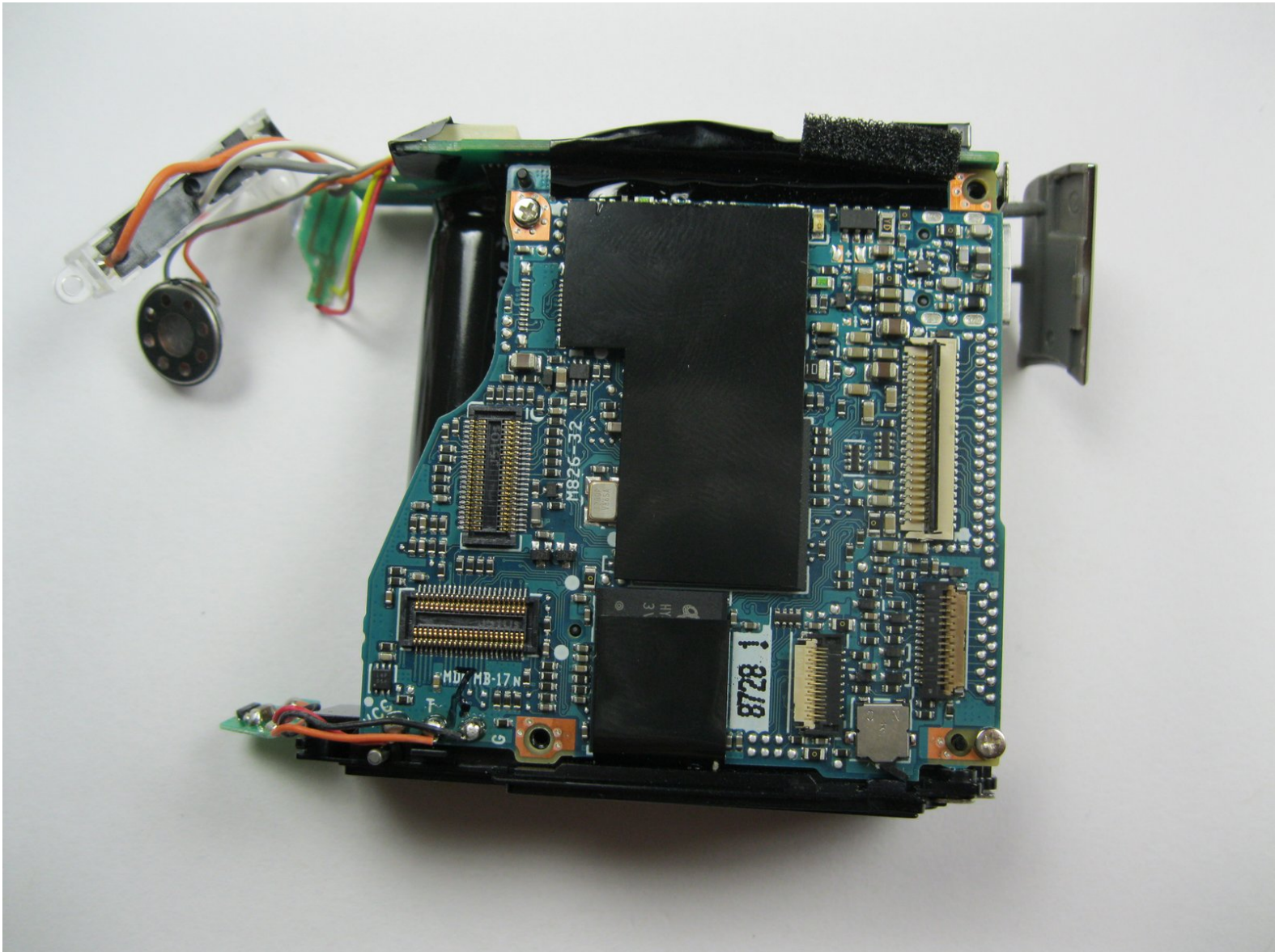




Nikon COOLPIX S610c Motherboard Replacement

This guide takes you through the steps of removing and installing the motherboard.

Written By: Kevin Backers



INTRODUCTION

If camera no longer works at all, then it might be time to replace the motherboard. Follow this guide to remove the motherboard from your camera.



TOOLS:

- [Phillips #00 Screwdriver](#) (1)
 - [Spudger](#) (1)
-

Step 1 — Rear Casing



- Remove the three 3x3mm screws attached to the rear casing.

Step 2



- ① The panel can be identified by the wifi logo on its upper half on the camera's side.
- Remove the 5x3mm screw holding down the panel on the side closest to the lens.

Step 3



- Pry the panel off from the bottom using your fingernail.

Step 4



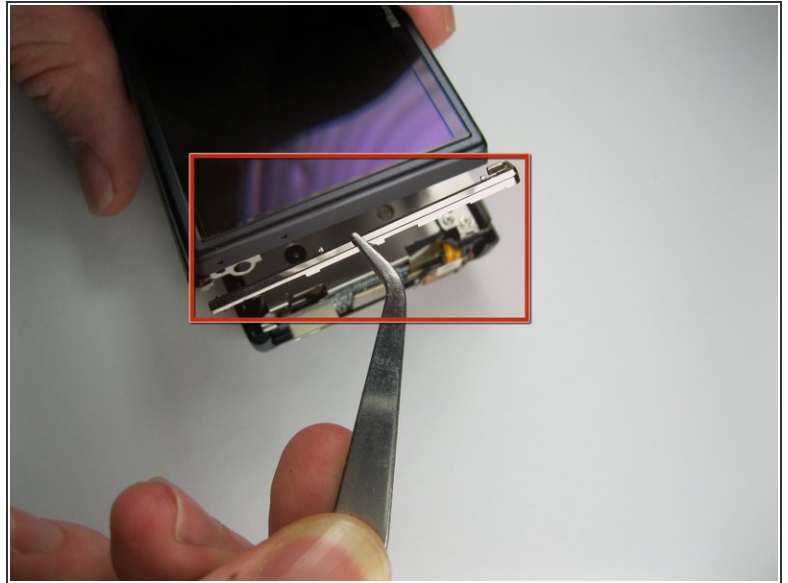
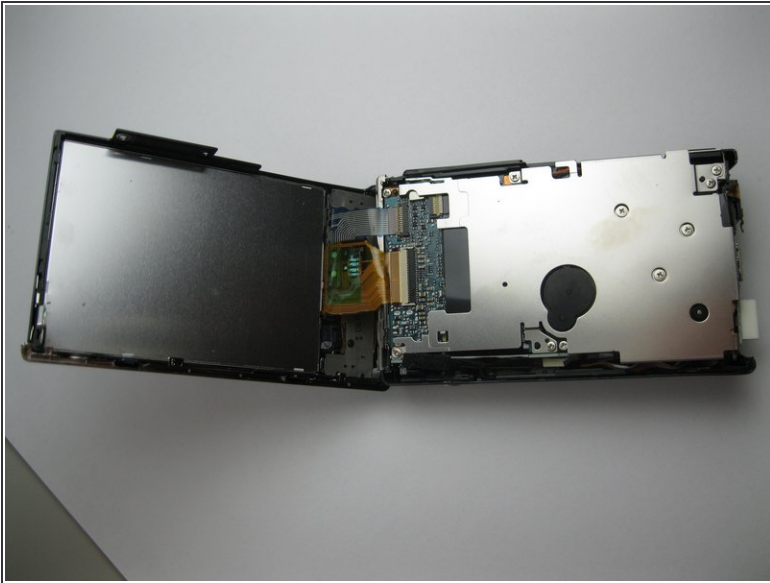
- Remove the 3x2mm screw underneath the panel near the top of the camera.

Step 5



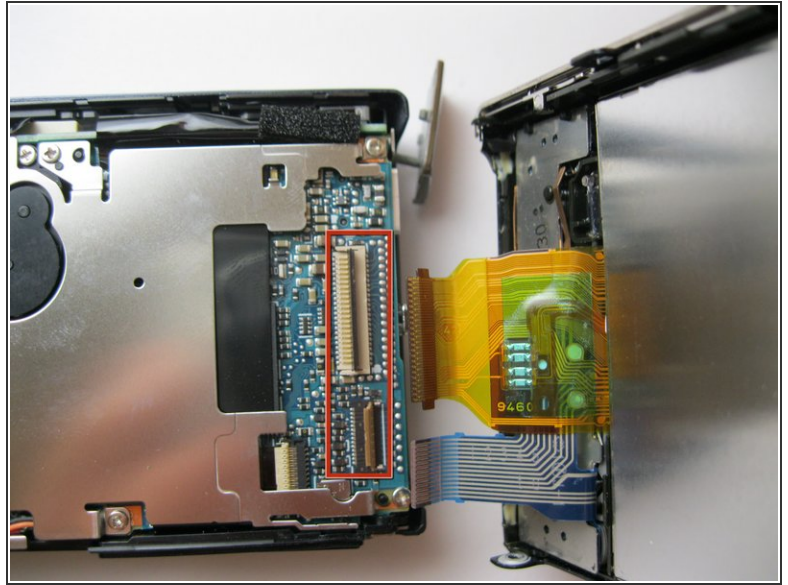
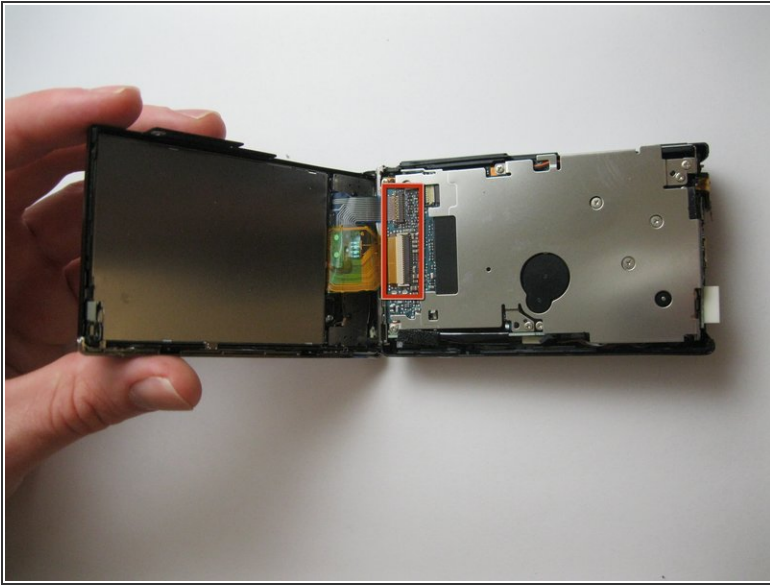
- Remove the 4x3mm on the opposite side near the selector wheel.
- Remove the 2x2mm and 3x2mm screws underneath the a/v flap.

Step 6



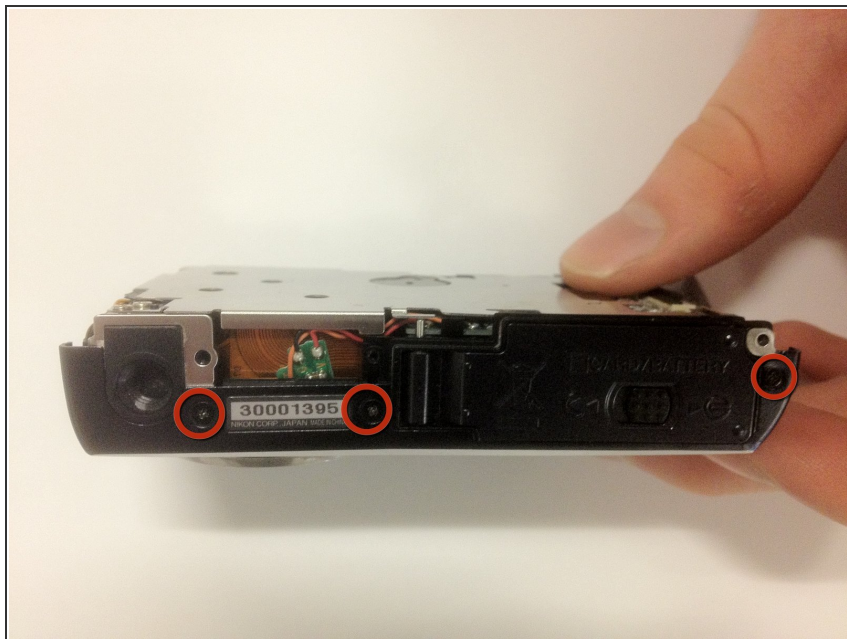
- Pry the back panel away from the body of the camera, using the space you just opened up.
- ⚠ Be careful not to damage the ribbon cable on the opposite end of the camera.
- A small piece of the frame of the camera may fall off, but it can be easily put back into place during reassembly.

Step 7



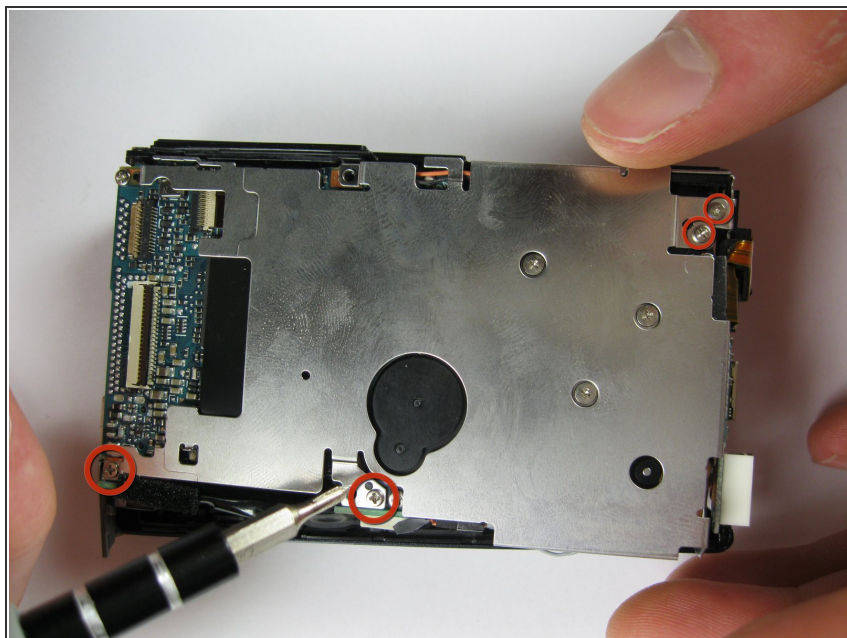
- Pry up the plastic ribbon connectors on the body of the camera to release the ribbon cables.
- ⓘ The center connector is detached by flipping the black latch up and away from the center of the camera.
- ⓘ The smaller connector is detached by flipping the tan latch up and away from the edge of the camera.

Step 8 — Front Casing



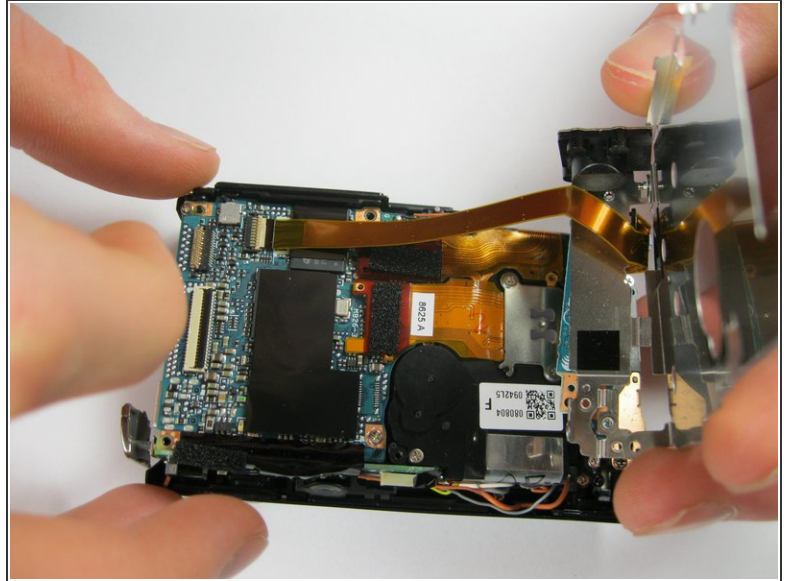
- Remove the three 3x3mm screws that attach the front casing to the bottom.

Step 9



- Remove the two 3x2 screws and two 3.5x2.5 screws attaching the rear panel to the motherboard.

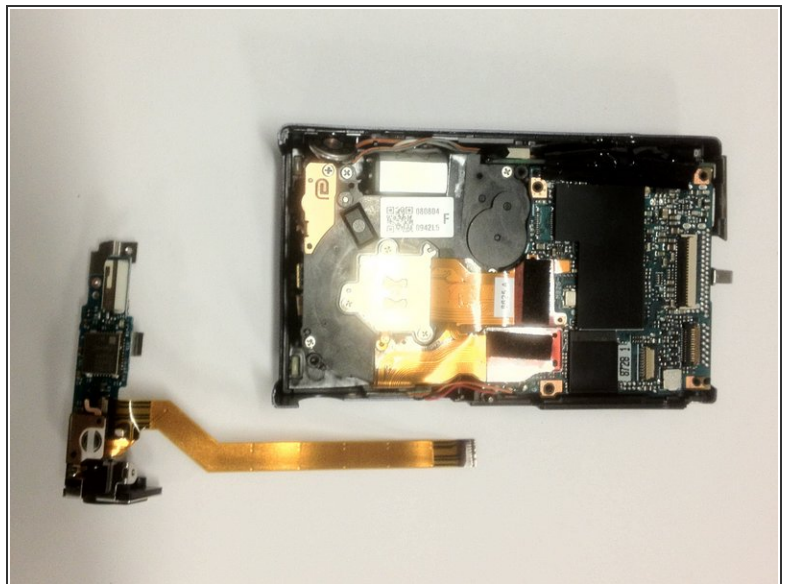
Step 10



- Lift the back panel off the motherboard.

⚠ Be careful not to damage the ribbon cable that attaches the mother board to the rear panel.

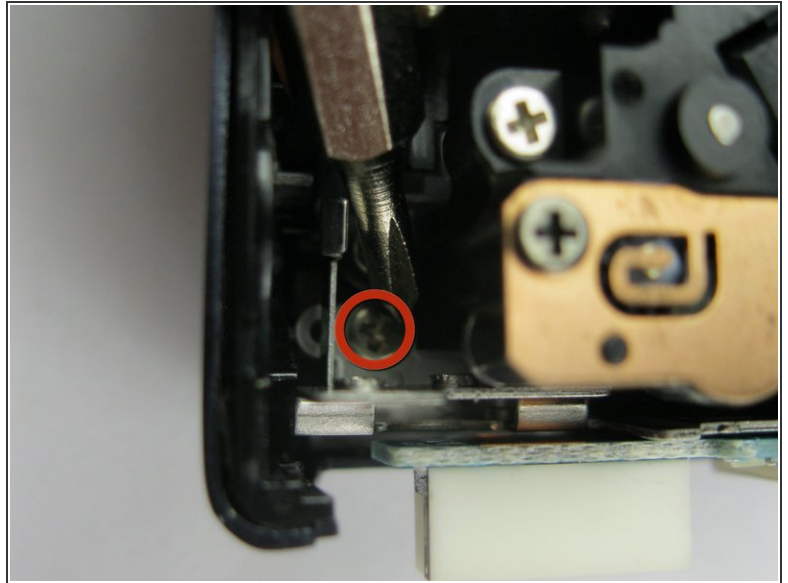
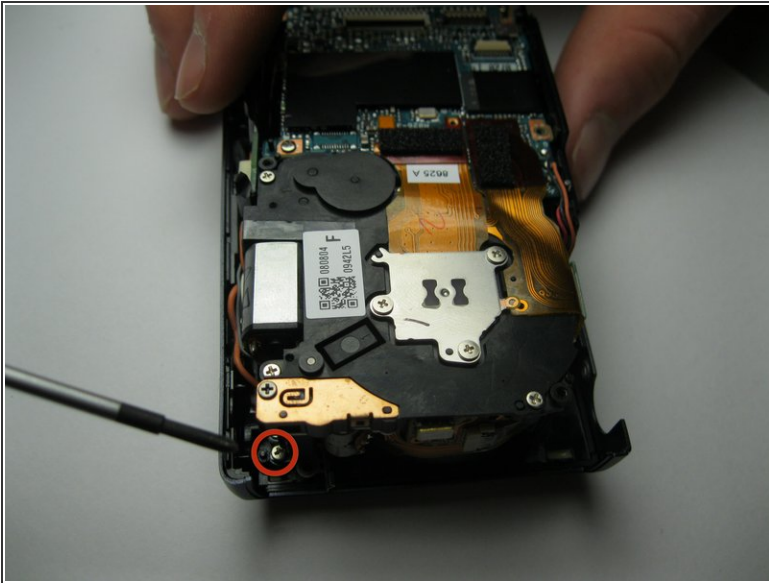
Step 11



- Detach the ribbon cable from the motherboard by flipping up the latch on the ribbon connector.

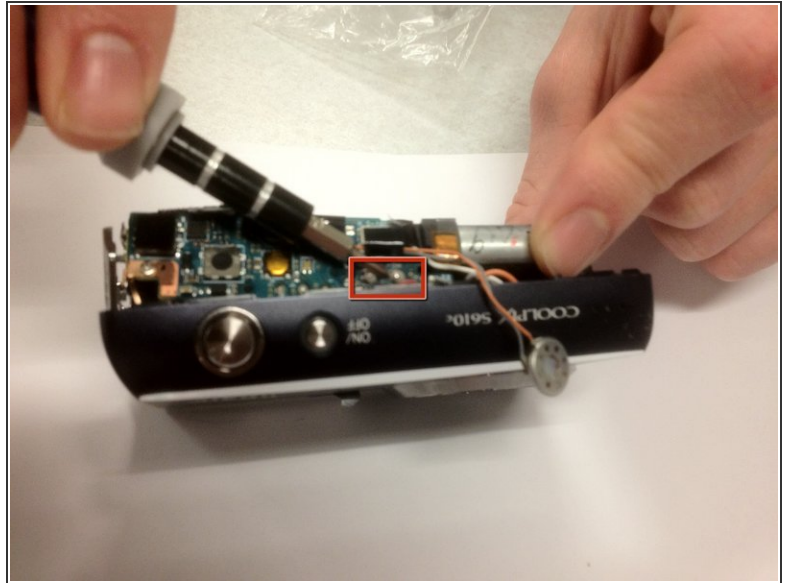
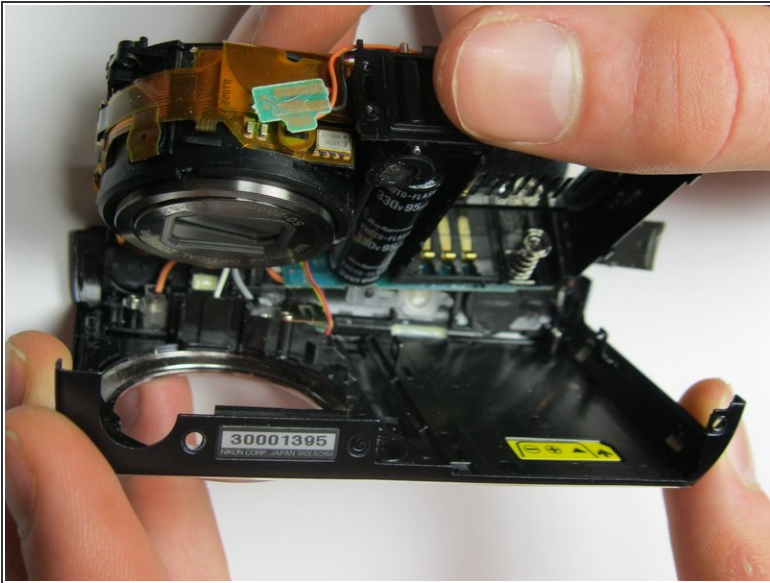
i Note that the white ribbon connector latch flips away from the ribbon cable.

Step 12



- Remove the final 4x3mm screw at the top of the camera near the lens.

Step 13



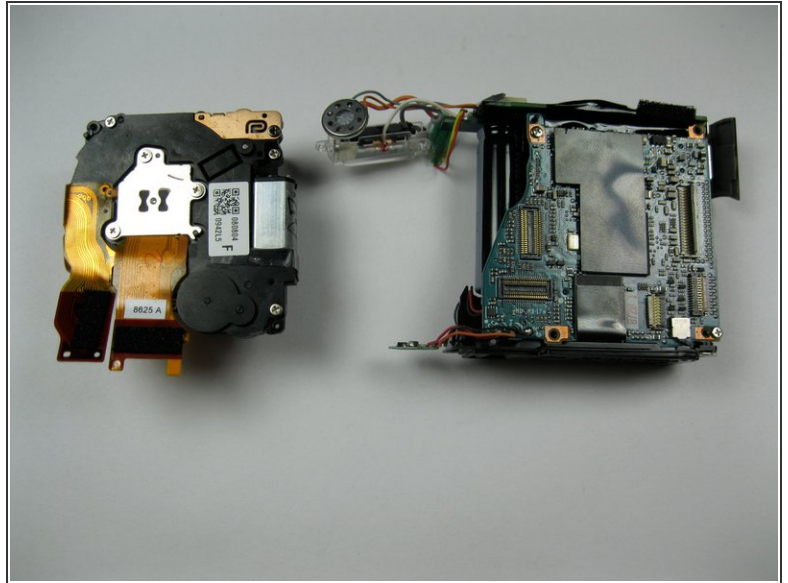
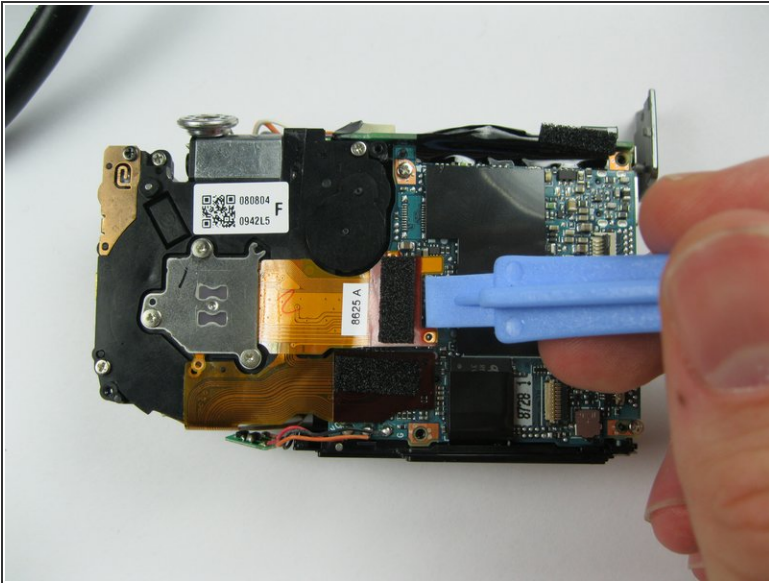
- Pry the front casing away from the body of the camera.
- ⚠ Be careful not to damage the wires that attach the front panel to the motherboard.
- ⚠ Short the leads on the capacitor near the flash to avoid a nasty shock when separating the casing from the body.

Step 14



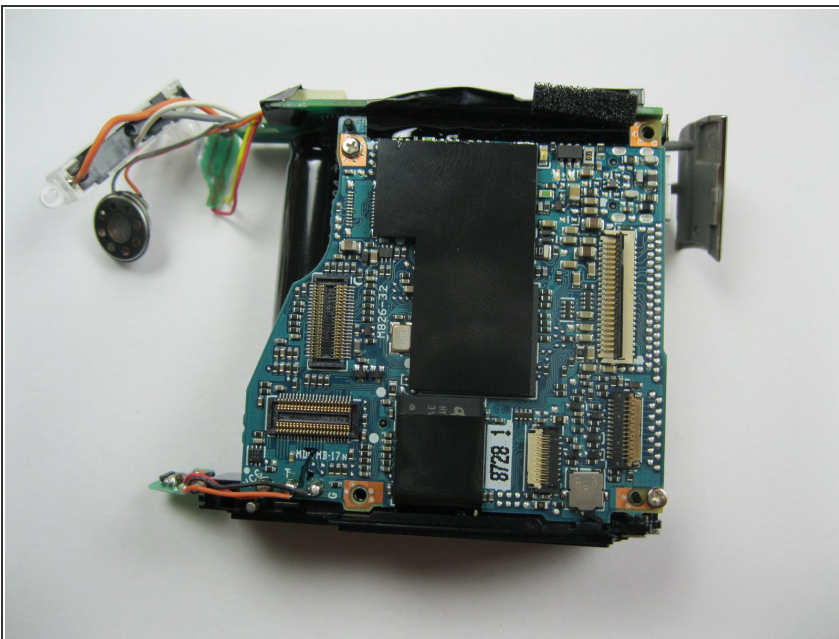
- Unscrew the three 3x2mm screws that attach the cables to the front casing.

Step 15 — Lens Assembly



- Pry up the ribbon connector that connects the ribbon cable to the lens assembly.
- ⓘ Take note that the ribbon connector pulls away from the ribbon.

Step 16 — Motherboard



- Once the lens assembly has been removed, the mother board cannot be disassembled any further.

To reassemble your device, follow these instructions in reverse order.