



Nikon COOLPIX S9500 LCD Screen Replacement

This guide will show you how to replace the main LCD view screen.

Written By: Jim Bui



INTRODUCTION

If the screen does not power on, even when the camera itself is powered on, the LCD screen could be broken. This guide will show the proper instructions for replacing the screen.

TOOLS:

- [Phillips #00 Screwdriver](#) (1)
 - [iFixit Opening Tools](#) (1)
-

Step 1 — Removing Screws



- Remove the three 4 mm screws from the bottom of the camera using a #00 Phillips screwdriver.
- Remove the single 3.5 mm screw from the bottom of the camera using a #00 Phillips screwdriver.

Step 2



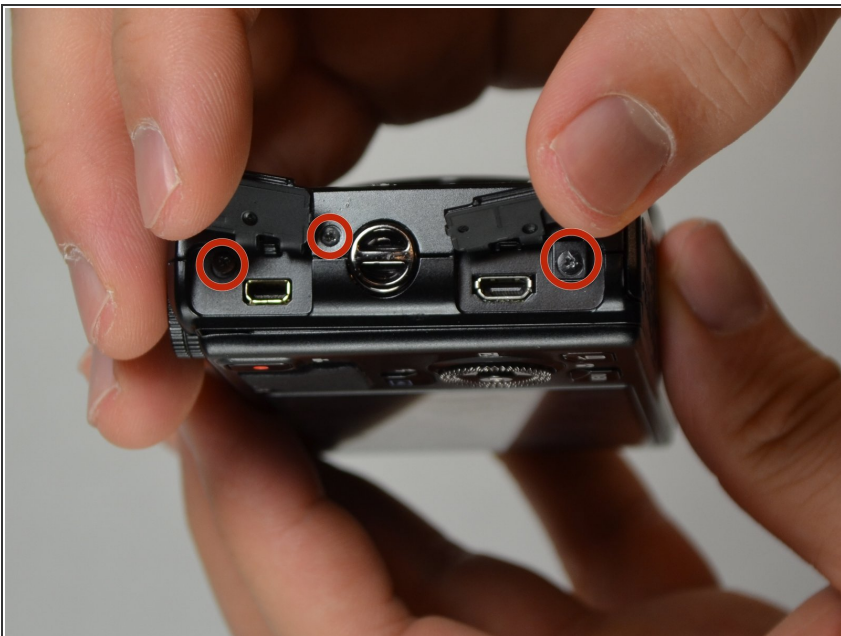
- With the bottom of the camera facing you, slide the latch on the compartment to the left.
- Swing the battery compartment door open.
- Remove the 3.5 mm screw from the inside with a #00 Phillips screwdriver.

Step 3



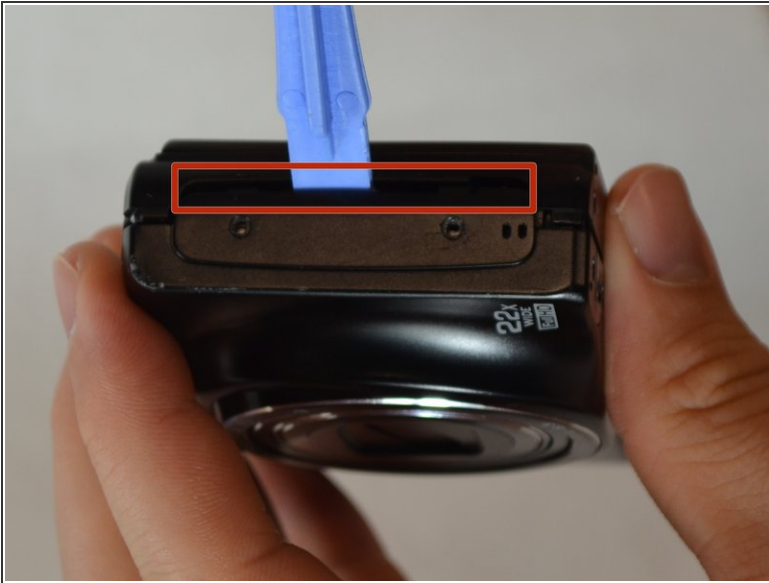
- With the screen facing you, locate the two 3.5 mm screws on the left face of the camera. Remove them using a #00 Phillips screwdriver.

Step 4



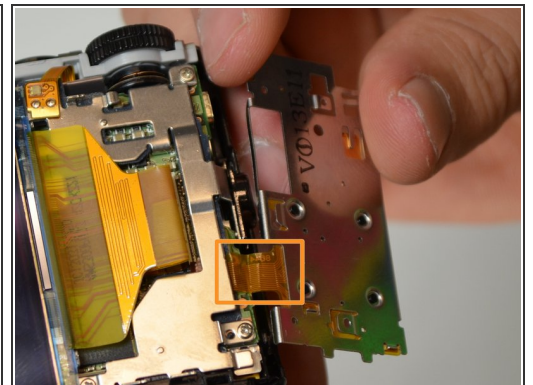
- With the screen facing you, locate the three 3.5 mm screws on the right face of the camera. Remove them with a #00 Phillips screwdriver.
- ⓘ Two of the screws are located under the port tabs.

Step 5



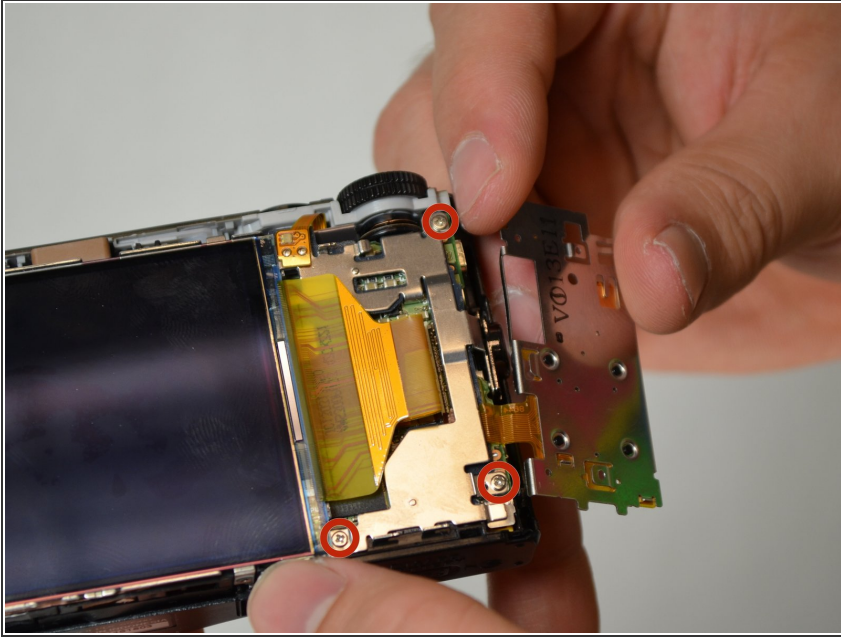
- Locate the crease where the case comes together.
- Using a plastic prying tool, pry at the line to remove the camera case.
- ⓘ It may take several attempts to remove the case. Remember to pry at all the crease locations on the camera, and not just one spot.

Step 6 — Navigation Panel Removal



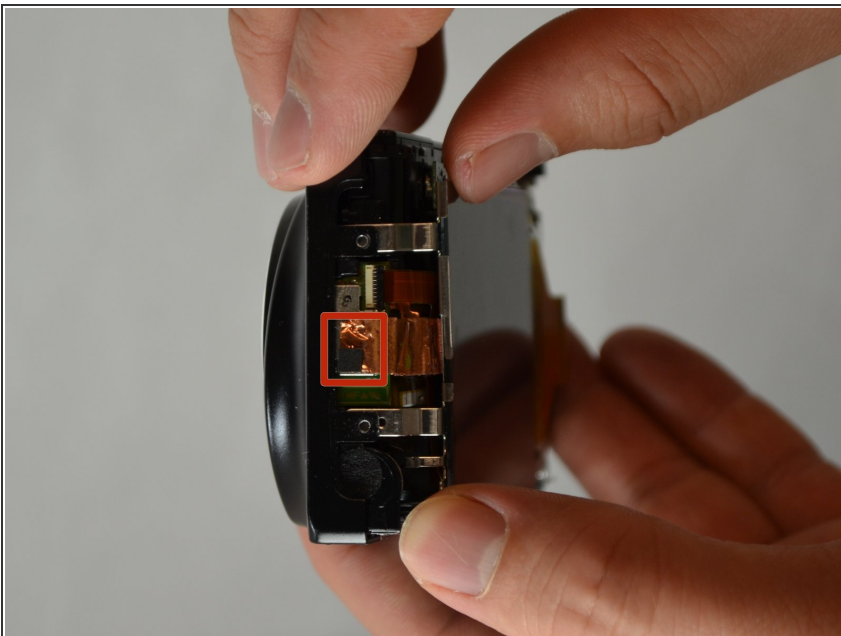
- Slide the yellow navigation panel to the right so that it can be lifted up.
- ⓘ It may take a little pressure to get the panel to separate.
- ⚠ Be careful not to damage the ribbon cable that is still attached to the camera.

Step 7



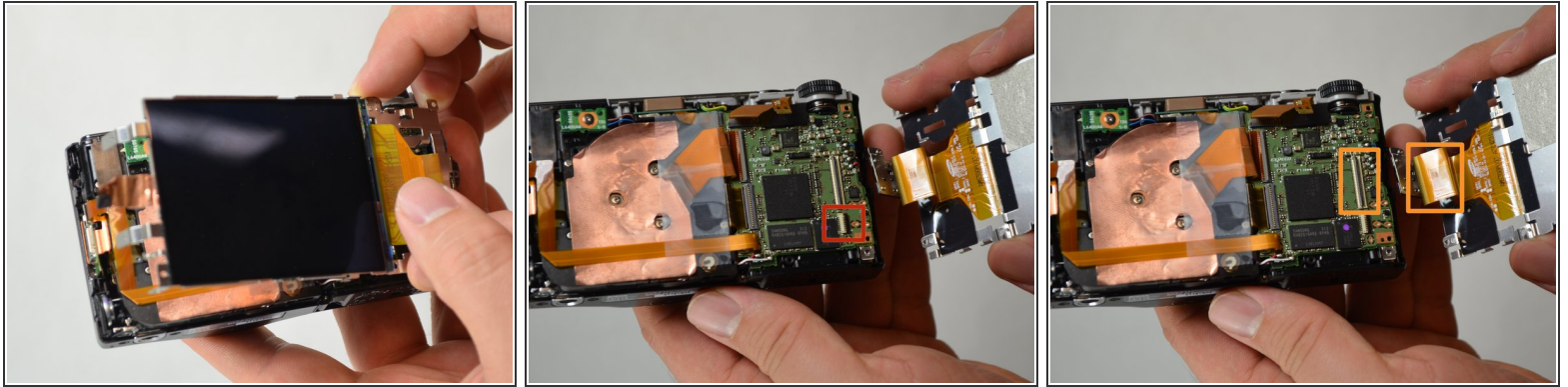
- Remove the three 4 mm screws with a #00 Phillips screwdriver.

Step 8



- Locate the magnet and copper tape on the left side of the camera.
- Gently pull the copper tape off of the metal plate.
- ⓘ The copper tape is attached with some glue, so a little force will be needed to detach it.

Step 9



- Lift the screen up and swing it to the right, exposing the circuit board underneath.
- ⓘ The navigation panel should still be attached to the circuit board with a ribbon cable as indicated in red.
- Detach the ribbon cable that is connecting the LCD screen and the circuit board.

To reassemble your device, follow these instructions in reverse order.