



Nikon COOLPIX S9500 Lens Replacement

Replacing the lens unit in the camera.

Written By: Jim Bui



INTRODUCTION

If the lens is not working properly or giving a lens error, you need to take it out to inspect or replace it.



TOOLS:

- [Phillips #00 Screwdriver](#) (1)
 - [iFixit Opening Tools](#) (1)
-

Step 1 — Removing Screws



- Remove the three 4 mm screws from the bottom of the camera using a #00 Phillips screwdriver.
- Remove the single 3.5 mm screw from the bottom of the camera using a #00 Phillips screwdriver.

Step 2



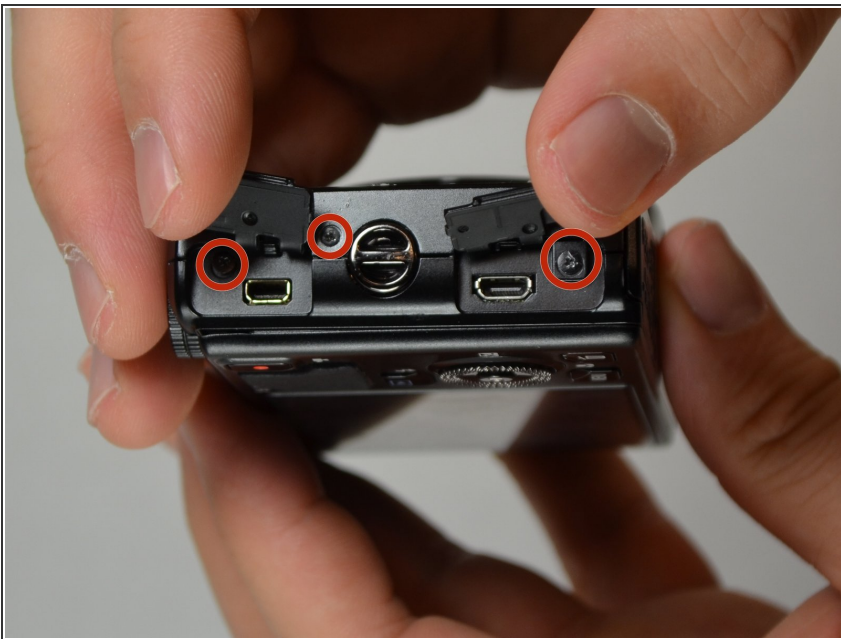
- With the bottom of the camera facing you, slide the latch on the compartment to the left.
- Swing the battery compartment door open.
- Remove the 3.5 mm screw from the inside with a #00 Phillips screwdriver.

Step 3



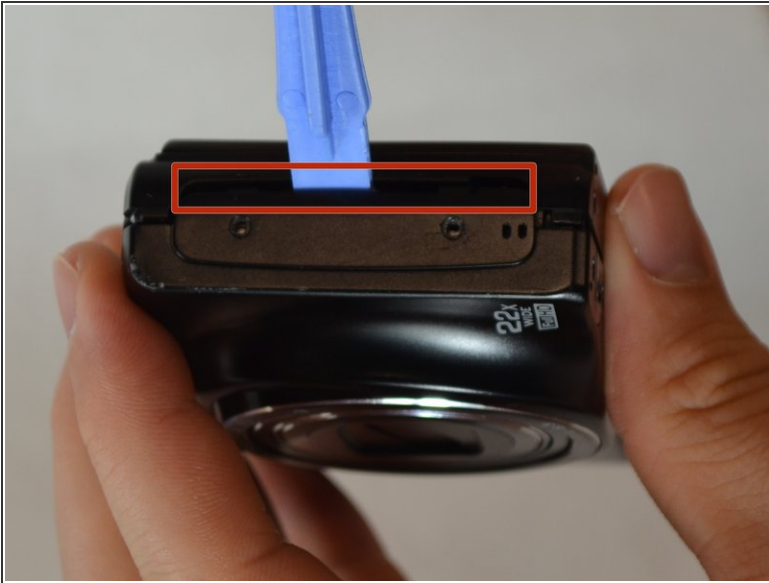
- With the screen facing you, locate the two 3.5 mm screws on the left face of the camera. Remove them using a #00 Phillips screwdriver.

Step 4



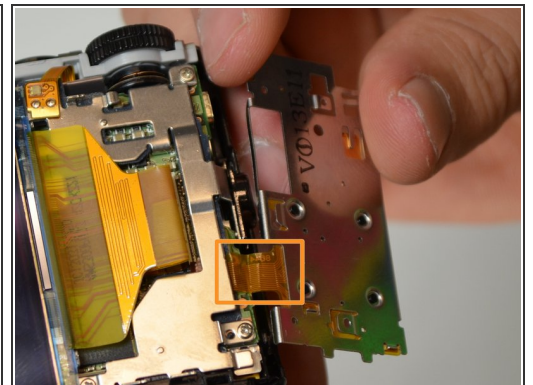
- With the screen facing you, locate the three 3.5 mm screws on the right face of the camera. Remove them with a #00 Phillips screwdriver.
- ⓘ Two of the screws are located under the port tabs.

Step 5



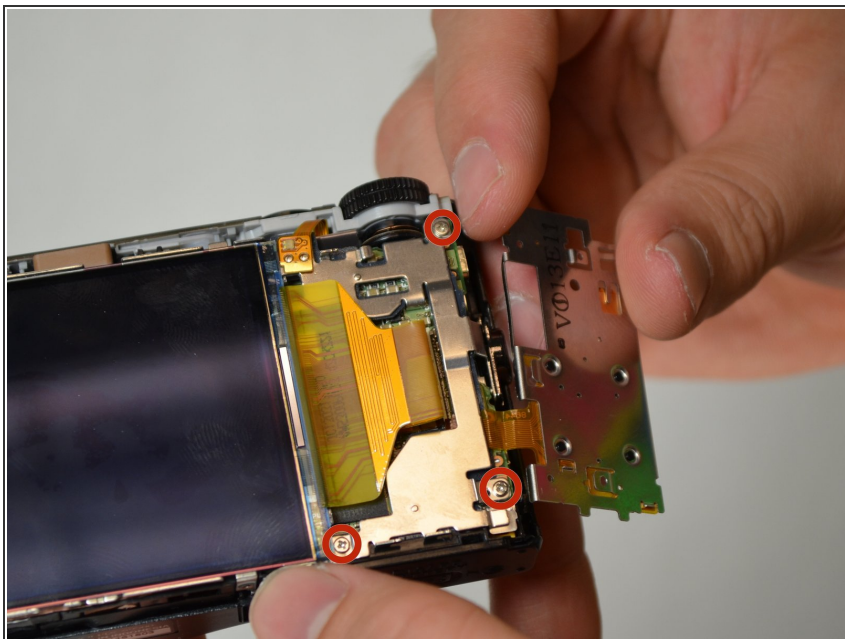
- Locate the crease where the case comes together.
- Using a plastic prying tool, pry at the line to remove the camera case.
- ⓘ It may take several attempts to remove the case. Remember to pry at all the crease locations on the camera, and not just one spot.

Step 6 — Navigation Panel Removal



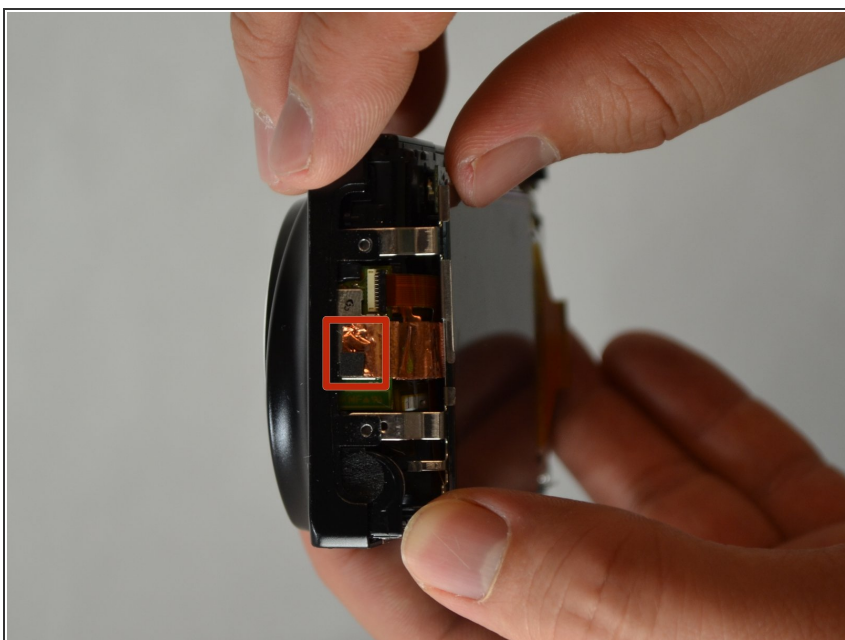
- Slide the yellow navigation panel to the right so that it can be lifted up.
- ⓘ It may take a little pressure to get the panel to separate.
- ⚠ Be careful not to damage the ribbon cable that is still attached to the camera.

Step 7



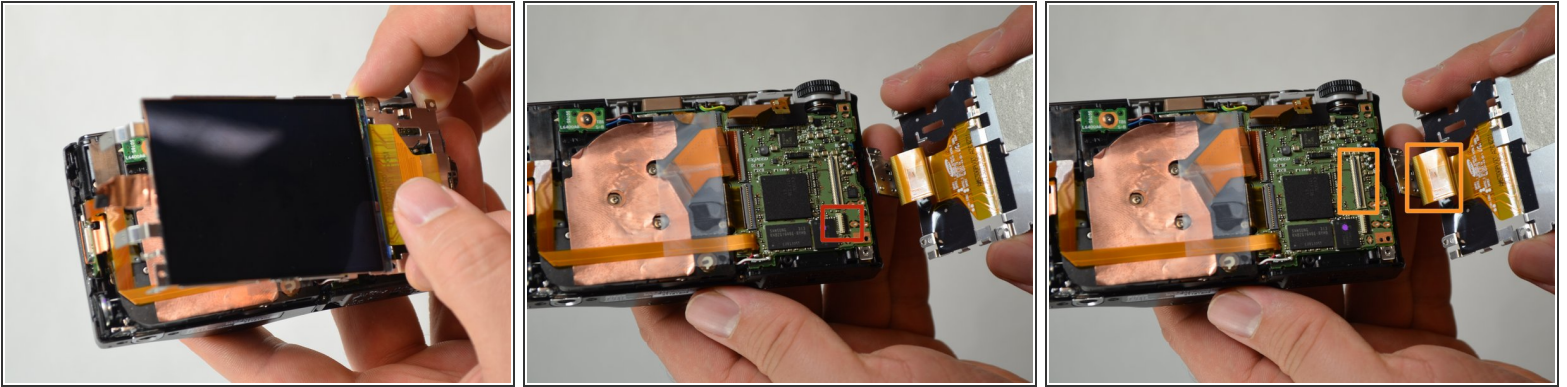
- Remove the three 4 mm screws with a #00 Phillips screwdriver.

Step 8



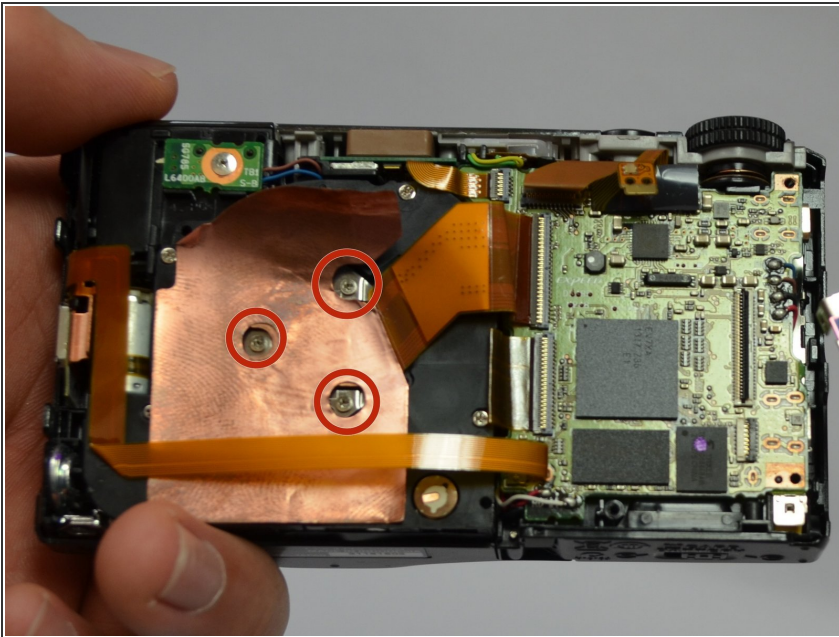
- Locate the magnet and copper tape on the left side of the camera.
- Gently pull the copper tape off of the metal plate.
- ⓘ The copper tape is attached with some glue, so a little force will be needed to detach it.

Step 9



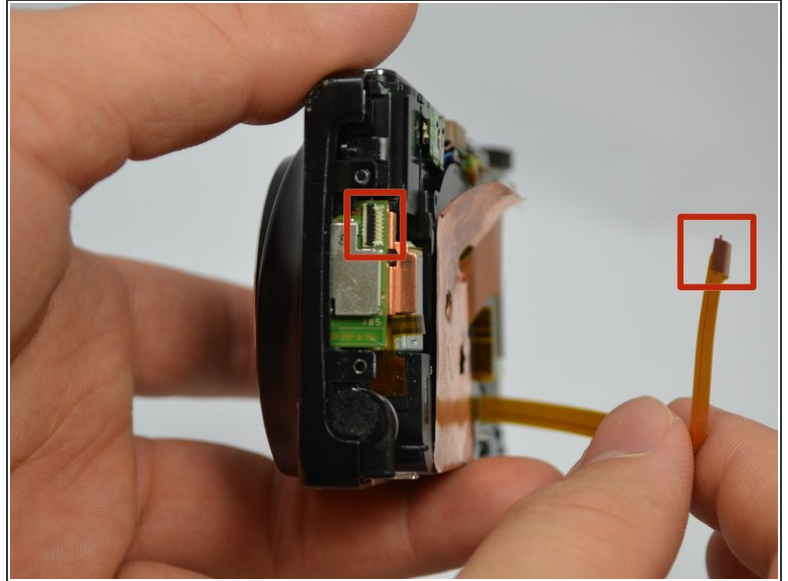
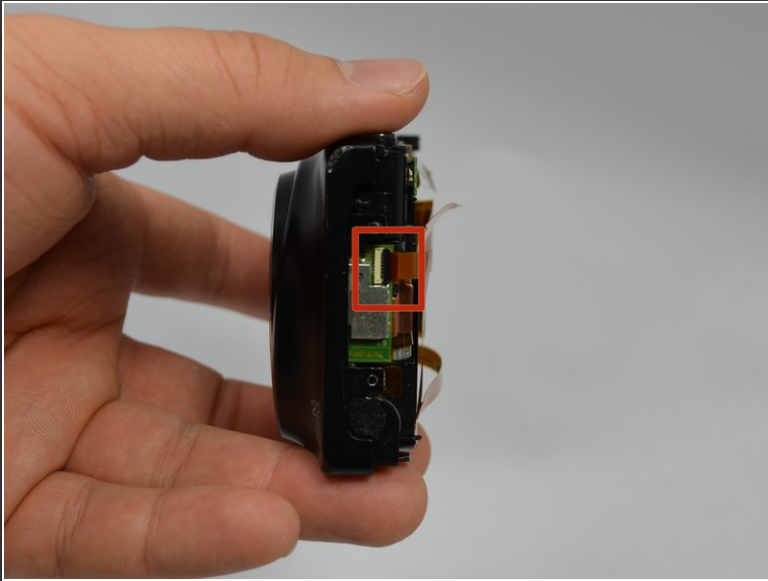
- Lift the screen up and swing it to the right, exposing the circuit board underneath.
- ⓘ The navigation panel should still be attached to the circuit board with a ribbon cable as indicated in red.
- Detach the ribbon cable that is connecting the LCD screen and the circuit board.

Step 10 — Lens



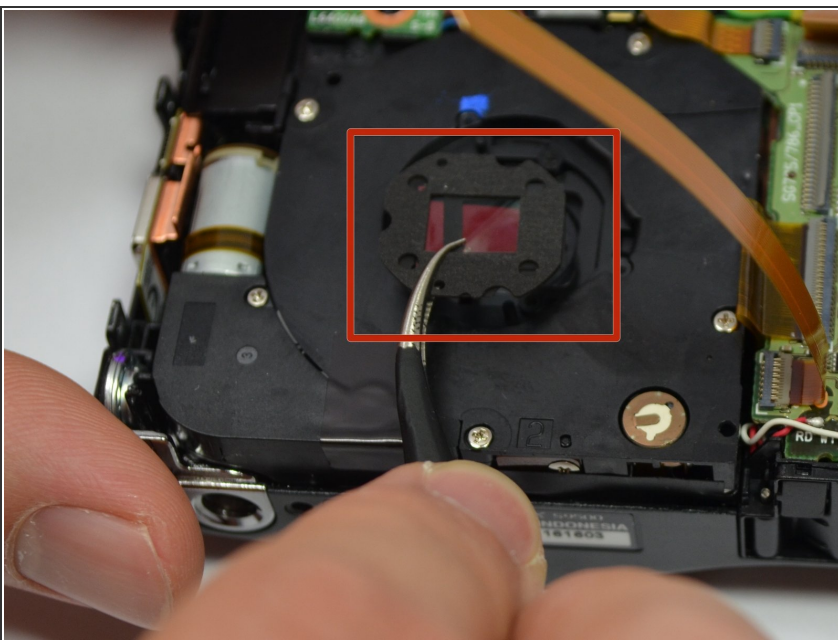
- Remove the three 4 mm screws using a #00 Phillips screwdriver.

Step 11



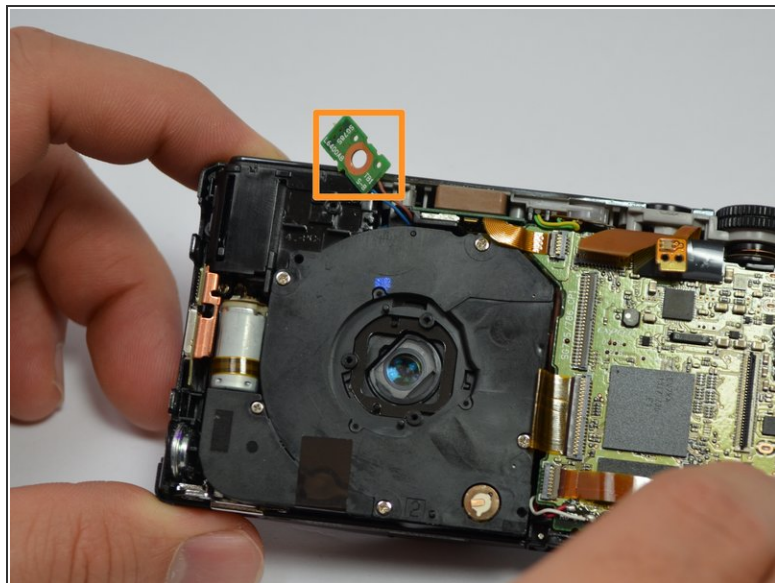
- Disconnect the ribbon cable from the left side of the camera.
- You can do this by lifting the small black strip with your nail and rotating it 60 degrees on top of the connector. These connectors are fragile so don't use too much force. Now you can easily take the flat cable out (same for the other connectors).

Step 12



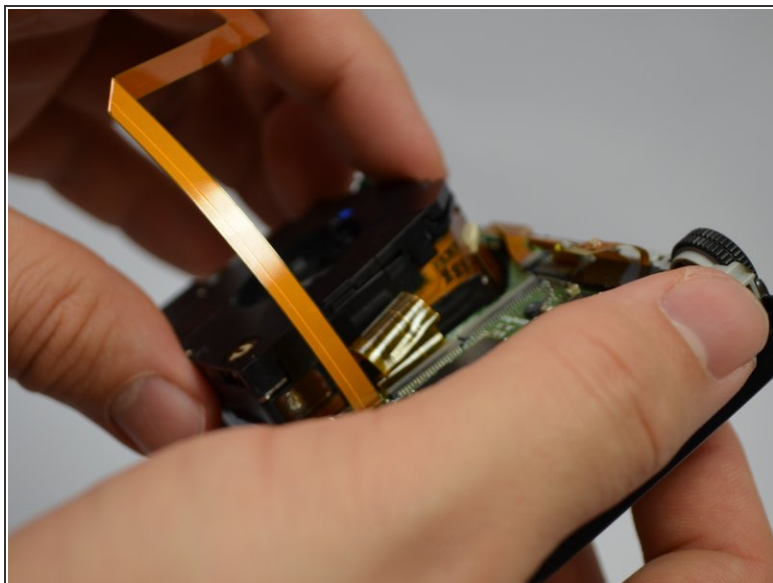
- Using tweezers, remove the lens cover from the lens.
- ⚠ Be sure not to damage this delicate piece.

Step 13



- Remove the 3.5 mm screw holding down the Wi-Fi card.
 - Move the Wi-Fi card away from the device.
- ⚠ The Wi-Fi card is not actually detached yet. Be careful not to damage the wires.

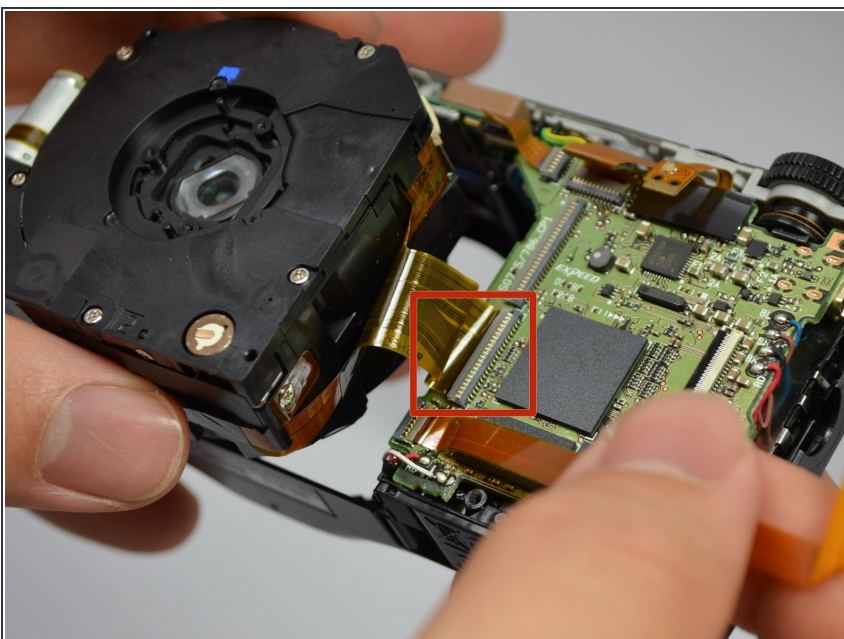
Step 14



- Using your fingers, push the lens from the front of the camera to loosen it.
- Lift the lens unit from the other side so it is free from the case.

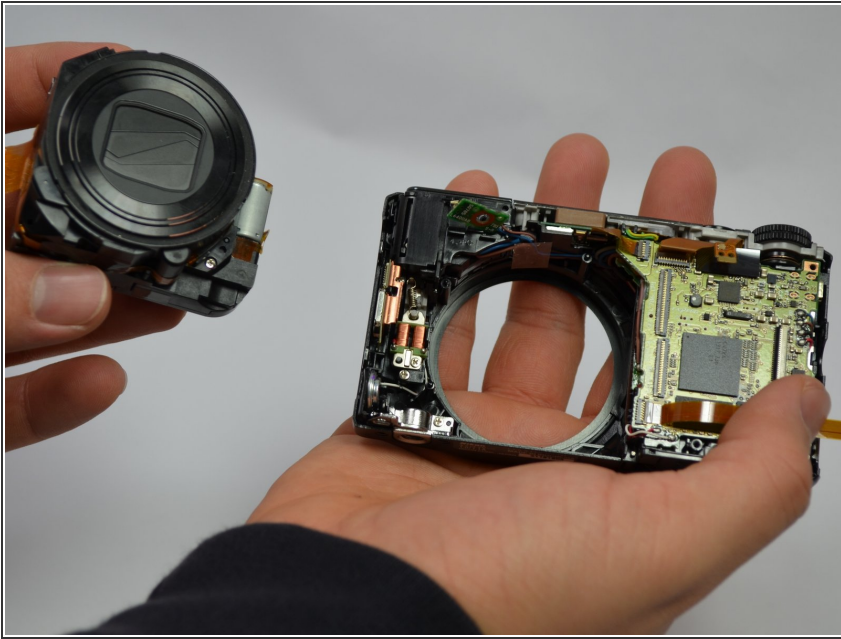
⚠ The lens unit is still connected by a ribbon cable.

Step 15



- Detach the ribbon cable connecting the lens unit and circuit board.

Step 16



- The lens can now be removed from the camera.

To reassemble your device, follow these instructions in reverse order.