



# Nikon COOLPIX S9500 Outer Case Replacement

This guide will show the proper instructions for disassembling the outer case. [PREREQUISITE ONLY]

Written By: Jim Bui



## INTRODUCTION

In order to access any of the inner parts of the camera, the outer case must be taken apart first.  
[PREREQUISITE ONLY]

---

### TOOLS:

- [Phillips #00 Screwdriver](#) (1)
  - [iFixit Opening Tools](#) (1)
-

## Step 1 — Removing Screws



- Remove the three 4 mm screws from the bottom of the camera using a #00 Phillips screwdriver.
- Remove the single 3.5 mm screw from the bottom of the camera using a #00 Phillips screwdriver.

## Step 2



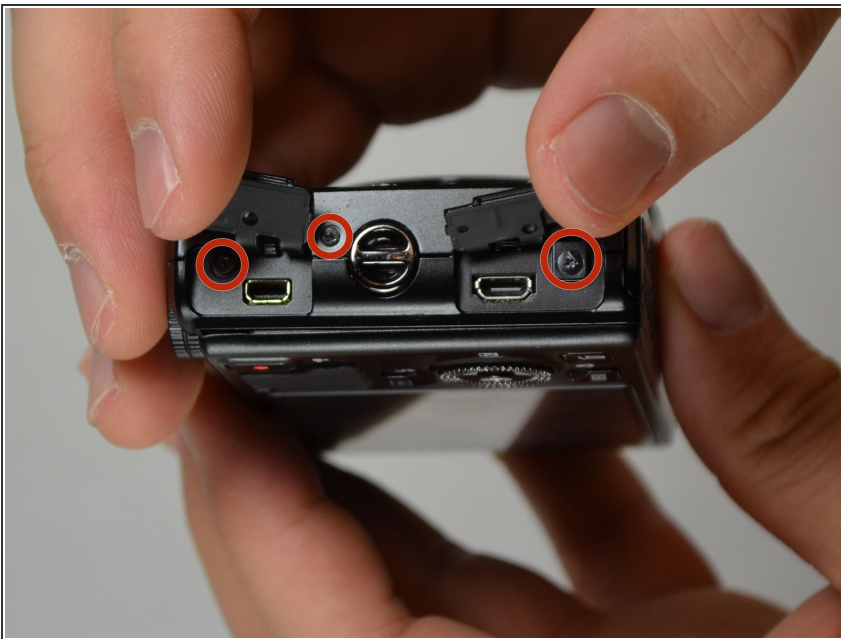
- With the bottom of the camera facing you, slide the latch on the compartment to the left.
- Swing the battery compartment door open.
- Remove the 3.5 mm screw from the inside with a #00 Phillips screwdriver.

### Step 3



- With the screen facing you, locate the two 3.5 mm screws on the left face of the camera. Remove them using a #00 Phillips screwdriver.

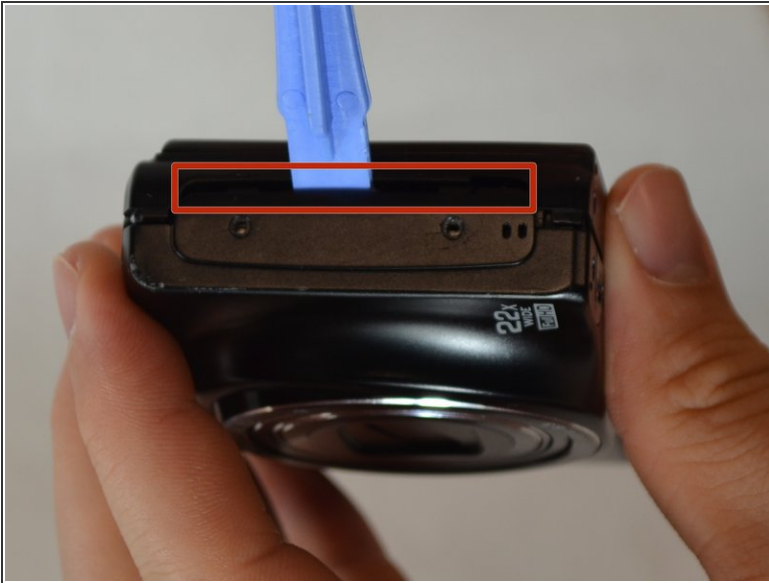
### Step 4



- With the screen facing you, locate the three 3.5 mm screws on the right face of the camera. Remove them with a #00 Phillips screwdriver.
- ⓘ Two of the screws are located under the port tabs.



## Step 5



- Locate the crease where the case comes together.
- Using a plastic prying tool, pry at the line to remove the camera case.
- ⓘ It may take several attempts to remove the case. Remember to pry at all the crease locations on the camera, and not just one spot.

To reassemble your device, follow these instructions in reverse order.