



# Nikon CoolPix P310 Sensor Replacement or Cleaning

How to remove and clean or replace the sensor of a Nikon CoolPix P310.

Written By: Alex AVRON



---

## INTRODUCTION

Sometimes, dust appear on all your pictures. It may only be a dust on the sensor. It's quite quick to remove. To check if the issue is coming from a sensor dust, you must have a blurry dot on all your pictures, that may or may not change in size and shape with different aperture. Check first that the dust is not on the lens.



### TOOLS:

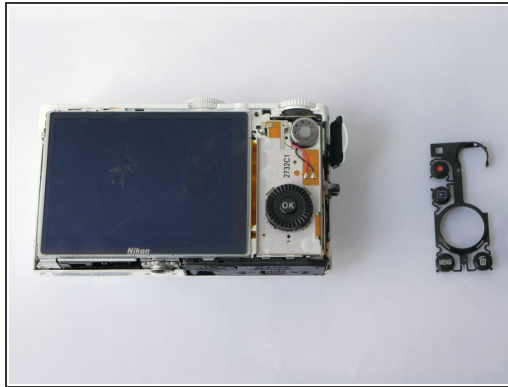
- [Essential Electronics Toolkit](#) (1)
-

## Step 1 — Opening the Camera



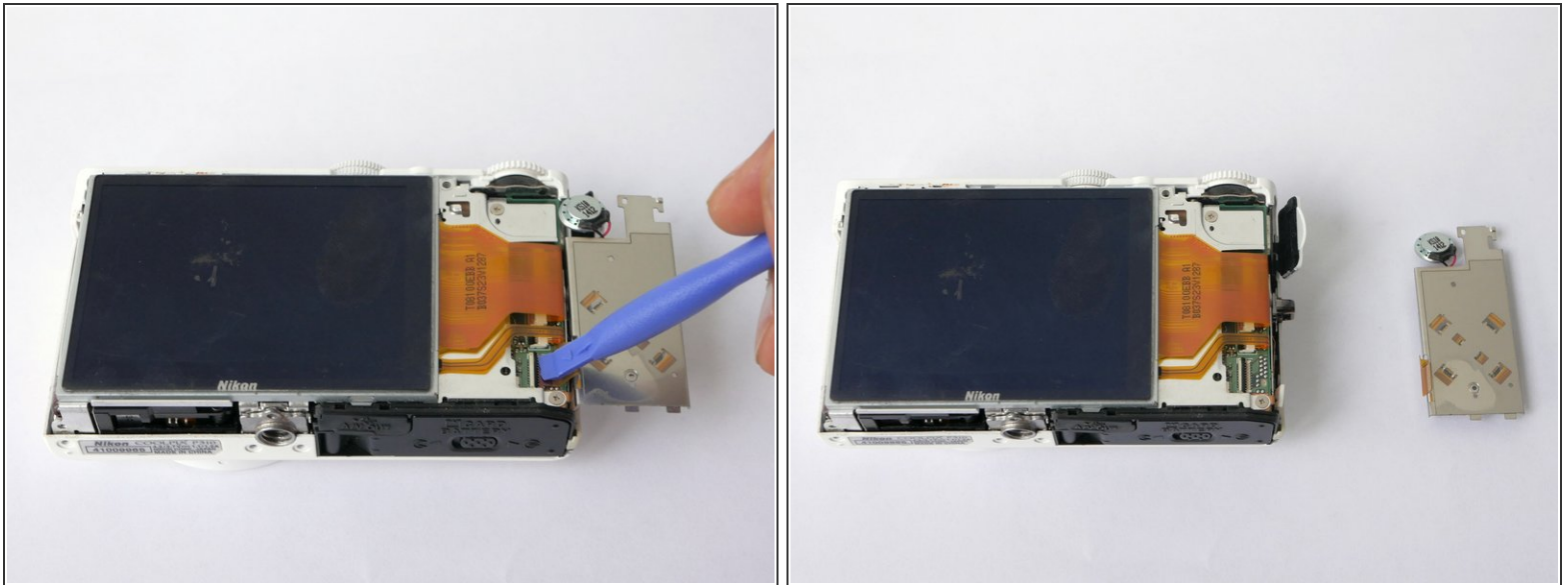
- Remove all screws from the bottom, sides and top of the camera. All screws don't have the same size, be careful when replacing them.
- Pull gently but firmly the back cover of the camera to remove it and reveal the inside.

## Step 2 — Removing the button block and screen



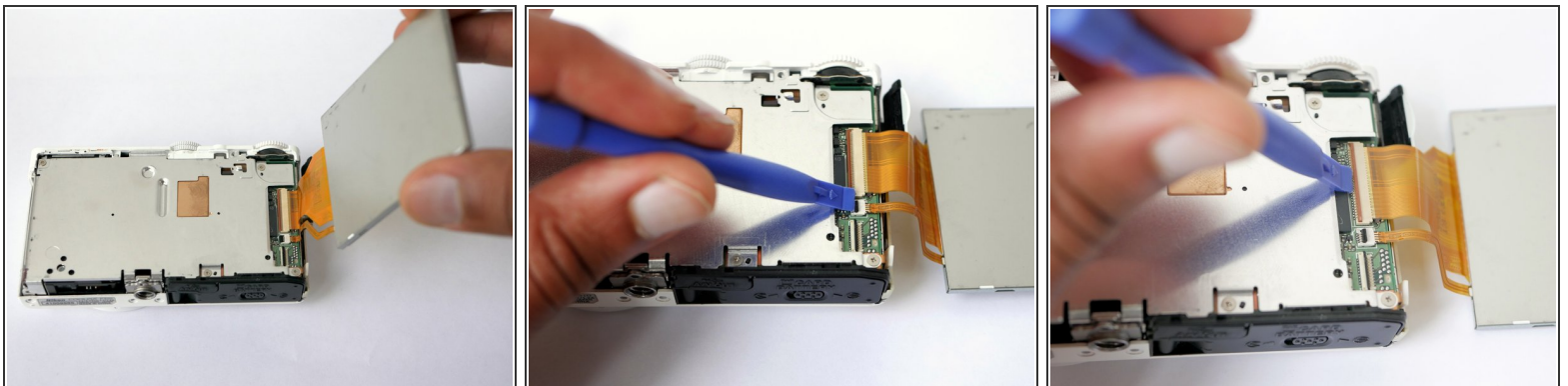
- Remove the plastic part with all buttons.
- Lift up the the buttons block from the left side, to access its ZIF connector.

### Step 3 — Removing the button block and screen



- With a plastic spudger, open the ZIF connector and release the button block. It opens from the right side - the black part is to be gently lifted up.

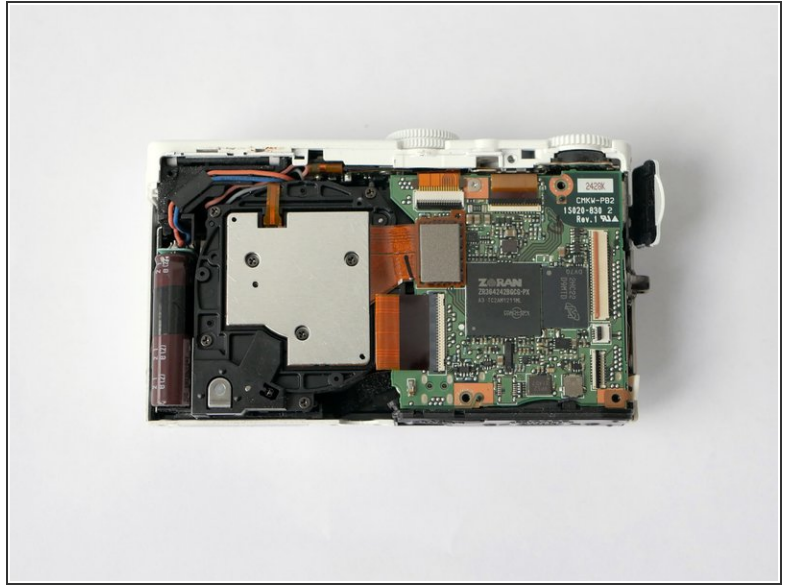
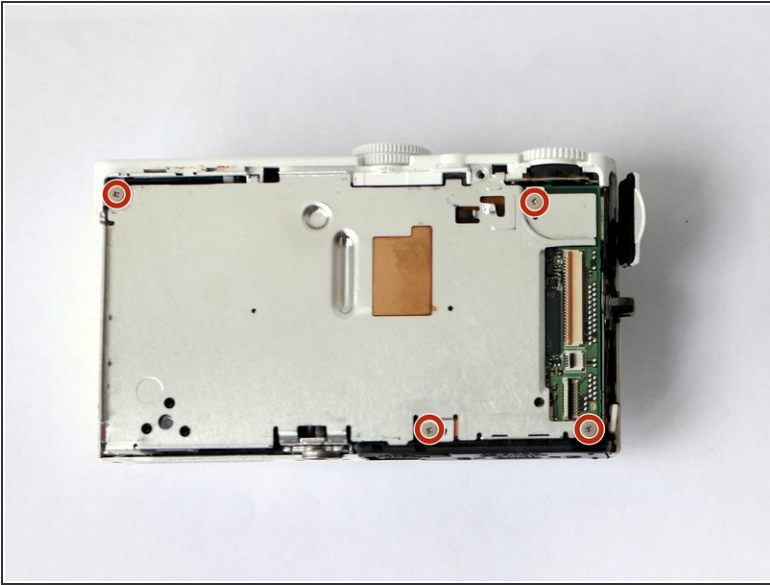
### Step 4 — Removing the Screen



- Lift up the screen from the left side, to access its two ZIF connectors.
- Open the small and the large ZIF connectors with a spudger.
- The small connector is opened by lifting the black part.
- The large connector is released thanks to the orange part. This longer connector needs to be opened carefully.

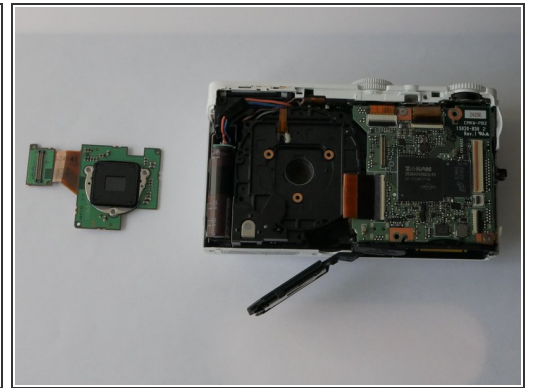
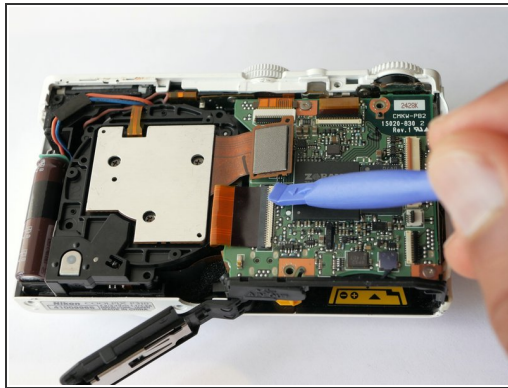
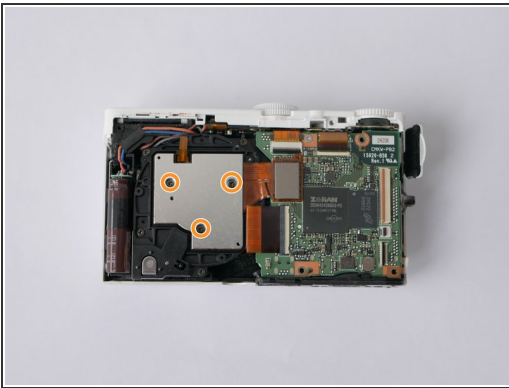


## Step 5 — Accessing the main PCB



- Remove the screws maintaining the last metal protection.

## Step 6 — Releasing the image sensor



- Remove the 3 screws to release the image sensor PCB.
- Release the ZIF connector lifting it up gently using a plastic spudger.
- You can then remove the image sensor and clean it. Avoid to scratch the sensor or the inner lens glass, as these would be unreparable damages.

To reassemble your device, follow these instructions in reverse order.