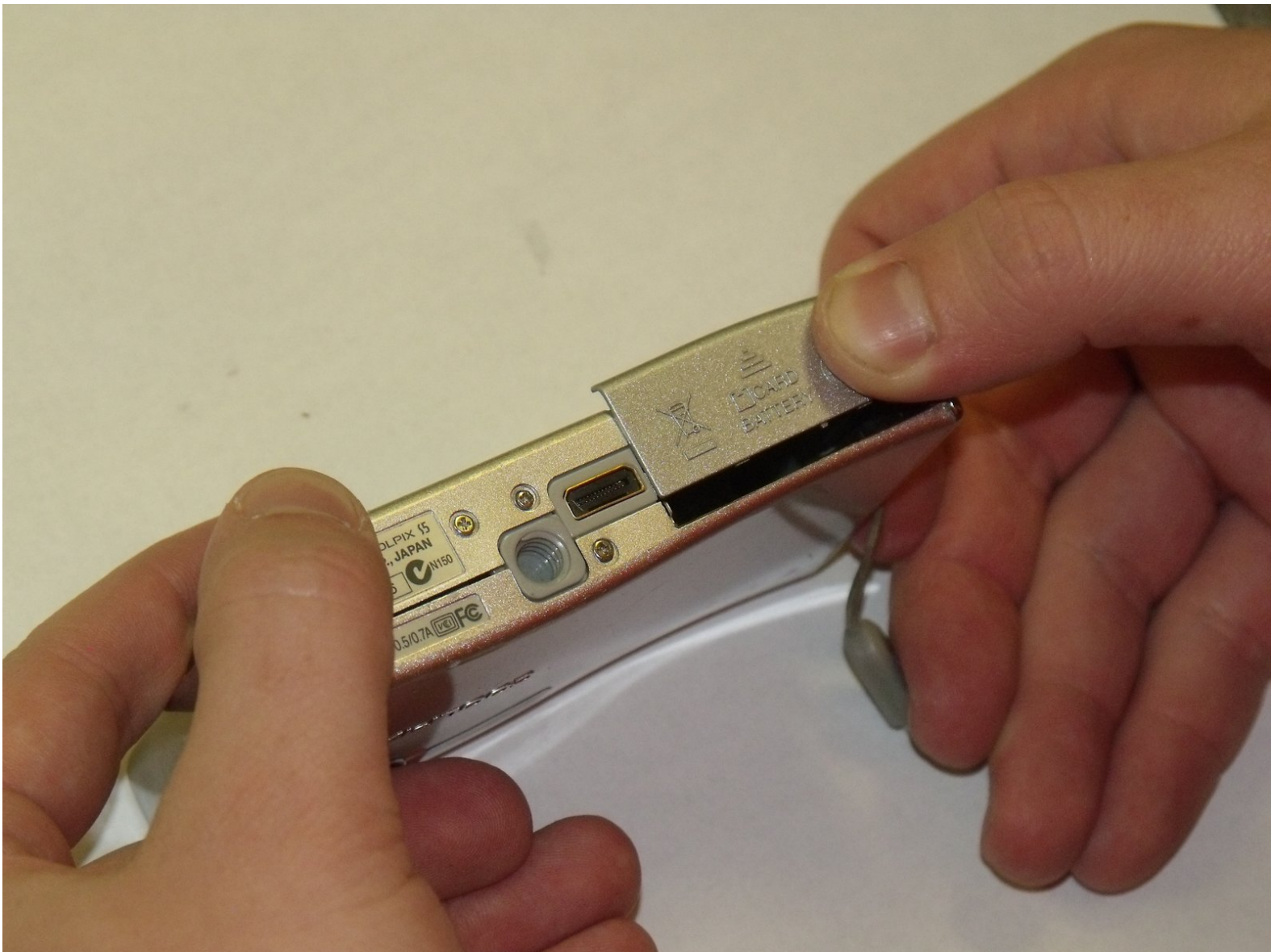




Nikon CoolPix S5 Battery Replacement

This guide demonstrates how to install a battery into the Nikon Coolpix S5.

Written By: Patty Richeson



INTRODUCTION

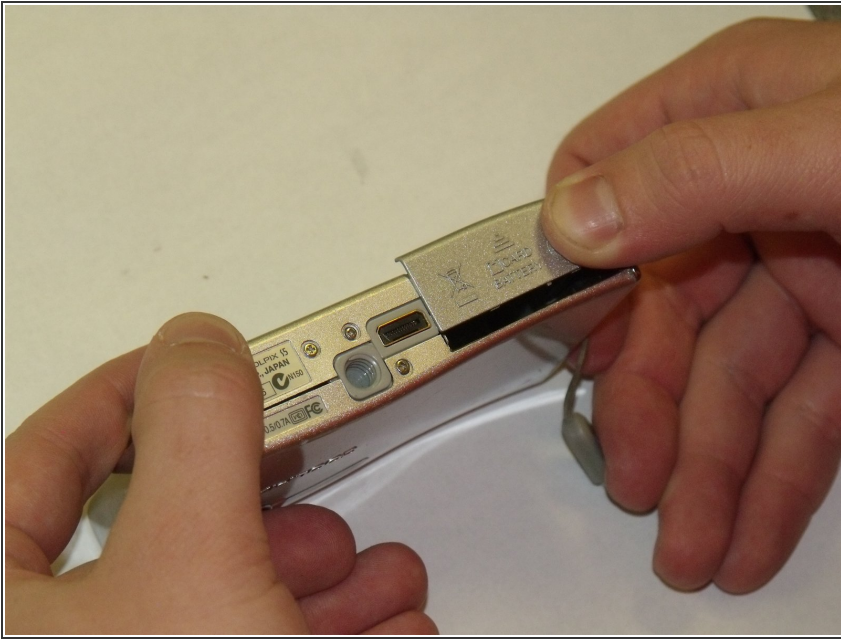
This guide is to be used to install the battery in the case that the battery dies or no longer functions properly. A Phillips screwdriver will be needed to complete this installation.



PARTS:

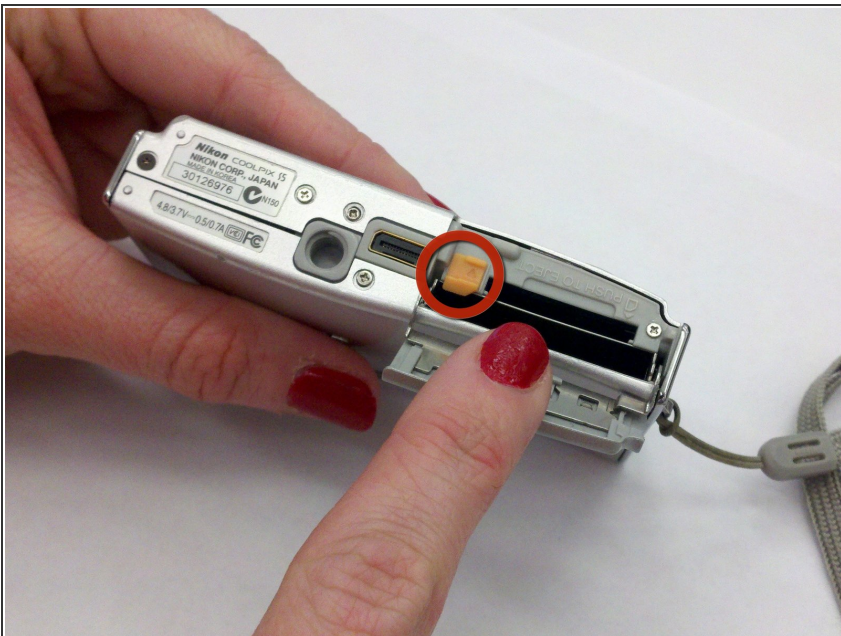
- [Nikon CoolPix S5 Battery](#) (1)
-

Step 1 — Battery



- Using the thumb, firmly push the SD/Battery cover in the middle and then in the direction of the arrow on the SD/Battery cover.
- This will cause the SD/Battery cover to pop open.

Step 2



- Press orange clip to eject battery (battery not shown).

Step 3



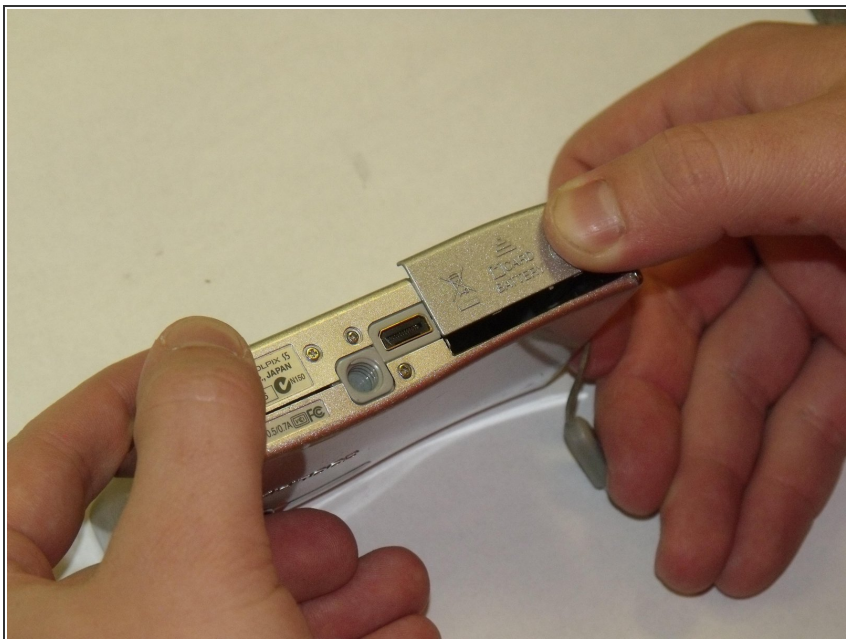
- While cupping hand under the bottom of the SD/Battery slot, turn the camera upright.
- This will cause the battery to fall into the hand (battery not shown).

Step 4



- Following the positive and negative placement signs, slide the new battery into the battery slot (battery not shown).

Step 5



- Slide the SD/Battery cover in the reverse direction of the arrow on the SD/Battery cover until it clicks into place.

To reassemble your device, follow these instructions in reverse order.