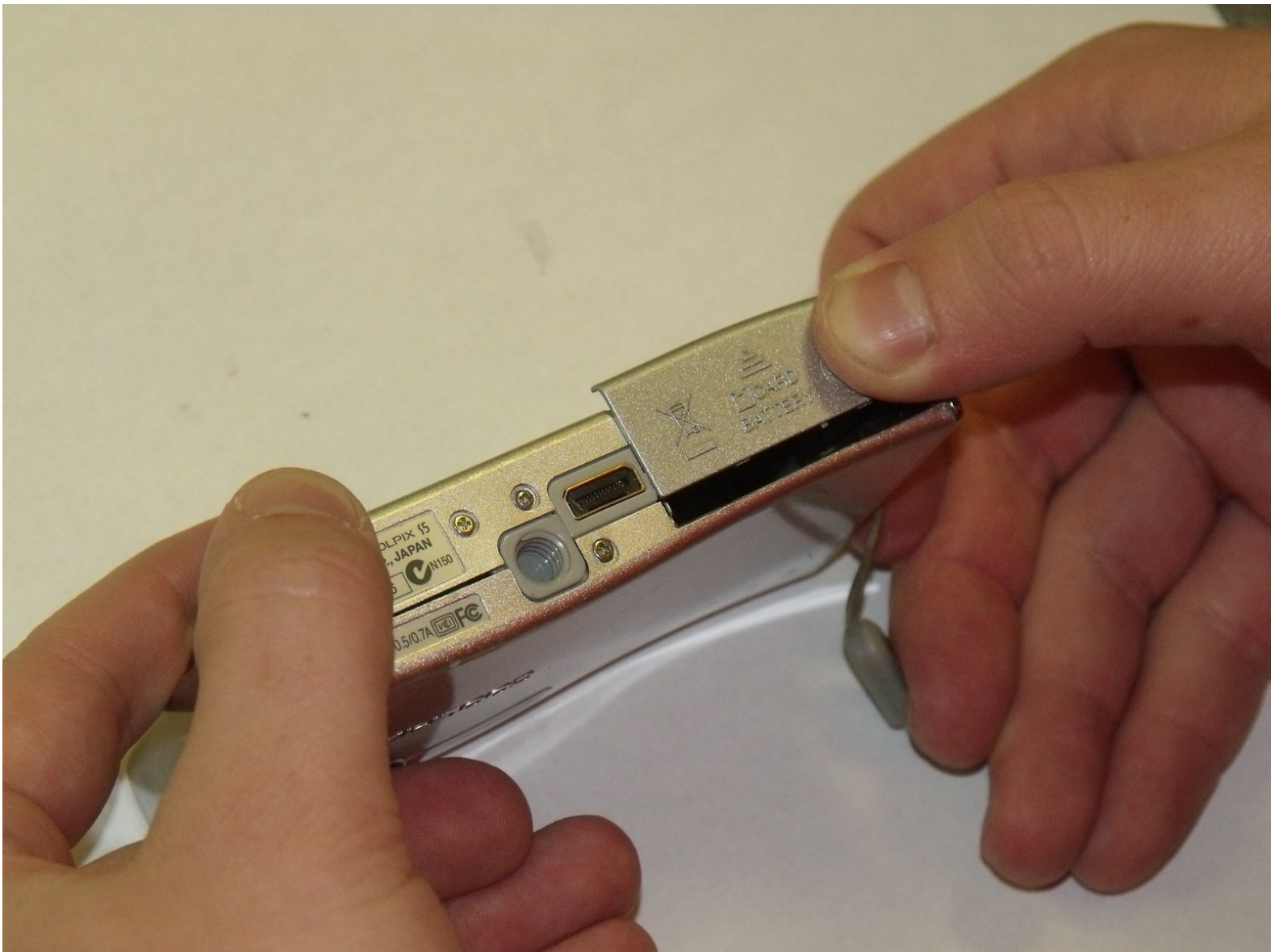




# Nikon CoolPix S5 SD Card Replacement

This guide demonstrates how to install a SD card into the Nikon CoolPix S5 camera.

Written By: Josh Miller



---

## INTRODUCTION

This guide is to be used to install the SD card in the case that the SD card is damaged or no longer functions properly due to overuse. A Phillips screwdriver will be needed to complete this installation.

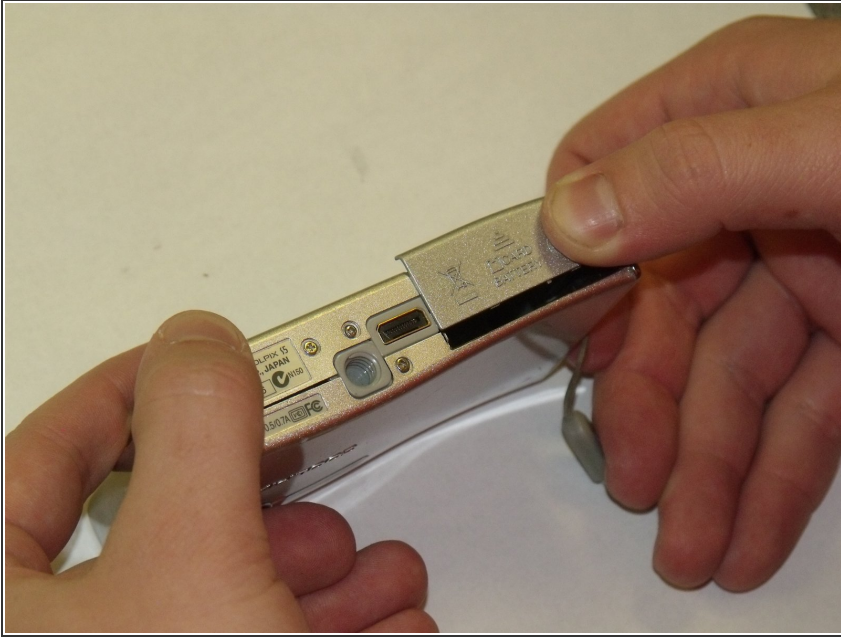
---



### PARTS:

- [SD Card](#) (1)
-

## Step 1 — SD Card



- Using the thumb, firmly push the Battery/SD cover in the middle and in the direction of the arrow on the Battery/SD cover.
- This will cause the Battery/SD cover to pop open.

## Step 2



- Press down on the SD card. This will cause it to eject, thus enabling it to be removed.

To reassemble your device, follow these instructions in reverse order.