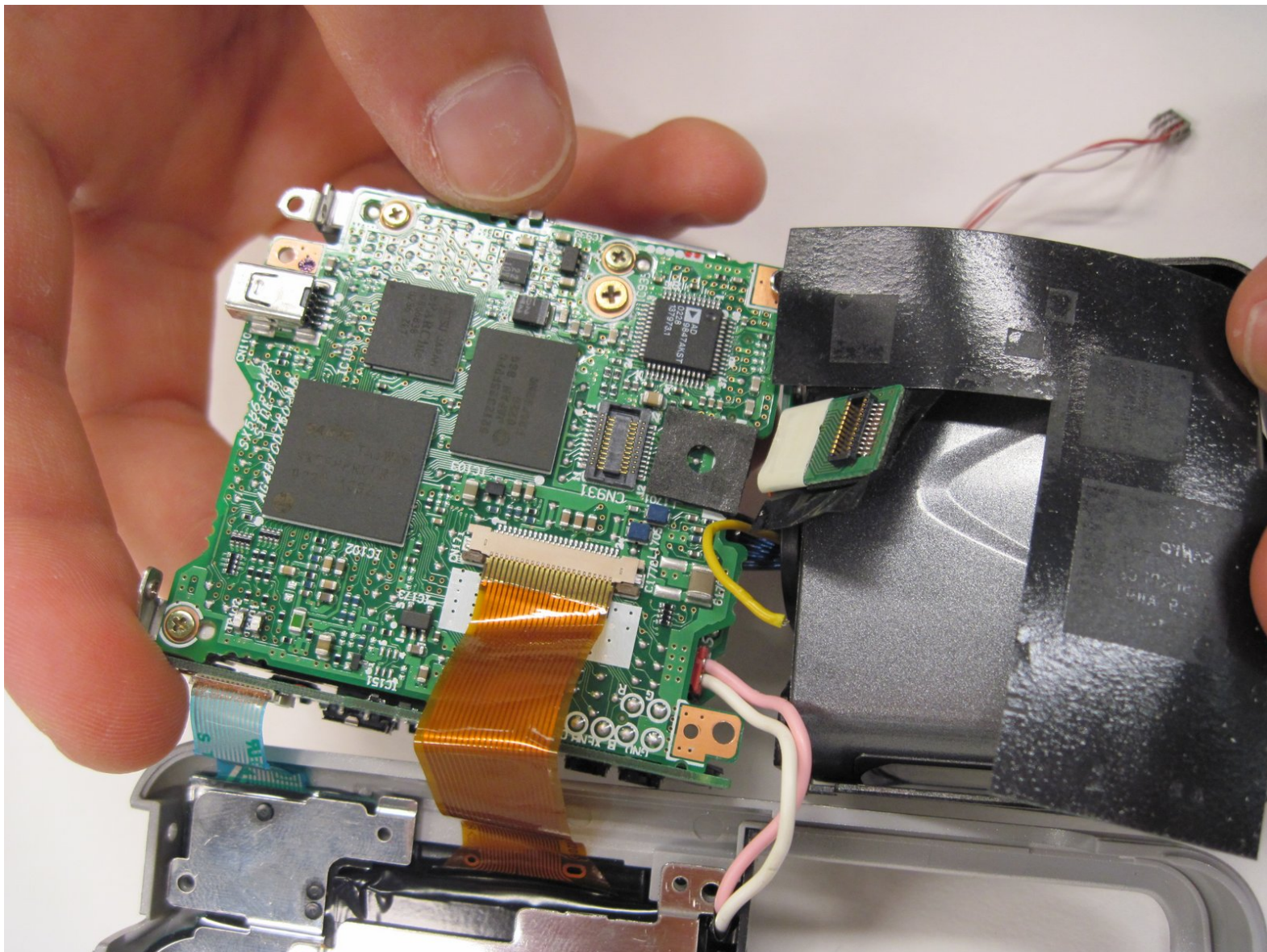




Nikon Coolpix 3500 Logic Board Replacement

Written By: richard guenther



INTRODUCTION

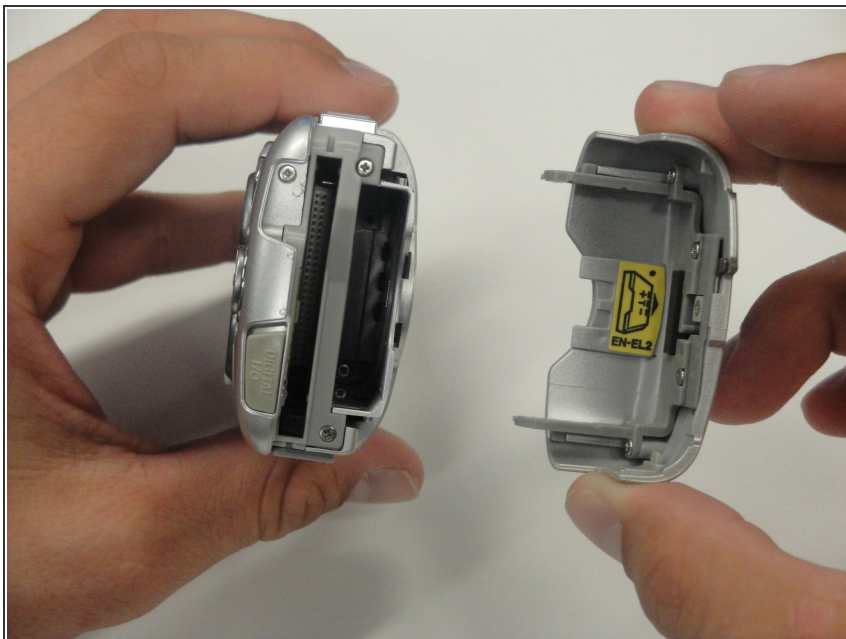
Replacing the logic board of a Nikon Coolpix 3500



TOOLS:

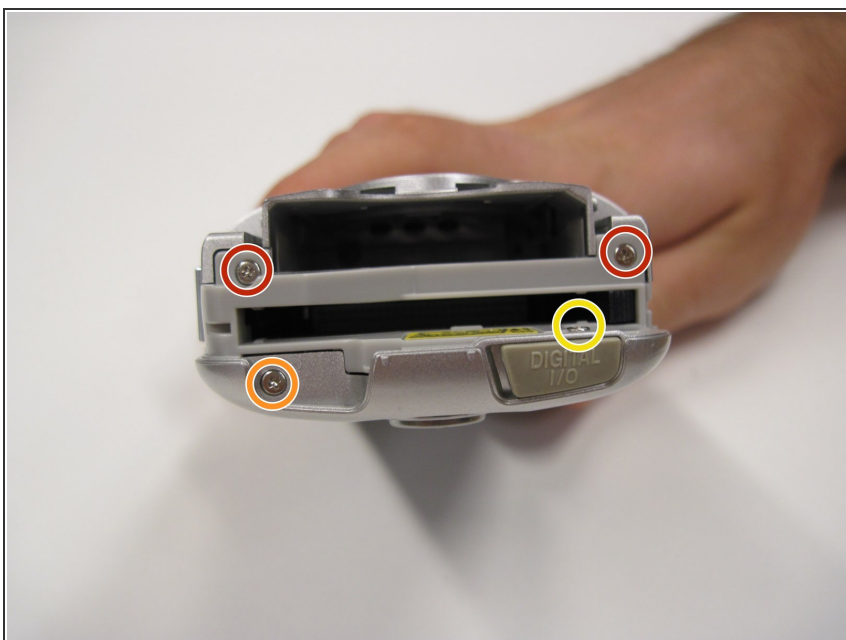
- [Phillips #00 Screwdriver](#) (1)
 - [Spudger](#) (1)
-

Step 1 — Battery



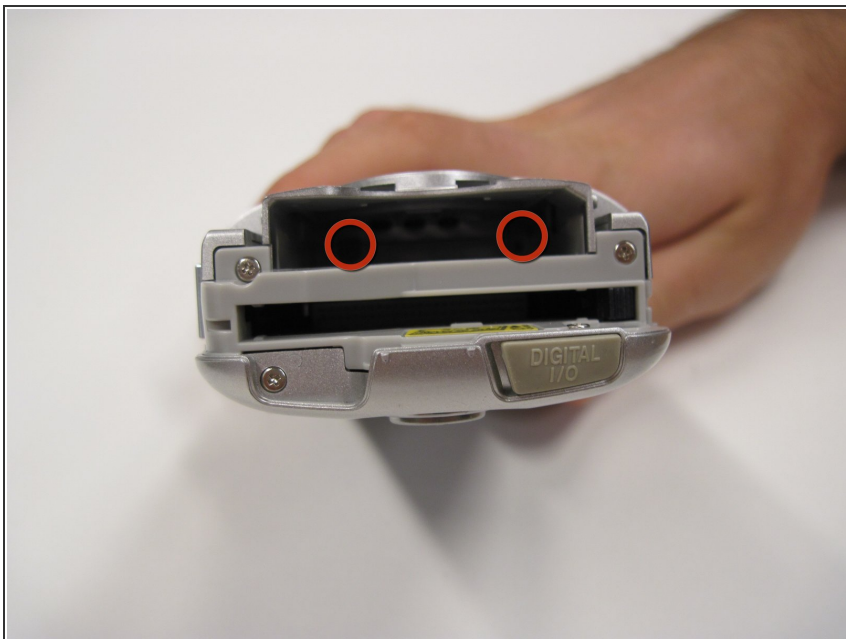
- Unlatch the battery cover. Slide the cover out and flip it open.
- Remove the battery.
- Gently remove the battery cover.

Step 2 — Front Cover



- Remove the two 4.5 mm screws that sit next to the battery slot.
- Remove the 3 mm screw that sits below the CF card slot.
- Remove the 4.5 mm screw that sits above the digital I/O cover.

Step 3



- Remove the two 4.5 mm screws that sit inside the battery slot.

Step 4



- Remove the two 5 mm screws that sit near the camera strap eyelet.
- Remove the camera strap eyelet.

Step 5



- Remove the 5 mm screw and cap that were underneath the camera strap eyelet.

Step 6



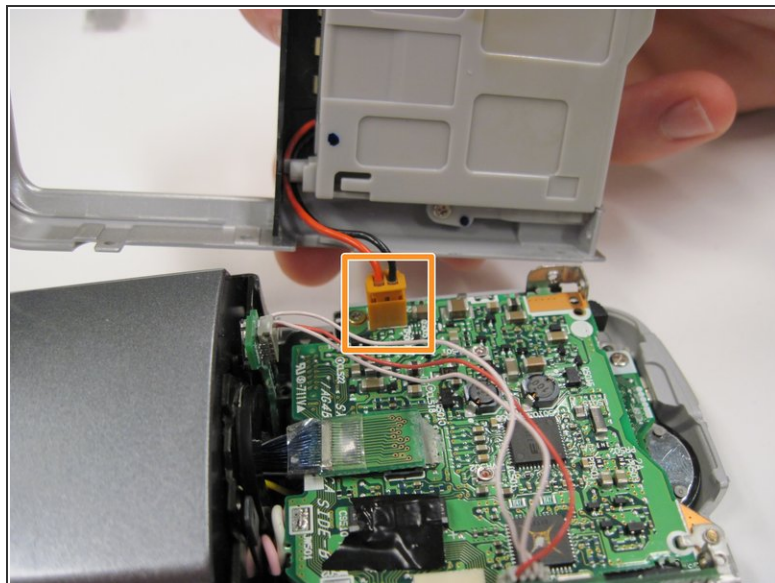
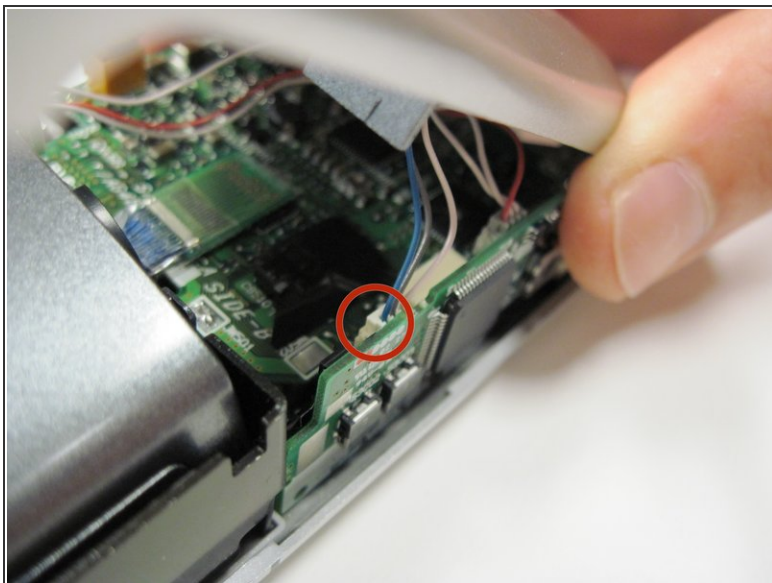
- Remove the five 3.5 mm screws that sit at the bottom of the camera.
- Remove the grey plastic piece, which the five screws held in place, by gently detaching the front cover.



Do not apply too much force; two wires still connect the front cover to the motherboard.

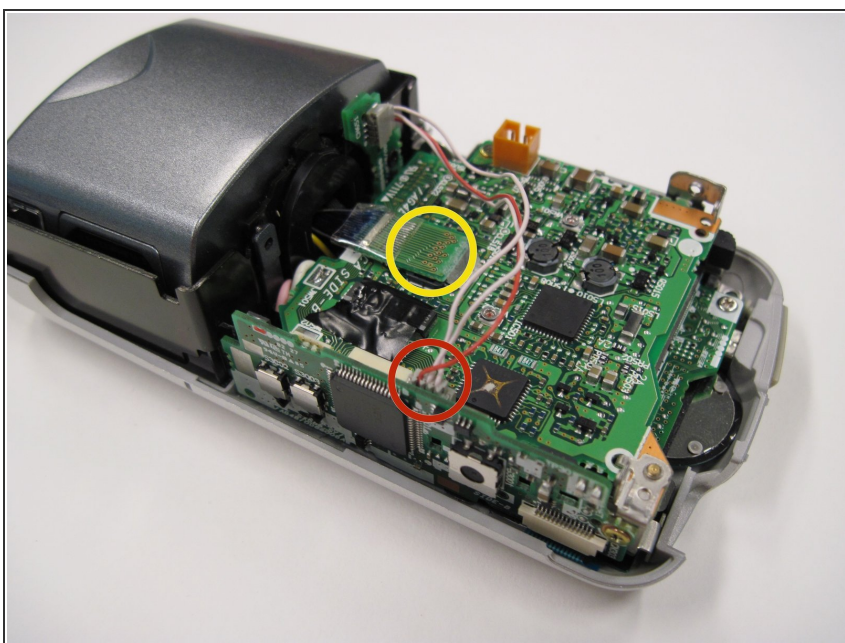
This document was generated on 2020-02-27 11:30:56 PM (MST).

Step 7



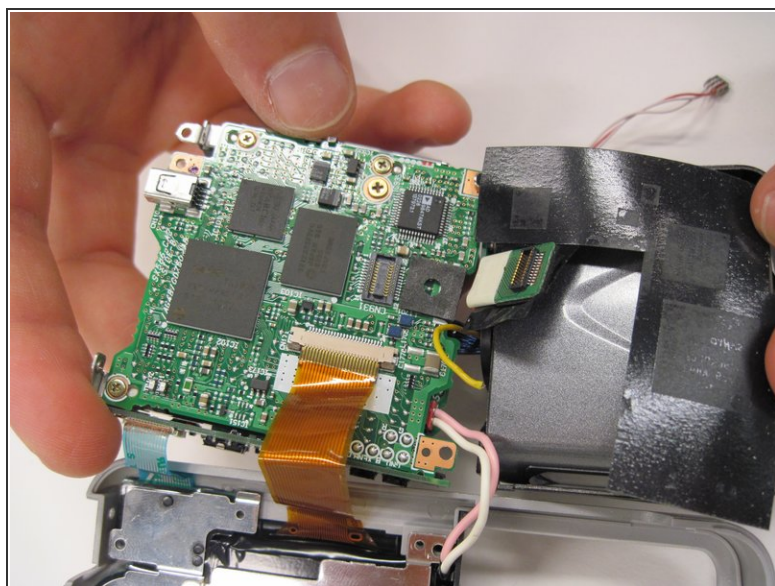
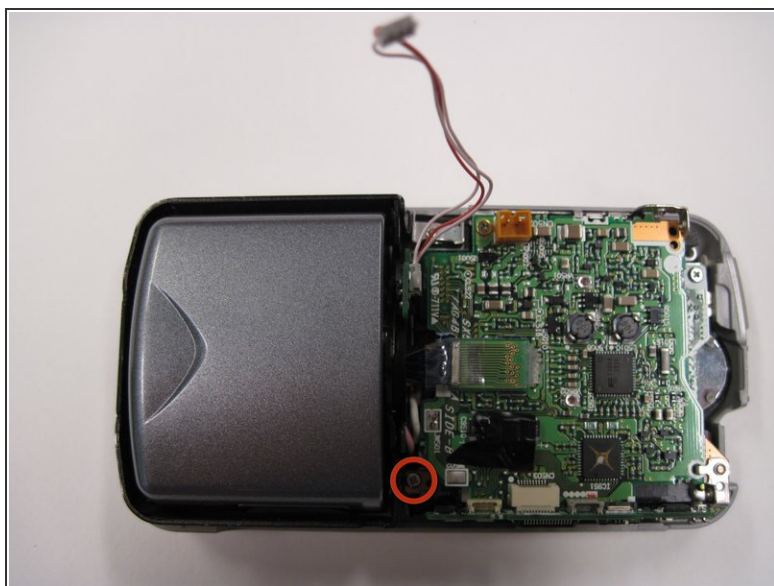
- Using a spudger, detach the white-capped wire.
- Using a spudger, detach the orange-capped wire and set the front cover aside.

Step 8 — Logic Board



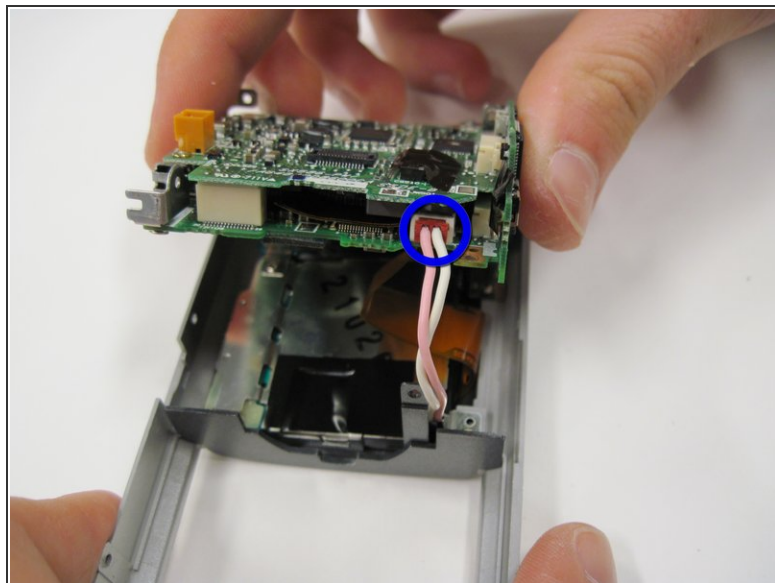
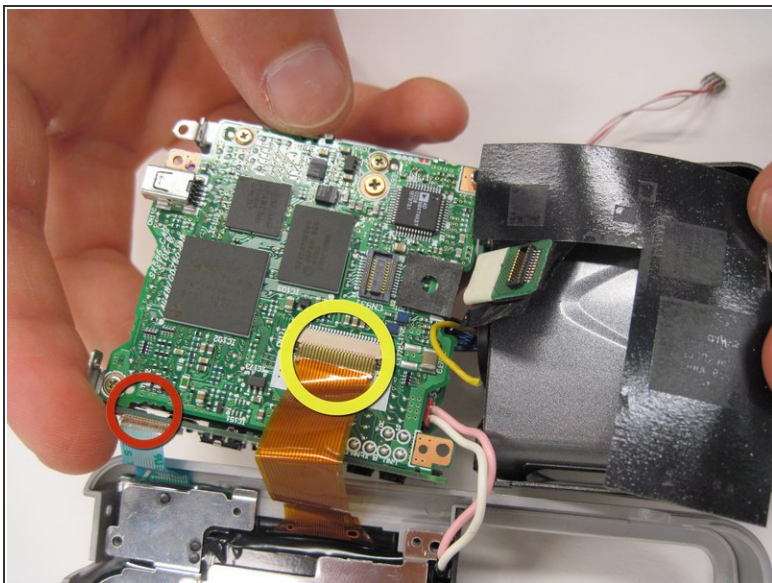
- Detach the grey-capped wire.
- Detach the green chip that sits next to the blue wires.

Step 9



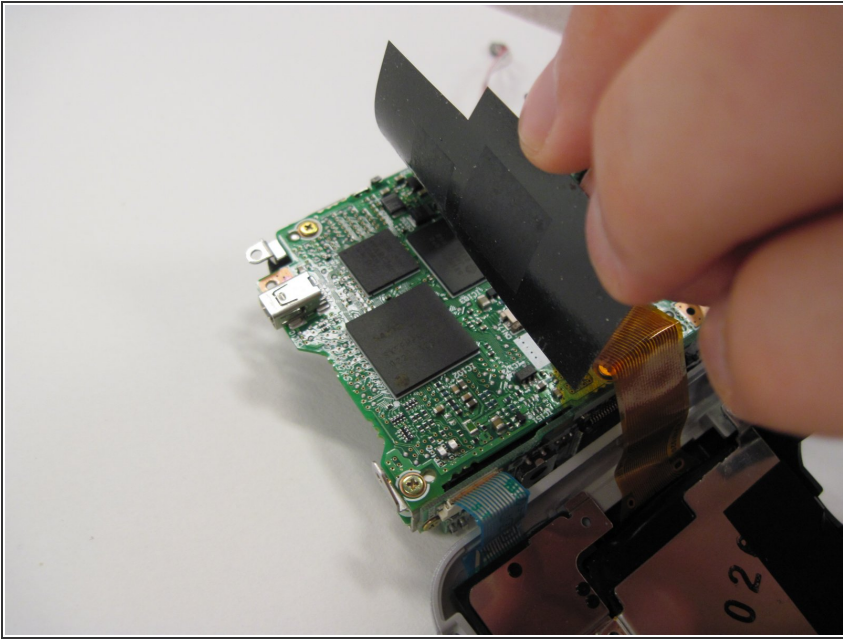
- Remove the 3.5 mm screw that sits next to the rotating lens.
- Invert the logic board and lens to uncover the orange and blue ribbon cables. These cables still connect the logic board to the LCD screen.

Step 10



- Detach the blue ribbon cable.
- Detach the orange ribbon cable by using a spudger, and while pushing it out horizontally.
- Detach the red-capped wire.
- Lift the logic board and lens, which are still connected, out of the back cover.

Step 11



- Lift the black covering and remove the orange ribbon cable, which connects the lens to the logic board.

To reassemble your device, follow these instructions in reverse order.