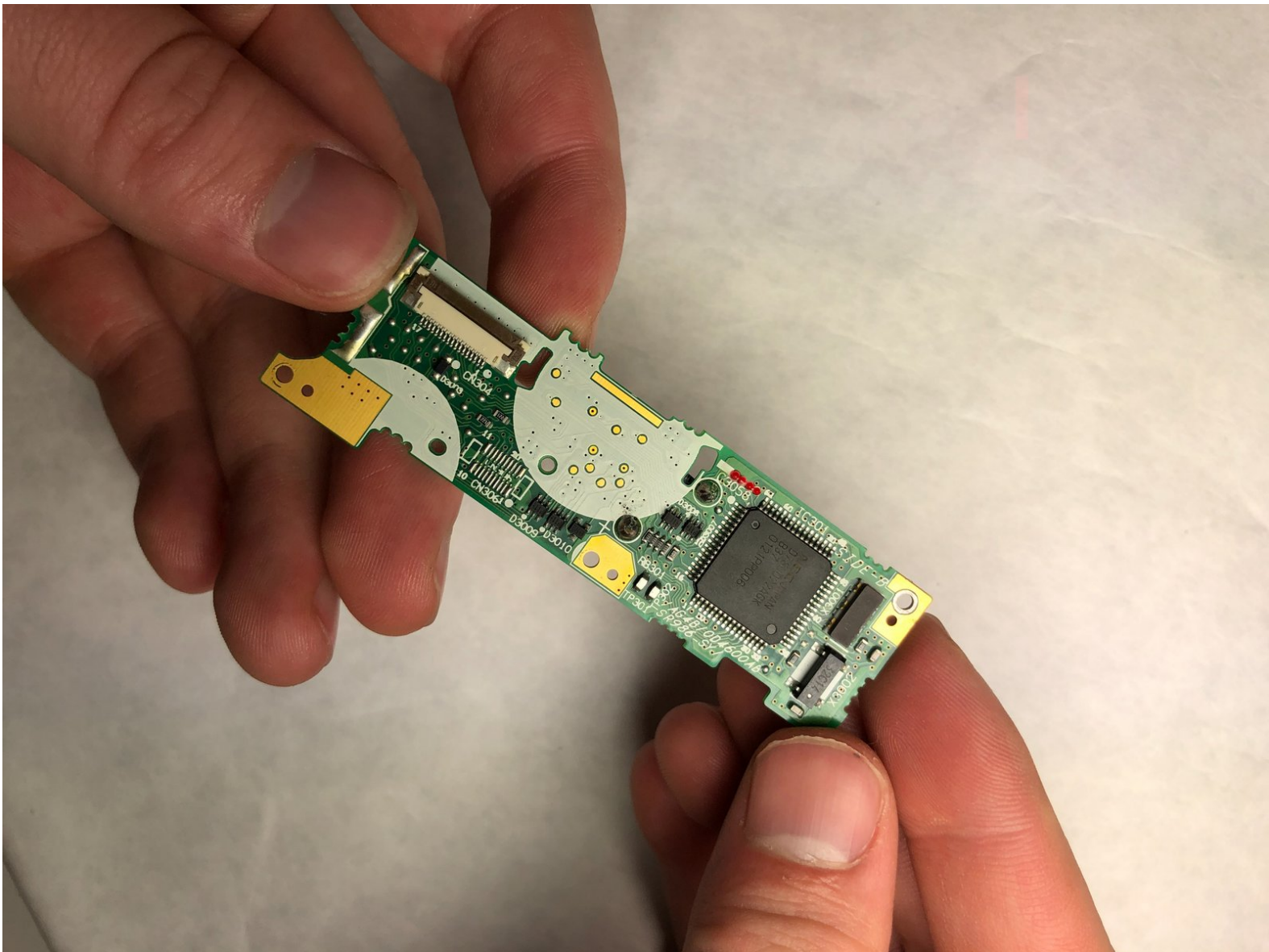




Nikon Coolpix 775 Motherboard Replacement

Follow this guide to replace the motherboard of the Nikon Coolpix 775.

Written By: Suketu Patel



INTRODUCTION

Do you think your motherboard is fried? This guide can help you walk through the removal of this motherboard for the Nikon Coolpix 775.



TOOLS:

- [J00 JIS Screwdriver](#) (1)
 - [Phillips #00 Screwdriver](#) (1)
 - [Tweezers](#) (1)
-

Step 1 — Battery



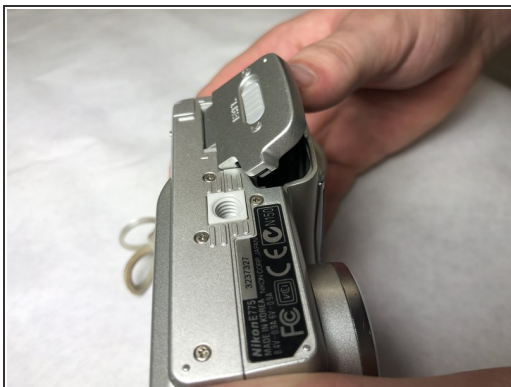
- Flip the camera, so the bottom is facing up.

Step 2



- Slide the gray latch to the open "pac-man" symbol.

Step 3



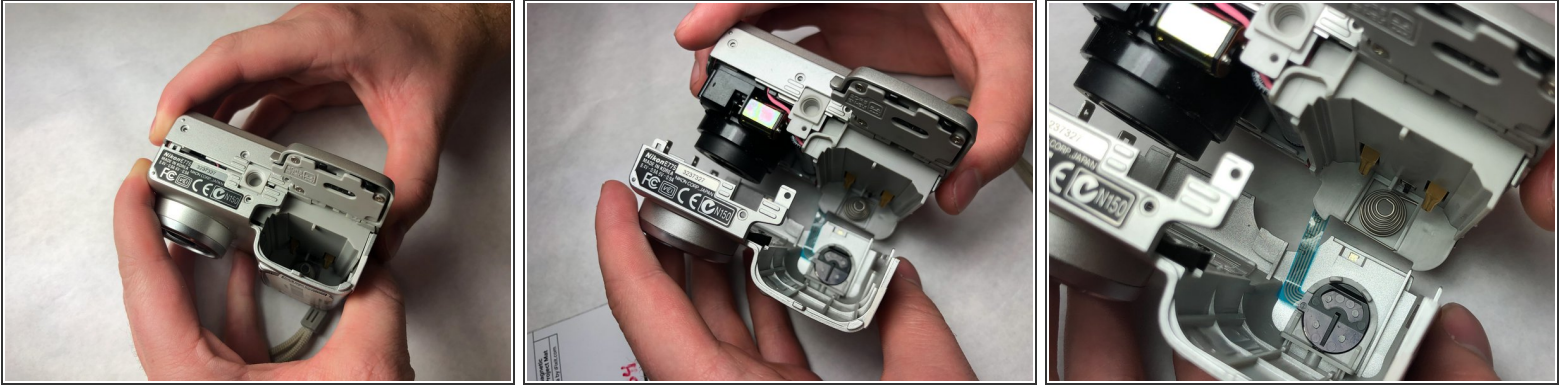
- Flip up the cover and remove the battery inside the slot.

Step 4 — Motherboard



- Unscrew the eight 4mm long JIS #00 screws from the bottom, right side, and the left side.

Step 5



- Grab the camera with both your hand from the front and the back.
- Pull the two parts apart.
- ⓘ You may have to pull at different angles to get the two parts to separate, but make sure you don't pull too hard because there is a wire connection on the inside.

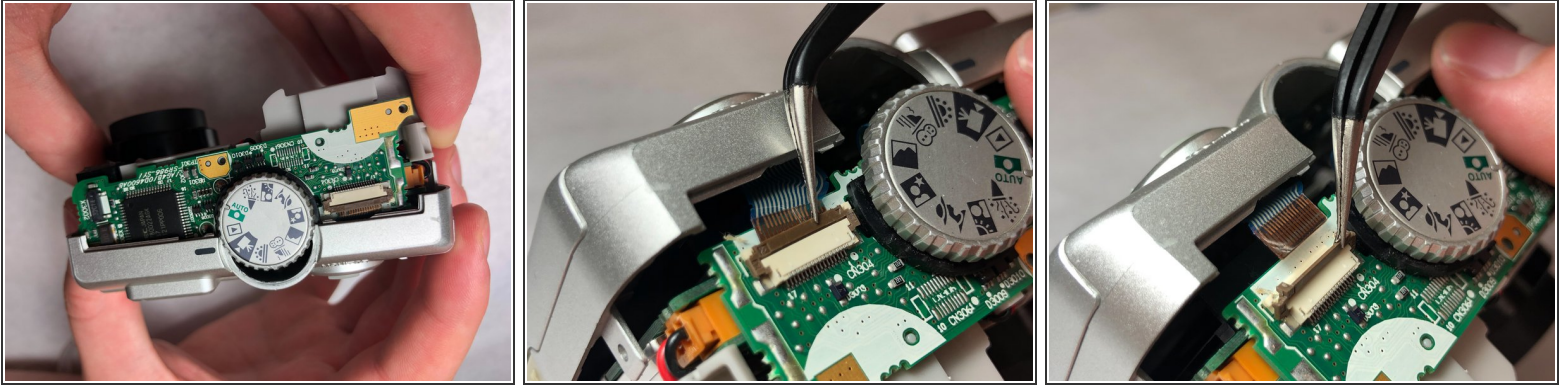
Step 6



- Flip the camera back so you can see the top.
- Pull the ribbon cable out of the socket connecting to the motherboard by using your hands or tweezers.

⚠ Be careful not to puncture or rip the ribbon cable.

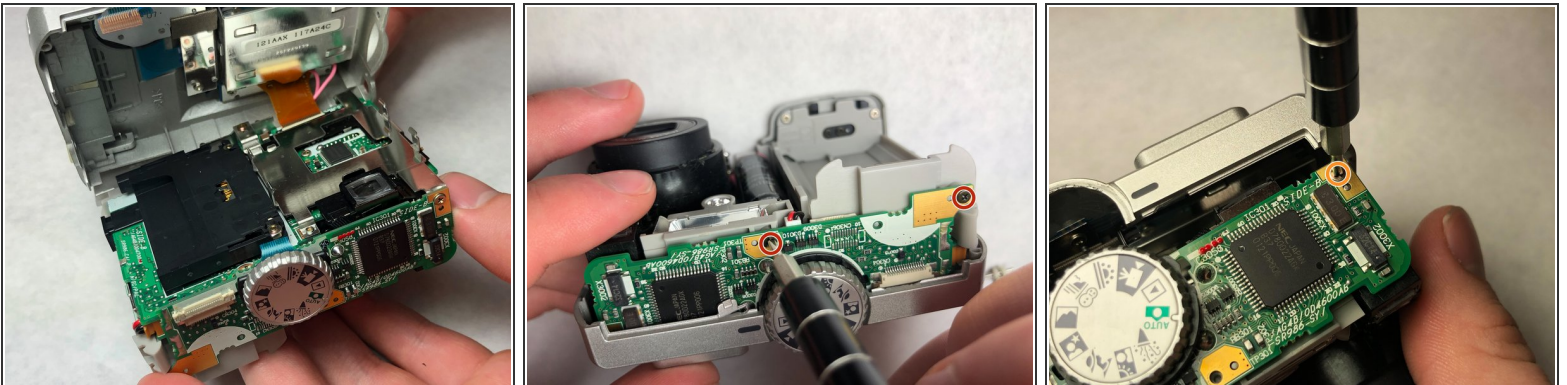
Step 7



- Look back to the top of the camera.
- Flip up the tab that is exposed right by the dial using tweezers.
- Release the ribbon to be able to separate the top part of the back of the camera.

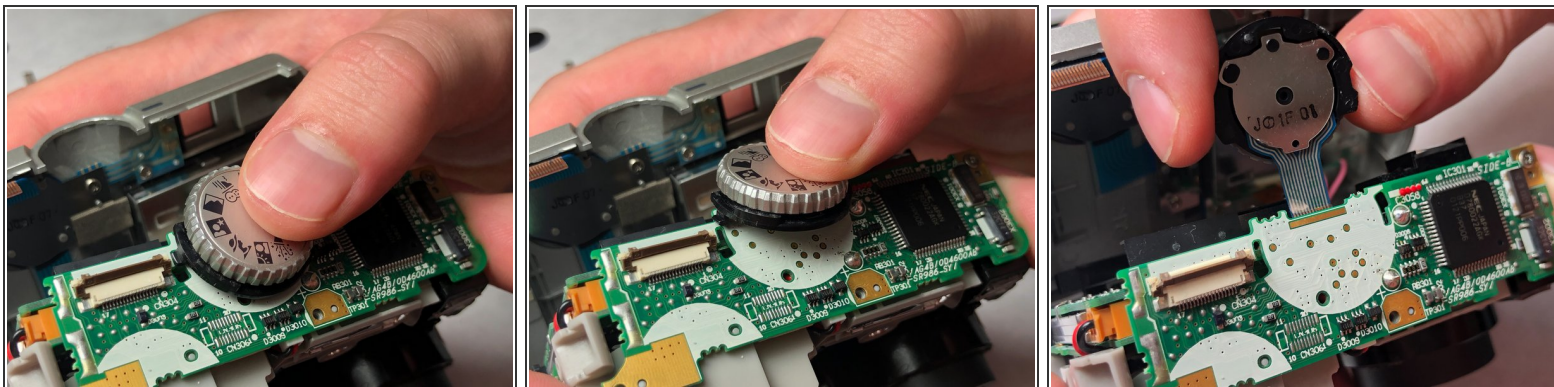
⚠ Be careful not to rip the ribbon cable.

Step 8



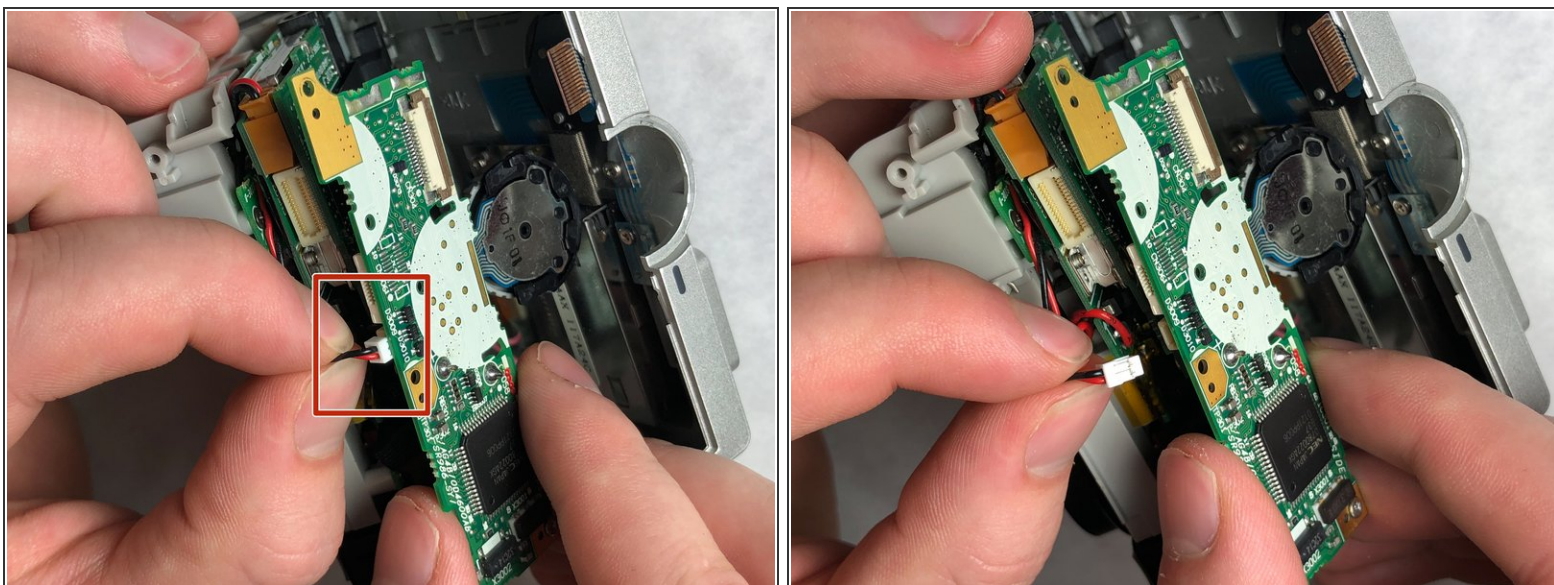
- Look at the top side of the camera.
- Unscrew the two 4mm Phillips #00 screws.
- Unscrew the 2mm JIS #00 screw as well.

Step 9



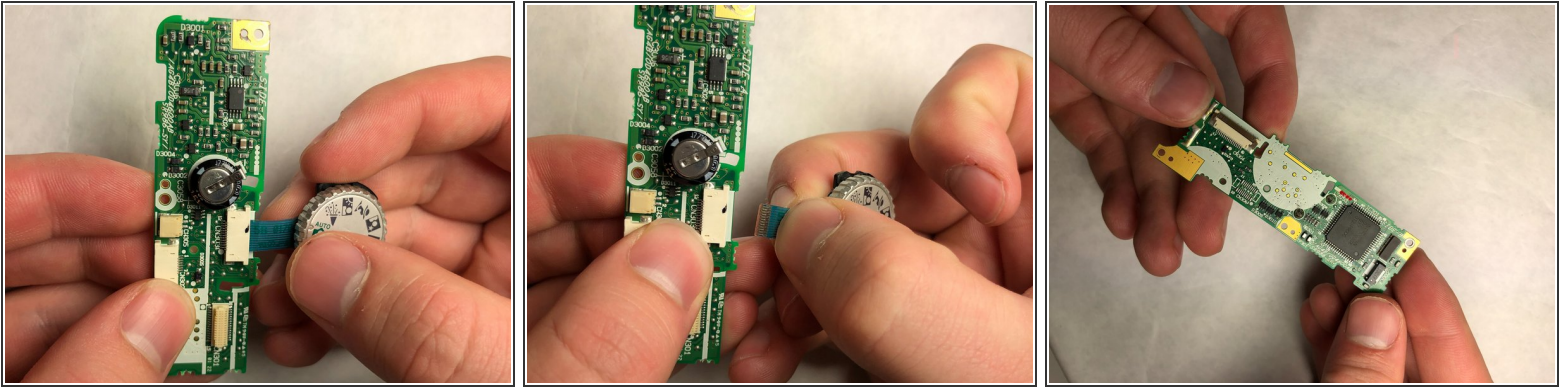
- Push or slide the the top dial toward the backside of the camera to unclip from the motherboard.

Step 10



- Pull the red and black wire out of the socket on the motherboard.
- Pull motherboard up out of camera.

Step 11



- Pull the ribbon connected to the dial off the motherboard.

⚠ Be careful not to rip the ribbon cable.

To reassemble your device, follow these instructions in reverse order.