



Nikon Coolpix A900 Rear Case Replacement

This guide will show you how to remove and replace the rear case of the Nikon Coolpix A900.

Written By: Andres Aronstam



INTRODUCTION

This guide will show you how to remove and replace the rear case of the Nikon Coolpix A900.

You may want to replace the rear case of the camera if it gets dropped, or develops a crack.

In most cases, you will need to remove the rear case to access other components that need to be replaced.

Before you get started, make sure that you have several containers for small parts so you can stay organized.



TOOLS:

- [Phillips #00 Screwdriver](#) (1)
 - [iFixit Opening Tools](#) (1)
-

Step 1 — Battery



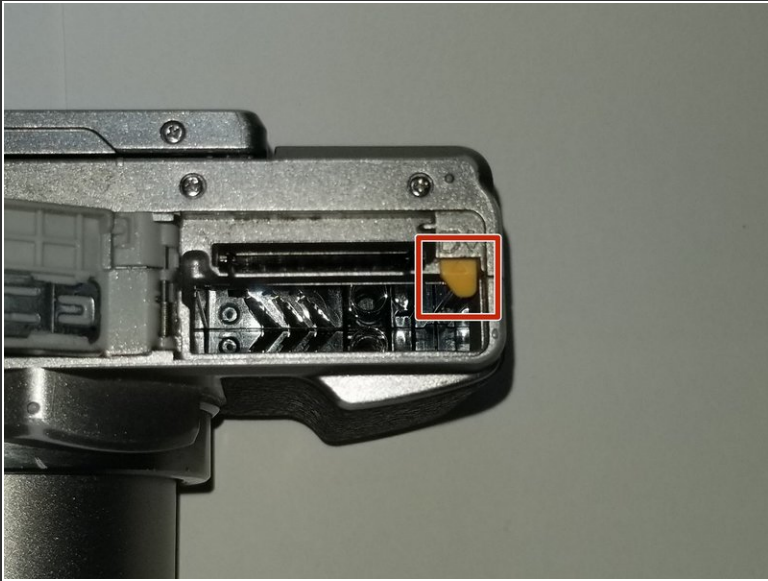
- Orient the camera so that it is upside down, with the lens facing towards you.

Step 2



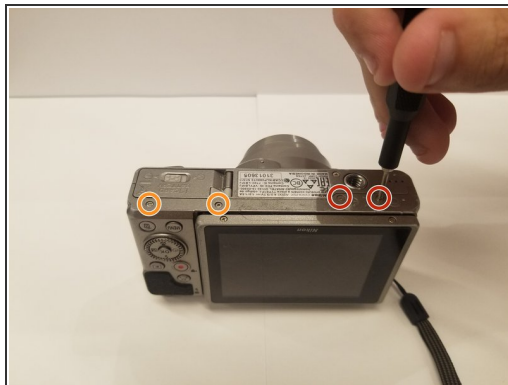
- Slide the battery door lock left to unlock it.
- The battery door will automatically open.

Step 3



- Slide the yellow tab up to release the battery.
- ☞ To re-insert a battery, slide the battery back in until the yellow tab locks it in place.
- ⓘ There is a diagram on the opposite side of the battery compartment to help you orient the battery correctly.

Step 4 — Rear Case



- Orient the camera upside down, with the lens facing away from you.
- Remove the two 3mm Phillips #00 screws from the right.
- Remove the two 3.4mm Phillips #00 screws from the left.

Step 5



- Turn the camera on its side, with the lens facing away from you.
- Remove the 3.4mm Phillips #00 screw. Repeat this for the opposite side of the camera.

Step 6



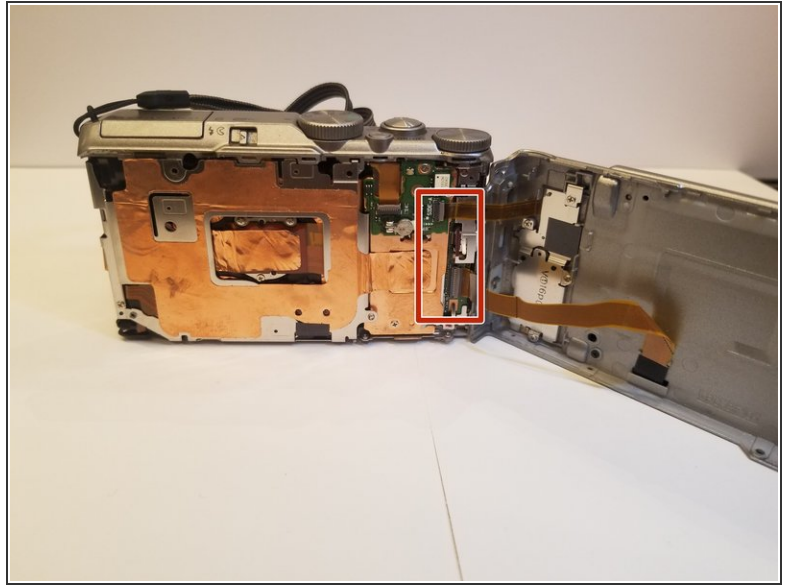
- Place the camera upright with the lens facing away from you.
- Move the monitor down, and remove two 4.4 mm screws.

Step 7



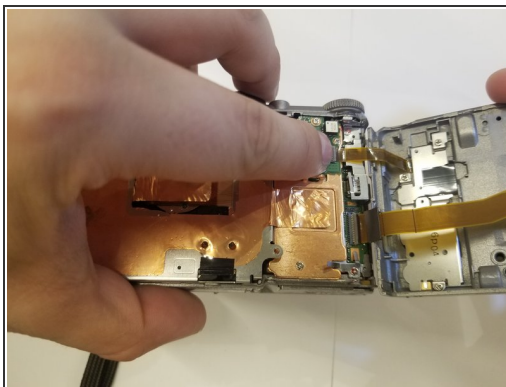
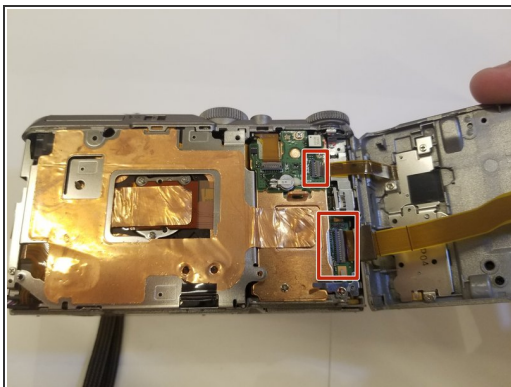
- Remove the two black 2.5 mm screws from the monitor bracket.

Step 8



- Return the monitor to the closed position.
- Gently open the rear case.
- ⓘ You may need opening tools to help separate the rear case.
- ⚠ Be careful when opening the rear case to not damage the ribbon connectors.

Step 9



- Place the camera lens down, while supporting the rear case.
- Unlock the two ribbons by using your finger to lift the plastic hinge on the ribbon connector.
- With the ribbons disconnected, you can now remove the rear case.

To reassemble your device, follow these instructions in reverse order.