



# Nikon Coolpix AW130 Battery Door Replacement

Removing the battery door of the Nikon Coolpix AW130.

Written By: Lauren Stepp



## INTRODUCTION

Safely replacing the battery door is a necessary step in protecting the internal components of the camera. Thoroughly completing this process also protects the waterproof integrity of the piece.



### TOOLS:

- [Phillips #00 Screwdriver](#) (1)
- [Metal Spudger](#) (1)

## Step 1 — Battery



- Using your thumb and pointer finger, open the card/battery hatch by pressing the center button of the wheel and turning the entire wheel to the left.

☑ When reassembling, you must turn this wheel to the right until it clicks.

## Step 2



- You should feel the door begin to loosen. Carefully pull the hatch open.



### Step 3



- Push the yellow battery/charger compartment tab up using your thumb nail.

### Step 4



- After pressing the yellow tab, the battery should loosen.
- Slowly pull the battery completely out.

## Step 5 — Battery Door



- Using a Phillips #00 screwdriver, remove the 2, 4mm screws on the underside of the camera.

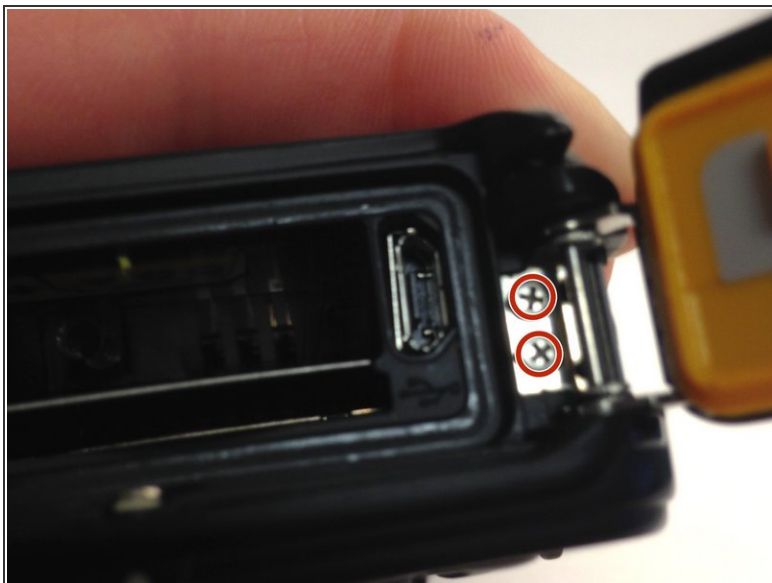
## Step 6



- Using the metal spudger, carefully pry on the plastic plate.
- The plastic plate should begin to loosen. Completely remove it from the camera body.



## Step 7



- Open the battery door. Near the hinge, a pair of screws should now be exposed.
- Using a Phillips #00 screwdriver, remove the 2, 4mm screws.

## Step 8



- Pull the battery door away from the camera body.

To reassemble your device, follow these instructions in reverse order.