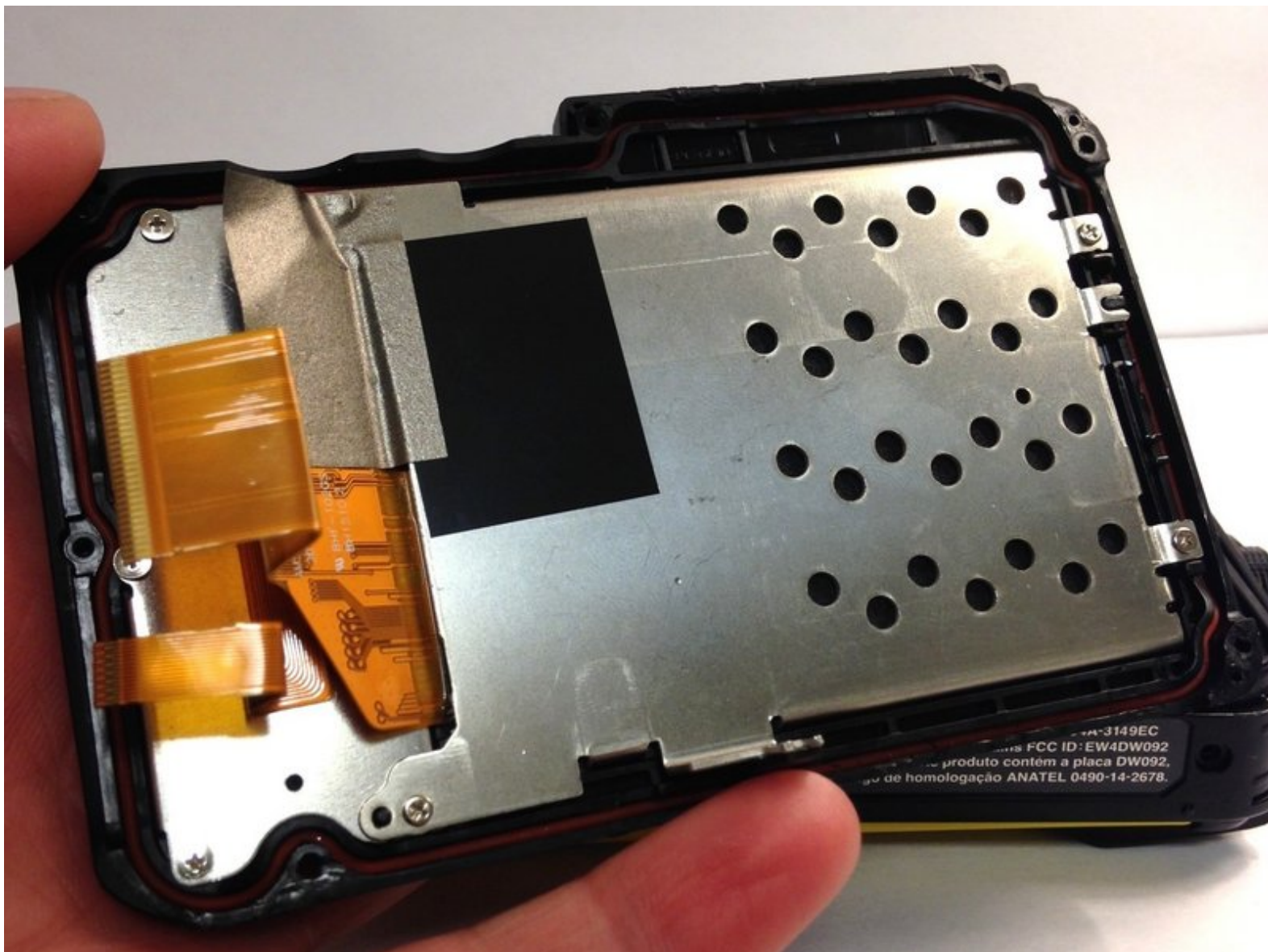




Nikon Coolpix AW130 LCD Screen Replacement

Replacing the LCD screen of the Nikon Coolpix AW130.

Written By: Lauren Stepp



INTRODUCTION

Without the LCD screen, you cannot preview your nifty vacation photos. If this screen is cracked, the waterproof qualities of the Nikon may be sacrificed. Allowing water to infiltrate into the body can cause for additional problems.



TOOLS:

- [Phillips #000 Screwdriver](#) (1)
 - [Tweezers](#) (1)
-

Step 1 — Battery



- Using your thumb and pointer finger, open the card/battery hatch by pressing the center button of the wheel and turning the entire wheel to the left.

☑ When reassembling, you must turn this wheel to the right until it clicks.

Step 2



- You should feel the door begin to loosen. Carefully pull the hatch open.

Step 3



- Push the yellow battery/charger compartment tab up using your thumb nail.

Step 4



- After pressing the yellow tab, the battery should loosen.
- Slowly pull the battery completely out.

Step 5 — Back Panel



- Using the T5 Torx screwdriver, remove all four 4mm screws.

Step 6



- Using a Phillips #000 screwdriver, remove the single 3mm screw found inside the battery/charging compartment.

Step 7



- Remove the upper cover (connected by glue) and unscrew the single Philips screw.

Step 8



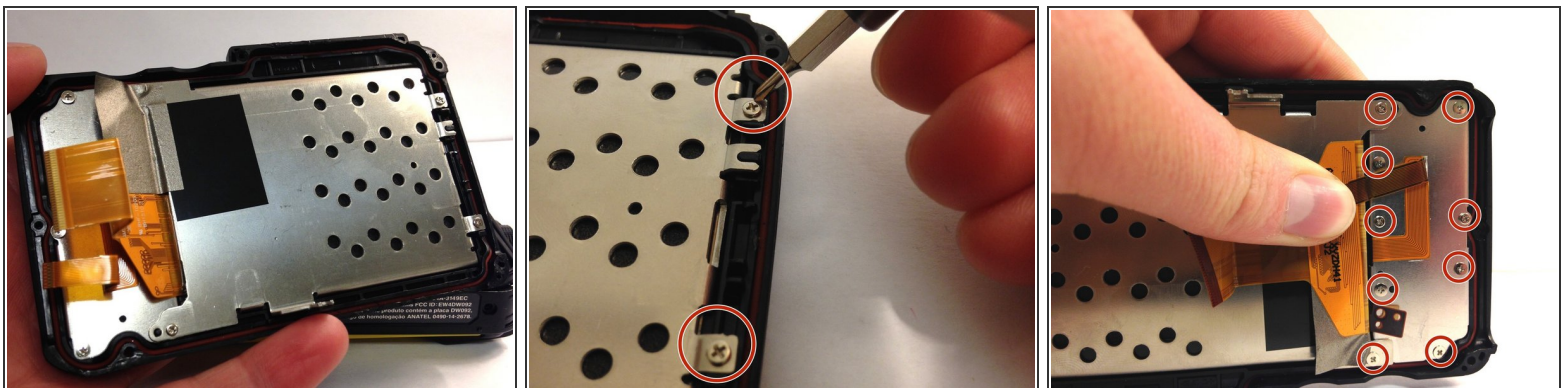
- Remove two Philips screws from the bottom cover, lift gently the cover and remove the single Philips screw under it.

Step 9



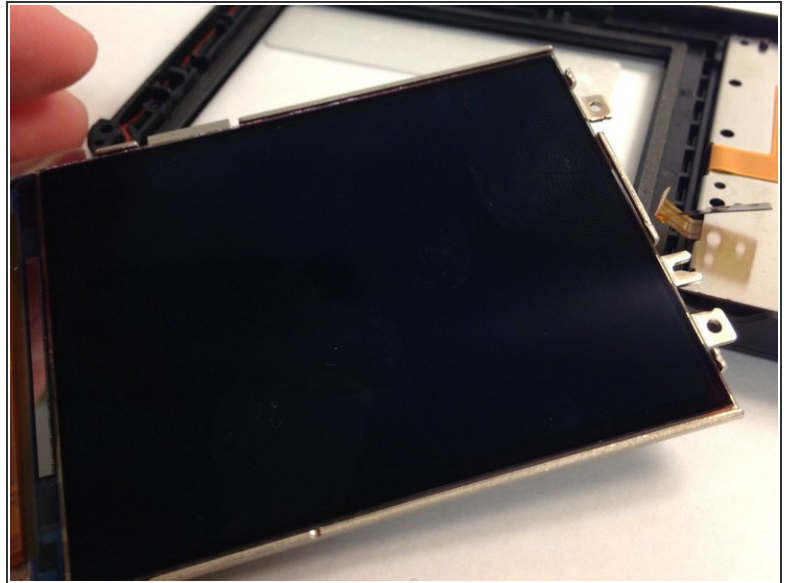
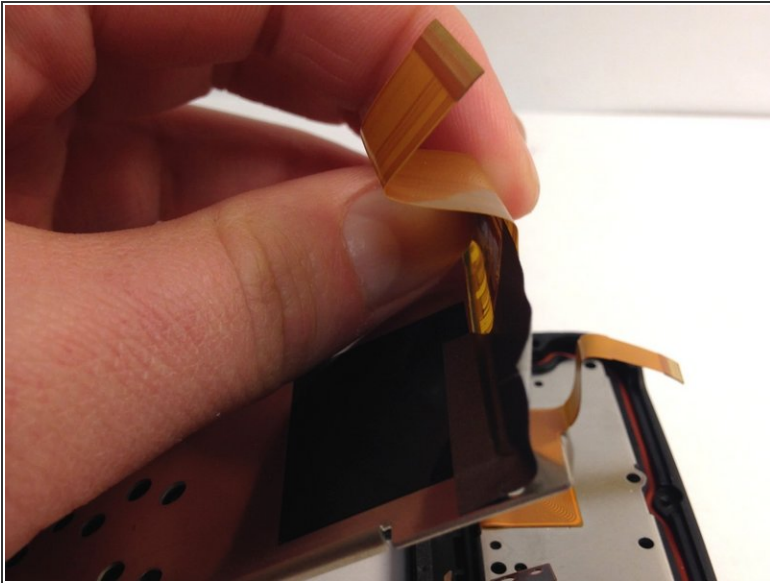
- Carefully remove the back cover from the camera body.

Step 10 — LCD Screen



- Using a Phillips #000 screwdriver, remove all 11, 4mm screws on the LCD screen cover.
- Two screws are located on the right.
- The remaining screws are hidden behind a connector ribbon on the left.

Step 11



- Pull the LCD screen from the plastic frame after removing all of the screws.

Step 12



- Using a pair of tweezers from the precision tweezer set, carefully remove the screen from the metal frame.

⚠ Since the tweezers could shatter the screen, causing for broken glass, exercise extreme caution.

To reassemble your device, follow these instructions in reverse order.