



Nikon Coolpix B700 Flash Unit Replacement

How to remove the flash assembly on a Nikon Coolpix B700.

Written By: Carlos Salgado



INTRODUCTION

This guide shows how to replace the flash assembly. The flash can be replaced if the bulb stops working.

TOOLS:

- [Phillips #0 Screwdriver](#) (1)
 - [iFixit Opening Tools](#) (1)
 - [Metal Spudger](#) (1)
 - [Tweezers](#) (1)
 - [Halberd Spudger](#) (1)
 - [Soldering Iron](#) (1)
-

Step 1 — Back Frame Assembly



- Use the Phillips screwdriver to remove the two 5.5mm screws on the left side of the camera.

Step 2



- Use the Phillips screwdriver to remove the seven 5.5mm screws from the bottom of the camera.

Step 3



- Use the Phillips screwdriver to remove the two 5.5mm screws on the right side of the camera.
- Open the HDMI flap to remove a 5.5mm screw.
- ☑ Don't forget to replace the hidden screw under the HDMI flap during reassembly.

Step 4



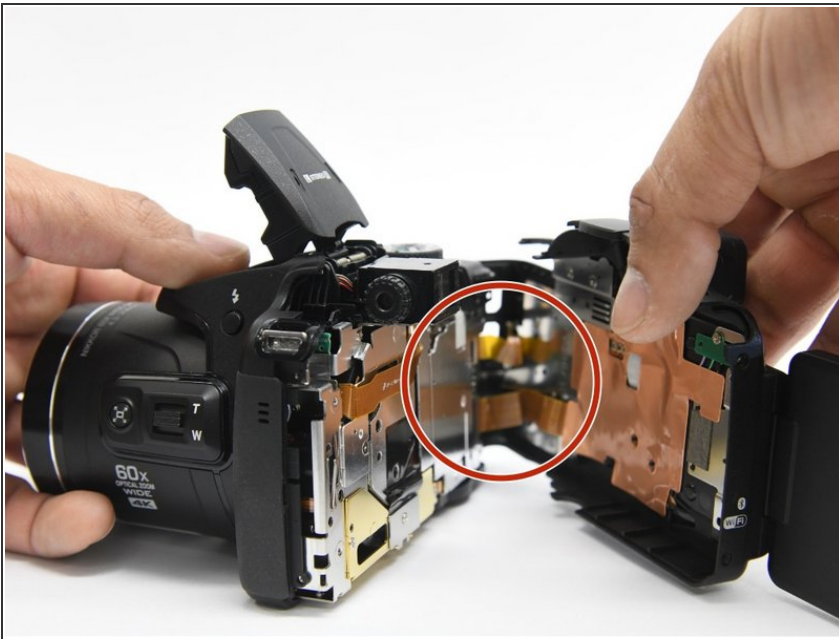
- Use the Phillips screwdriver to remove the two 5.5mm screws under the LCD panel.

Step 5



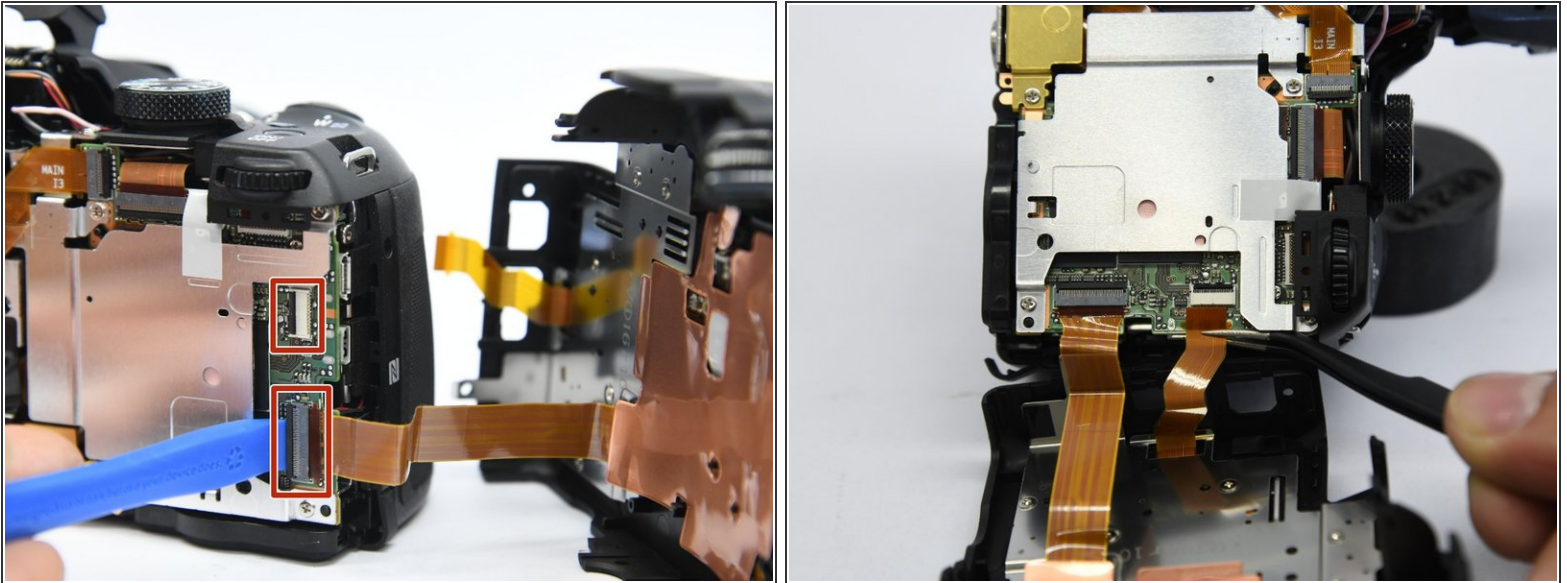
- Open the flash assembly and insert the spudger into the slot under the flash unit and twist.
- While twisting, pry apart the shell to split the camera in half.

Step 6



⚠ Be careful not to damage the ribbons that connect the halves together.

Step 7



- Place the pry tool under the black latch. Lift gently until the latch flips up.
- Gently pull the ribbon away from the latch.

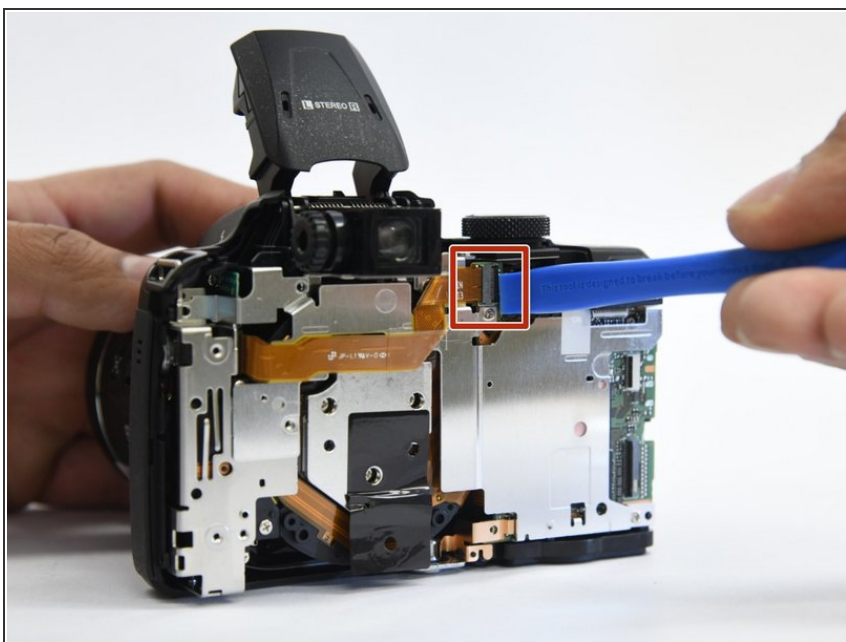
⚠ Be gentle when taking ribbons out and apart because they are fragile.

Step 8 — Internal Bracket



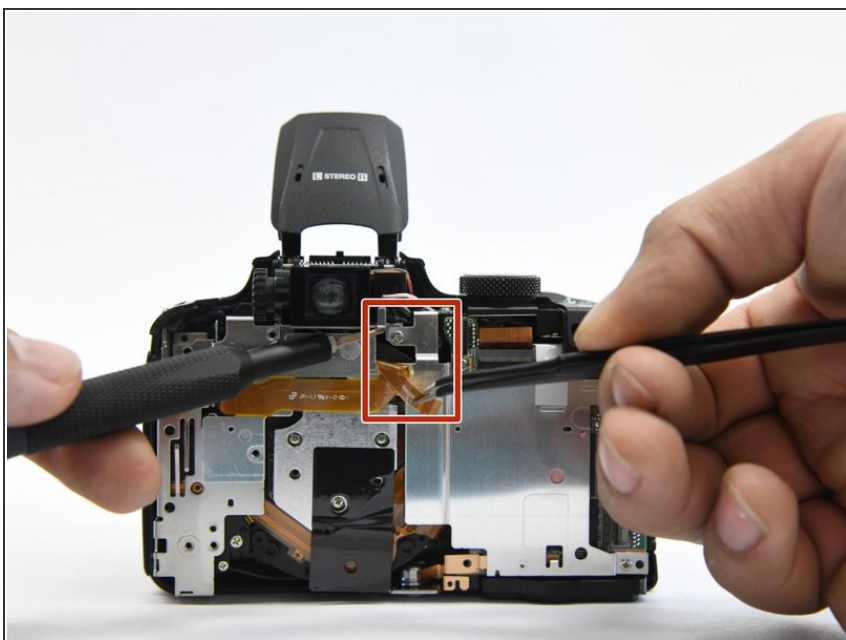
- Use the Phillips screwdriver to remove the remaining five 5.55mm screws.
- Remove the single 6mm screw.

Step 9



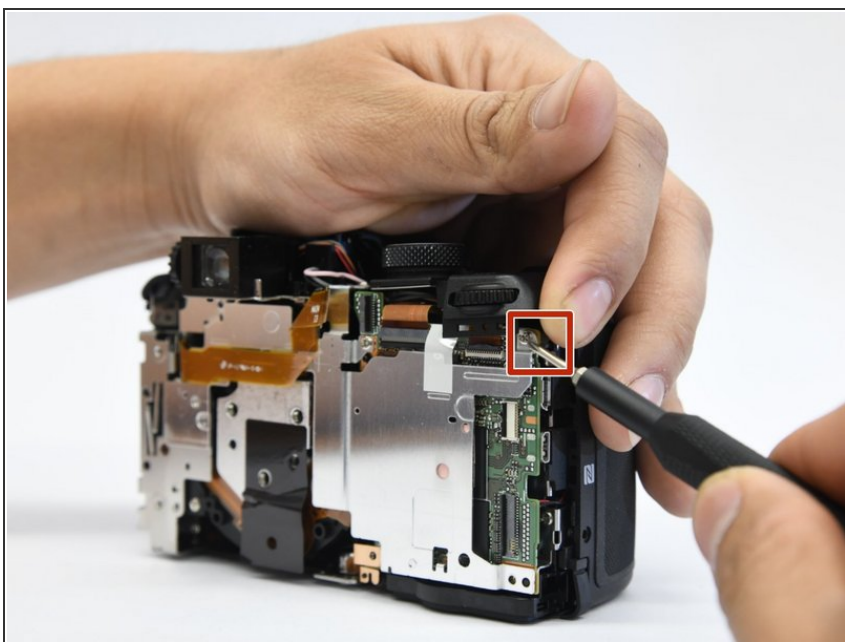
- Insert the pry tool under the latch and gently lift up to remove the ribbon.

Step 10



- Move the ribbon out of the way to reveal the hidden screw.

Step 11



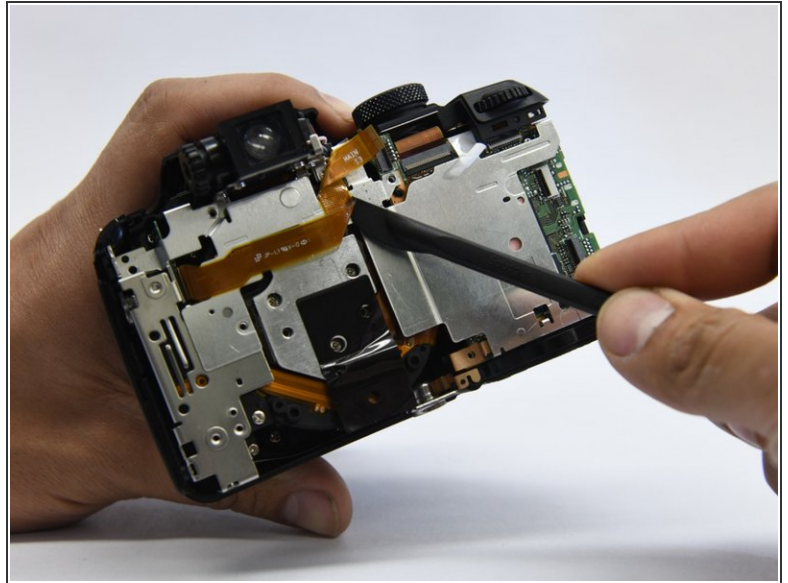
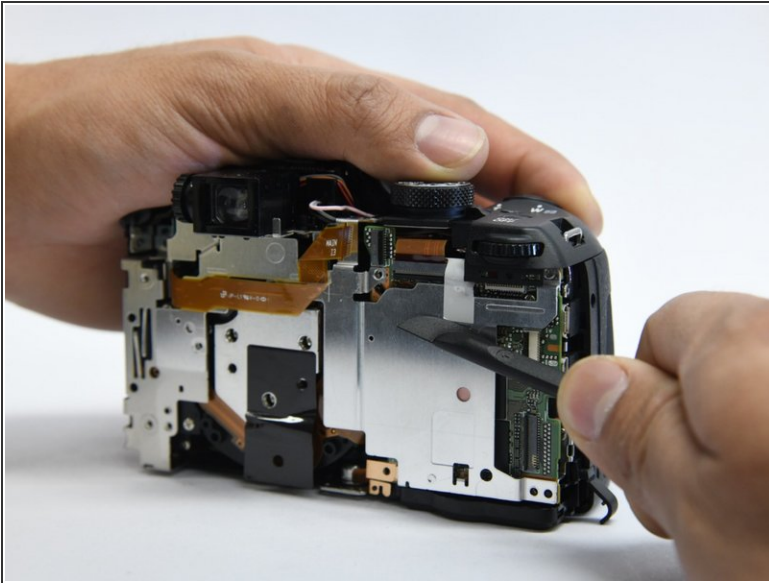
- Lift the button assembly gently to give access to remove the 4mm screw.

Step 12



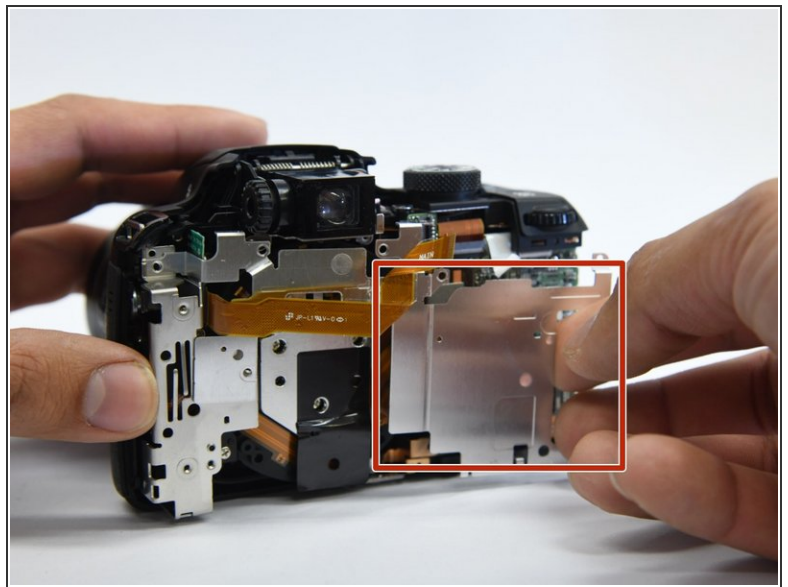
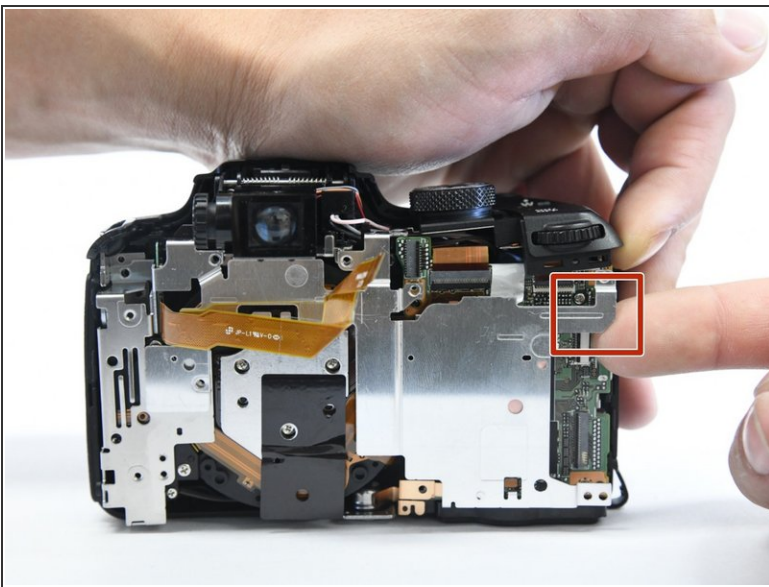
- On the top of the camera, remove the 6mm screw.

Step 13



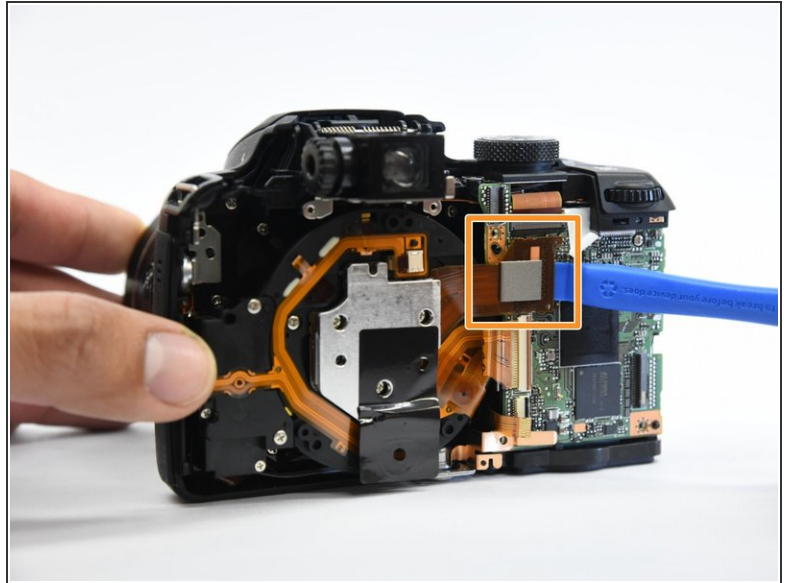
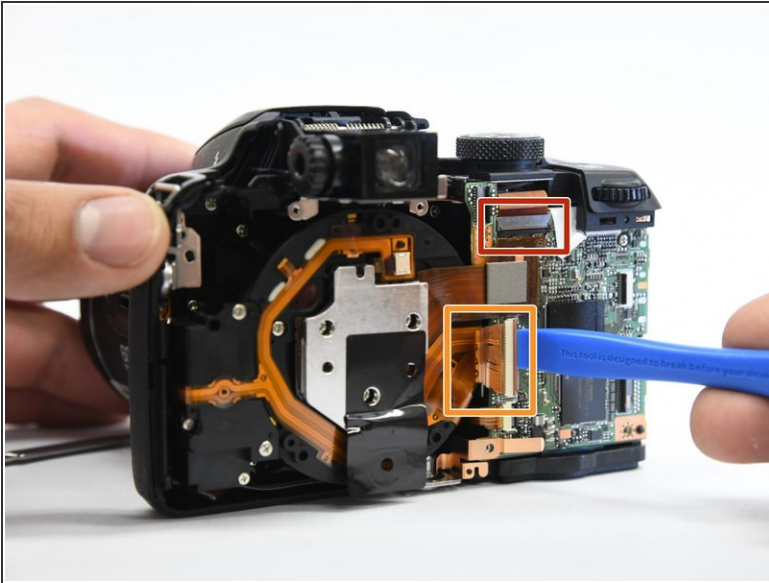
- With the spudger tool gently pry off the white tap holding in the bracket.
- Use the same tool to remove the glued-on ribbon.

Step 14



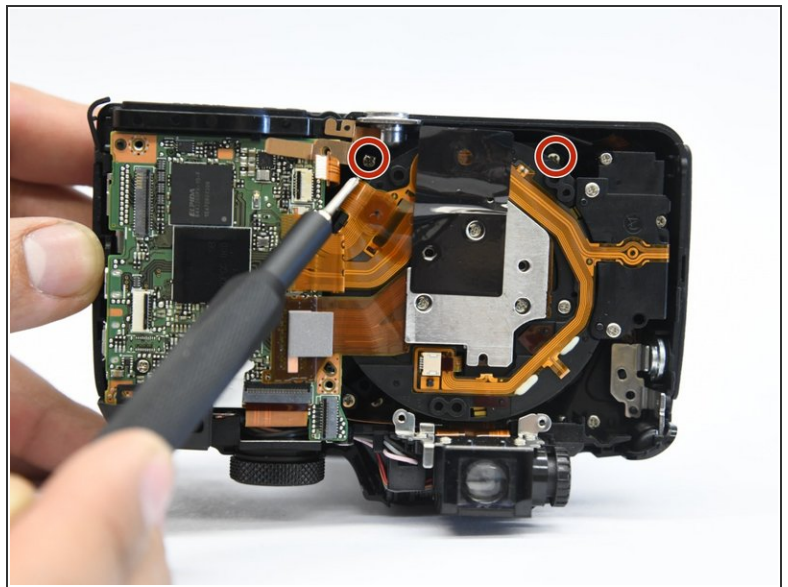
- Gently lift up the button assembly to slide the bracket out.

Step 15



- With the pry tool gently lift up the latch and pull the cable toward the lens assembly.
- Use the pry tool again and place it under the ribbon and lift straight up to disconnect the ribbon.

Step 16 — Lens Assembly



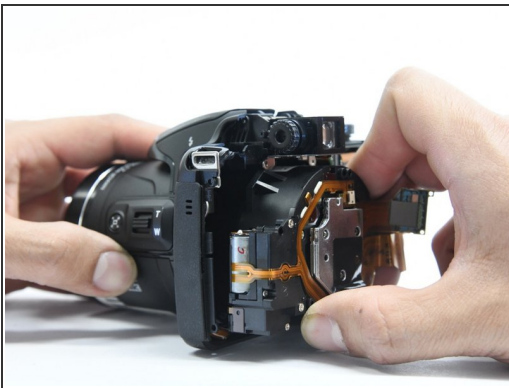
- Use the Phillips screwdriver to remove the four 6 mm screw that hold on the bracket housing.

Step 17



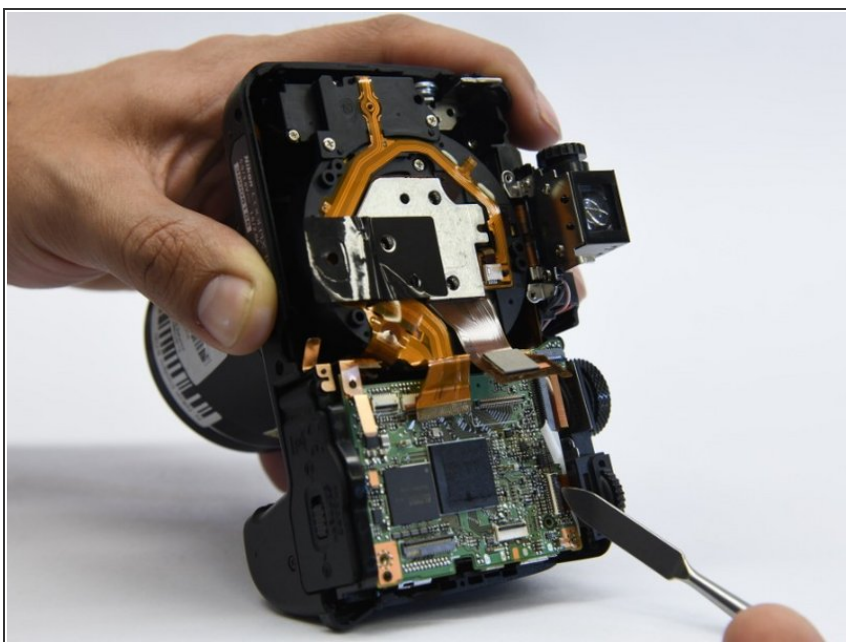
- Remove the tripod mount from it's slot.

Step 18



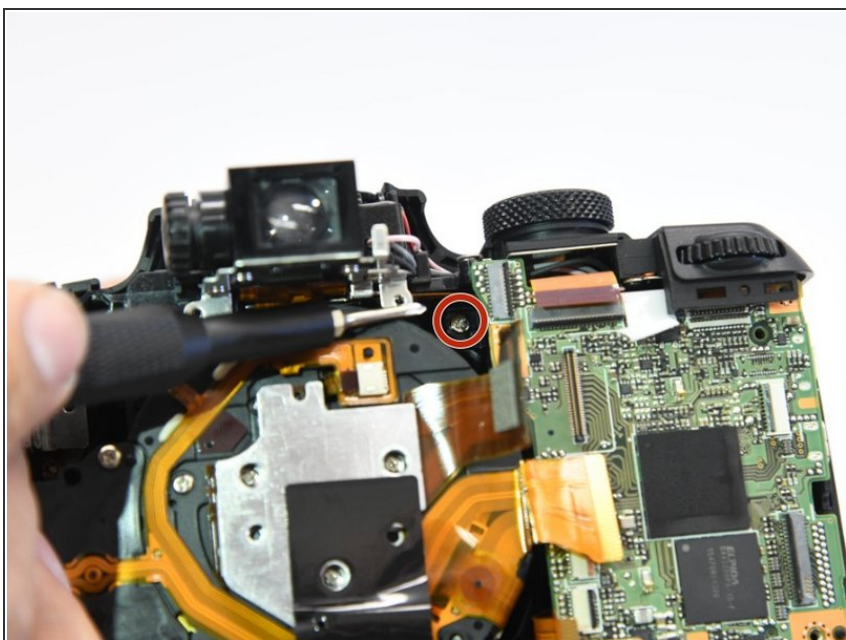
- Now you just have to slide the lens assembly out of the housing.

Step 19 — Motherboard



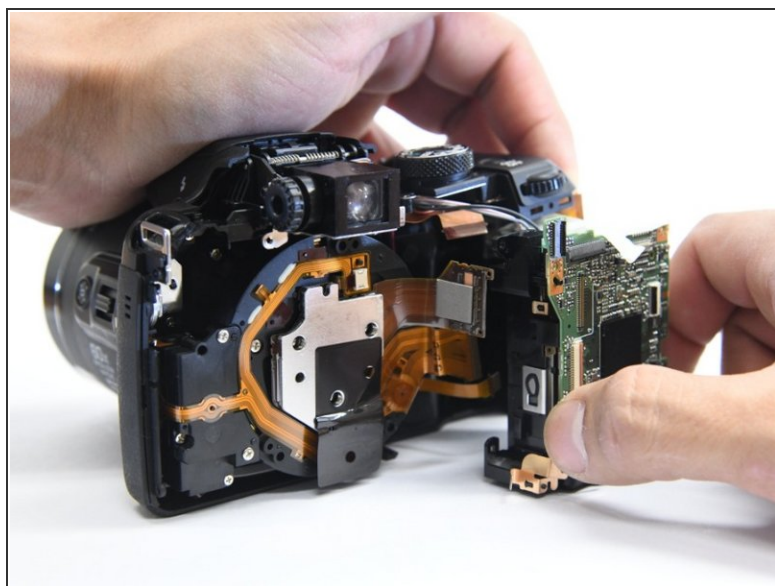
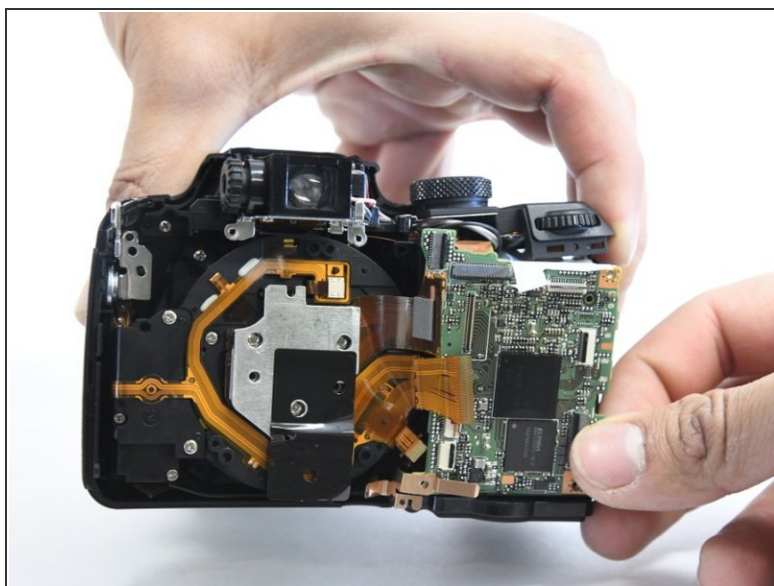
- Use the metal spudger to open the latch to remove the ribbon.

Step 20



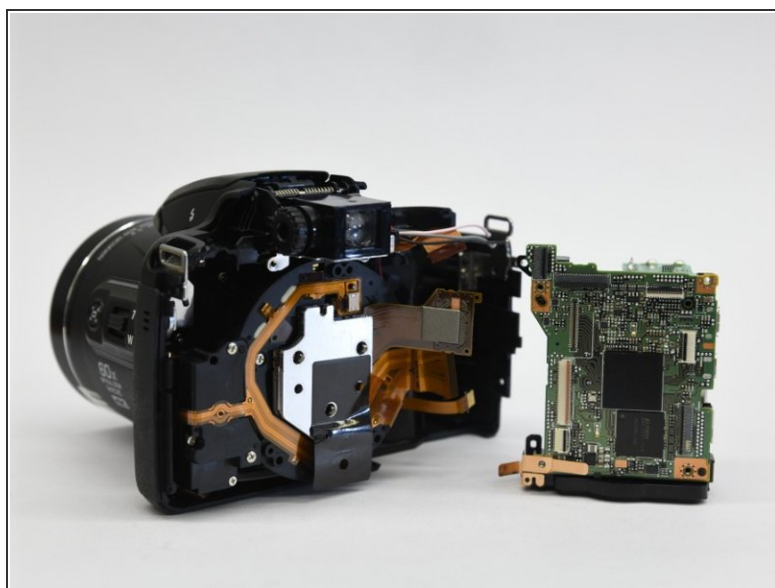
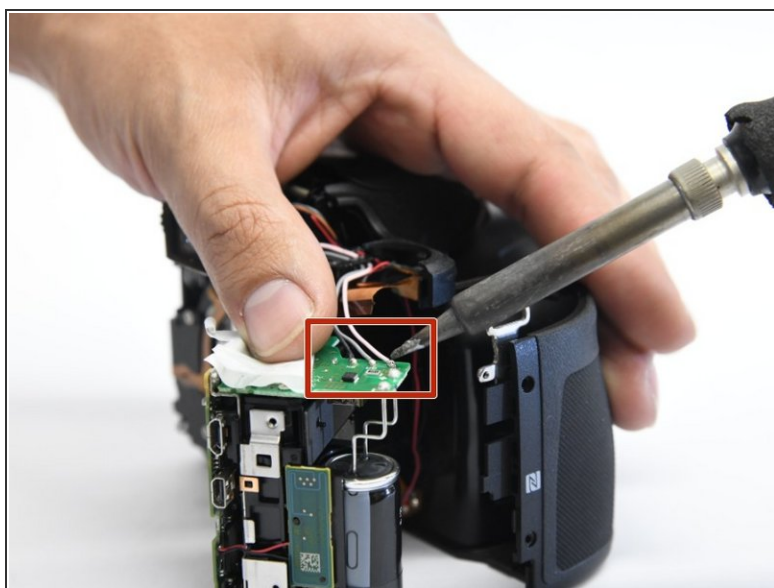
- Use the Phillips screwdriver to remove the single 6 mm screw.

Step 21




- Gently lift the button assembly. Slide the motherboard out from the shell.

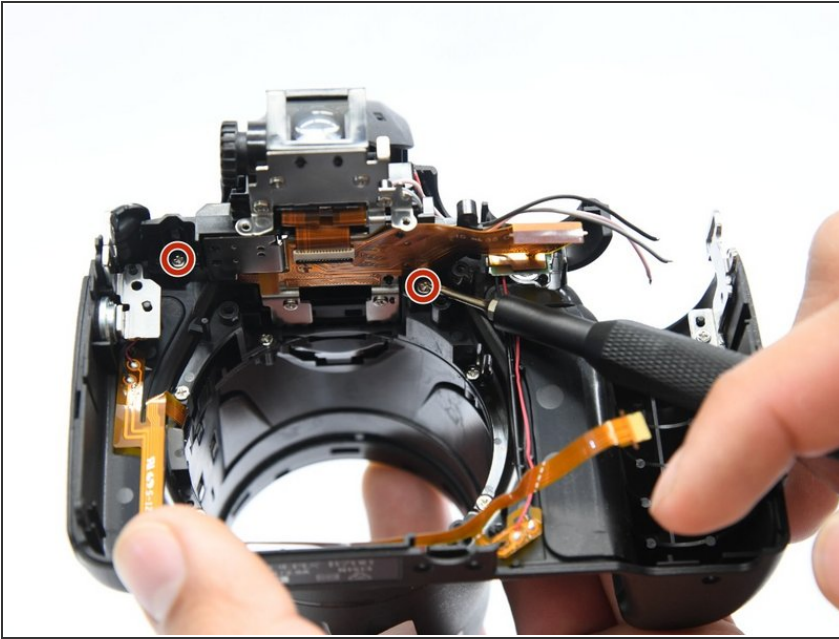
Step 22



- Desolder the black, gray, and white wires from the motherboard.

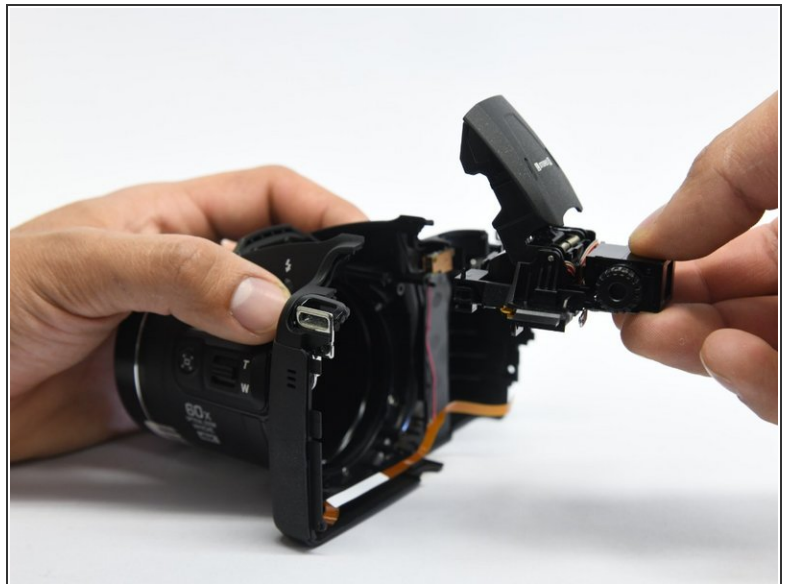
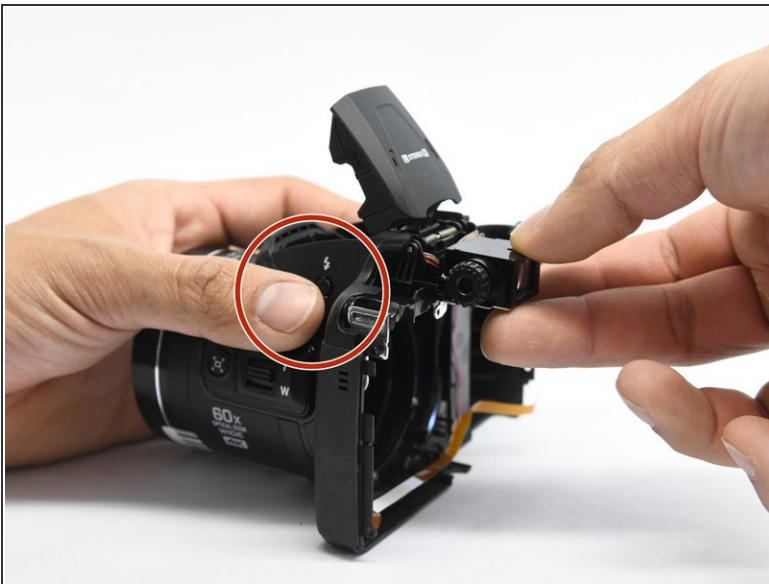
 The motherboard is labeled with the wire colors.

Step 23 — Flash Unit



- Using a Phillips screwdriver, remove the two 6 mm screws that hold the flash assembly.

Step 24



- Now while pushing the flash button slide out the flash assembly from the housing.

⚠ The flash button can fall out when removing the assembly.

🔧 During reassembly, put in the assembly first then reconnect the flash button.

To reassemble your device, follow these instructions in reverse order.