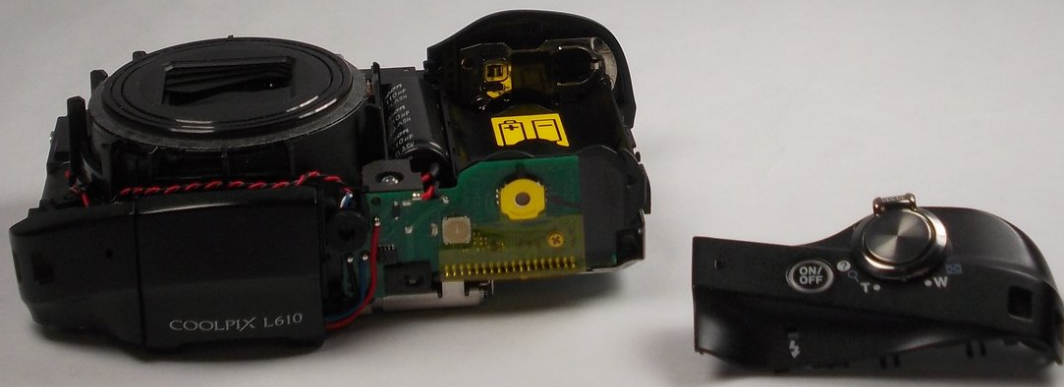




Nikon Coolpix L610 Power/Shutter Button Assembly Replacement

When attempting to turn on the camera the power button does not click and appears to be jammed in. This will require replacing the power button.

Written By: Alex Miragliotta



INTRODUCTION

This is a guide to remove the power button. It is a simple task that can be done after removing the outer case of the camera.

TOOLS:

- [iFixit Opening Tools](#) (1)
 - [Phillips #00 Screwdriver](#) (1)
-

Step 1 — Plastic Cover



- Remove the four (3.20 mm) Phillips #00 screws at the bottom of the device.

Step 2



- Remove the top (4.10 mm) Phillips #00 screw adjacent to the battery compartment.
- Remove the bottom (3.20 mm) Phillips #00 screw adjacent to the battery compartment.

Step 3



- Remove the top (4.20 mm) Phillips #00 screw adjacent to the mic side of the camera and opposite the battery side.
- Remove the lower (3.20 mm) Phillips #00 screw adjacent to the mic side of the camera and opposite of the battery side.

Step 4



- Separate the case using the plastic prying tool. This can be done by placing the tool in the position that is shown and in the position on the left side of the camera.

Step 5 — Power/Shuttter Button Assembly



- Remove the panel containing the power and shutter button.

To reassemble your device, follow these instructions in reverse order.