



Nikon Coolpix L830 Back Casing Replacement

Use this prerequisite-only guide to remove the back cover of your Nikon Coolpix L830 in order to reach internal components.

Written By: Taylor Hetrick



INTRODUCTION

To reach internal components of the Nikon Coolpix L830 such as the motherboard and shutter button, first removing the back outer surface component is necessary. Following the steps of this prerequisite-only guide will allow you to remove the back casing and access internal components.



TOOLS:

- [Phillips #000 Screwdriver](#) (1)
 - [iFixit Opening Tools](#) (1)
-

Step 1 — Back Casing



- Use a Phillips #000 screwdriver to unscrew the two 3.0mm Phillips screws located on the side of the camera with the HDMI port.
- ❗ The HDMI port side will be on the left if you are looking at the back of the camera with the LCD monitor.
- ❗ One screw is located under the gray flap.

Step 2



- Unscrew the five 3.0mm Phillips #000 screws that are located on the bottom side of the camera.

Step 3



- Unscrew the 4.0mm Phillips #000 screw located underneath the grey flap on the side of the camera with the "DC IN 5.0 V" marker.
- ⓘ This will be on the right if you are looking at the back LCD monitor side.
- Unscrew the exposed 3.0mm Phillips #000 screw on the same side.

Step 4



- Press the flash button to open the flash component.
- Remove the 3.0mm Phillips #000 screw located directly in-between the two arms.

Step 5



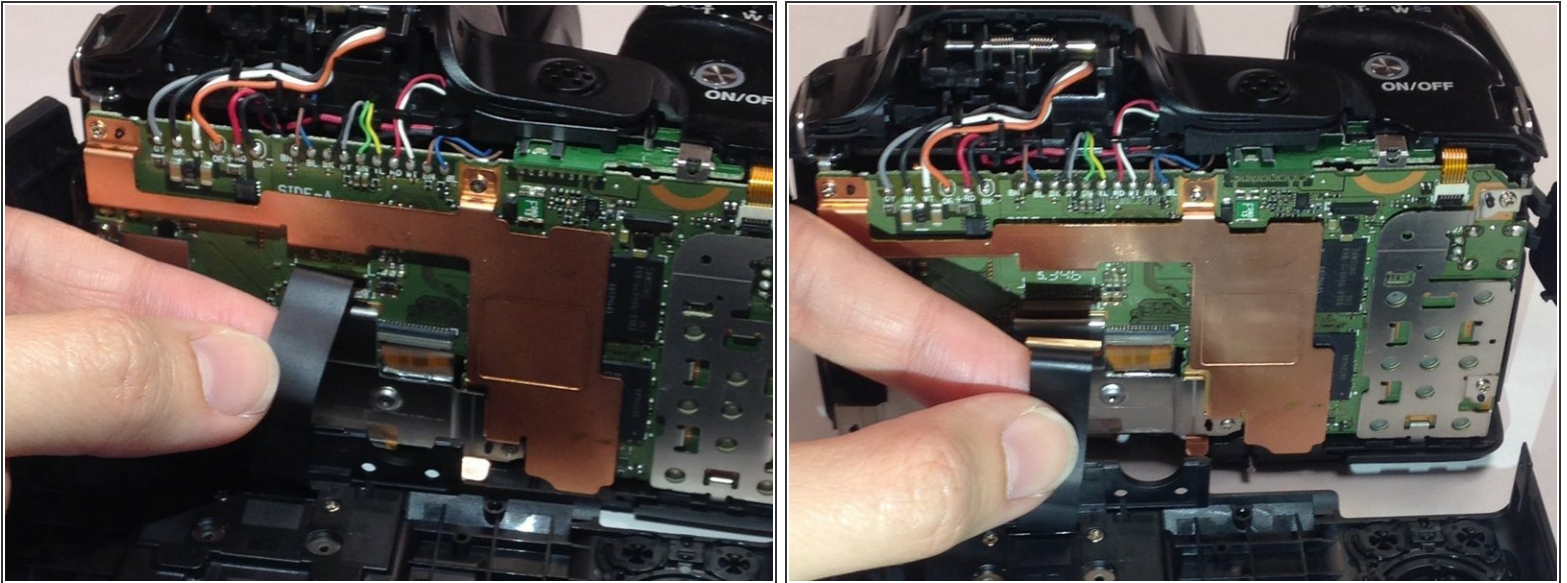
- Open the LCD monitor to reveal two 2.0mm Phillips screws.
- Remove the 2.0mm Phillips #000 screws.

Step 6



- ① Make sure to open the plastic grey flaps on either side of the camera before proceeding with this step.
- Insert a plastic opening tool between the back and front surface components of the camera.
- Wiggle the plastic opening tool backwards and forwards along the top edge until the back surface comes off.
- ⚠ Remove the back casing gently to not damage the LCD ribbon connector or inner camera components.

Step 7



- Gently pull the LCD ribbon connector up to allow the back casing to be completely removed.

To reassemble your device, follow these instructions in reverse order.