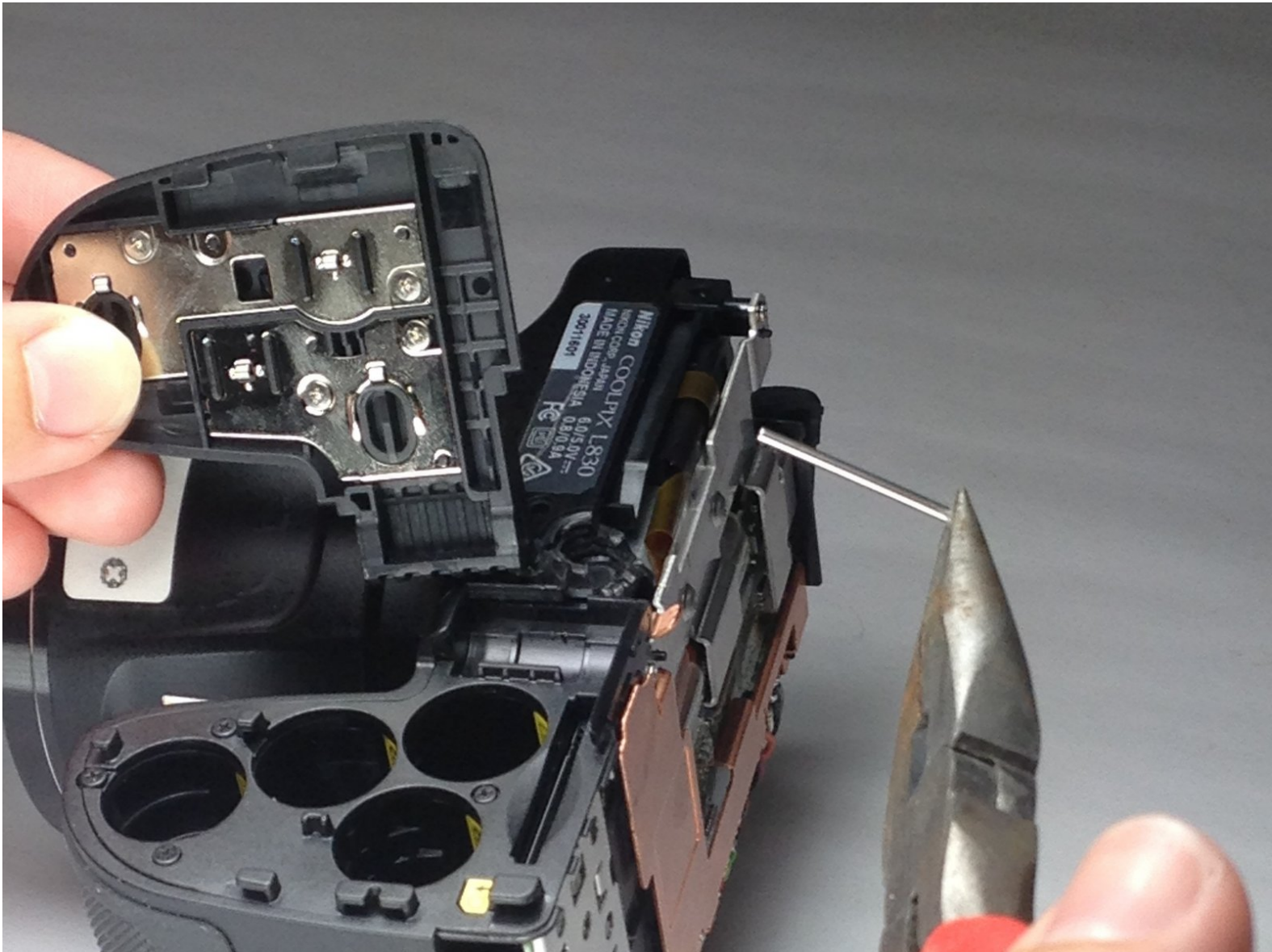




Nikon Coolpix L830 Battery Cover Replacement

Replacing a broken battery cover to allow battery powering and safety for the Nikon Coolpix L830.

Written By: Blake Johnson



INTRODUCTION

If the battery cover on your Nikon Coolpix L830 is broken, replacement is necessary. Following these steps will allow you to replace the broken battery cover with a new one to allow your camera to stay powered and prevent the environment from affecting their performance.

TOOLS:

- [Phillips #000 Screwdriver](#) (1)
 - [iFixit Opening Tools](#) (1)
 - [Small Needle Nose Pliers](#) (1)
-

Step 1 — Back Casing



- Use a Phillips #000 screwdriver to unscrew the two 3.0mm Phillips screws located on the side of the camera with the HDMI port.
- ❗ The HDMI port side will be on the left if you are looking at the back of the camera with the LCD monitor.
- ❗ One screw is located under the gray flap.

Step 2



- Unscrew the five 3.0mm Phillips #000 screws that are located on the bottom side of the camera.

Step 3



- Unscrew the 4.0mm Phillips #000 screw located underneath the grey flap on the side of the camera with the "DC IN 5.0 V" marker.
- ⓘ This will be on the right if you are looking at the back LCD monitor side.
- Unscrew the exposed 3.0mm Phillips #000 screw on the same side.

Step 4



- Press the flash button to open the flash component.
- Remove the 3.0mm Phillips #000 screw located directly in-between the two arms.

Step 5



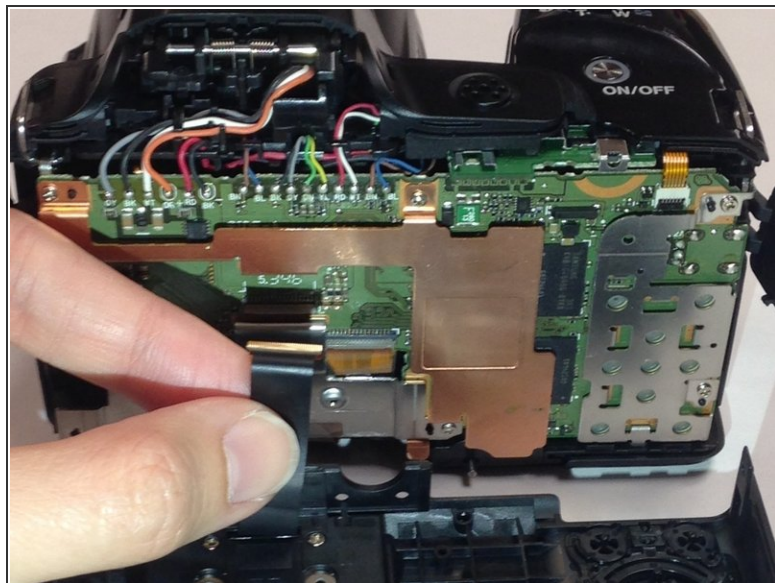
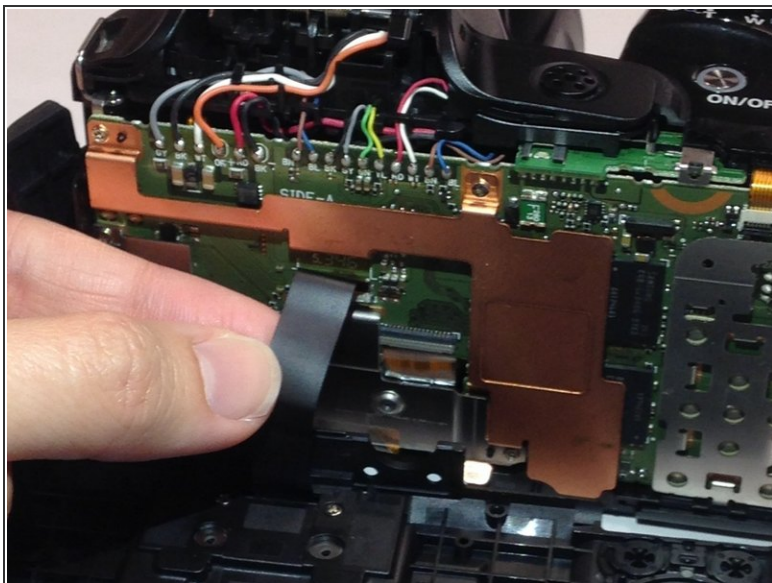
- Open the LCD monitor to reveal two 2.0mm Phillips screws.
- Remove the 2.0mm Phillips #000 screws.

Step 6



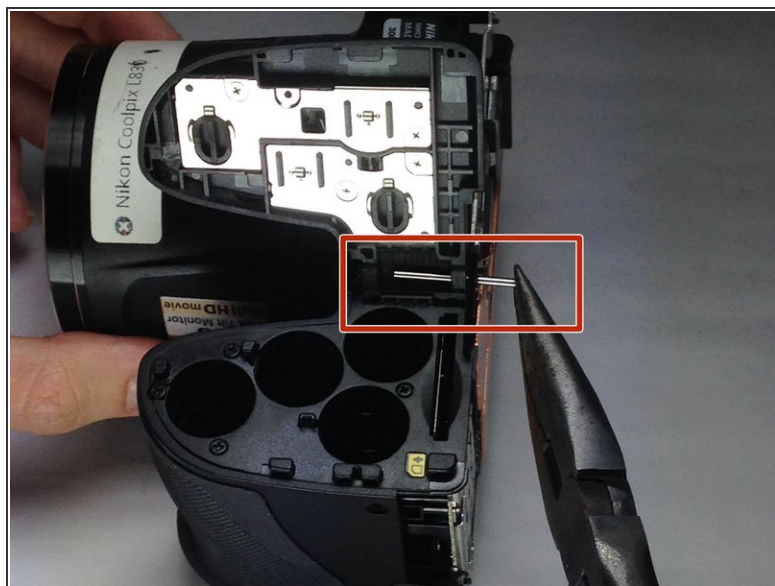
- i** Make sure to open the plastic grey flaps on either side of the camera before proceeding with this step.
- Insert a plastic opening tool between the back and front surface components of the camera.
 - Wiggle the plastic opening tool backwards and forwards along the top edge until the back surface comes off.
- !** Remove the back casing gently to not damage the LCD ribbon connector or inner camera components.

Step 7



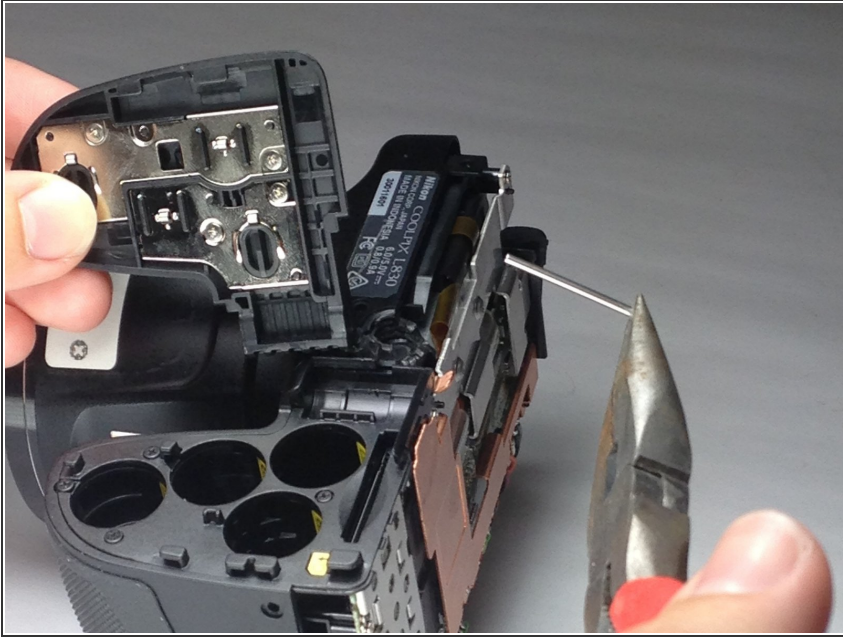
- Gently pull the LCD ribbon connector up to allow the back casing to be completely removed.

Step 8 — Battery Cover



- Using the needle nose pliers, remove the straight pin holding in the battery cover.

Step 9



- Lift off the battery cover to completely remove it.

To reassemble your device, follow these instructions in reverse order.