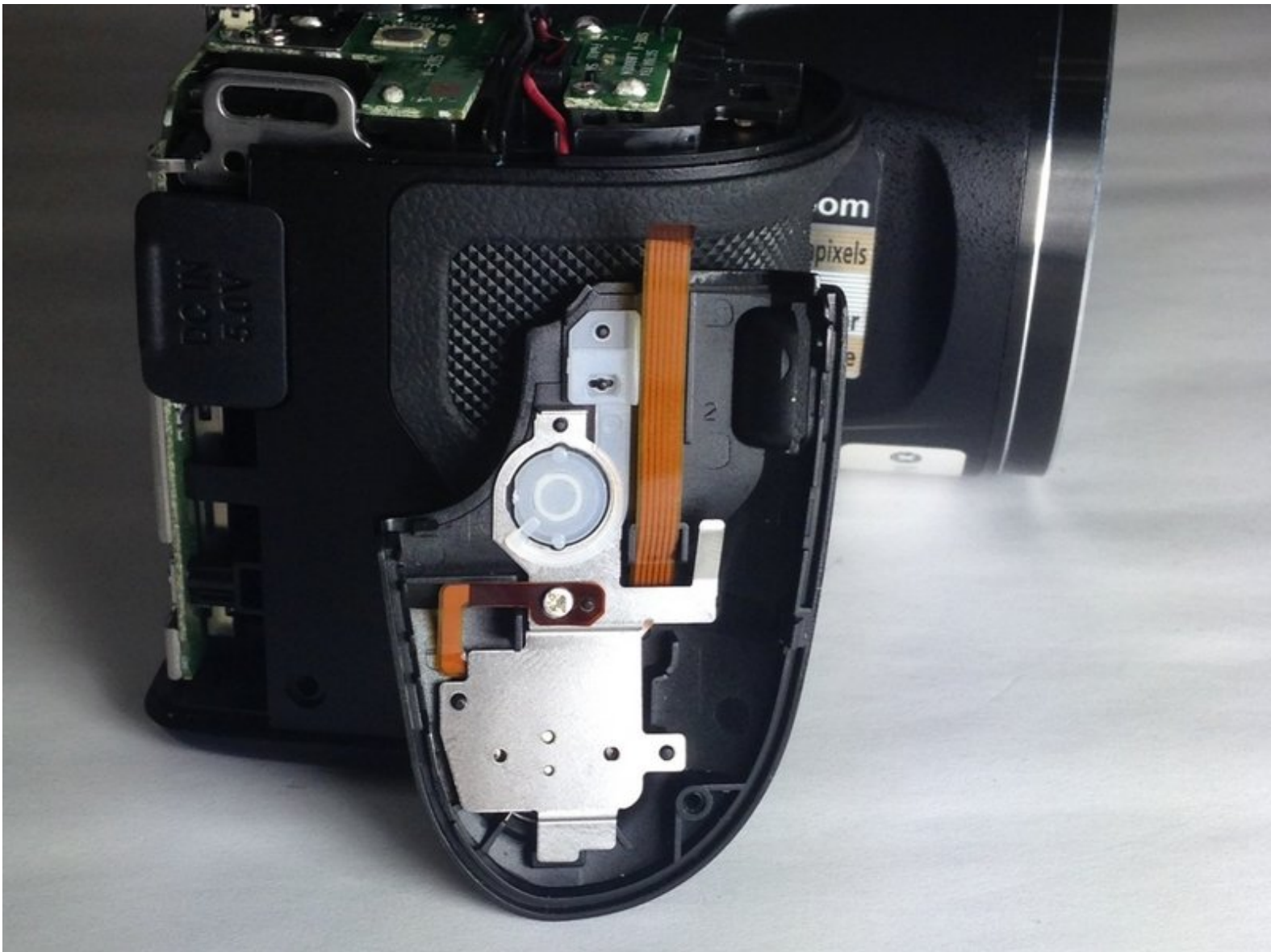




Nikon Coolpix L830 Shutter Button Replacement

Replacing a broken or damaged shutter button to allow access to take photos on Nikon Coolpix L830.

Written By: Taylor Hetrick



INTRODUCTION

If the shutter button on your Nikon Coolpix L830 is damaged, replacement is necessary. Following these steps will allow you to replace the broken button with a new one to allow complete shutter functionality to return.

TOOLS:

- [Phillips #000 Screwdriver](#) (1)
 - [iFixit Opening Tools](#) (1)
-

Step 1 — Back Casing



- Use a Phillips #000 screwdriver to unscrew the two 3.0mm Phillips screws located on the side of the camera with the HDMI port.
- ❗ The HDMI port side will be on the left if you are looking at the back of the camera with the LCD monitor.
- ❗ One screw is located under the gray flap.

Step 2



- Unscrew the five 3.0mm Phillips #000 screws that are located on the bottom side of the camera.

Step 3



- Unscrew the 4.0mm Phillips #000 screw located underneath the grey flap on the side of the camera with the "DC IN 5.0 V" marker.
- ⓘ This will be on the right if you are looking at the back LCD monitor side.
- Unscrew the exposed 3.0mm Phillips #000 screw on the same side.

Step 4



- Press the flash button to open the flash component.
- Remove the 3.0mm Phillips #000 screw located directly in-between the two arms.

Step 5



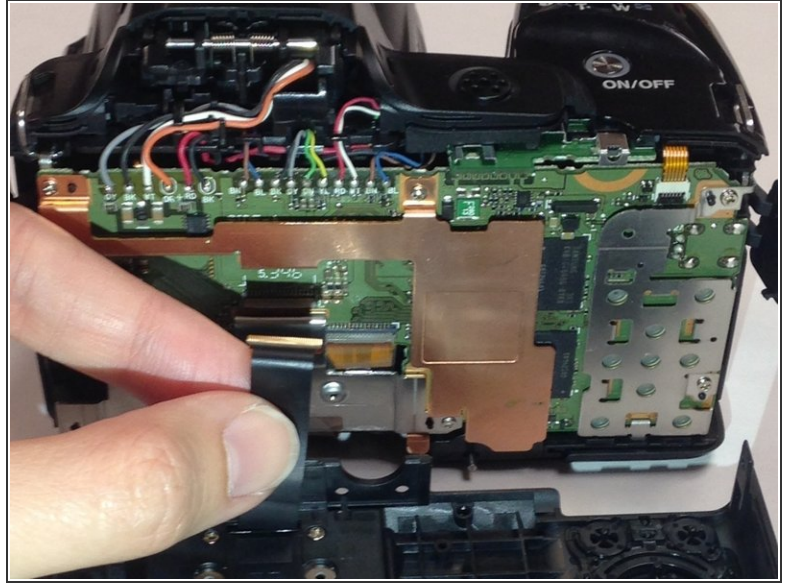
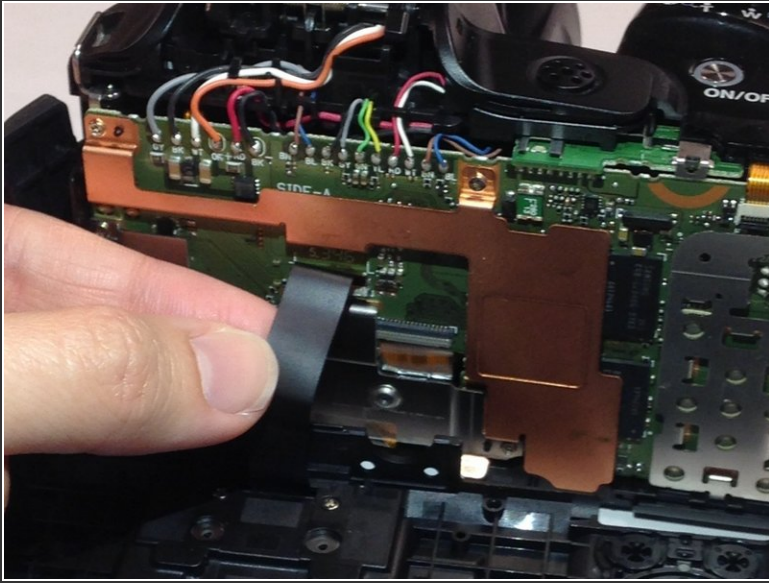
- Open the LCD monitor to reveal two 2.0mm Phillips screws.
- Remove the 2.0mm Phillips #000 screws.

Step 6



- ⓘ Make sure to open the plastic grey flaps on either side of the camera before proceeding with this step.
- Insert a plastic opening tool between the back and front surface components of the camera.
- Wiggle the plastic opening tool backwards and forwards along the top edge until the back surface comes off.
- ⚠ Remove the back casing gently to not damage the LCD ribbon connector or inner camera components.

Step 7



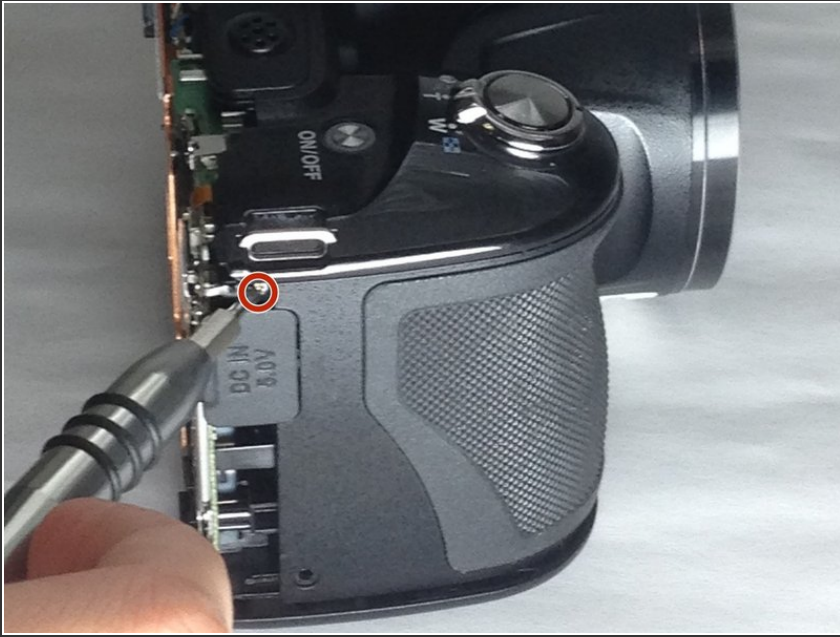
- Gently pull the LCD ribbon connector up to allow the back casing to be completely removed.

Step 8 — Shutter Button



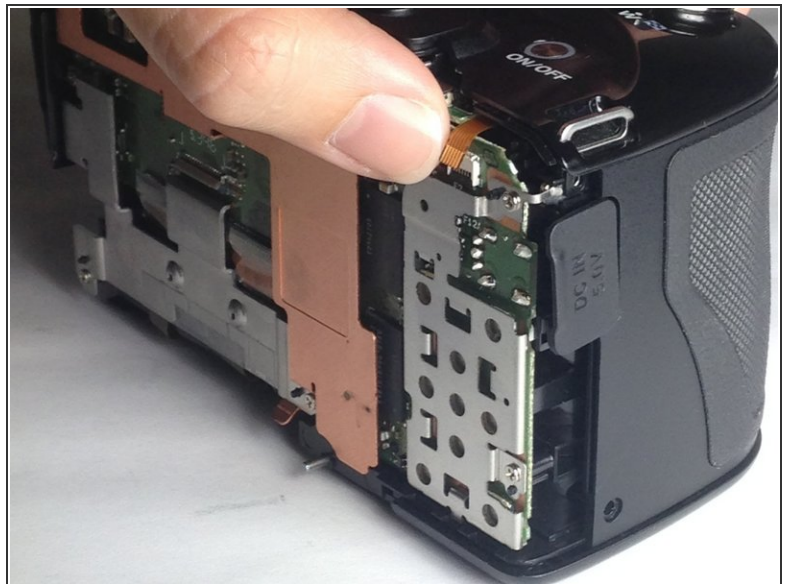
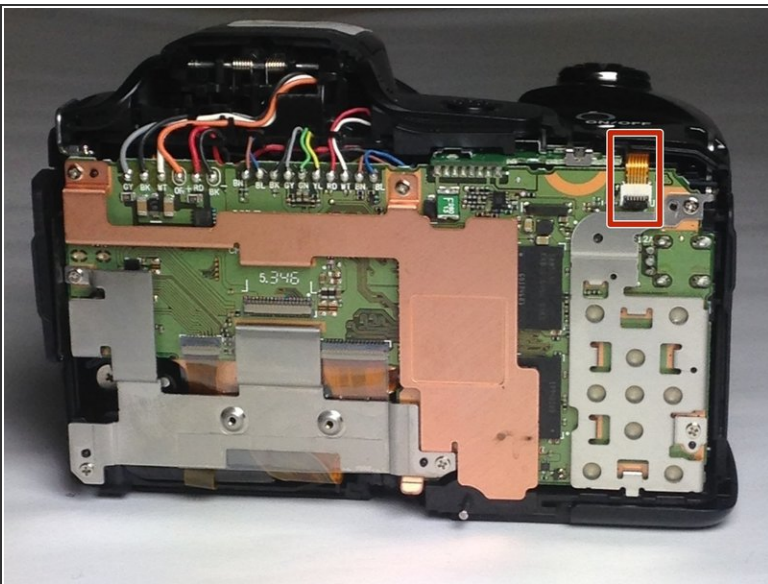
- Open the battery panel on the bottom of the camera by pushing the slider up and tugging the battery panel to the right.
- Remove the 3.0mm Phillips screw in the top battery panel.
- ⓘ The screw is located in the dark recesses at the end of the battery chamber, which will make screw removal difficult. Be gentle to avoid stripping screw.

Step 9




- Remove the 3.0mm Phillips #000 screw located above the grey power flap on the side of the camera.

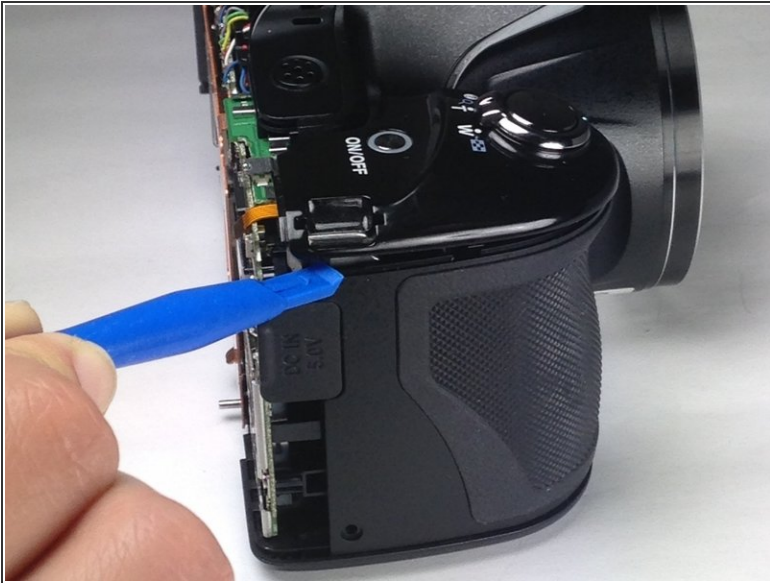
Step 10



- Use your finger to gently pull up the wire ribbon which connects the shutter button to the motherboard.

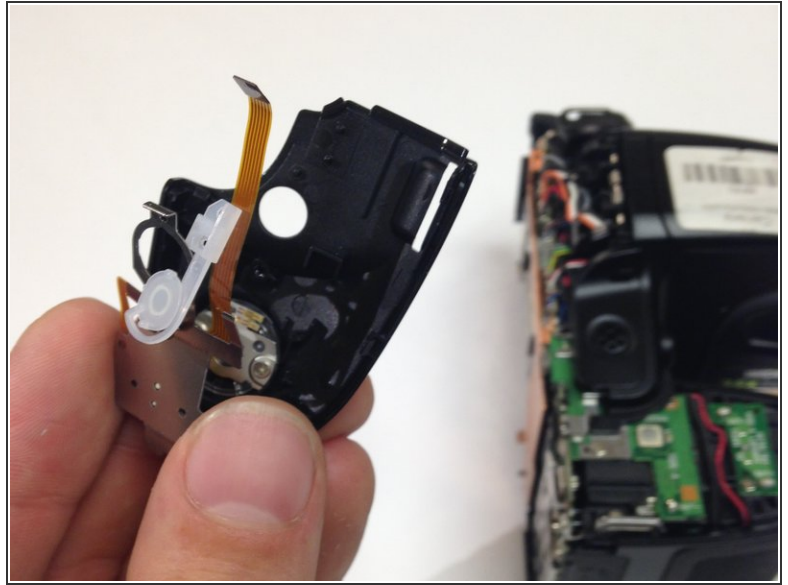
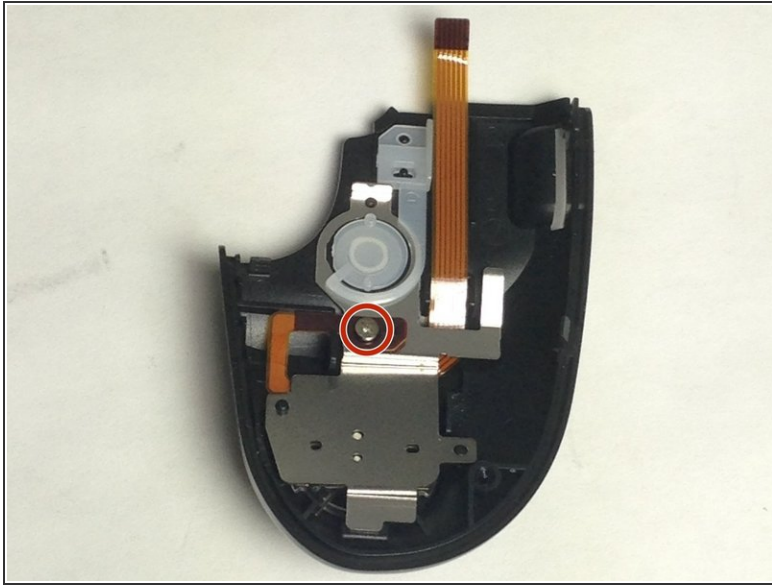
 The wire ribbon is located at the top right corner of the motherboard.

Step 11



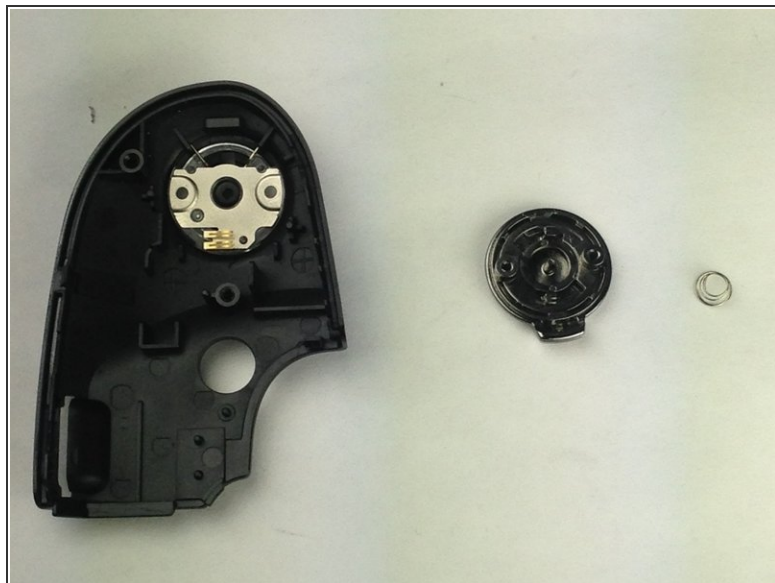
- Insert the blue plastic opening tool between the main casing and the shutter component.
- Wiggle the plastic opening tool up and down to pry off the shutter component.

Step 12



- Unscrew the single 2.0mm Phillips #000 screw located on the dark brown strip on the back of the shutter button panel.
- Once the Phillips screw is removed, gently take off the metal component with your hand or a wedge tool.
- ⓘ The on/off switch is not connected to the metal component, so be sure to keep track of it when removing.
- ⓘ Once the metal component is removed, the shutter button should be the only remaining part connected to the black shutter casing.

Step 13



- Remove the final two 2.0mm Phillips #000 screws, releasing the shutter button.
- ⓘ The shutter component has a spring attached. Be sure to carefully remove the shutter button and keep track of the small spring.

To reassemble your device, follow these instructions in reverse order.