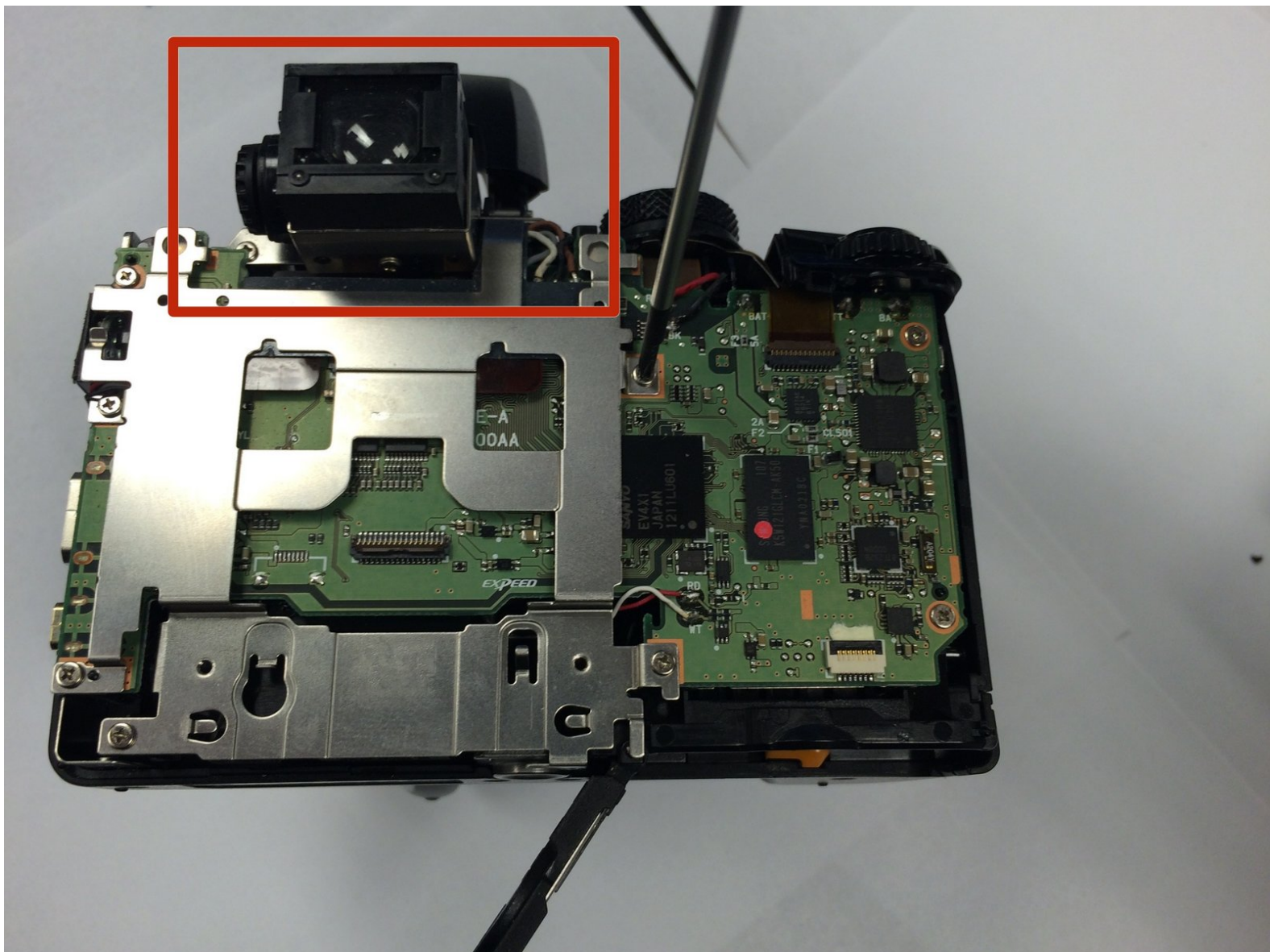




Nikon Coolpix P100 Viewfinder Replacement

This guide will show you how to replace the camera's flash

Written By: Nghiem Ngo



INTRODUCTION

This will show you how to open up the camera and replace the camera flash.



TOOLS:

- [Phillips #00 Screwdriver](#) (1)
 - [iFixit Opening Tools](#) (1)
-

Step 1 — Nikon Coolpix P100 Motherboard Access



- Turn the front of the camera toward you.

Step 2



- On the left side of the camera, use a Phillips #00 Precision Screwdriver to remove the two marked screws.

Step 3



- On the right side of the camera, remove the first visible screw above the HDMI and A/V OUT cover.

Step 4



- Lift the HDMI and A/V OUT cover to access the hidden screw between the two ports.
- Remove the screw

Step 5



- Flip the camera upside down and remove the seven marked screws.

Step 6



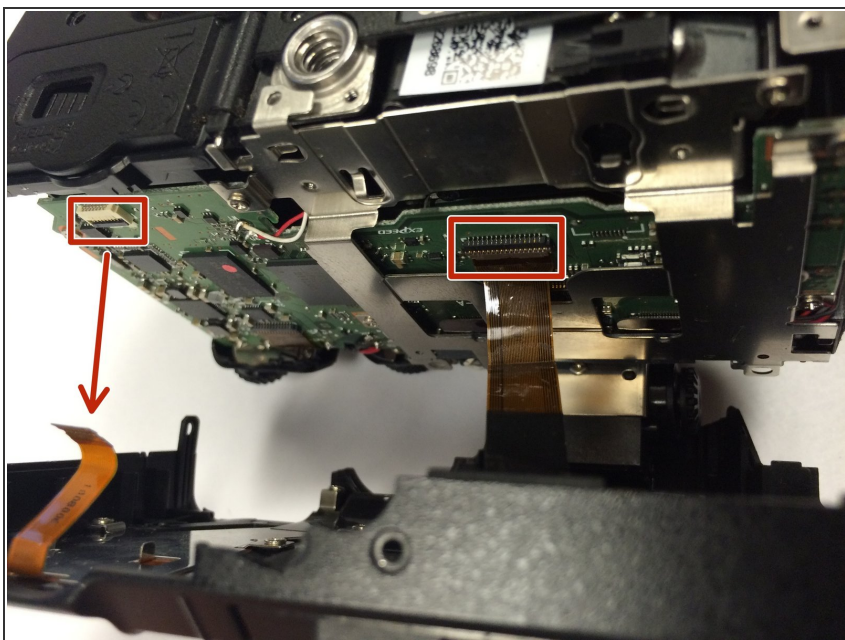
- Turn the back of the camera toward you.
- Lift the display panel and remove the two marked screws

Step 7



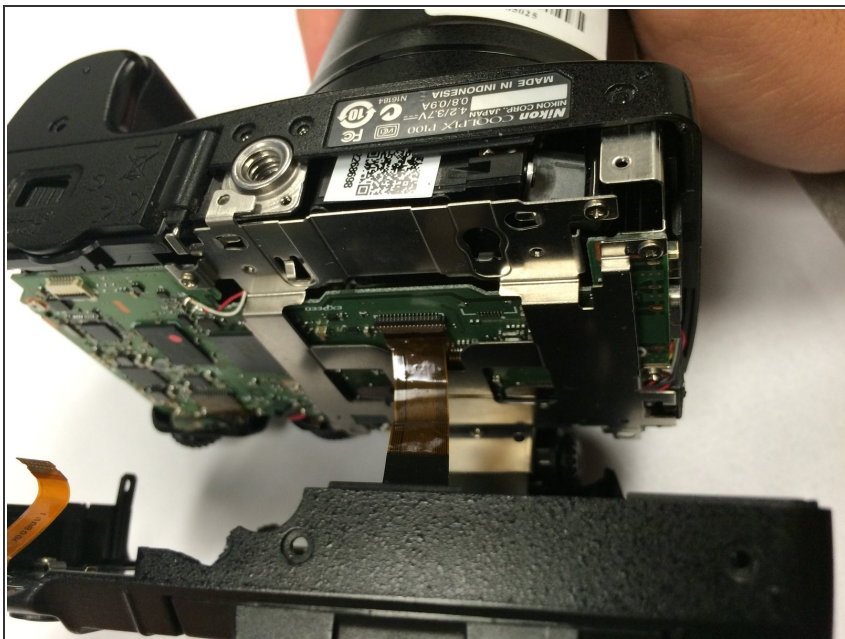
- Use a plastic iFixit opening tool to gently loosen the top and sides of the camera.

Step 8



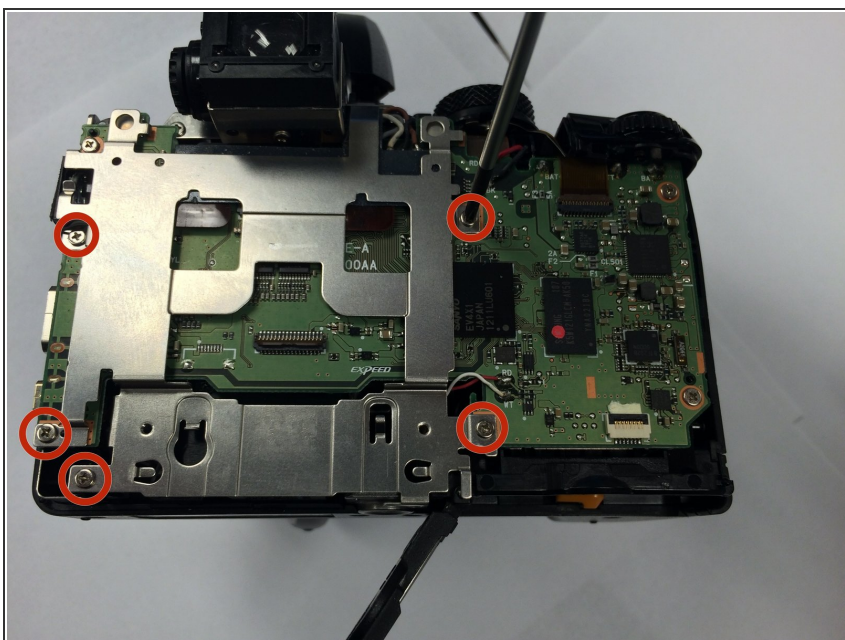
- Before fully opening the camera, identify the two marked ribbon cables
- Properly detach the ribbons before proceeding

Step 9



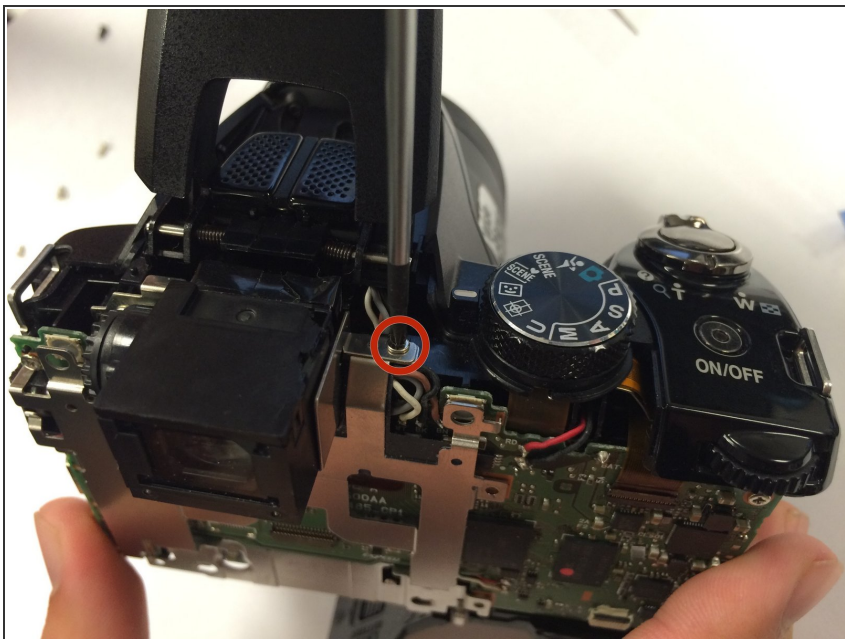
- Carefully open the camera.
- ⓘ Now you have partial access to the camera's motherboard.

Step 10



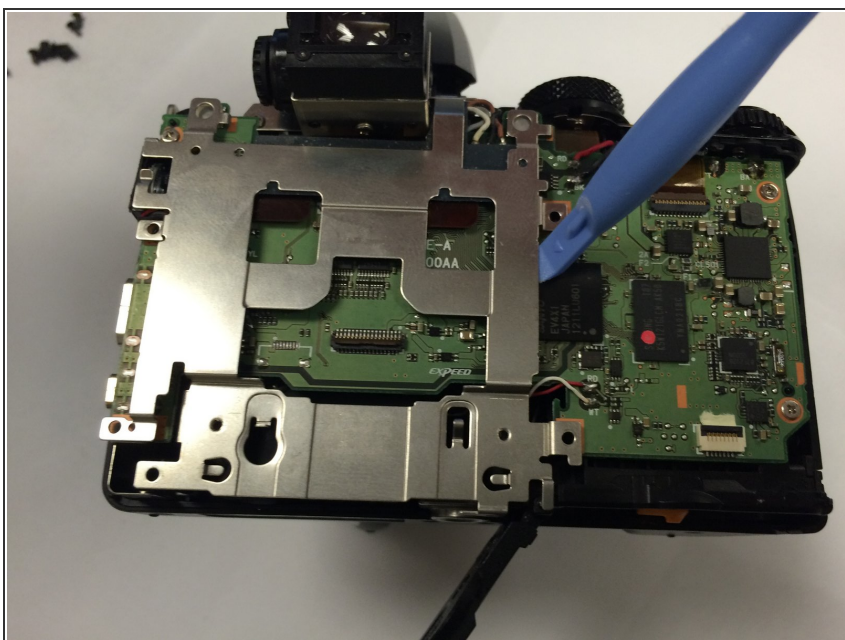
- Remove the five indicated screws that are attached to the metal plate.

Step 11



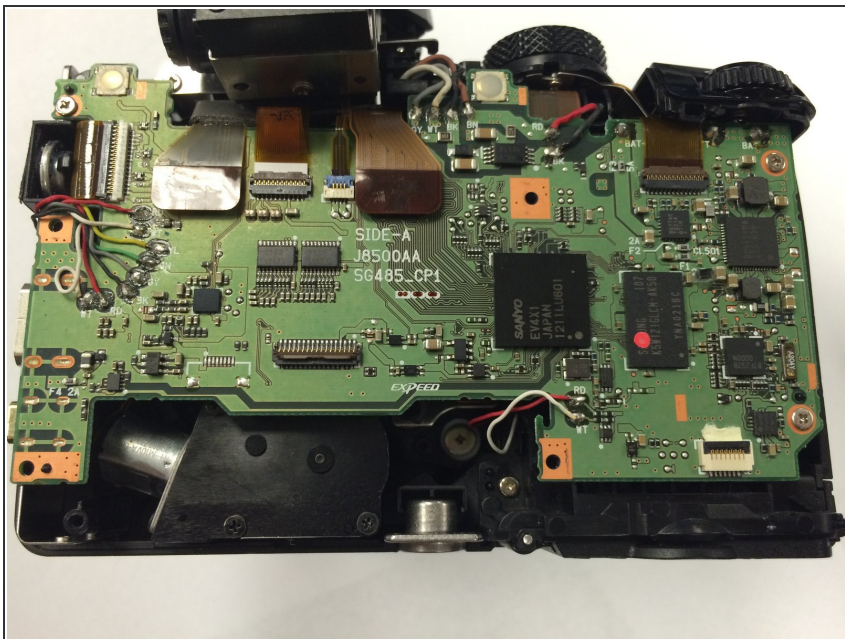
- Remove the hidden top screw that is attached to the metal plate.

Step 12



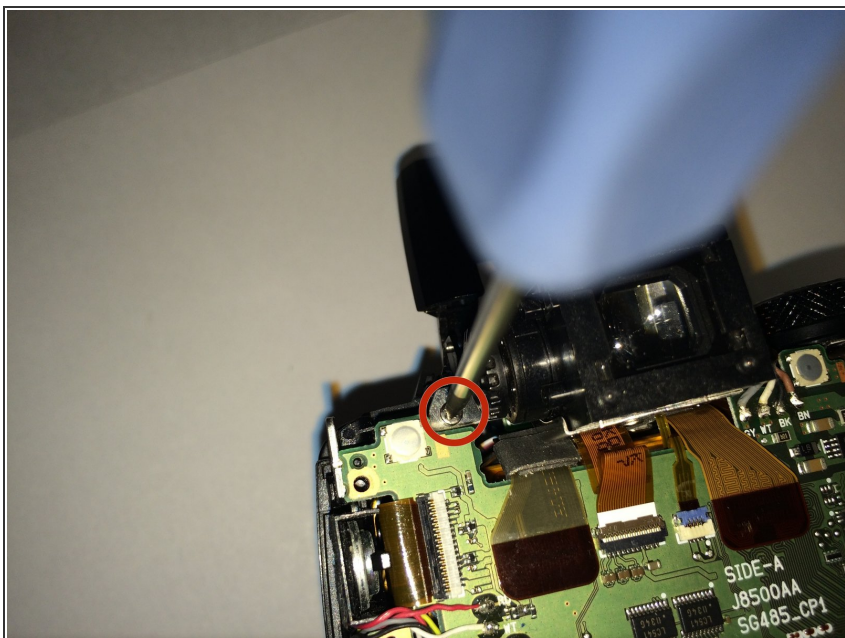
- Use a plastic iFixit opening tool to carefully loosen the metal plate.
- Remove the metal plate to access the camera's motherboard.

Step 13



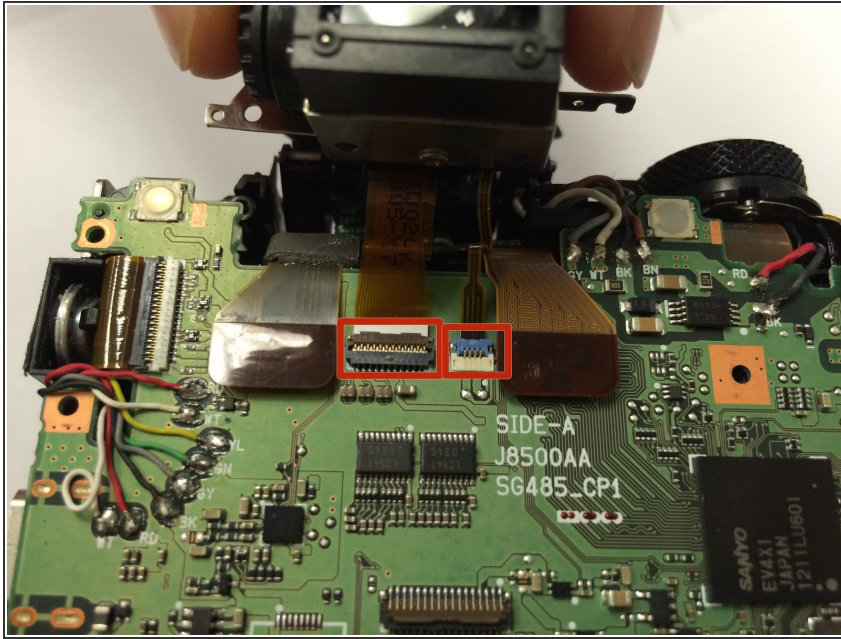
- Now you have access to the camera's motherboard

Step 14 — Viewfinder



- Remove the screw that is located on the left of the view finder.

Step 15



⚠ Carefully detach the two ribbon cables and detach the viewfinder.

To reassemble your device, follow these instructions in reverse order.