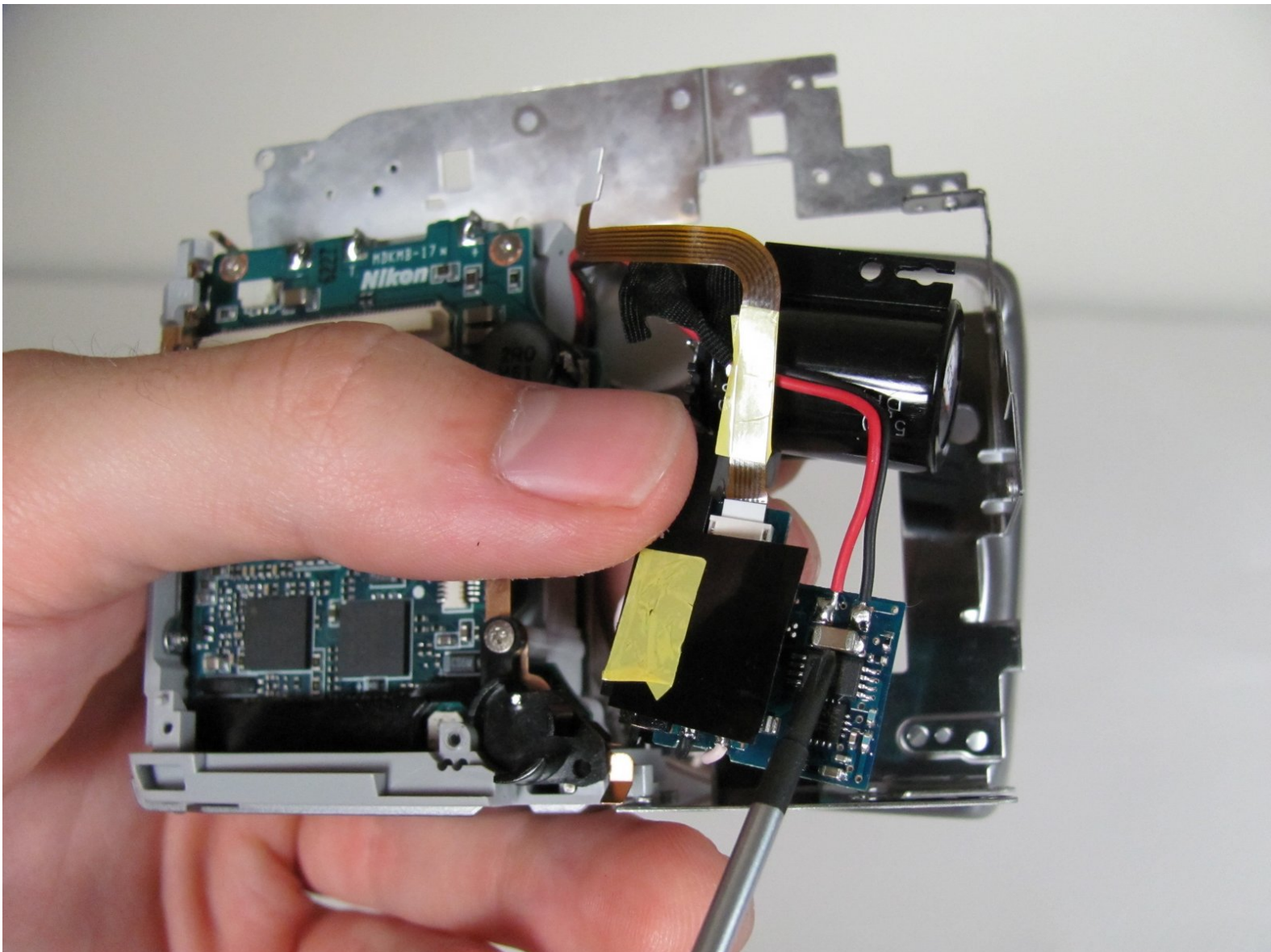




Nikon Coolpix P4 Flash Bulb Replacement

Replacing the Bulb

Written By: Luke Baumann



INTRODUCTION

Refer to the lens replacement guide for direction on disassembly.



TOOLS:

- [Phillips #00 Screwdriver](#) (1)
 - [Anti-Static Project Tray](#) (1)
-

Step 1 — Battery



- 'Click' the battery door over to the side.

Step 2



- Open the battery door. Inside is the memory card and the battery.
- Click over the orange tab and take out the battery.
- Close the battery lid by pushing it down and sliding it back.

Step 3 — LCD Screen



- Remove the four screws located on bottom of camera. (.086in screws)

Step 4



- Remove the two screws, then remove the panel. (.113in screws)

Step 5



- Remove panel on right side (front view) by removing these two screws. (.196in screws)
- Remove single screw set underneath panel. (0.083in screw)

Step 6



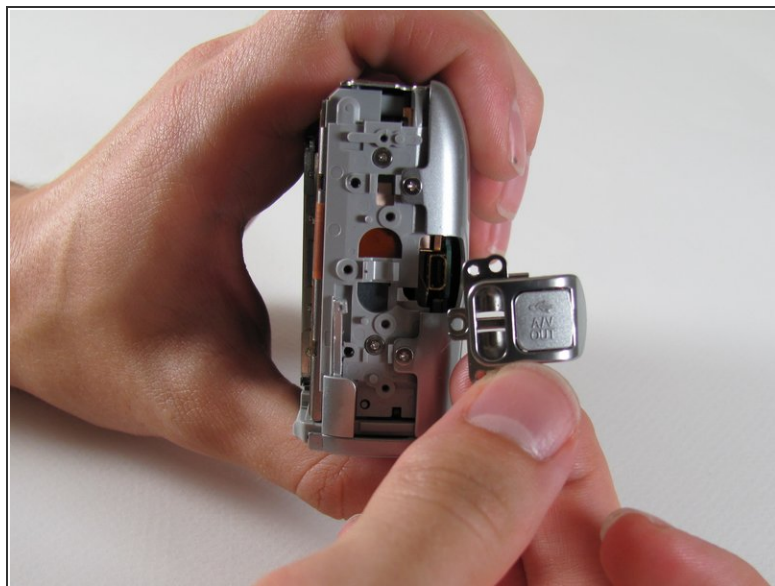
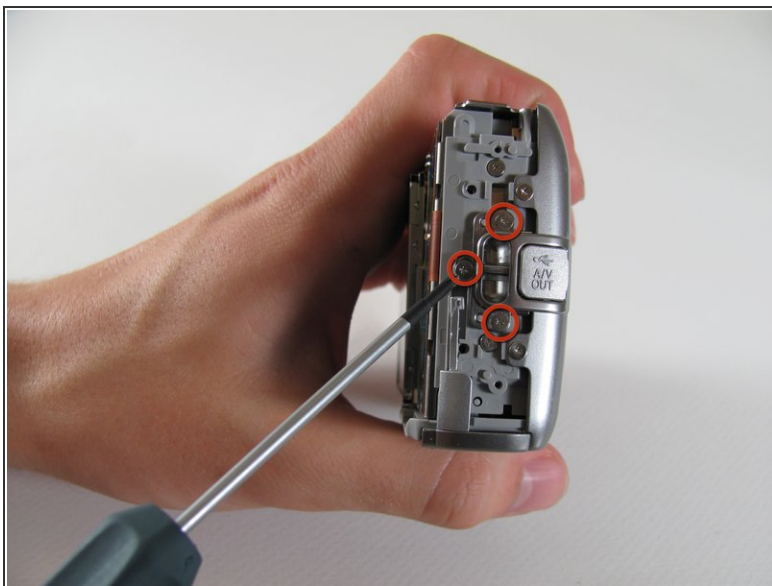
- Remove the two screws attaching the back panel to the body on the left side. (.188in screws)

Step 7



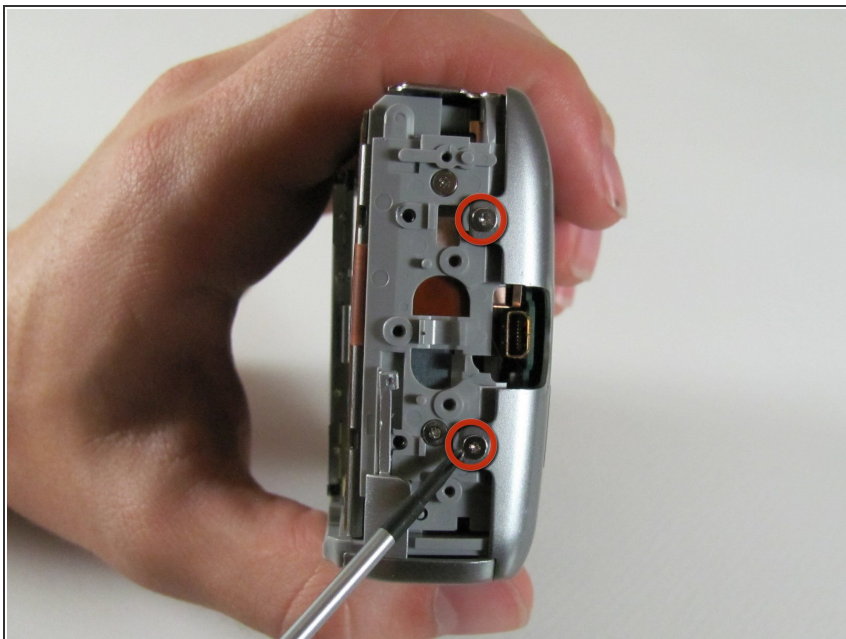
- Gently pull off back cover

Step 8



- Remove the two screws holding on the back panel. Then remove the three screws on the A/V Out tab (left side). (.188in screws)
- Remove tab.

Step 9



- Remove the two screws attaching the front panel to the body on the left side. (.18in screws)

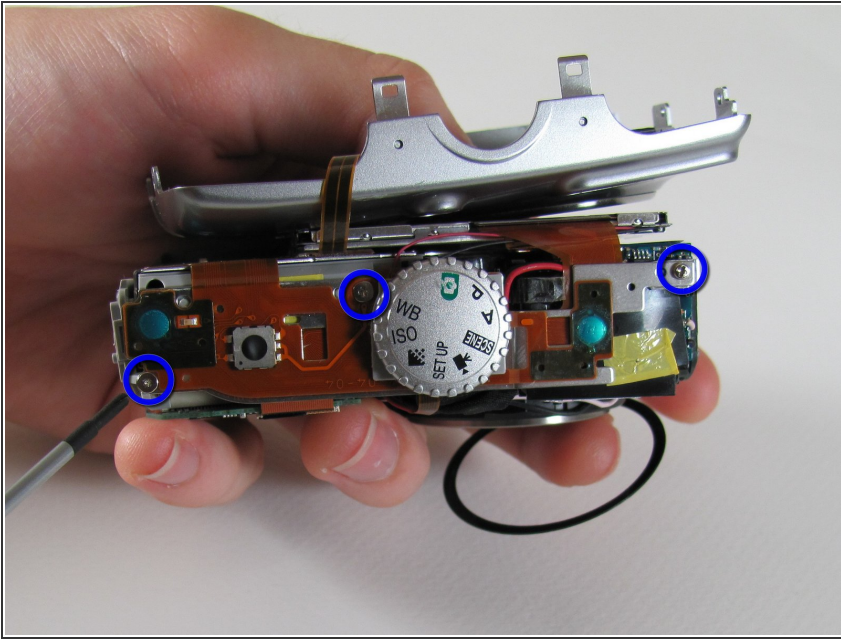
Step 10



- Flip up front panel.

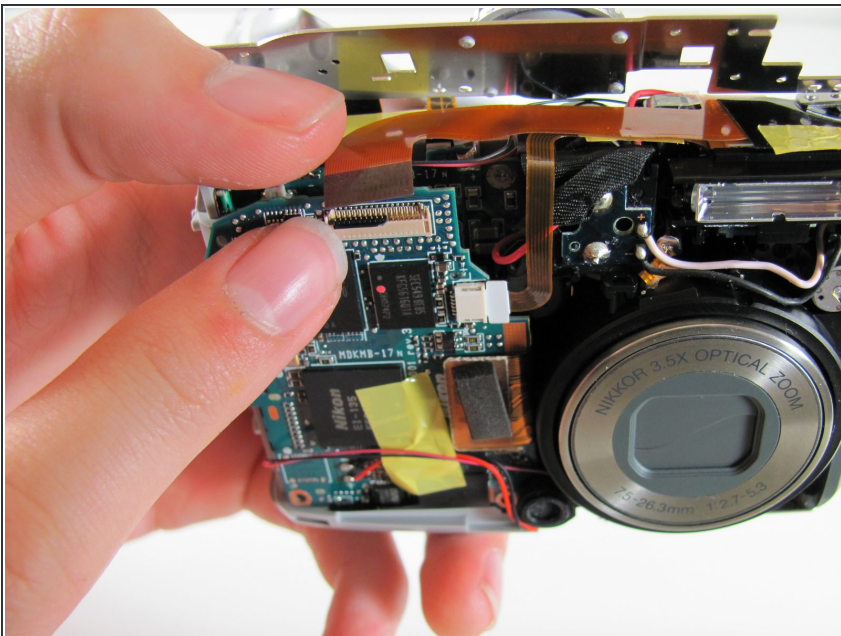
⚠ There should be wires still attaching the panel to body. DO NOT TRY TO PULL OFF COMPLETELY

Step 11



- Remove three screws as shown. (Right screw:0.084in, Left screw:0.088in, Middle screw:0.114in)

Step 12



- Carefully pull orange LCD connector up and out of the port.

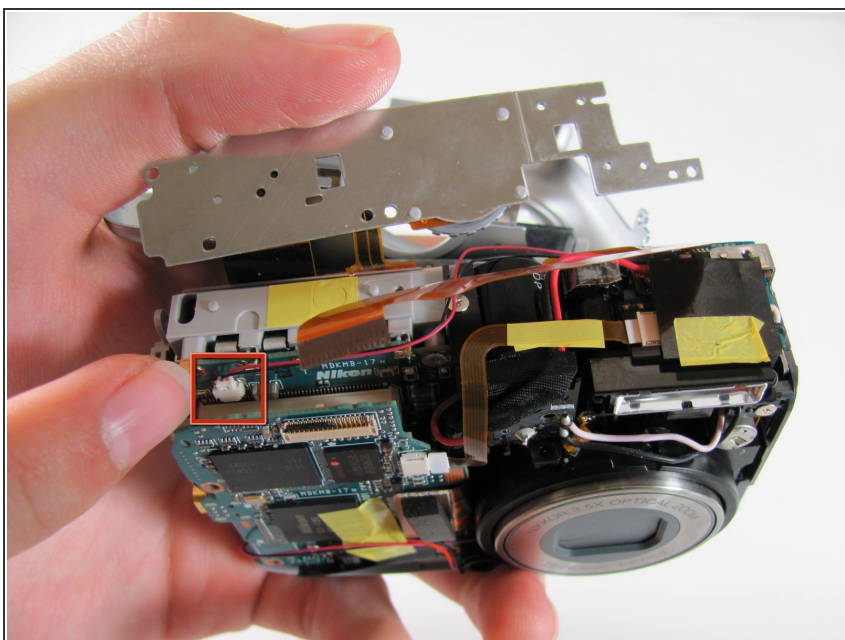
⚠ Be careful to pull vertically while pushing the black tab upwards

Step 13



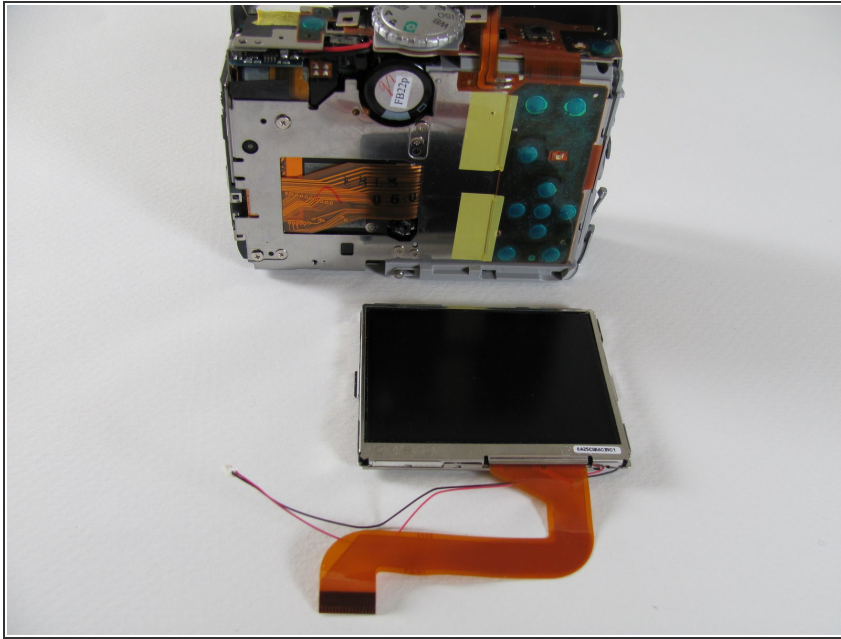
- Remove the screw below the LCD (.124in)

Step 14



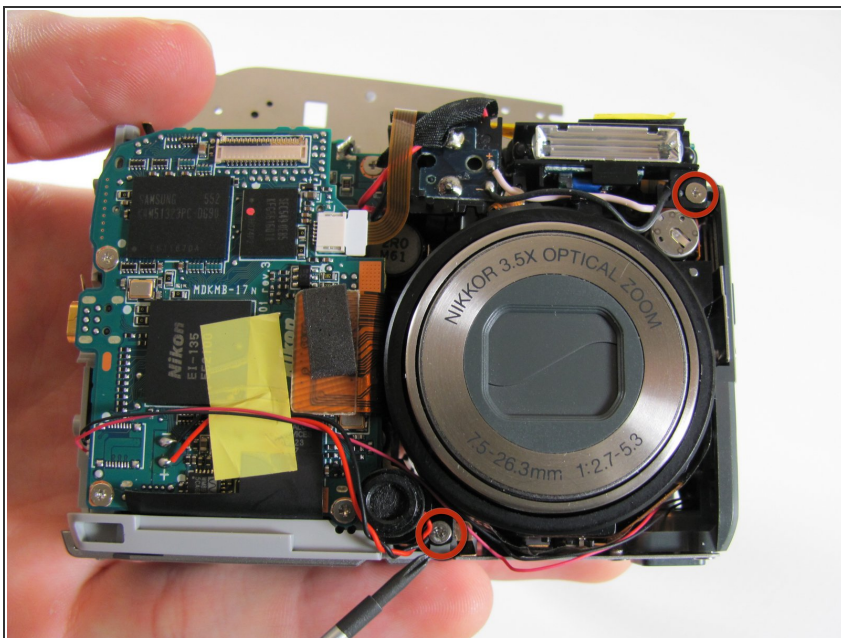
- Carefully pull out the plug connecting the LCD to the motherboard.

Step 15



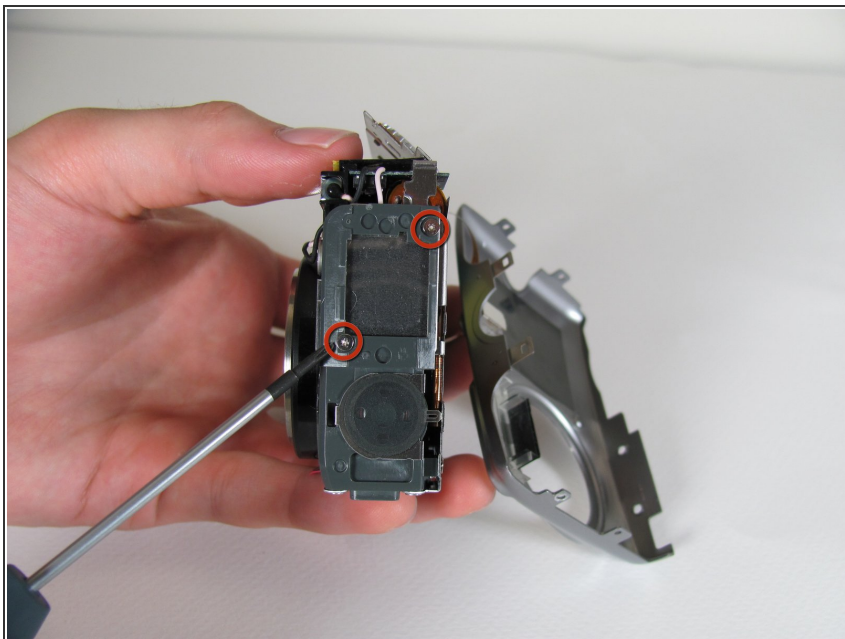
- You can now remove the LCD from the camera body.
- Insert new LCD and reassemble using the steps in reverse order.

Step 16 — Motherboard



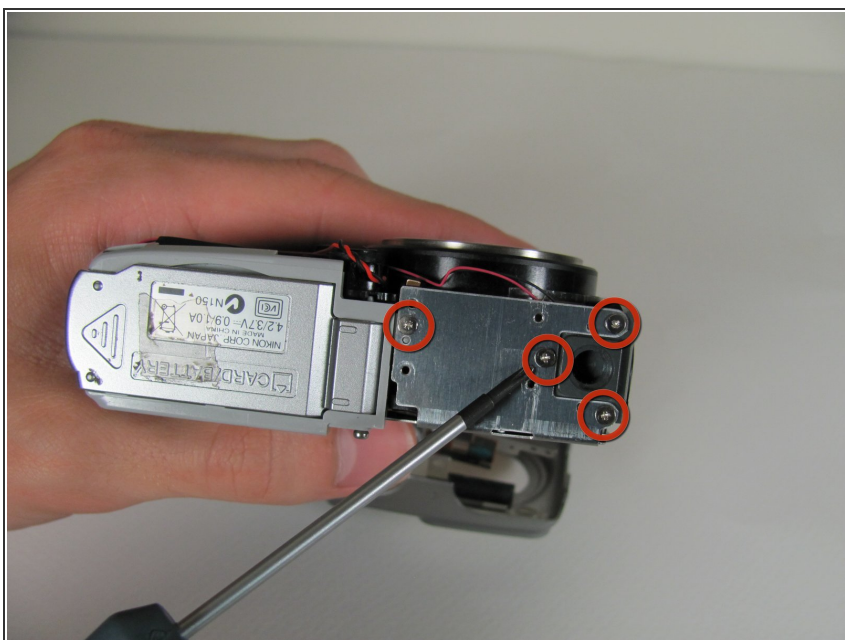
- Remove the screw to the right of the flash.
- Remove the screw to the right of the microphone on the bottom. (0.124in)

Step 17



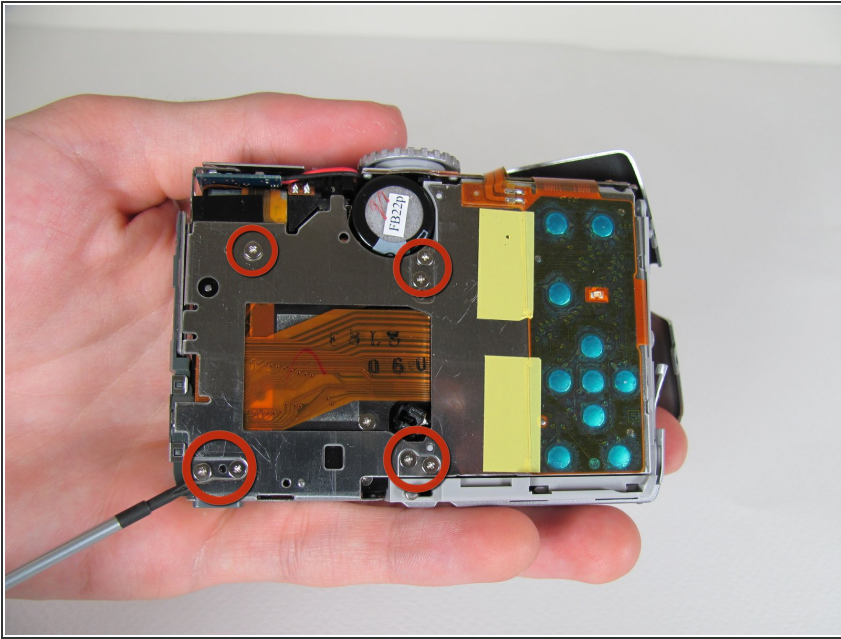
- Remove the two screws on the right side of the camera. (0.115 in screws)

Step 18



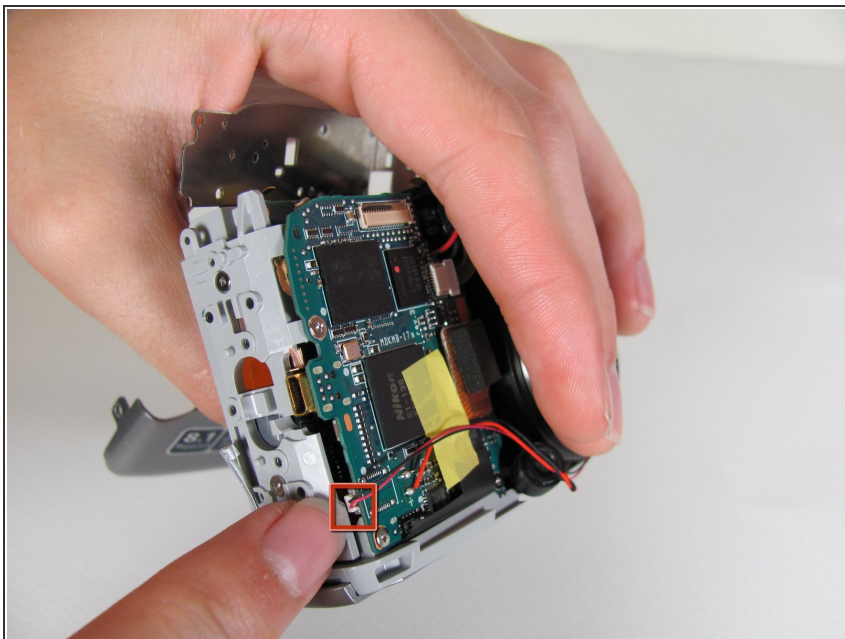
- Remove the four bottom screws.
(0.116(fat head)-center screw,
0.112(skinny head)-other screws)

Step 19



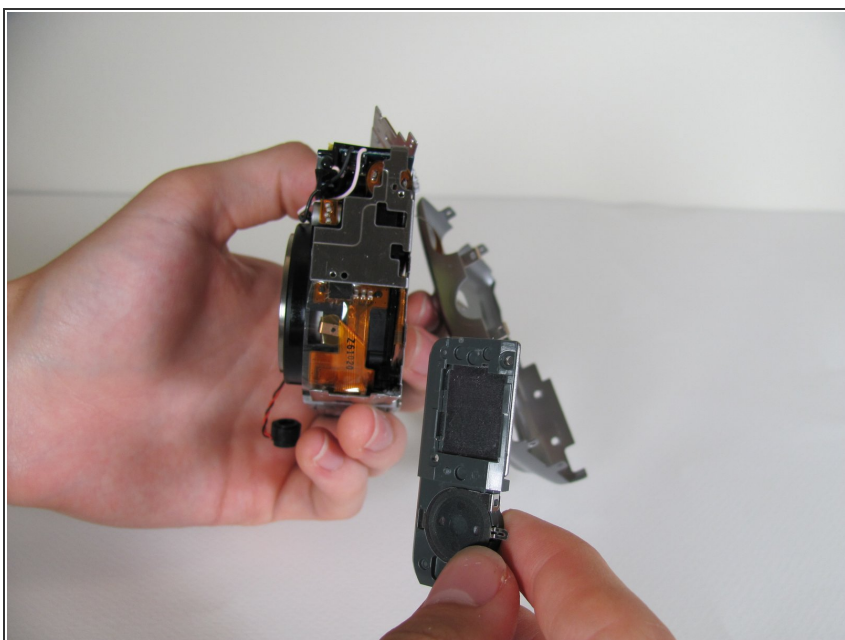
- Remove the 7 screws from the back of the camera. (0.111 in screws)

Step 20



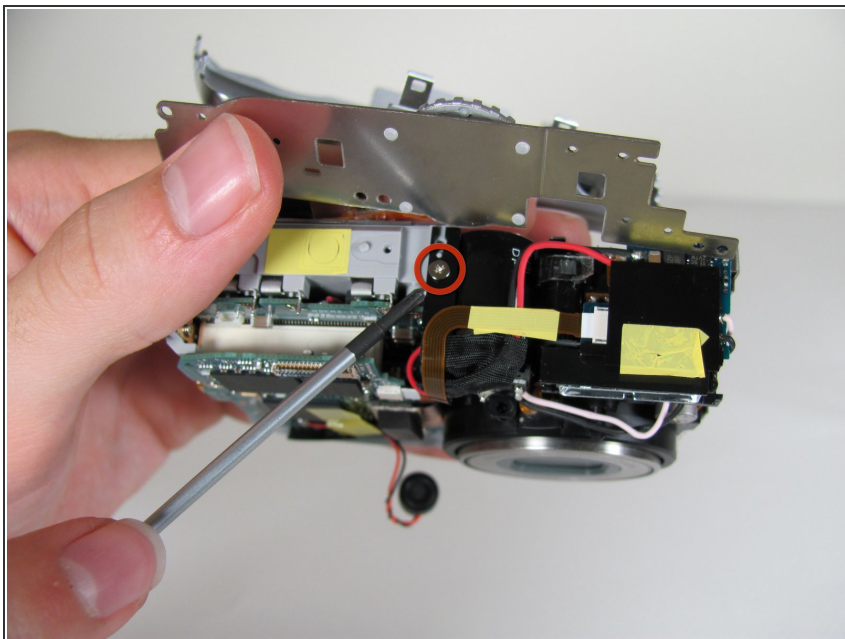
- Remove the plug that connects the lens to the left side of the motherboard by firmly grasping the base of the plug and pulling gently sideways away from the camera.

Step 21



- Remove the right panel.

Step 22



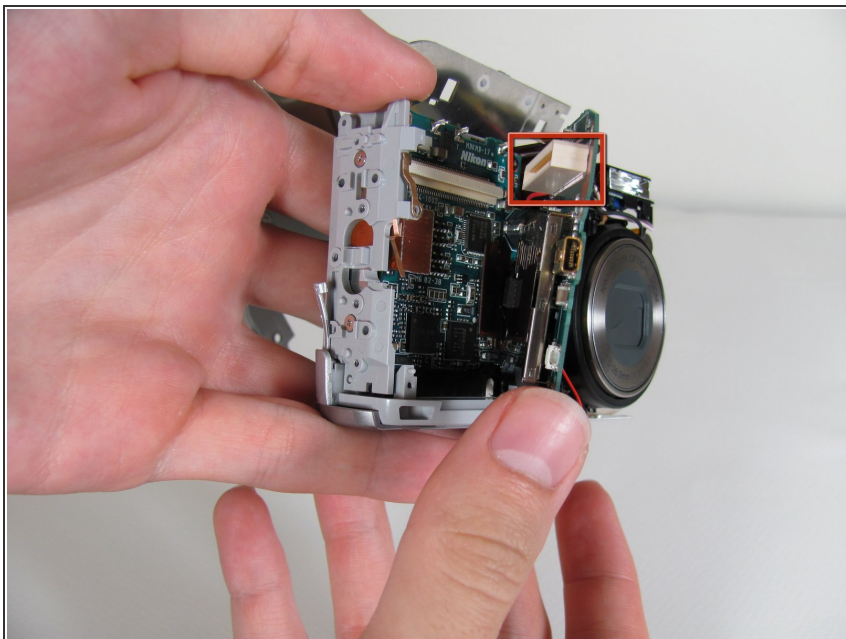
- Remove the screw from the top of the camera. (0.112 in screws)

Step 23



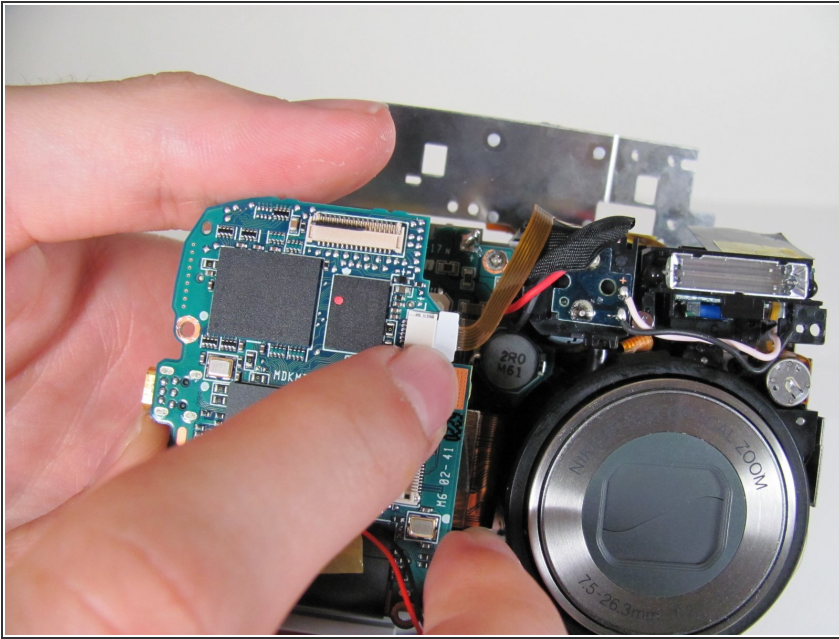
- Remove the three screws from the motherboard. (0.112 in screws)
- Detach the orange tab with the foam on top. It will click out of place.

Step 24




- Remove the motherboard by pulling it up, out of the port.

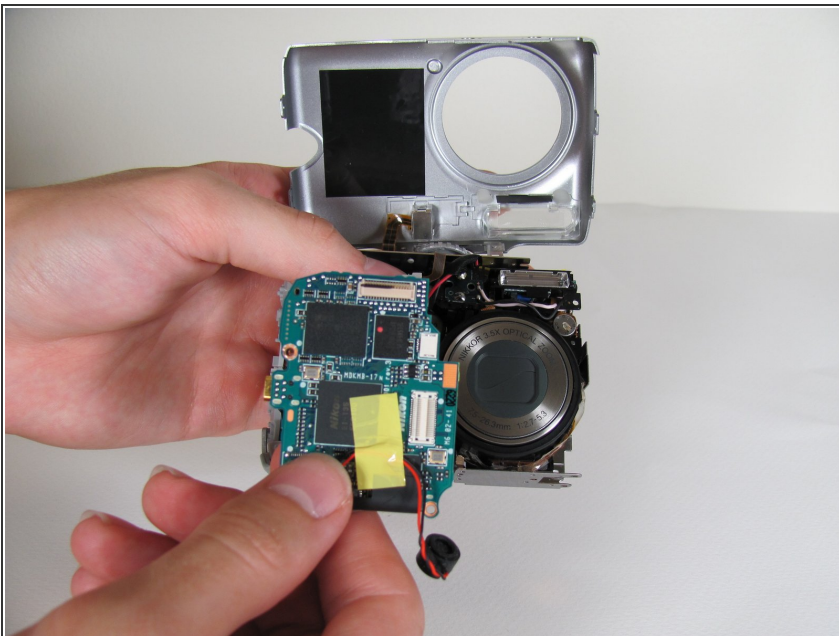
Step 25



- Carefully remove the tab that connects the flash to the motherboard from the port by gently pulling connector to the right, out of its port.

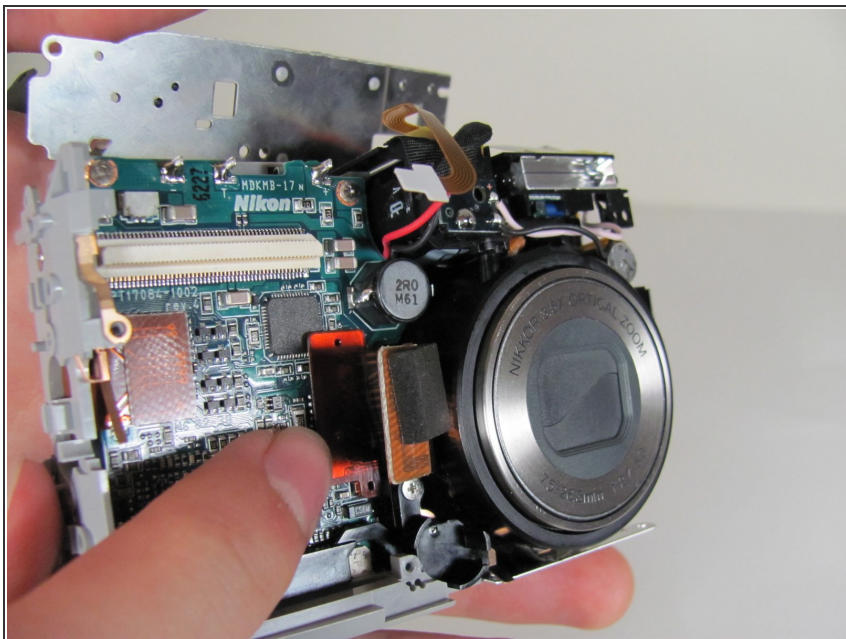
 Be careful when removing the connector.

Step 26



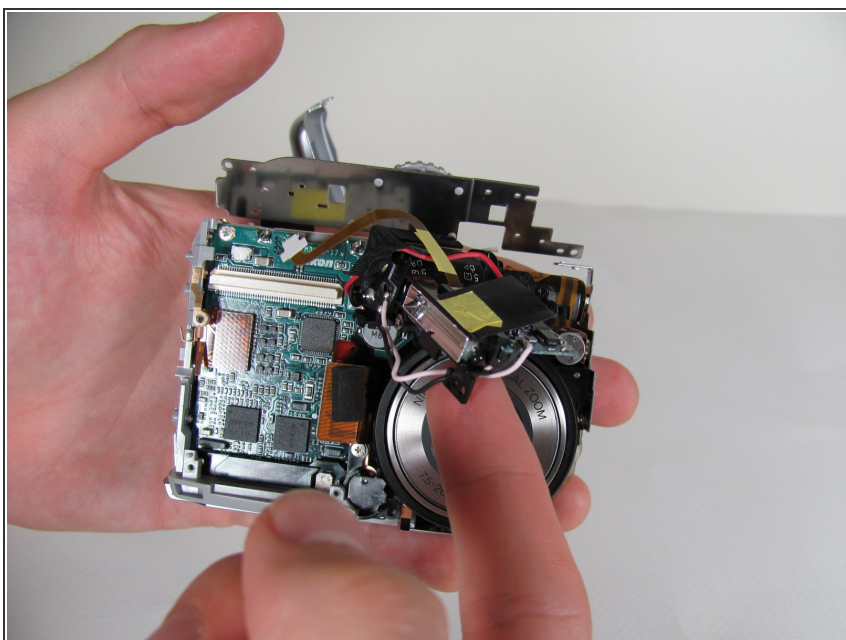
- Remove the motherboard from camera body.
- Replace with a new motherboard and follow the steps in reverse order to reassemble.

Step 27 — Lens



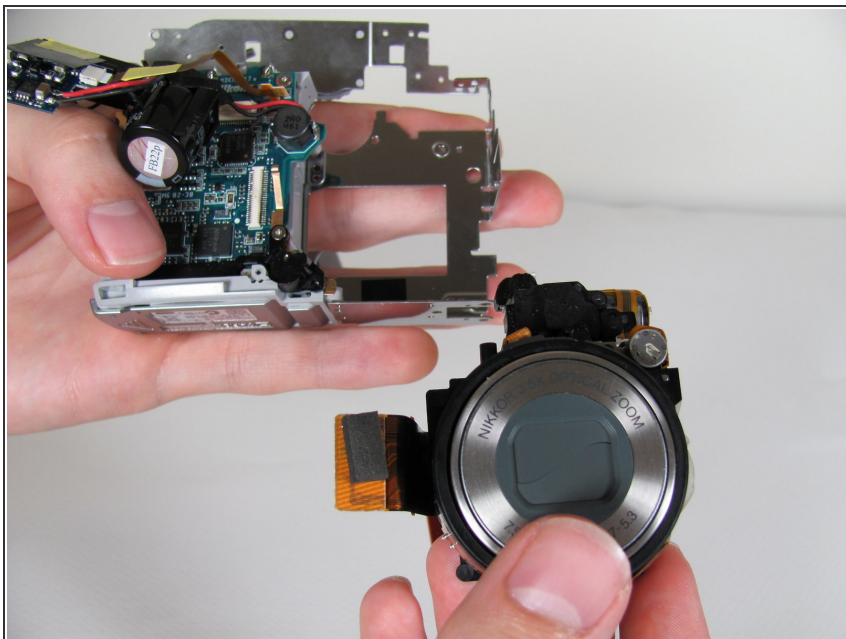
- Remove the orange plug by carefully pulling it out. It snaps in and out of place.

Step 28



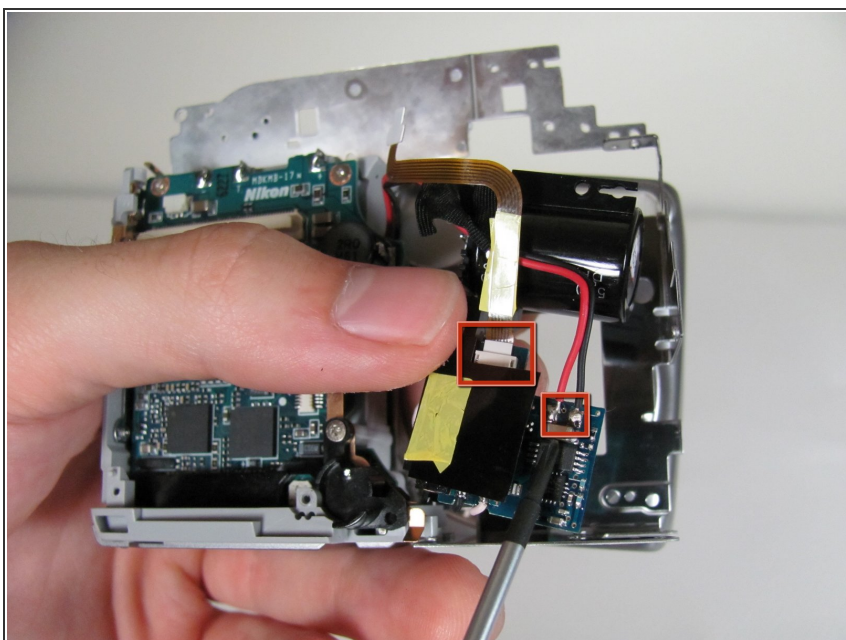
- Remove flash unit from it's place in the camera.
- ⓘ The flash unit is still attached to the camera.

Step 29



- Remove the lens from the camera.

Step 30 — Flash Bulb



- Remove the tab connecting the flash to the motherboard by gently pulling the connector sideways out of its port, away from flash unit.
- Unsolder red and black wires.
- Remove the flash unit.

To reassemble your device, follow these instructions in reverse order.