



Nikon Coolpix P4 LCD Screen Replacement

Replace the LCD Screen

Written By: Luke Baumann



INTRODUCTION

This guide will walk you through the steps to replace the LCD screen for your camera.



TOOLS:

- [Phillips #00 Screwdriver](#) (1)
 - [Anti-Static Project Tray](#) (1)
-

Step 1 — Battery



- 'Click' the battery door over to the side.

Step 2



- Open the battery door. Inside is the memory card and the battery.
- Click over the orange tab and take out the battery.
- Close the battery lid by pushing it down and sliding it back.

Step 3 — LCD Screen



- Remove the four screws located on bottom of camera. (.086in screws)

Step 4



- Remove the two screws, then remove the panel. (.113in screws)

Step 5



- Remove panel on right side (front view) by removing these two screws. (.196in screws)
- Remove single screw set underneath panel. (0.083in screw)

Step 6



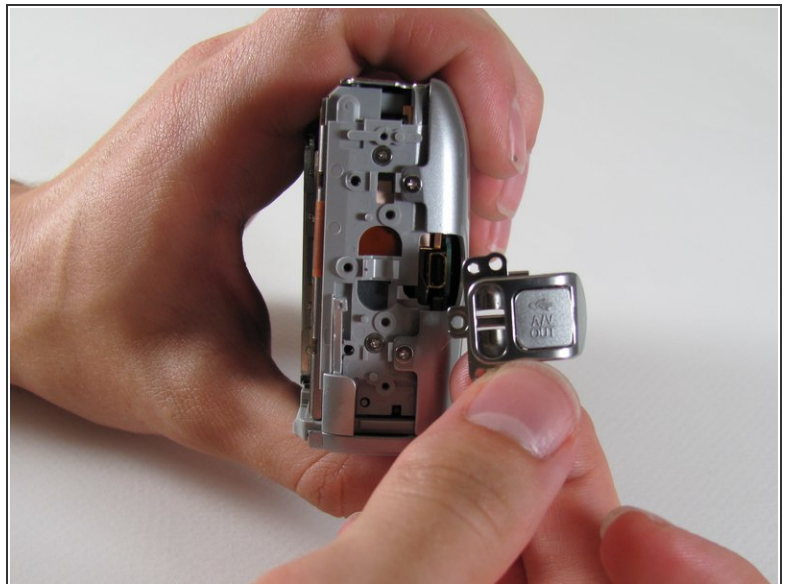
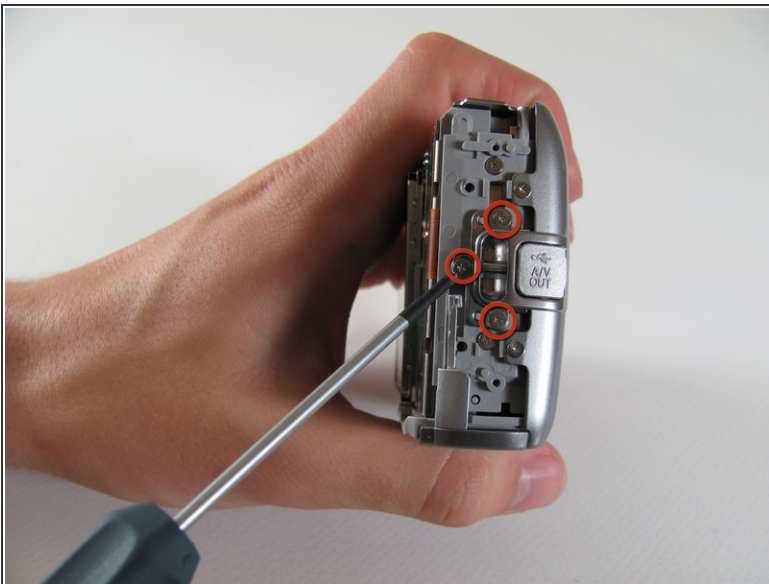
- Remove the two screws attaching the back panel to the body on the left side. (.188in screws)

Step 7



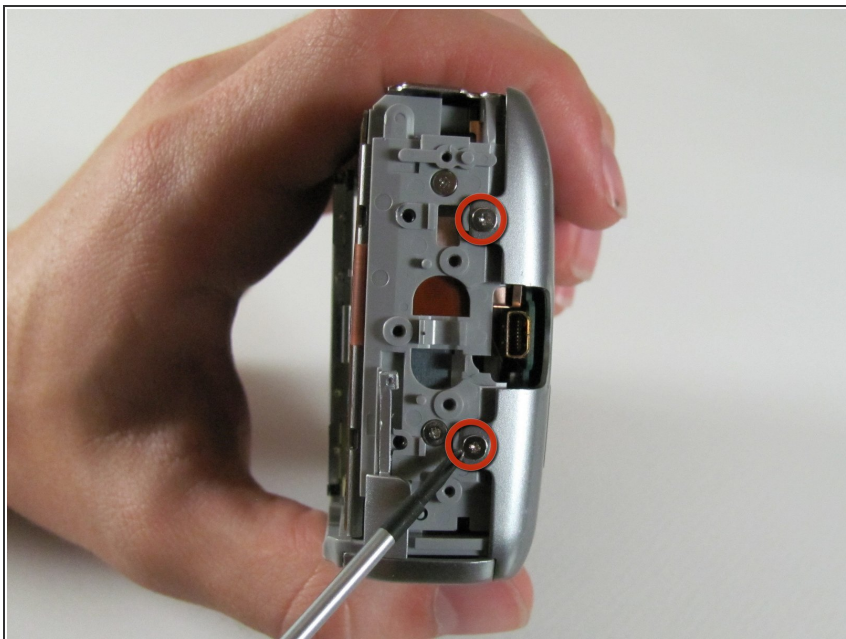
- Gently pull off back cover

Step 8



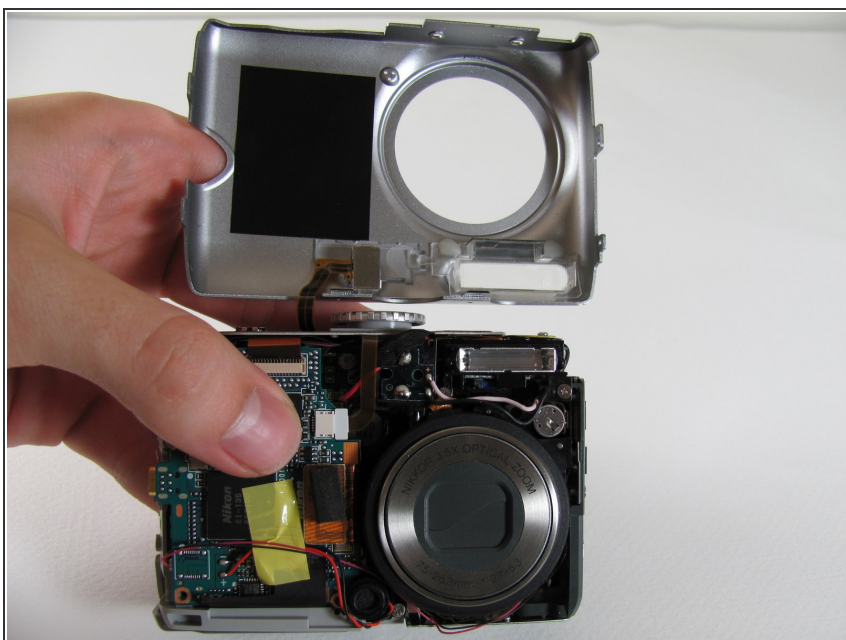
- Remove the two screws holding on the back panel. Then remove the three screws on the A/V Out tab (left side). (.188in screws)
- Remove tab.

Step 9



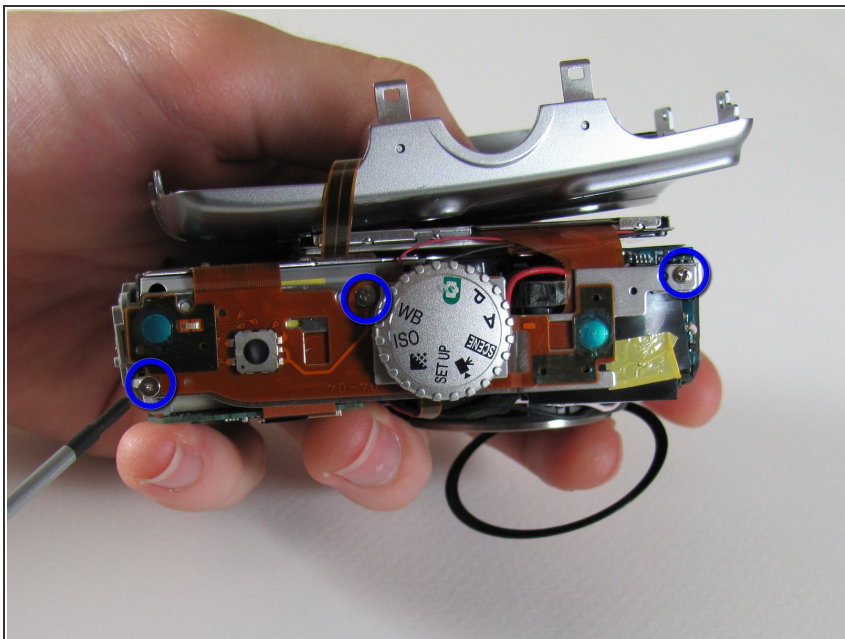
- Remove the two screws attaching the front panel to the body on the left side. (.18in screws)

Step 10



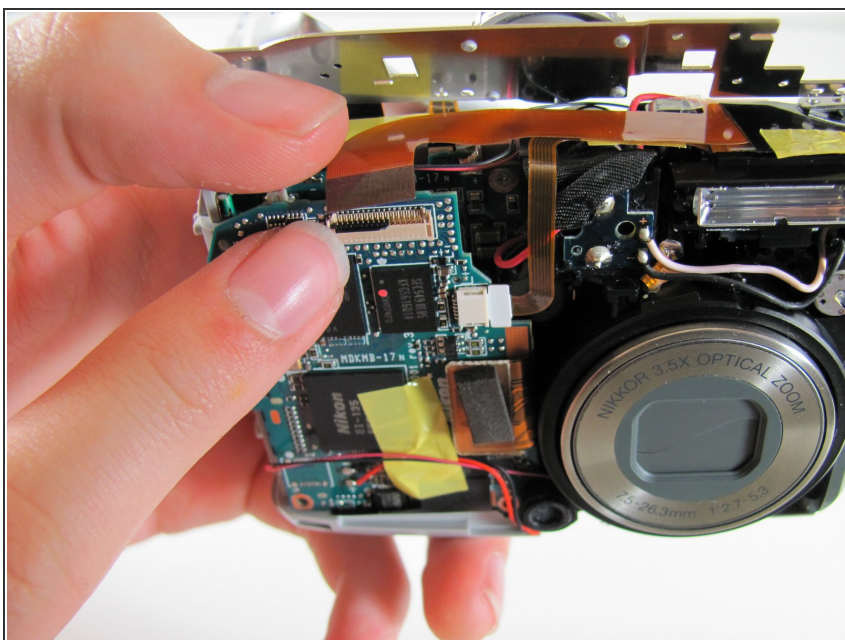
- Flip up front panel.
- ⚠ There should be wires still attaching the panel to body. DO NOT TRY TO PULL OFF COMPLETELY

Step 11



- Remove three screws as shown.
(Right screw:0.084in, Left screw:0.088in, Middle screw:0.114in)

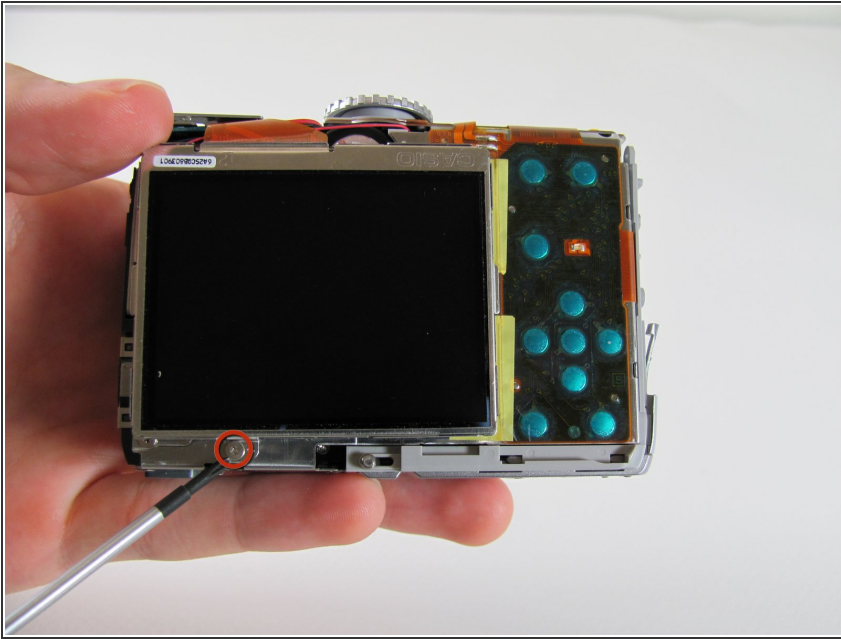
Step 12



- Carefully pull orange LCD connector up and out of the port.

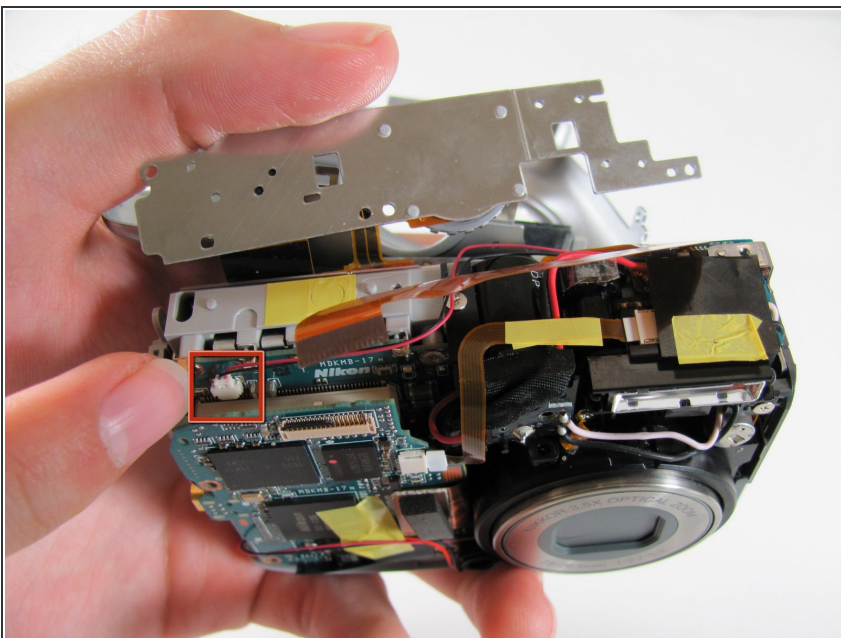
⚠ Be careful to pull vertically while pushing the black tab upwards

Step 13



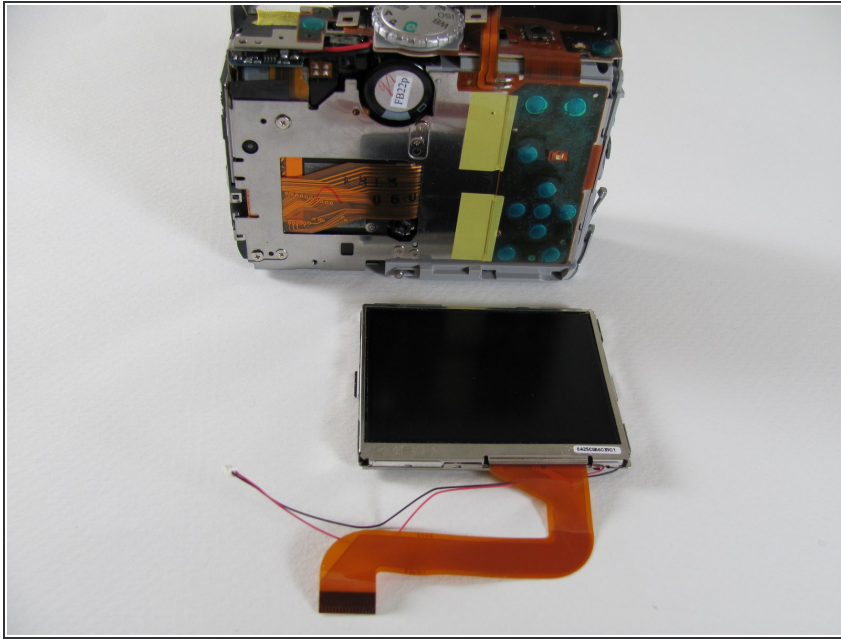
- Remove the screw below the LCD (.124in)

Step 14



- Carefully pull out the plug connecting the LCD to the motherboard.

Step 15



- You can now remove the LCD from the camera body.
- Insert new LCD and reassemble using the steps in reverse order.

To reassemble your device, follow these instructions in reverse order.