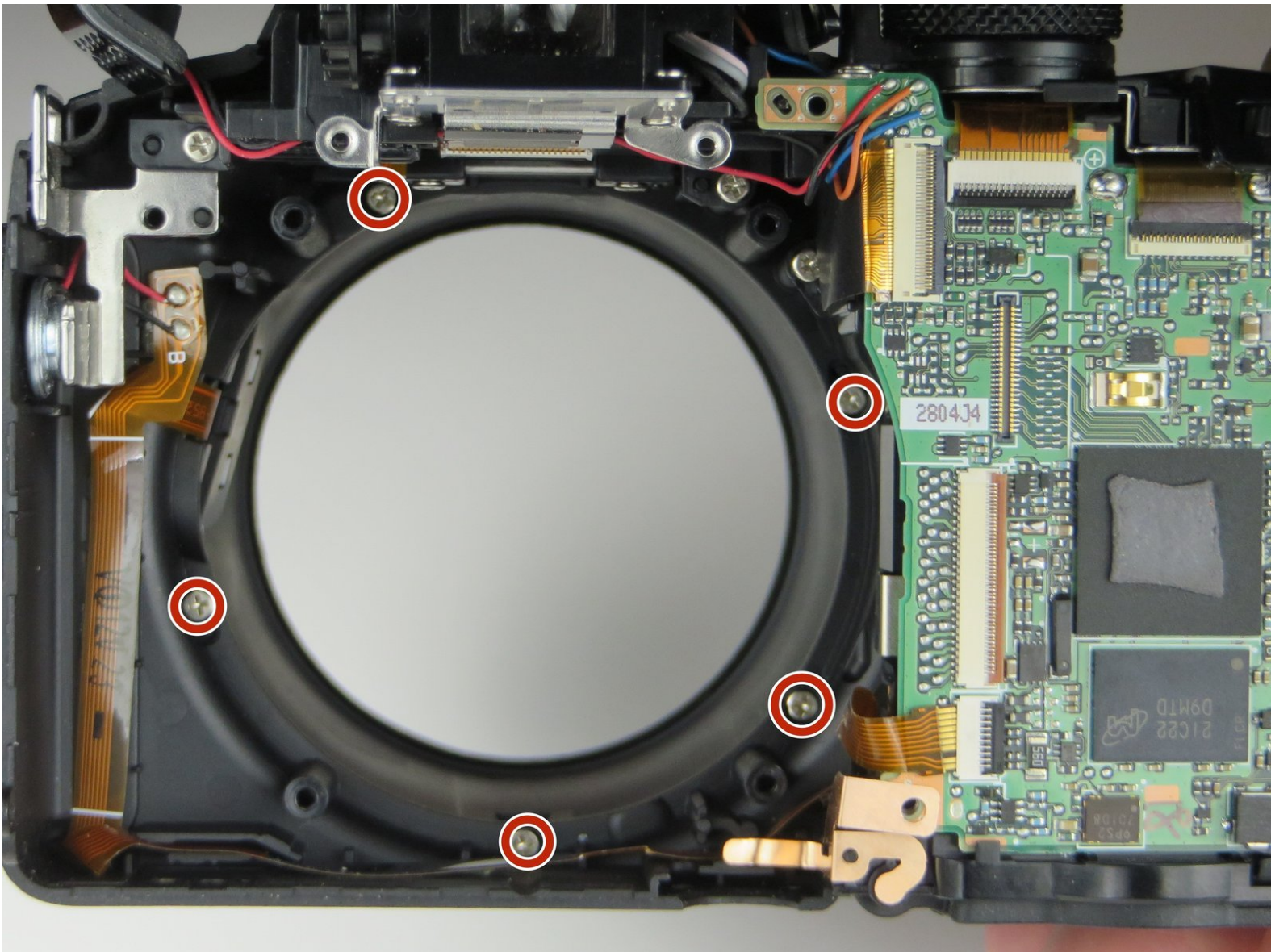




Nikon Coolpix P510 Lens Casing Replacement

This guide helps you replace the outer lens casing if it has been cracked or damaged.

Written By: Brian Hulsey



INTRODUCTION

This guide uses the lens assembly guide to get the camera apart. Once you have finished with the lens assembly, getting to the casing is fairly easy.

TOOLS:

- [Phillips #000 Screwdriver](#) (1)
 - [iFixit Opening Tools](#) (1)
 - [Phillips #00 Screwdriver](#) (1)
-

Step 1 — Lens Assembly



- Flip the camera upside down and remove six 3mm PH00 Philips screws with a Philips screwdriver.
- On the thumb grip, remove the one 4mm PH00 Philips screw.

Step 2



- With the camera upside down, remove the three 3mm PH00 Philips screws on the left side.
- ❗ One of the screws are under the HDMI and A/V Out cover.

Step 3



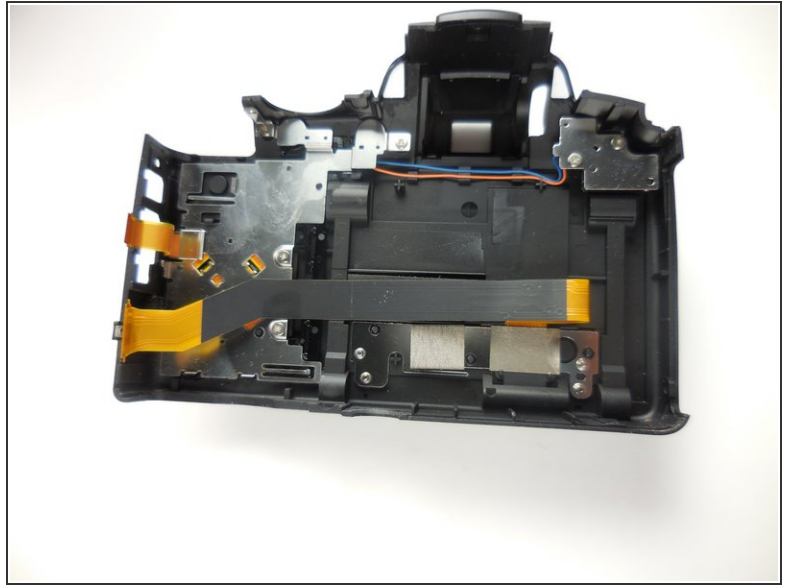
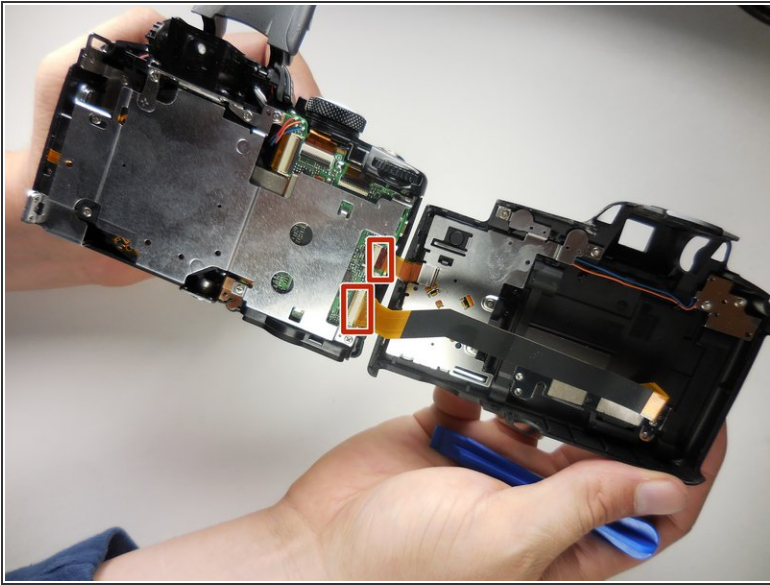
- On the opposite side of the camera, remove the two 3mm PH00 Philips screws.

Step 4



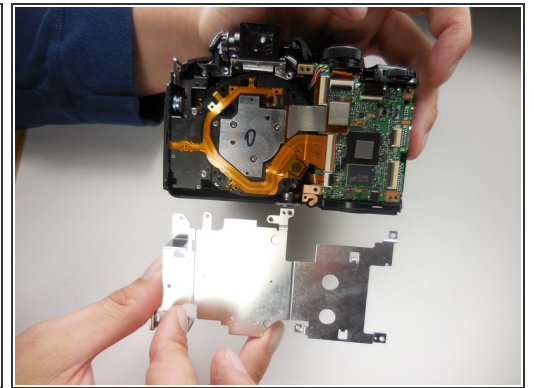
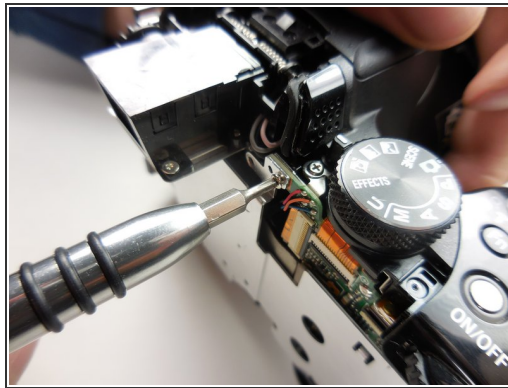
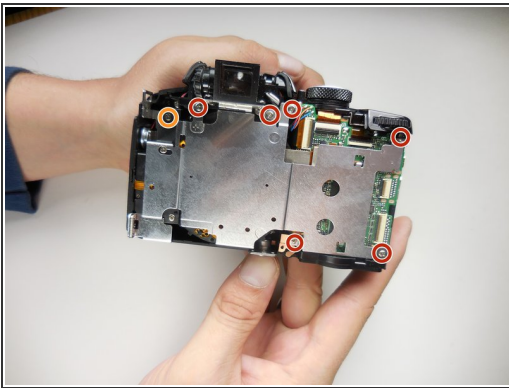
- Open the flash and use a plastic opening tool to pop the tab under it as shown.
- Now pull the casing apart.
- The tripod attachment may fall out on its own, or you will need to pull it out.

Step 5



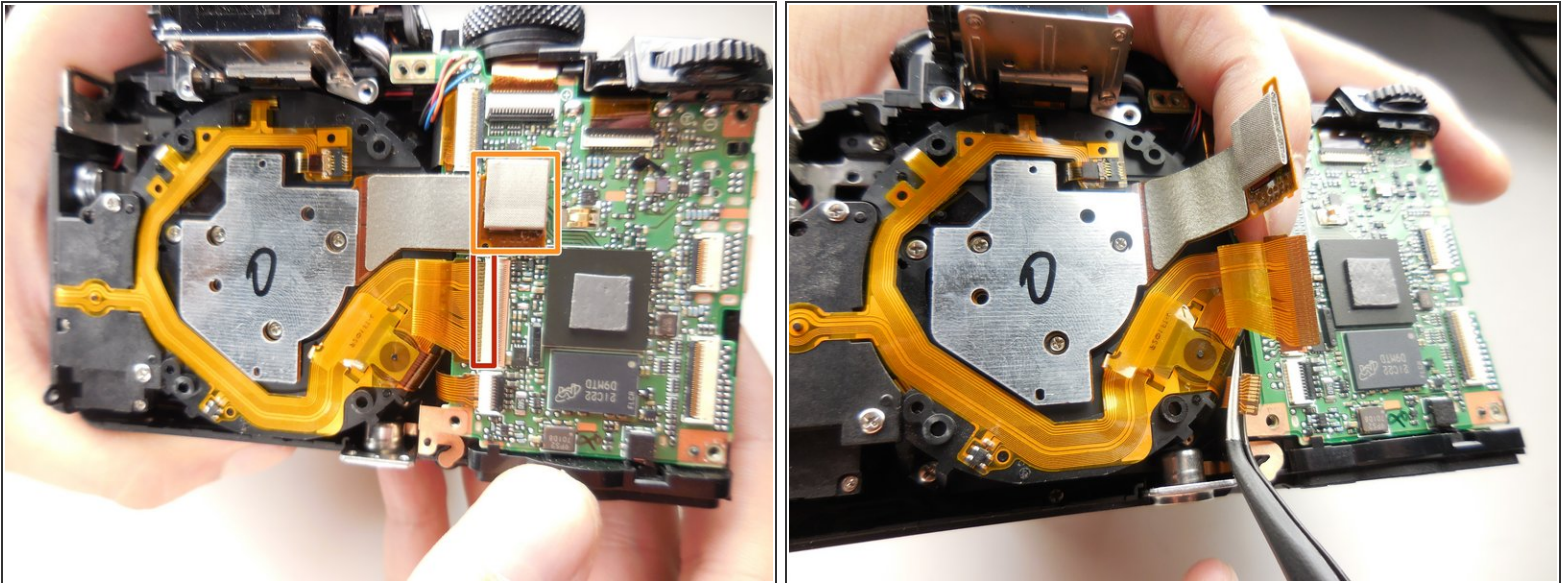
- Unplug the two ribbon cables to completely detach the back.

Step 6



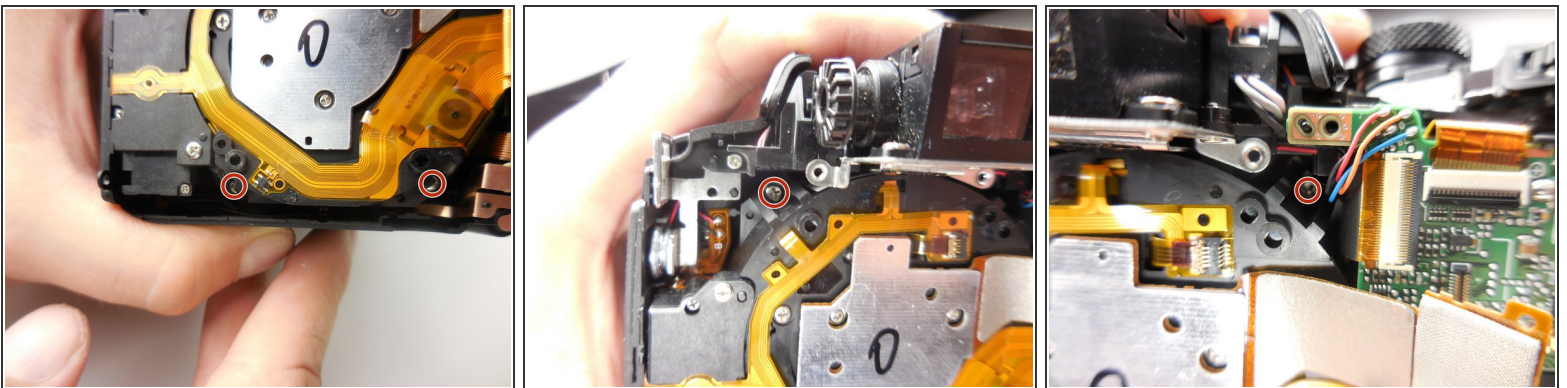
- With the back separated, you need to remove six 3mm PH000 Philips screws with a Philips screwdriver.
- Remove one 5mm PH00 Philips screw
- ⓘ To remove the top right corner screw, you may need to lift the corner of the case to gain access to it.
- With all the screws out, the metal plate should simply lift off.

Step 7



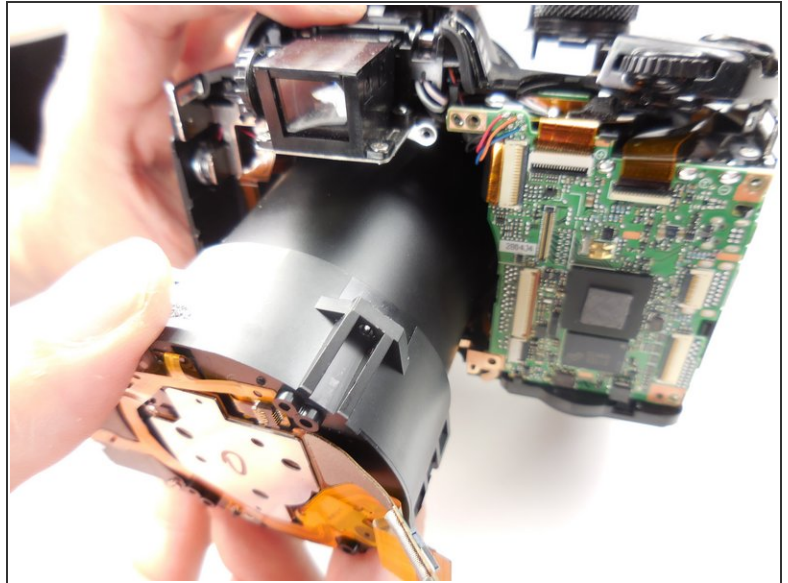
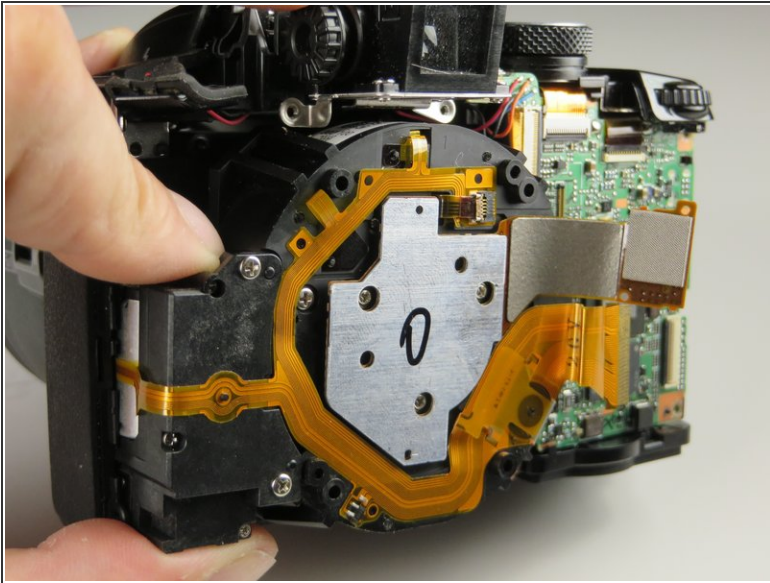
- With the metal plate off, unplug this ribbon cable from the motherboard.
- To remove the flat-topped connector, you simply lift it up to unplug it.

Step 8



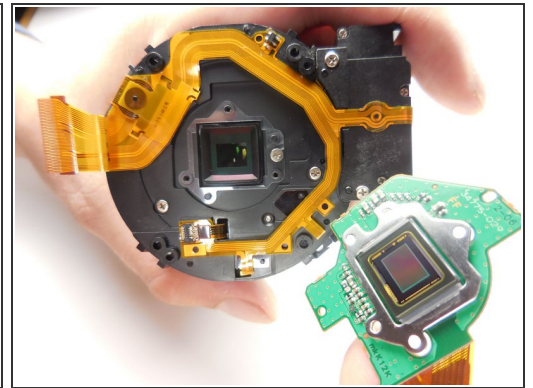
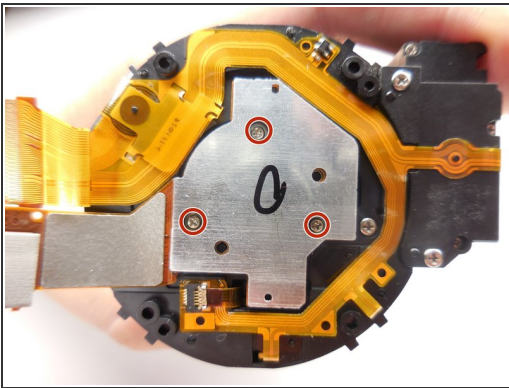
- To get the lens assembly out, you need to remove four 6mm PH00 Philips screws

Step 9



- With the support screws out, you can simply slide the assembly out of the casing.

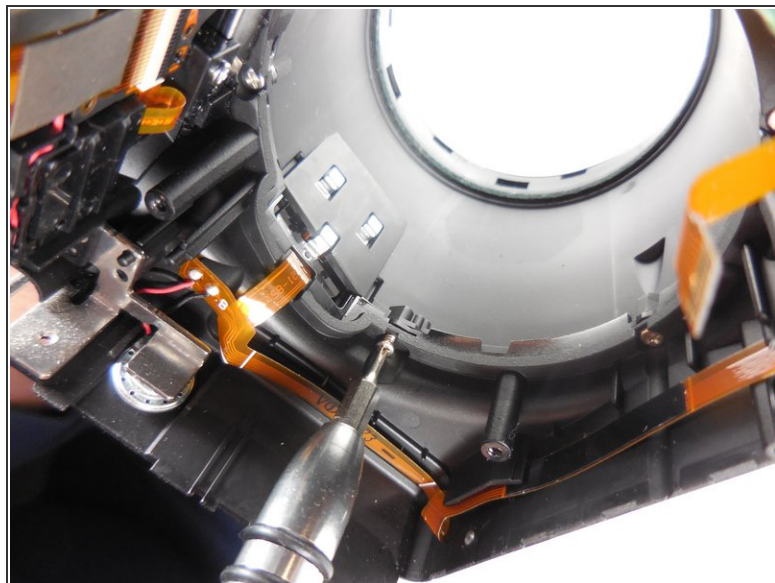
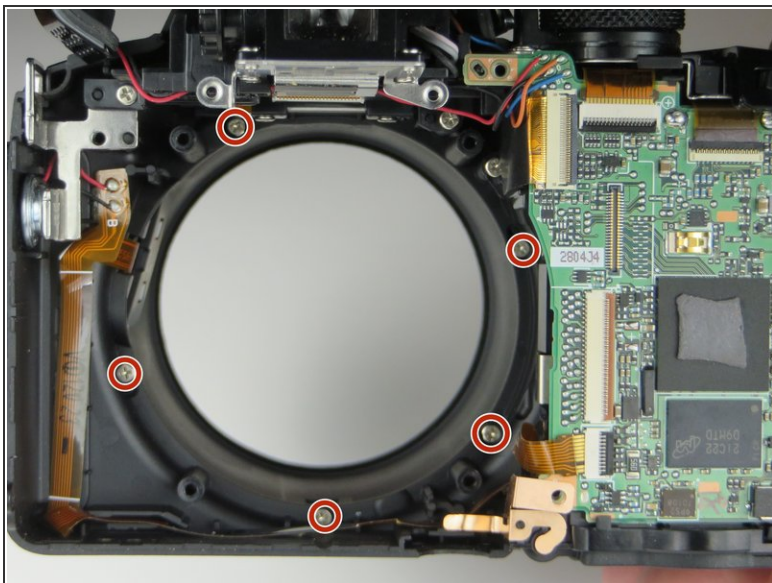
Step 10



- ☑ If you are moving on to take the lens casing off, you do not need to do this step.

- With the assembly out we need to take of this last piece by removing the three 3mm PH000 Philips screws.

Step 11 — Lens Casing



- Remove five PH00 Philips screws with a Philips screwdriver.

Step 12



- Separate the lens casing from the front.
- ⓘ The switch on the side simply slides off of the front casing.

To reassemble your device, follow these instructions in reverse order.