



Nikon Coolpix P510 Motherboard Replacement

This guide shows the reader how to take apart the camera to get to the motherboard to repair it.

Written By: Brian Hulsey



INTRODUCTION

This guide will take some time and is very hard to do. Once the camera is apart you have to unsolder several wires and post on the motherboard to get it off. Putting it back together will be even more of a challenge, as it uses micro soldering to reconnect the wires. Only experienced solders should do this.



TOOLS:

- [Phillips #00 Screwdriver](#) (1)
 - [Portable Soldering Iron](#) (1)
 - [iFixit Opening Tools](#) (1)
-

Step 1 — Battery Removal



- Flip the camera over and push the tab on the battery cover to open the battery compartment.

Step 2



- Push the little yellow tab to allow the battery to slide out.
- With the tab pushed out, pull the battery out.

Step 3 — Lens Assembly



- Flip the camera upside down and remove six 3mm PH00 Philips screws with a Philips screwdriver.
- On the thumb grip, remove the one 4mm PH00 Philips screw.

Step 4



- With the camera upside down, remove the three 3mm PH00 Philips screws on the left side.
- ⓘ One of the screws are under the HDMI and A/V Out cover.

Step 5



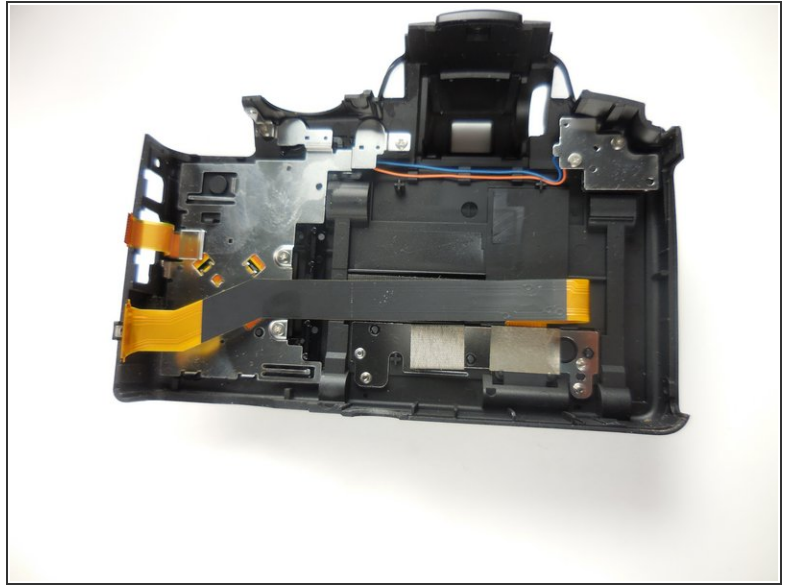
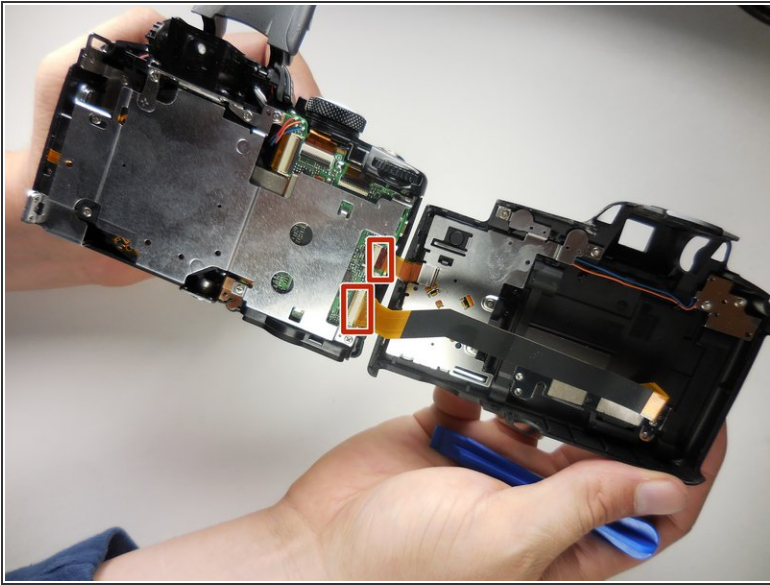
- On the opposite side of the camera, remove the two 3mm PH00 Philips screws.

Step 6



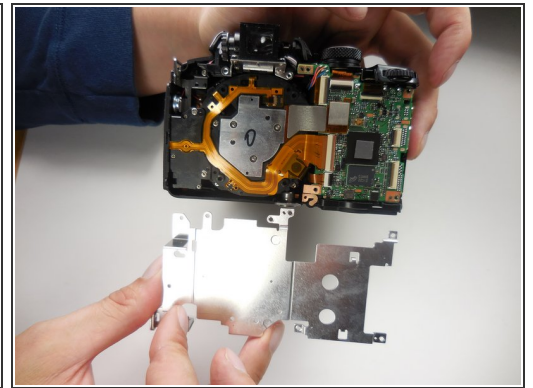
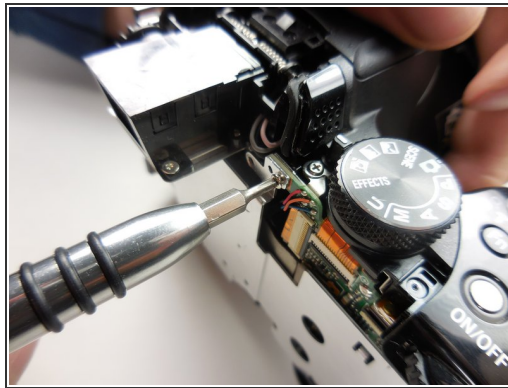
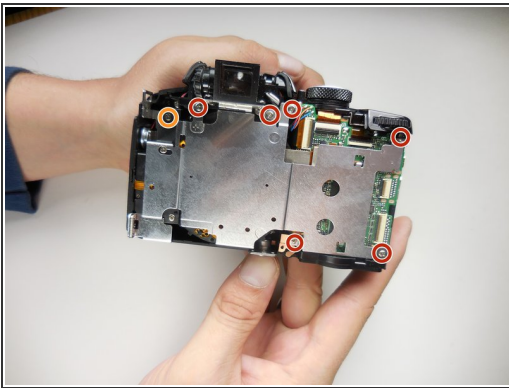
- Open the flash and use a plastic opening tool to pop the tab under it as shown.
- Now pull the casing apart.
- The tripod attachment may fall out on its own, or you will need to pull it out.

Step 7



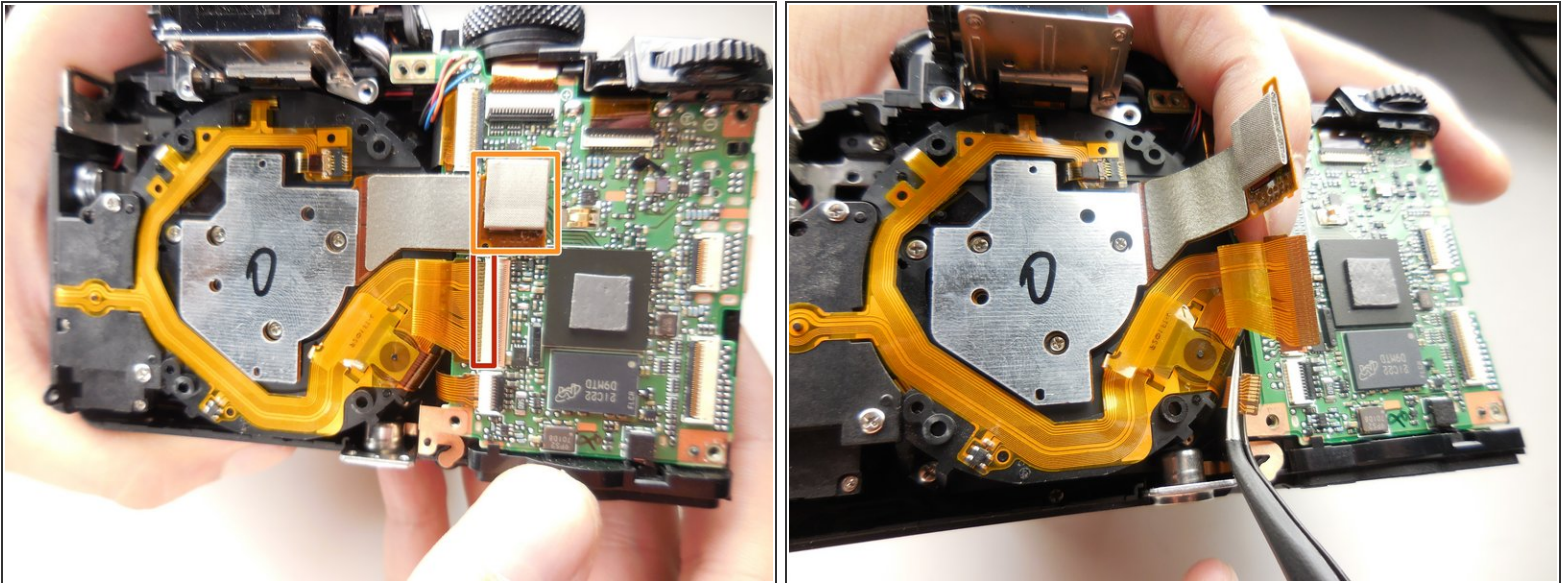
- Unplug the two ribbon cables to completely detach the back.

Step 8



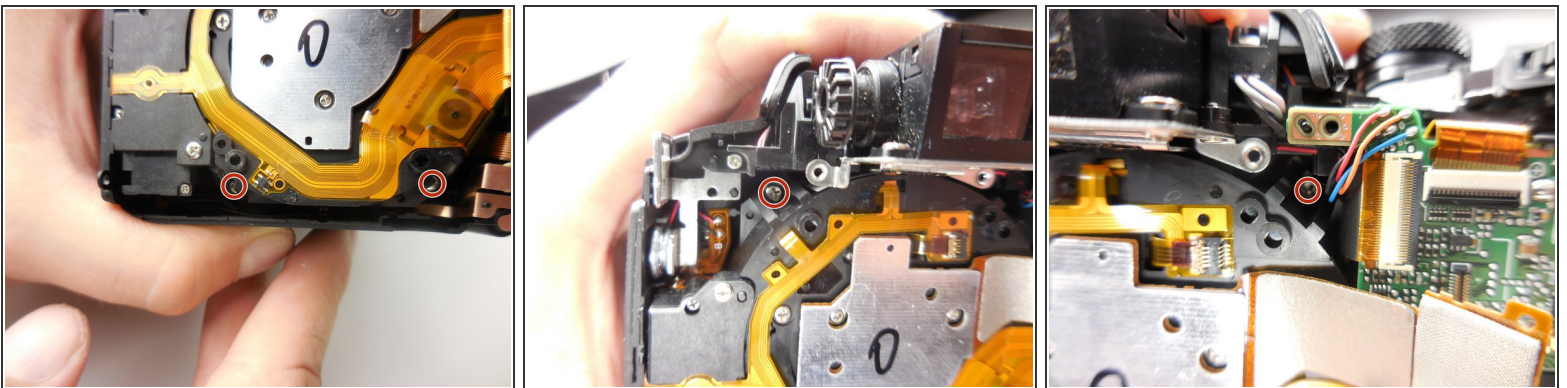
- With the back separated, you need to remove six 3mm PH000 Philips screws with a Philips screwdriver.
- Remove one 5mm PH00 Philips screw
- ⓘ To remove the top right corner screw, you may need to lift the corner of the case to gain access to it.
- With all the screws out, the metal plate should simply lift off.

Step 9



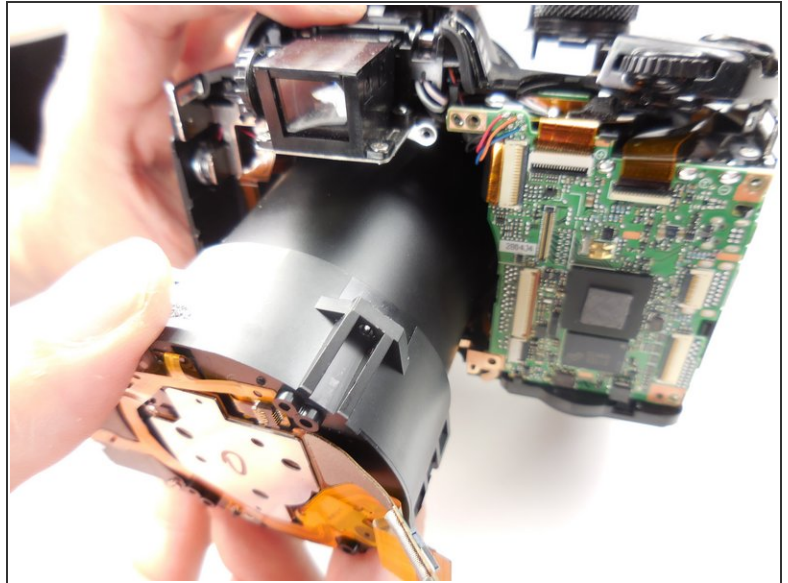
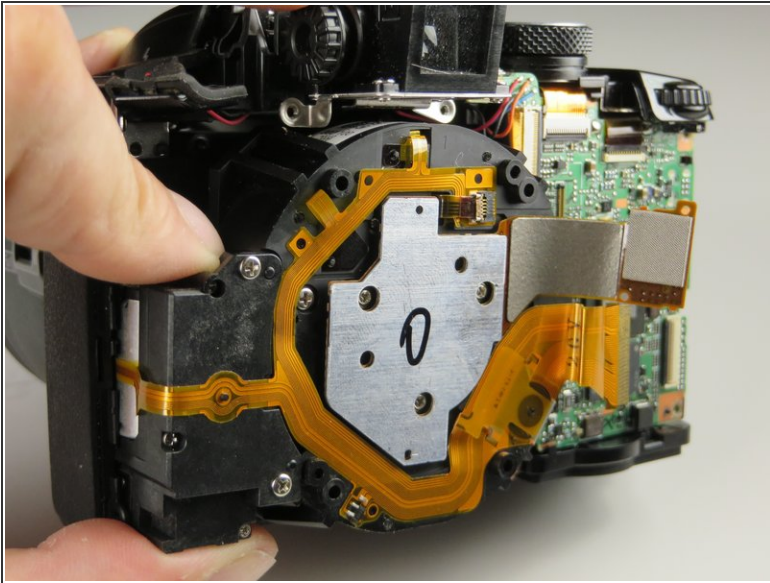
- With the metal plate off, unplug this ribbon cable from the motherboard.
- To remove the flat-topped connector, you simply lift it up to unplug it.

Step 10



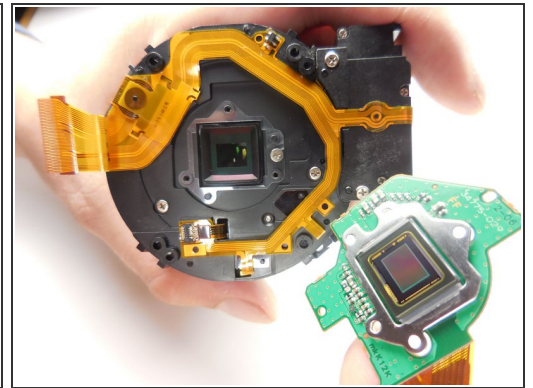
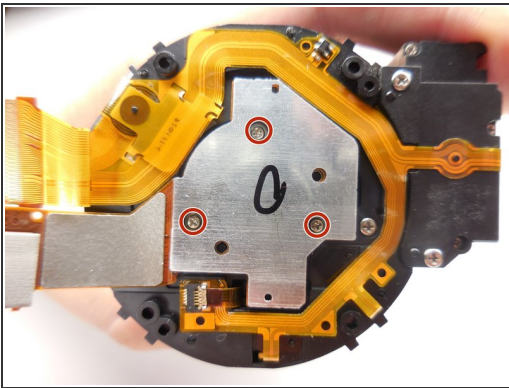
- To get the lens assembly out, you need to remove four 6mm PH00 Philips screws

Step 11



- With the support screws out, you can simply slide the assembly out of the casing.

Step 12



- ☞ If you are moving on to take the lens casing off, you do not need to do this step.

- With the assembly out we need to take of this last piece by removing the three 3mm PH000 Philips screws.

Step 13 — Motherboard



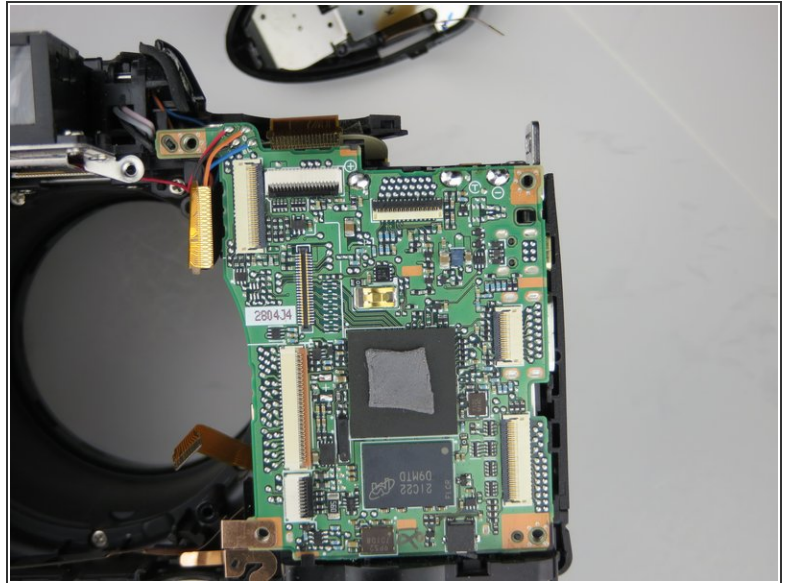
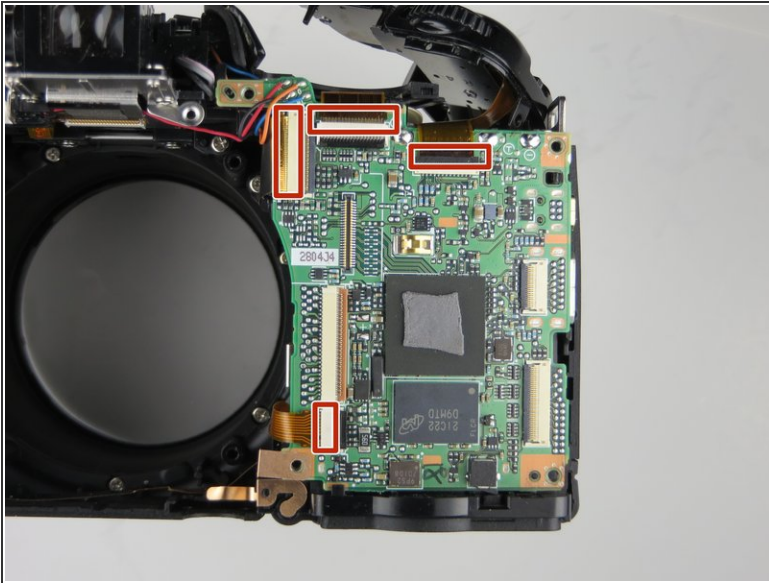
- Looking from the top of the camera, remove the 3mm PH00 Philips screw.

Step 14



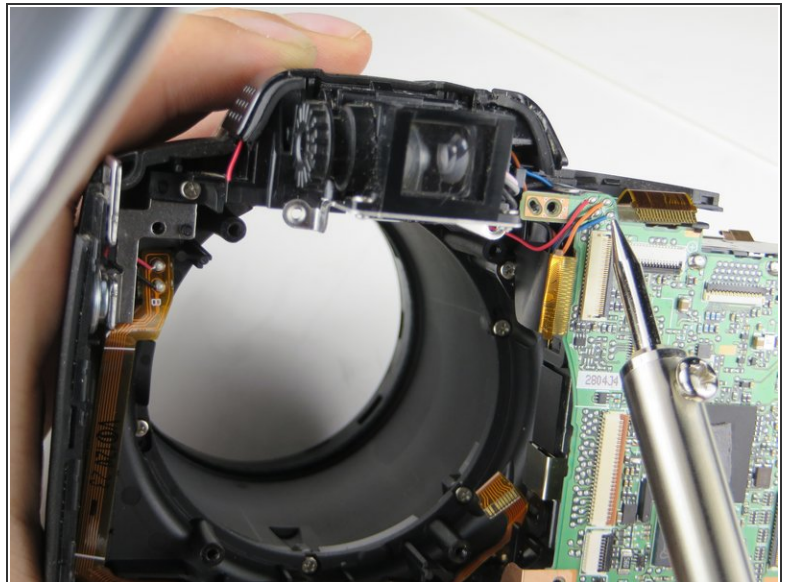
- Now grab the top panel of the thumb grip and pop it off.

Step 15



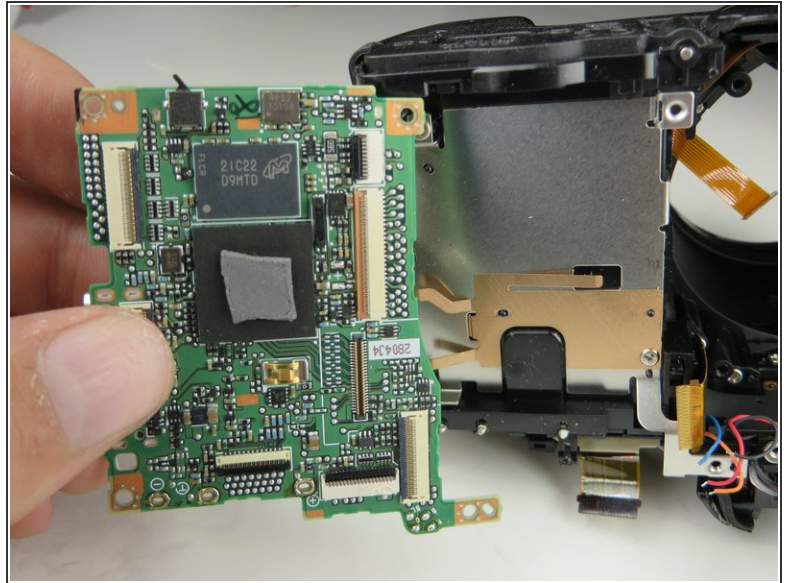
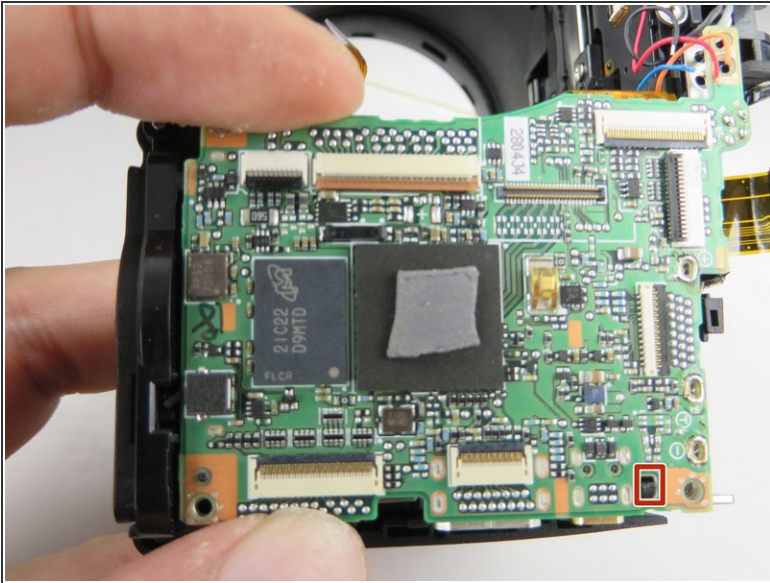
- Now looking at the motherboard, unplug all four ribbon cables on it.

Step 16



- There are four wires that need to be unsoldered.
- There are also three posts that need to be unsoldered.

Step 17



- before you can pull the board off, there is a tab that must be pushed back.

To reassemble your device, follow these instructions in reverse order.