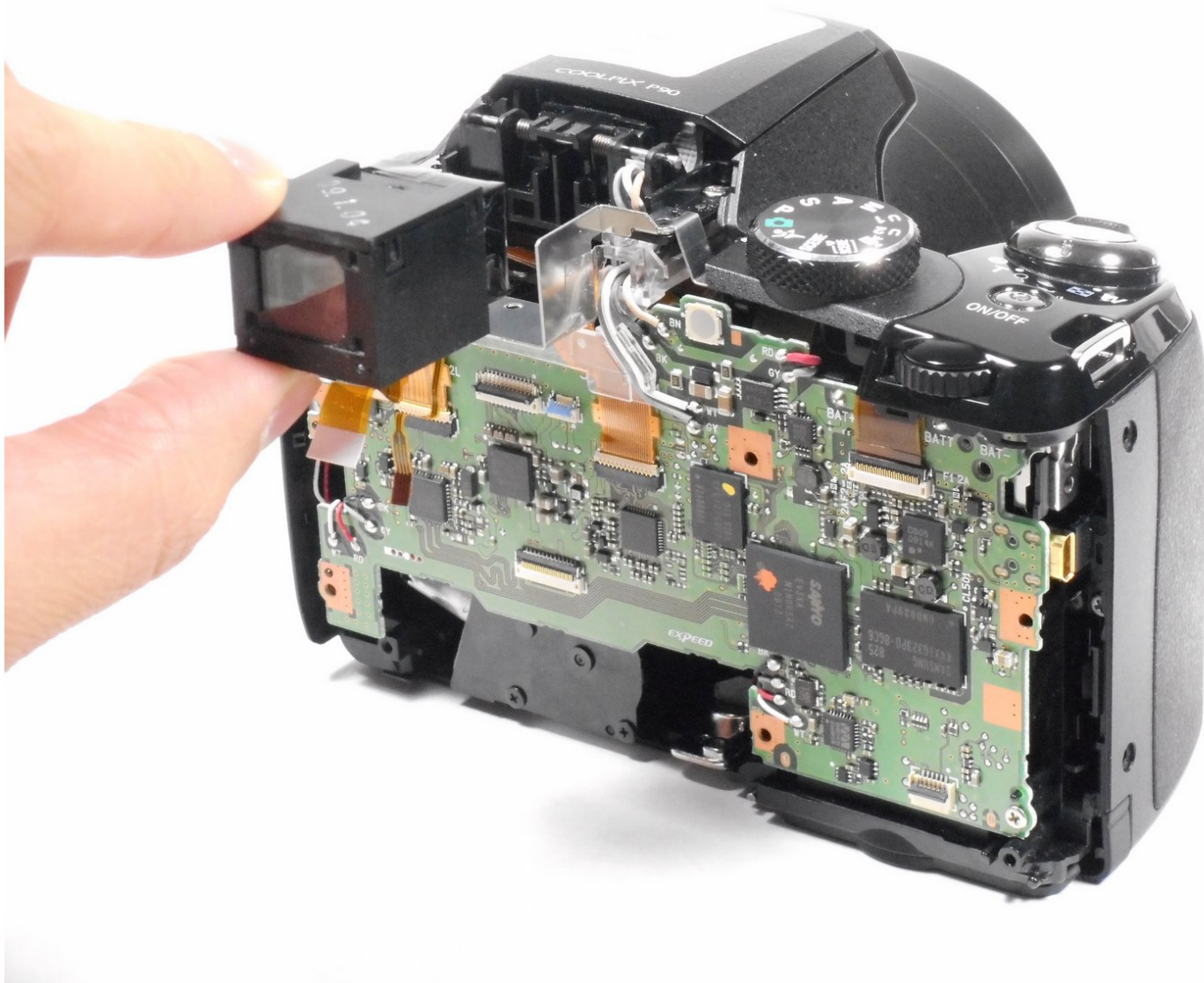




Nikon Coolpix P90 Eyepiece Replacement

This guide shows how to replace the eyepiece.

Written By: Elizabeth Kamine



INTRODUCTION

Replace the eyepiece (plastic rectangular piece around the viewfinder) if it is loose, broken, or lost.



TOOLS:

- [iFixit Opening Tools](#) (1)
 - [Phillips #000 Screwdriver](#) (1)
-

Step 1 — Camera Base



- Use your finger to push the notch of the compartment door to the center of the camera body.
- Release the compartment door, and it will swing open.
- Remove the existing battery with your fingers.

Step 2 — Eyepiece



i Use a Phillips #000 Precision Screwdriver for all of the following steps.

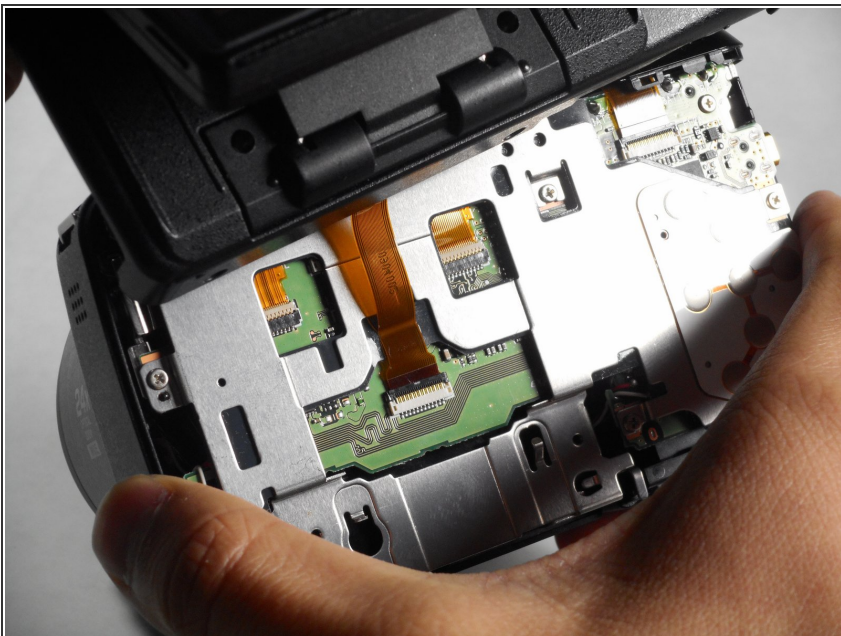
- Remove both 4.5 mm screws holding the bottom into place.
- Remove both 4.5 mm screws holding the side into place.
- Remove the 4.5 mm screw underneath the A/V flap.
- Remove the 4.0 mm screw on the left-side wrist strap loop.

Step 3



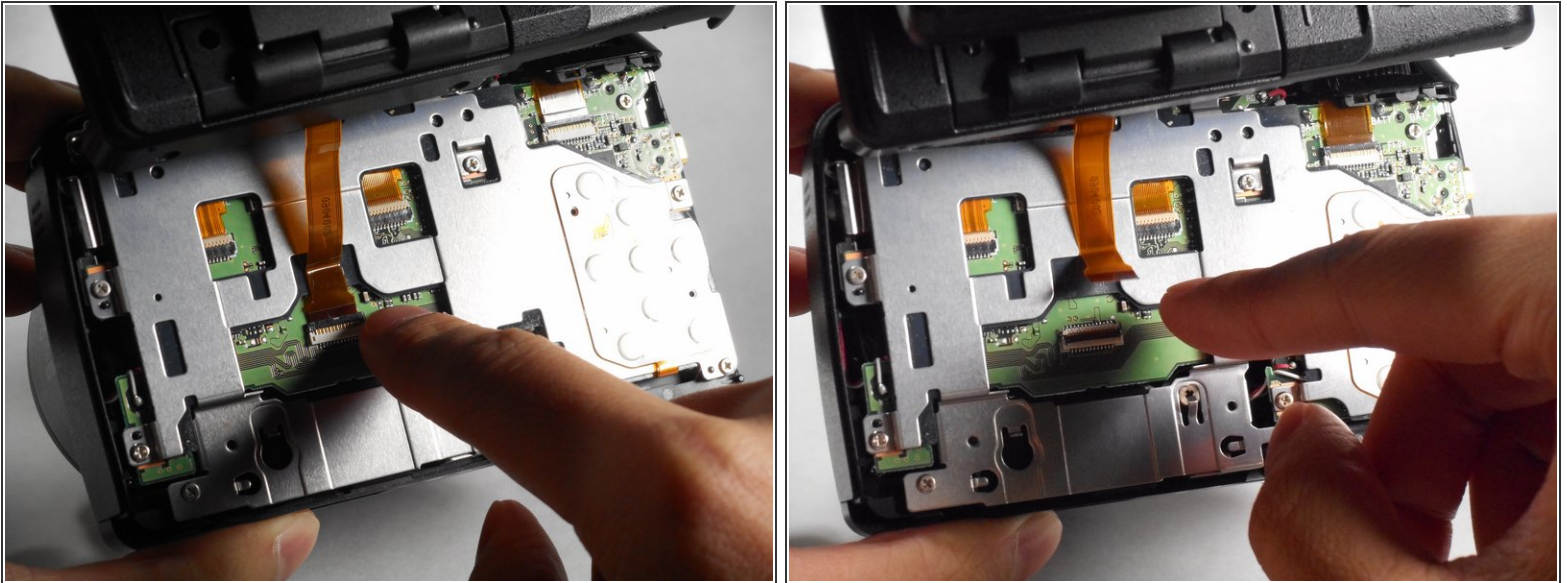
- Lift up the LCD screen to reveal the two screws.
- Using a Phillips #000 Precision Screwdriver, remove the two 3.0 mm screws that hold the arm in place.

Step 4



- Carefully lift the back cover from the camera.
- ⚠ Do NOT completely remove the back cover from the camera yet. There is a data transfer ribbon connecting the LCD screen to the motherboard.

Step 5



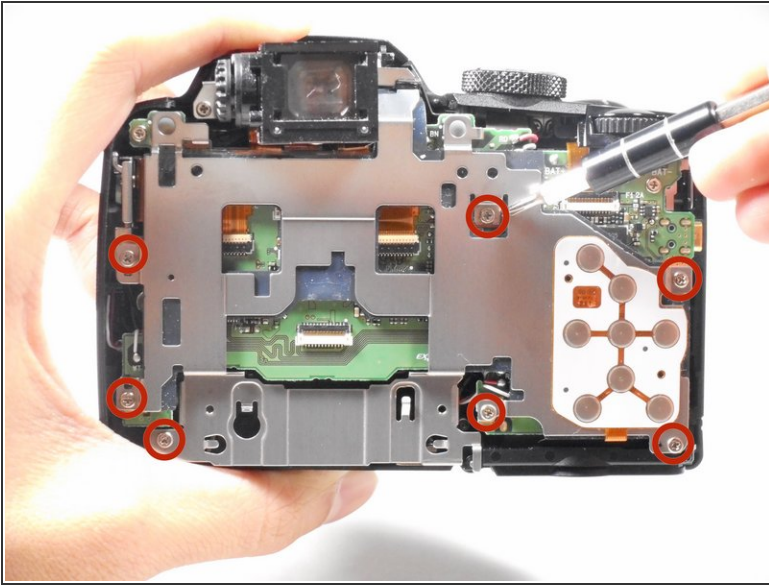
- Press your finger on the top of the latch and pull it down and toward you to open the safety latch and free the ribbon.

⚠ Be careful when releasing the safety latch because it is fragile and may break easily.

- Slide the ribbon out from its socket.

i It is now safe to completely remove the back cover from the camera.

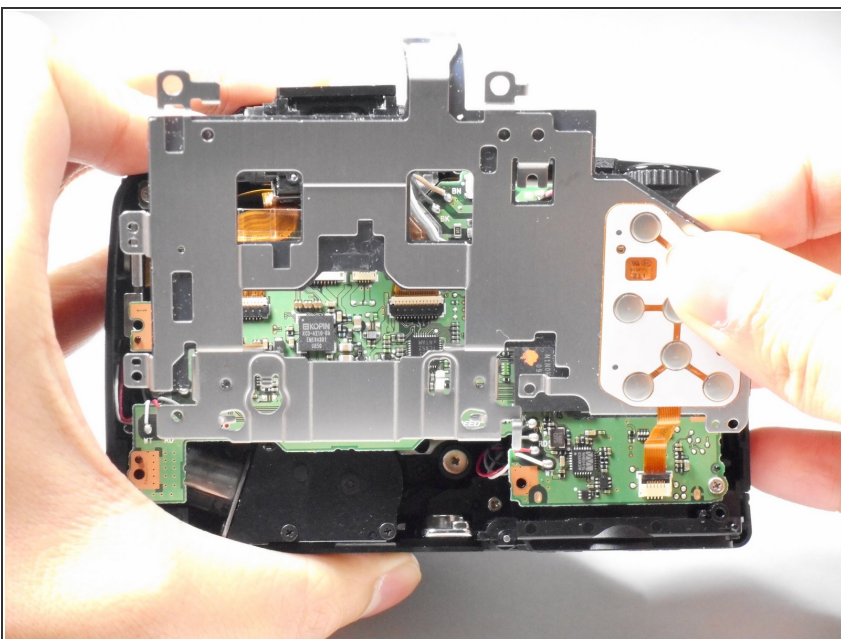
Step 6



i Use a Phillips #000 Precision Screwdriver for all of the following steps.

- Remove the seven 4.0 mm screws that connect the metal plate to the motherboard
- Remove the three 4.0 mm screws that connect the metal hinges to the camera body.

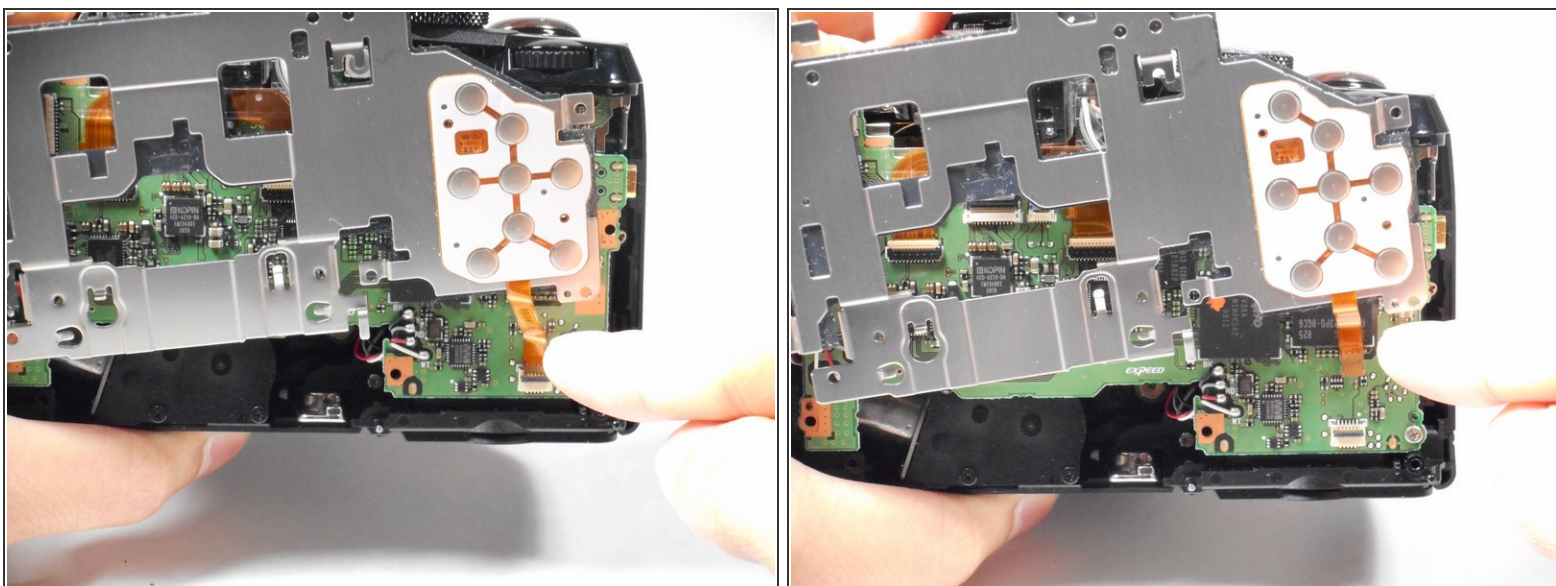
Step 7



- Carefully lift the metal backing from the motherboard.

! Do NOT completely remove the metal backing yet. There is a data transfer ribbon connecting the metal backing to the motherboard.


Step 8



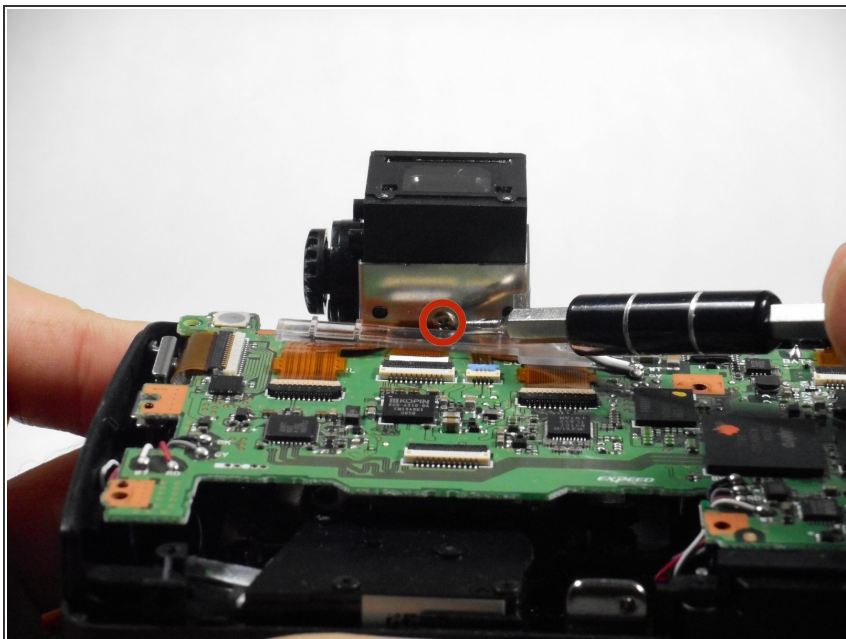
- Press your finger on the top of the latch and pull it down and towards you to open the safety latch and free the ribbon.

 Be careful when releasing the safety latch because it is fragile and may break easily.

- Slide the ribbon out from its socket.

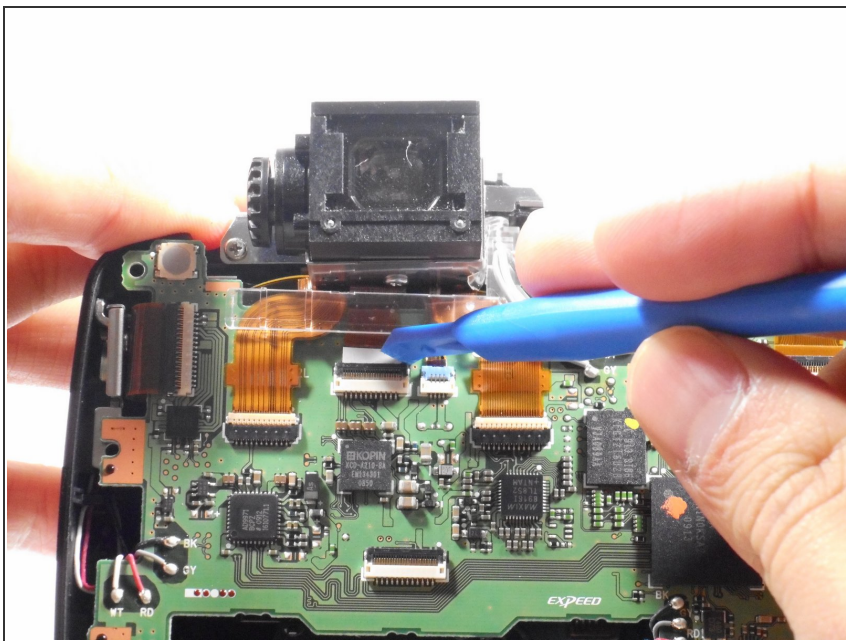
 It is now safe to completely remove the metal backing from the camera.

Step 9



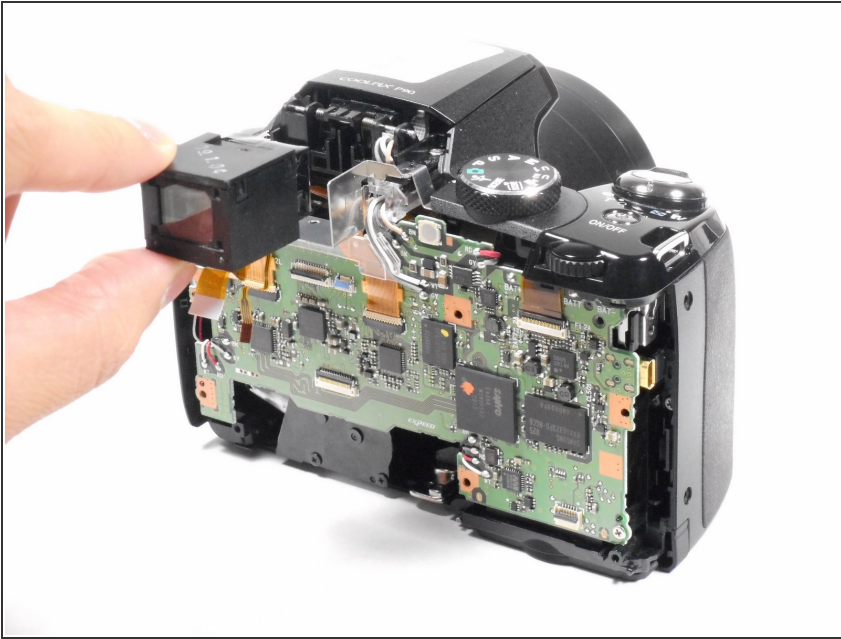
- Using a Phillips #000 Precision Screwdriver, remove the 3.0 mm screw that holds the eyepiece in place.

Step 10



- Using a plastic opening tool, carefully unlatch the safety latch that holds the eyepiece data transfer ribbon in place.
- Slide the ribbon out from its socket.

Step 11



- Remove the eyepiece from the camera.

To reassemble your device, follow these instructions in reverse order.