



A collection of disassembled Nikon Coolpix 2700 camera components, including the main body, lens, LCD screen, battery, and various internal and external modules, laid out on a white background. The components are arranged in a grid-like fashion, showing the internal structure and individual parts of the camera. The main body is a black Nikon Coolpix 2700, featuring a silver lens and a small LCD screen. The lens is a silver, cylindrical component with a black cap. The LCD screen is a black, rectangular panel with a silver bezel. The battery is a black, rectangular unit with a silver label. Various internal and external modules, including the camera's main body, lens, LCD screen, battery, and various internal and external modules, are laid out on a white background. The components are arranged in a grid-like fashion, showing the internal structure and individual parts of the camera. The main body is a black Nikon Coolpix 2700, featuring a silver lens and a small LCD screen. The lens is a silver, cylindrical component with a black cap. The LCD screen is a black, rectangular panel with a silver bezel. The battery is a black, rectangular unit with a silver label. Various internal and external modules, including the camera's main body, lens, LCD screen, battery, and various internal and external modules, are laid out on a white background.



## INTRODUCTION

A while back we heard about the nifty Nikon Coolpix S1000pj, a digital camera with a built-in projector. We were very curious how Nikon packaged everything into this little device, so we decided to do what we do best -- tear it apart!

Check out our YouTube [video](#) of the teardown. We included a quick explanation of the projector's inner workings right around the 2:00 minute mark!



### TOOLS:

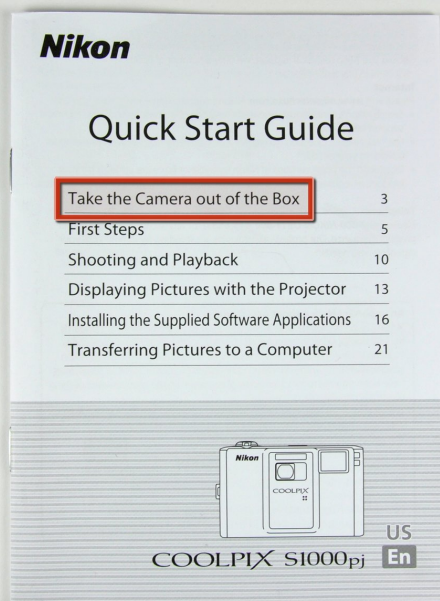
- [iFixit Opening Tools](#) (1)
  - [Phillips #00 Screwdriver](#) (1)
  - [Spudger](#) (1)
-

## Step 1 — Nikon Coolpix S1000pj Teardown



- Contents of the box include:
  - Separate instruction manuals/quick start guides in both English and Spanish. No instructions for you, French Canadians.
  - Battery Charger.
  - A/V and USB Cables.
  - Carrying Strap.
  - Nikon Software Suite Disk.
  - Nikon Remote, model ML-L4.
- The remote even allows you to zoom and activate the shutter from a distance.

## Step 2



- As engineers, we decided the first thing we should do is browse through the instruction manual...
- We're glad Nikon is looking out for the well being of the average Joe, but "Take the Camera out of the Box"? Really?
- Common sense FAIL.

## Step 3



- The extremely simple yet nifty injection molded plastic stand tilts the camera back a few degrees to

allow for projection on vertical surfaces.

- The S1000pj sports a single lamp/single LCD panel projection system to view images in a dimly-lit room.
- The image size can vary from approximately 5 to 40 inches.
- According to the user manual specifications, the output resolution of the projector is VGA equivalent.

## Step 4



- We here at iFixit strongly support the work the Rebel Alliance is doing to Restore the Republic and we fully stand behind their cause.
- "Help me Obi Wan Kenobi, you're my only hope."
- It's a shame the S1000pj doesn't beep or whistle or stop garbage compactors from crushing future Jedi knights.



## Step 5



- The dimensions of the camera are 99.5 x 62.5 x 23 mm (4 x 2.5 x 0.9 in), and it weighs in at approximately 155g (5.5 oz.) without the battery and SD memory card.
- Hidden behind the lens cover in the upper right corner is the Nikkor 5X wide optical zoom VR 5.0-25.0 mm 1:3.9-5.8 lens.
- The back panel houses the comparatively large 2.7-inch High Resolution Bright LCD.
- The slider on the third picture (boxed in red) focuses images projected from the front of the camera.

## Step 6



- Removing the rechargeable lithium-ion battery.
- The battery, model EN-EL12, is rated 1050 mAh at 3.7V making the power output 3.885 Wh.
- Looks like Nikon rounds up.
- The battery weighs approximately 22.5 g (0.8 oz) excluding the terminal cover.

## Step 7



- We're glad we can trust our good'ol Phillips screwdriver to help us remove a few screws from the battery-chamber/memory card slot cover.
- After a few pries with a plastic opening tool, the chromed plastic side cover simply pops off the camera body.

## Step 8



- A few more screws secure the rear case to the body.
- After prying around its perimeter, we lift the rear case off the body.
- Surprisingly, both the front and rear outer cases are machined out of aluminum.
- The button covers attach to the rear case while the electronic portion is attached to the metal shield next to the display.



## Step 9



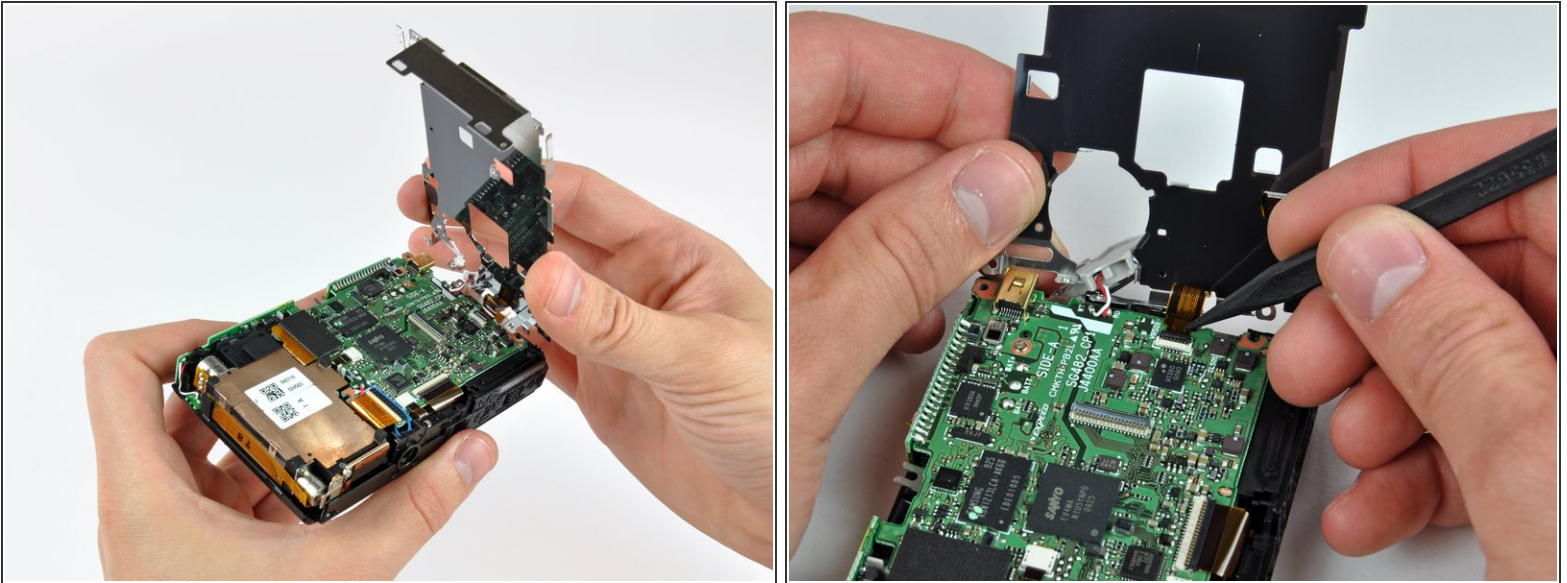
- The display is attached to the metal shield by several fingers that apply pressure between the shield and the edge of the display.
- Flip back the ZIF cable lock and remove the display.
- Use a plastic opening tool to pop the speaker assembly out of the metal shield.
- The speaker pumps out some pretty fresh beats when the camera is in projector mode.

## Step 10



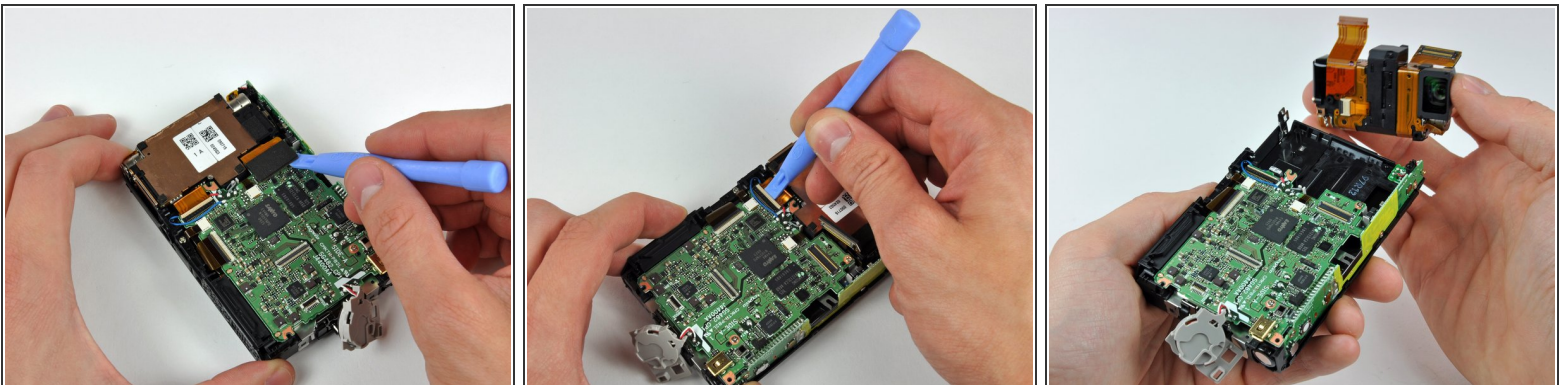
- Remove a few screws around the perimeter of the open back of the camera.
- After some (careful) prying, the top and right covers pop right off.
- Interestingly, the controls along the top of the camera are attached to a board below the top cover. The top cover just houses the button covers.

## Step 11



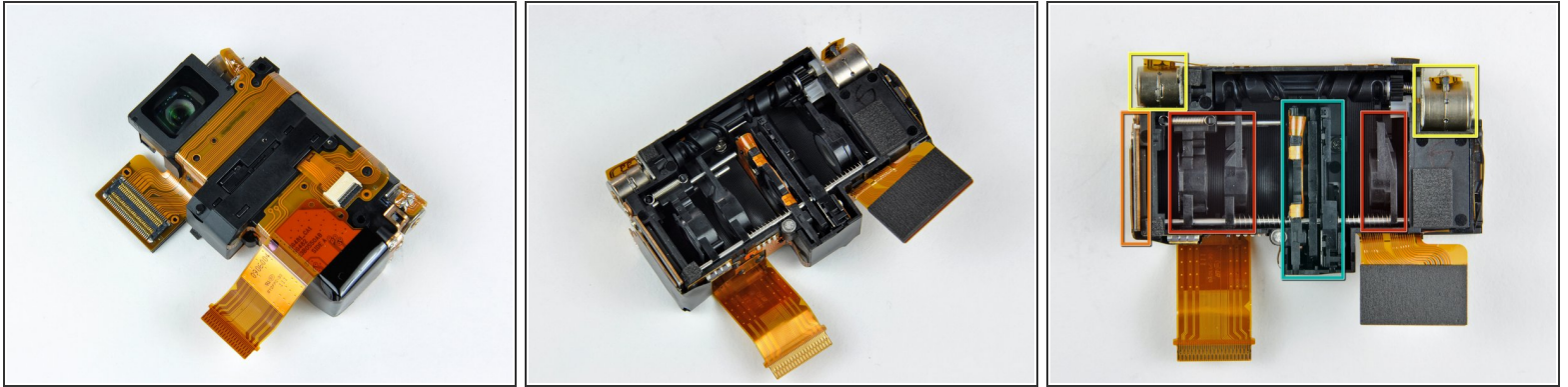
- Carefully lift the protective steel panel to reveal the logic board.
- Use the tip of a spudger to flip back the ZIF cable lock to disconnect the control ribbon cable before removing the panel.

## Step 12



- Pry the upper camera cable connector straight up off the logic board.
- Flip back the ZIF cable lock and remove the lens assembly.
- Copper was an interesting choice for the rear cover of the lens assembly.

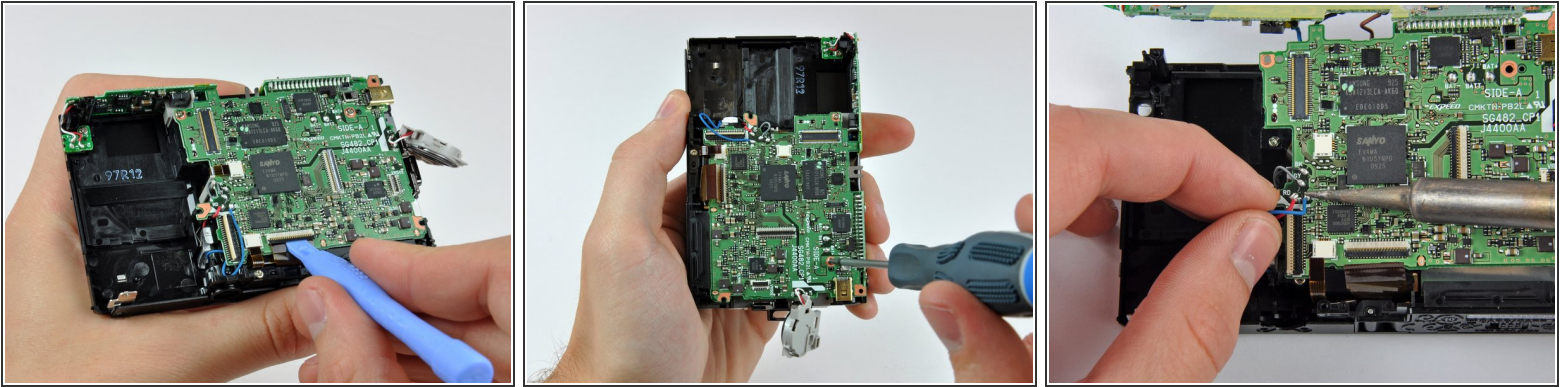
## Step 13



- The camera module in all its glory.
- Like most compact digital cameras with optical zoom that have no externally telescopic lenses, the S1000pj's internal zoom lenses move perpendicular to the front face.
- The basic components include:
  - A few movable lenses.
  - CCD image sensor.
  - Optical zoom motor and feedback sensor to position the lenses.
  - Aperture and image stabilization modules.
- Light has to travel through at least four glass lenses until it shines on the CCD sensor. What a journey.

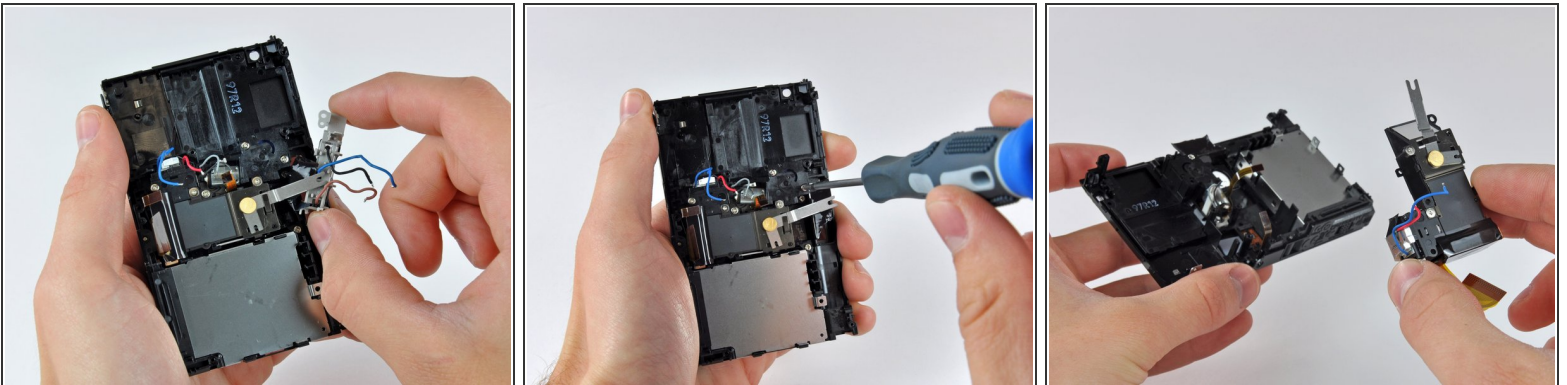


## Step 14



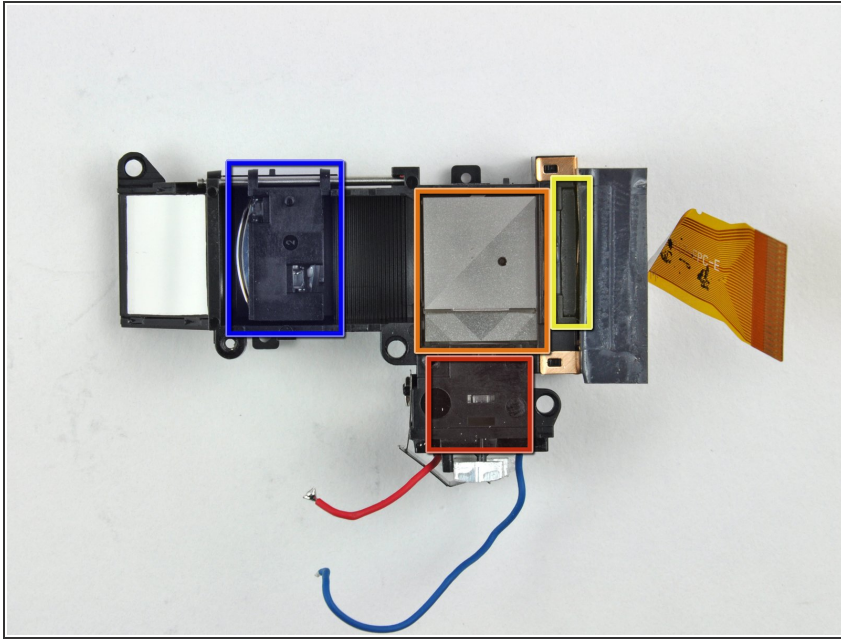
- We had to disconnect a few additional ZIF cables and remove some screws still securing the the logic board to the main chassis.
- Disassembling this camera is not for the faint of heart -- Nikon definitely did not intend this device to be user serviceable.
- We even had to de-solder a bunch of components including the camera cover actuator, projector LED, and flash bulb.

## Step 15



- To remove the projector lens, first remove the flash tube.
- After removing a few screws...
- ...The projector assembly lifts right out.

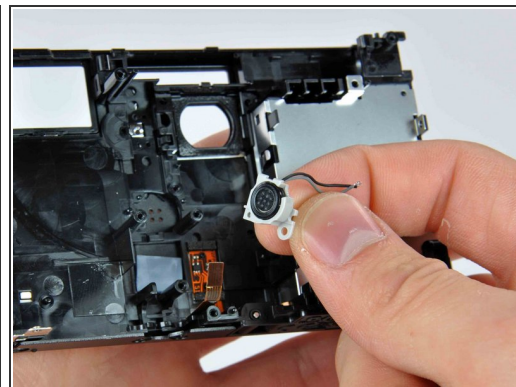
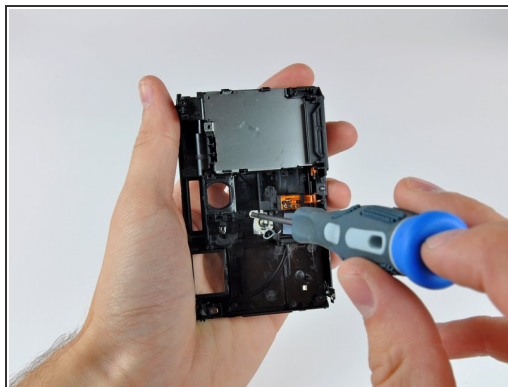
## Step 16



- Here's an inside look at the projector assembly sans the protective cover.
- Light for projecting images is supplied by a very powerful LED (shown in red) that even has its own heat sink to conduct heat to the aluminum front panel.
- As light leaves the LED it passes through some filters and lenses (shown in orange).
- A good deal of engineered optical reflection allows the light emitted by the LED to reflect through a tiny LCD panel (shown in yellow) and head toward the mirror.
- Before bouncing off the angled mirror and exiting the camera, the projected image passes through a focusing lens (shown in blue) connected to the slider on the top panel.

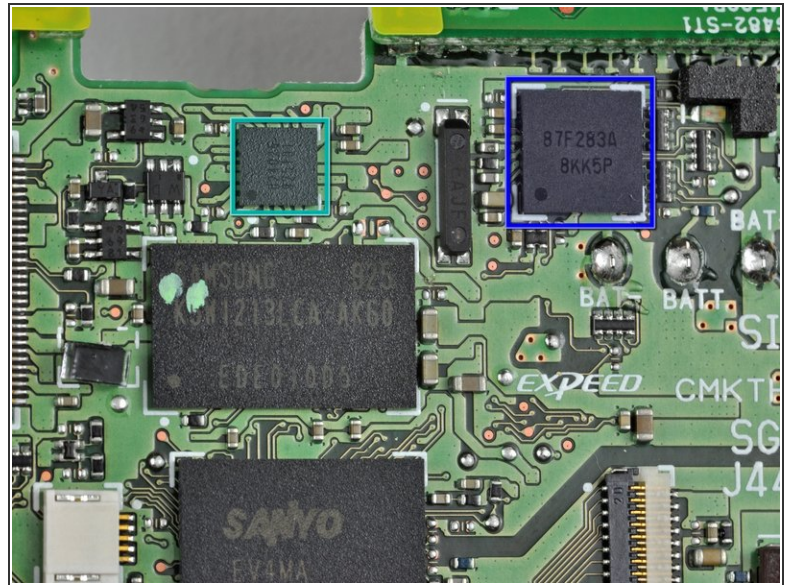
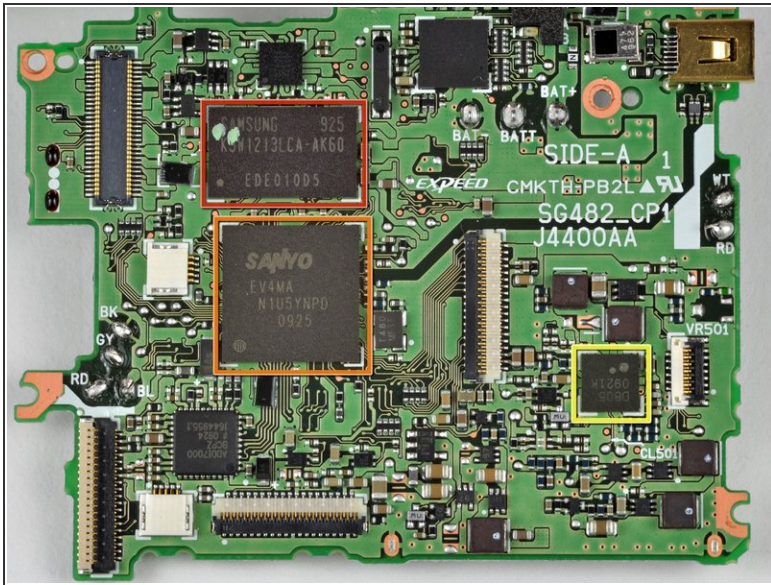


## Step 17



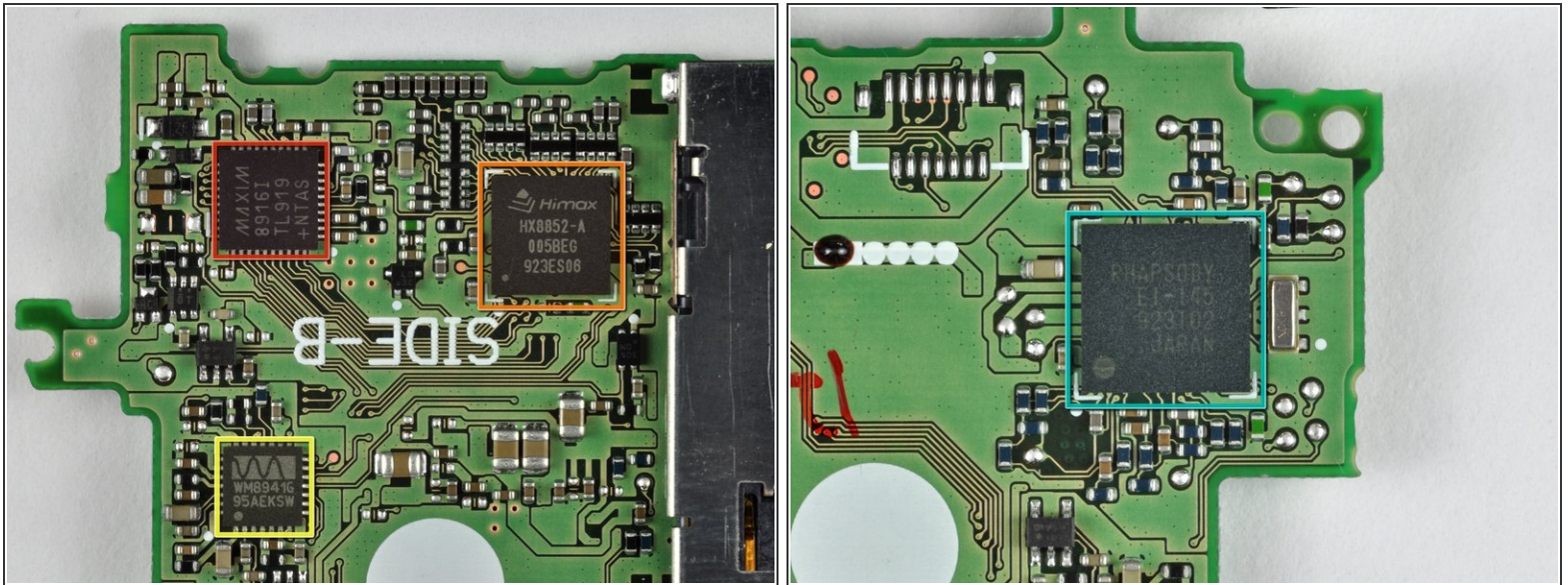
- Almost there...
- Remove the automatic lens cover door first. The lens cover is motorized and opens anytime the camera function is activated.
- After the lens cover is out, removing the front facing microphone is a snap.

## Step 18



- The main players on 'SIDE-A' of the board include:
  - Samsung 925 K5W1213LCA-AK60 EDE010D5
  - Sanyo EV4MA N1U5YNPD 0925
  - D805 0921K
  - ADDI7000 BCPZ 0924 1644955.1
  - 87F283A 8KK5P

## Step 19



- Residing on 'SIDE-B' of the board are:
- MAXIM 8916I TL919 +NTAS
- HIMAX HX8852-A 005BEG 923ES06 LCOS display controller with interface compliant to MIPI.
- Wolfson Microelectronics WM8941G 95AEKSW mono CODEC with speaker driver and video buffer.
- RHAPSODY E1-145 923102.



## Step 20



- Nikon Coolpix S1000pj...you've just been Torn'd!
- That's our new phrase, Torn'd.
- That does it for this edition of iFixit's riveting teardown. Join us next time when we continue our teardown debaucheries!