



# Nikon Coolpix S210 Back Case Replacement

Remove the camera's back case.

Written By: Paul Doyle



---

# INTRODUCTION

This is the first part to taking apart your Nikon Coolpix S210.



## TOOLS:

- [Phillips #00 Screwdriver](#) (1)
  - [Spudger](#) (1)
-

## Step 1 — Battery



- Place thumb on the battery cover panel on the bottom of the device.
- Slide the panel to the right away from the camera.

## Step 2



- Slide the orange latch outward towards the corner of the camera.
- The battery should pop out.
- Remove the battery and reattach the cover.



### Step 3 — Back Case



- After removing the battery, unscrew the four 3.10mm screws on the side opposite the buttons.

### Step 4



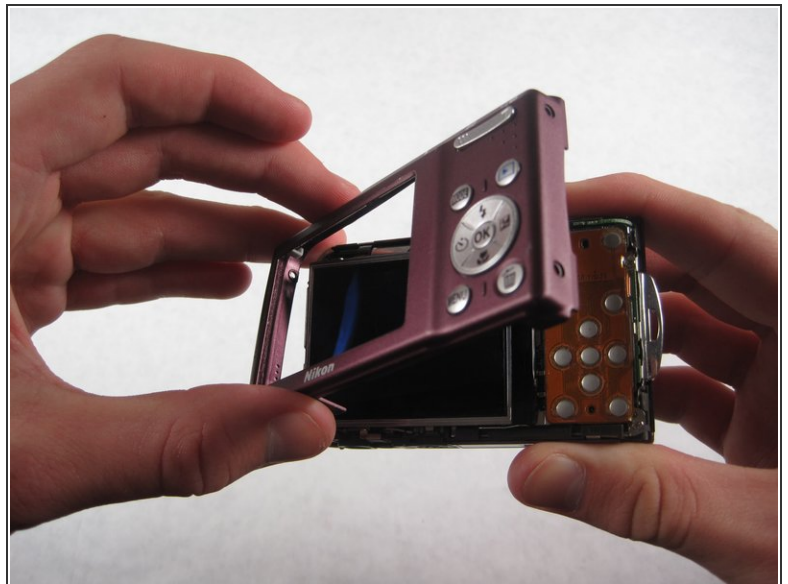
- Unscrew the three 4.05mm screws on the bottom of the camera below the lens.

## Step 5



- Unscrew the two 4.05mm screws on the side next to the buttons.

## Step 6



- Gently wedge the flat end of the spudger between the back case and the wrist-strap mount.
- ⓘ The wrist-strap mount is the thin metal piece on the side of the camera. Your camera may have the wrist-strap attached, but you will not need to remove it to continue.
- Carefully pry the back case away from the camera and then gently lift it off.

To reassemble your device, follow these instructions in reverse order, paying careful attention to the locations of the different sizes of screws.