



Nikon Coolpix S220 LCD Replacement

This guide will teach the reader how to remove the LCD screen from the camera.

Written By: Shauna



INTRODUCTION

This guide will show the reader how to remove the LCD Screen in case it needs to be replaced.



TOOLS:

- [Tweezers](#) (1)
-

Step 1 — Outer Cover



- Remove the two 2.8 mm screws on the left side of the camera.

Step 2



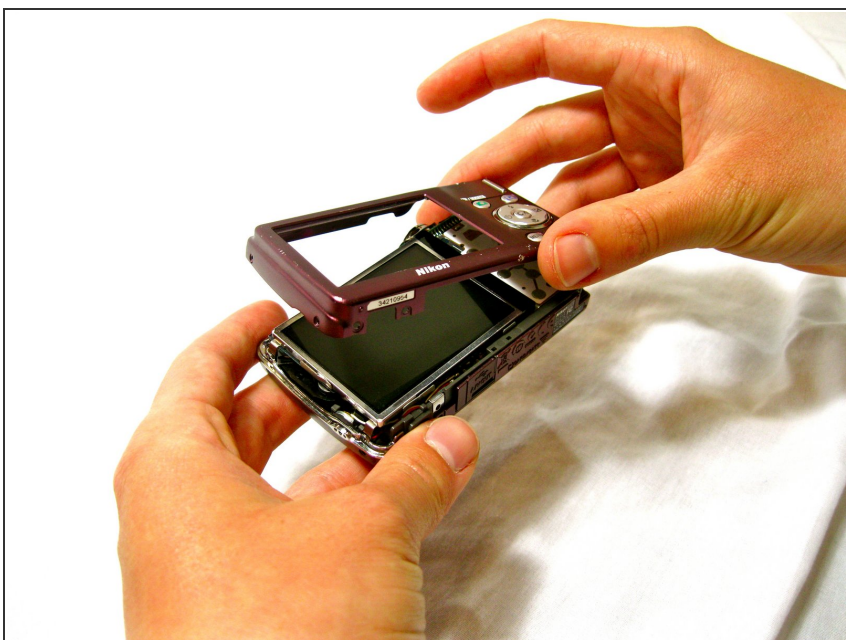
- Remove the four 2.8 mm screws on the right side of the camera.

Step 3



- Remove the three 4.1 mm screws on the bottom of the camera.

Step 4



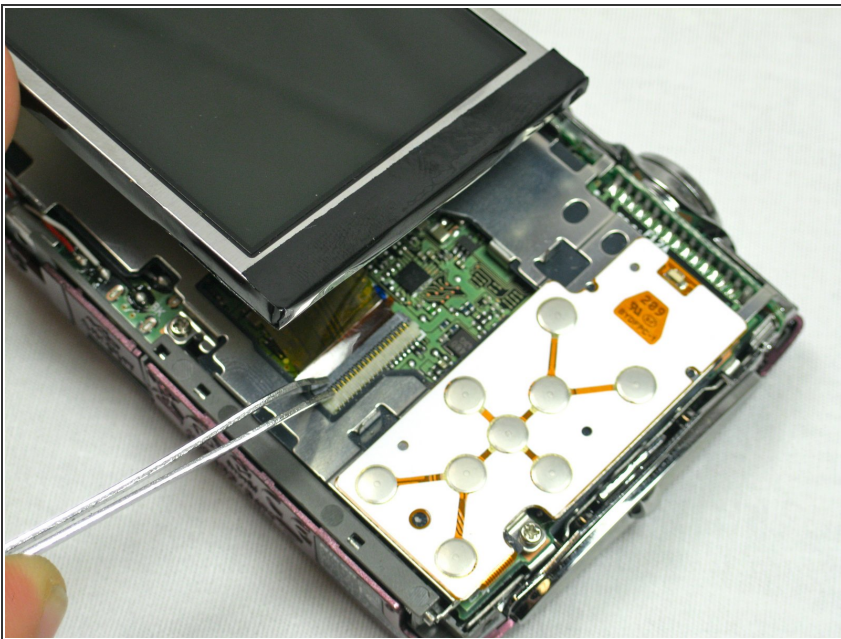
- Gently lift the rear cover from the camera.

Step 5 — LCD



- Gently lift the screen out of its place.
- ⓘ You will need to hold the screen slightly above the camera because it will still be attached to the camera by an orange ribbon cable.

Step 6



- Use the tweezers to lift the ZIF connector which is holding the ribbon cables that connect the LCD screen to the motherboard.

Step 7



- Slowly pull the screen from the camera.

To reassemble your device, follow these instructions in reverse order.