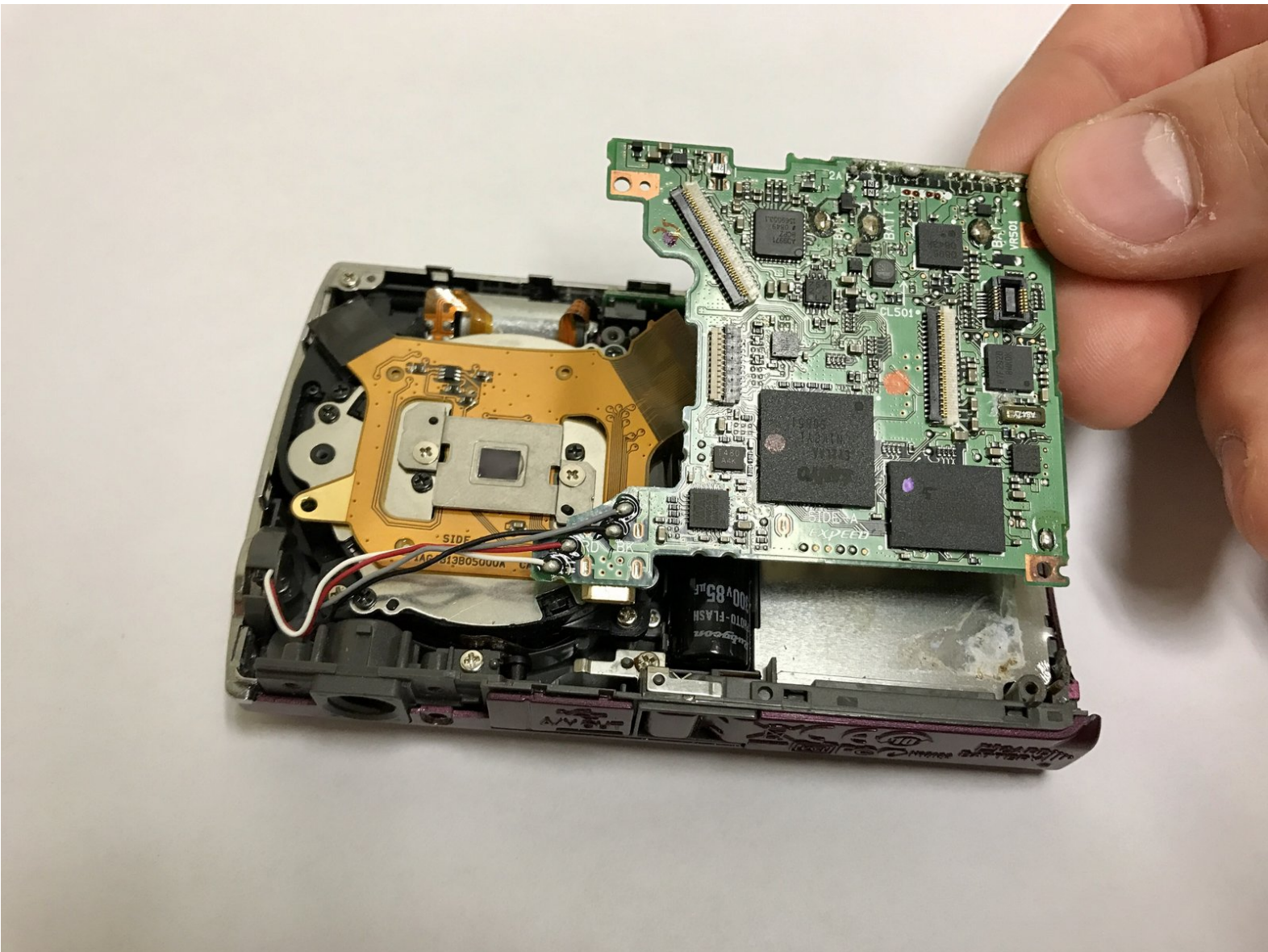




Nikon Coolpix S230 Motherboard Replacement

This guide will show you how to replace the motherboard on your Coolpix S230.

Written By: Chris Helms



INTRODUCTION


Is your camera no longer working? Did you recently damage your camera, like by dropping it or getting it wet? Your motherboard may be damaged. This guide will show you how to replace it.

TOOLS:

- [iFixit Opening Tools](#) (1)
 - [Tweezers](#) (1)
 - [Phillips PH000 Screwdriver](#) (1)
 - [Soldering Iron](#) (1)
-

Step 1 — LCD Screen




 Ensure the camera is turned off and the battery is removed.

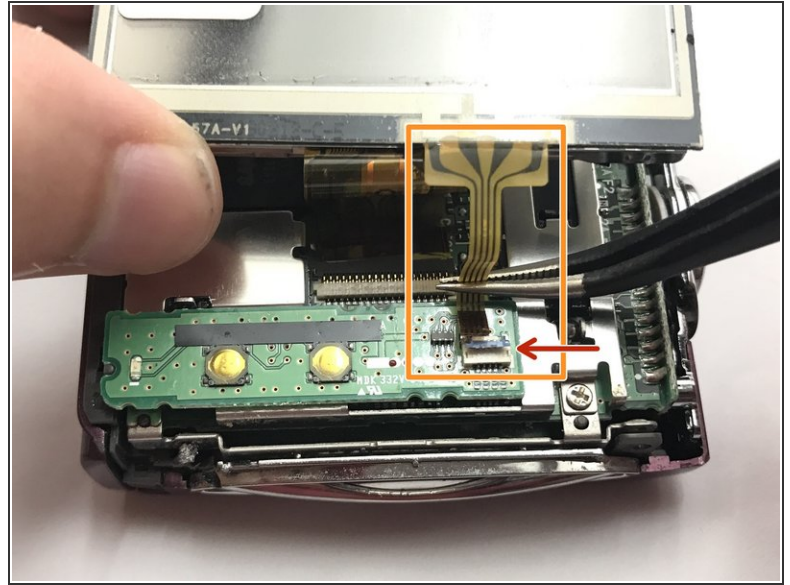
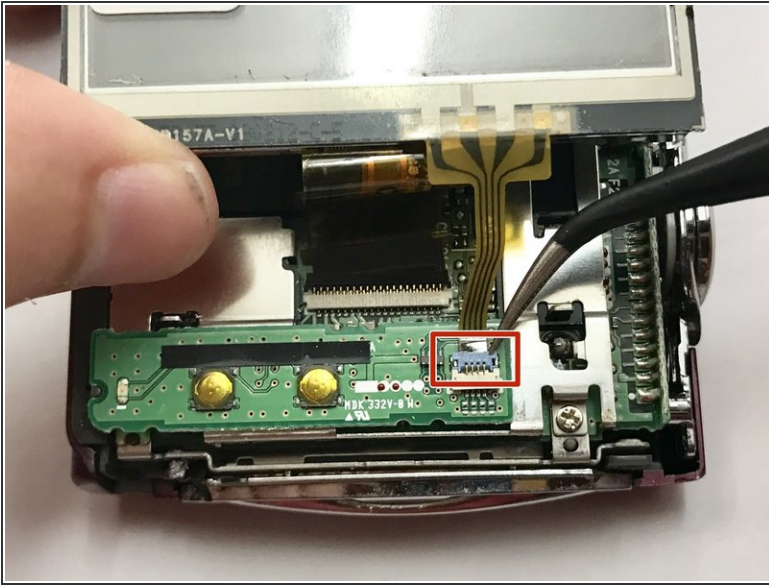
- Using a Phillips #000 screwdriver, remove the four 2-mm screws from the side of the camera.
- Remove the two 3-mm screws from the other side of the camera.
- Finally, remove the three 4-mm screws from the bottom of the camera.

Step 2



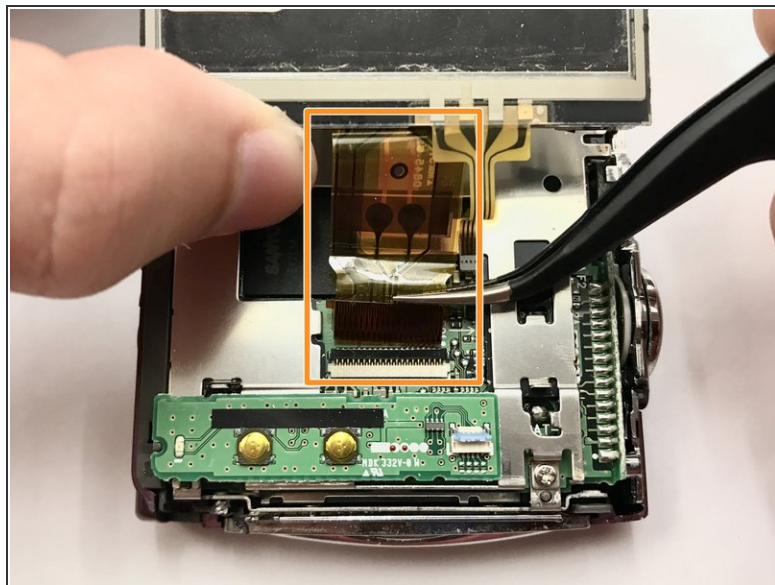
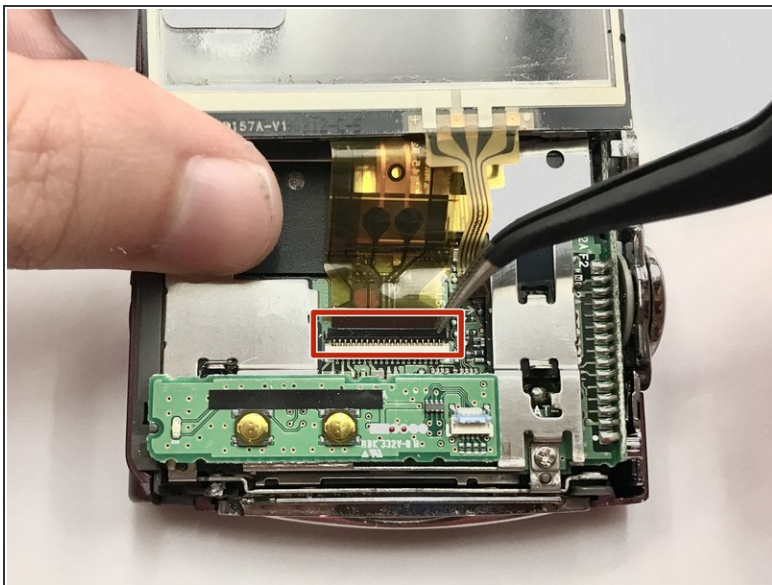
- Insert the plastic opening tool into the seam where the front and back parts of the case meet on the bottom of the camera, and slide it along the bottom. Continue along the next side to separate the back part of the case.
-  If necessary, continue along the third and fourth sides until the case separates easily.
- Lift the back off of the case.

Step 3



- Carefully lift the LCD screen to reveal two orange ribbons connecting the screen to the camera.
- Use tweezers to carefully lift the blue retaining flap holding down the orange ribbon cable. (Flap can be seen open in the second photo)
- Slowly wiggle the ribbon cable back and forth while pulling away from the zero insertion force (ZIF) connector to disconnect the cable.

Step 4



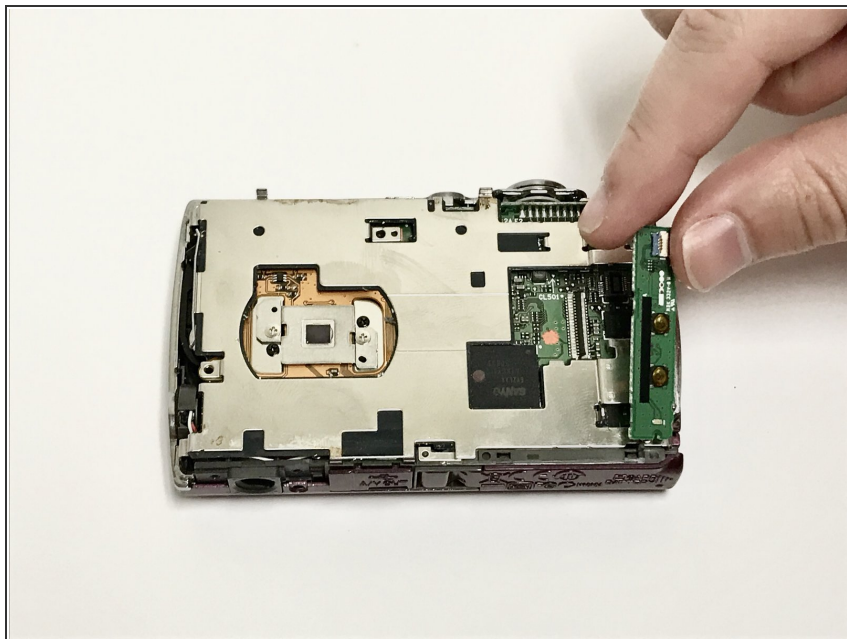
- Using tweezers, lift the black retaining flap holding down the larger orange ribbon cable.
- Carefully remove the ribbon cable from the ZIF connector as before.

Step 5



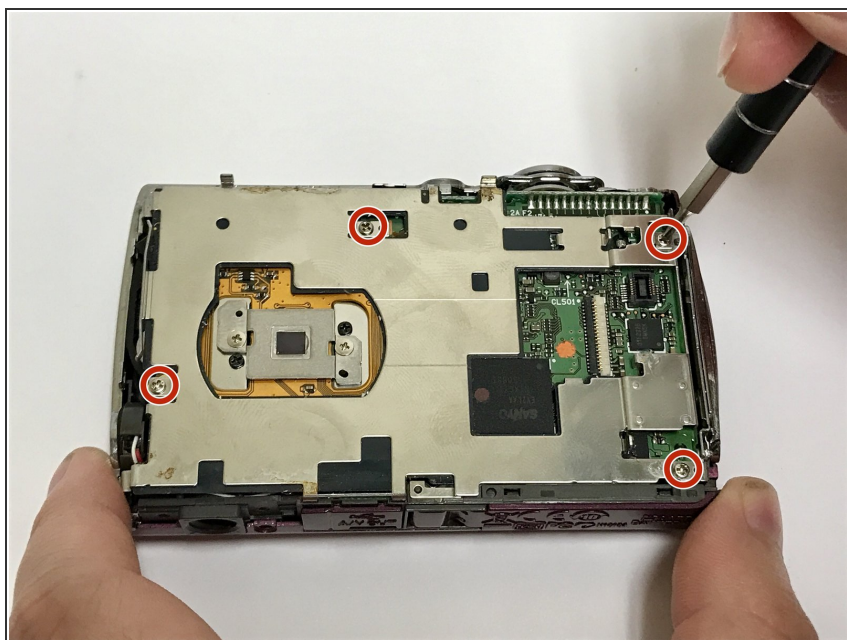
- Lift the LCD screen away from the camera.

Step 6 — Button Circuit Board



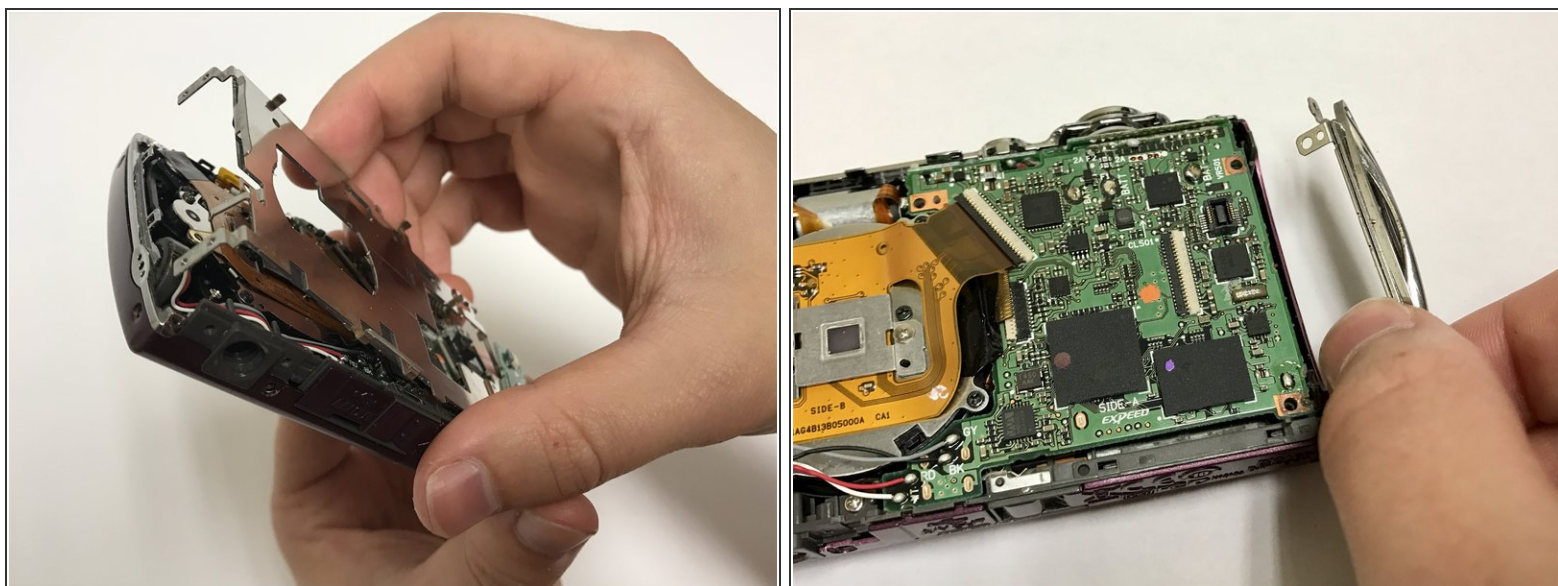
- Lift the button circuit board by gently popping it out of its connector.

Step 7 — Motherboard



- Using a #000 Phillips screwdriver, remove the four 4-mm screws from the metal plate.

Step 8



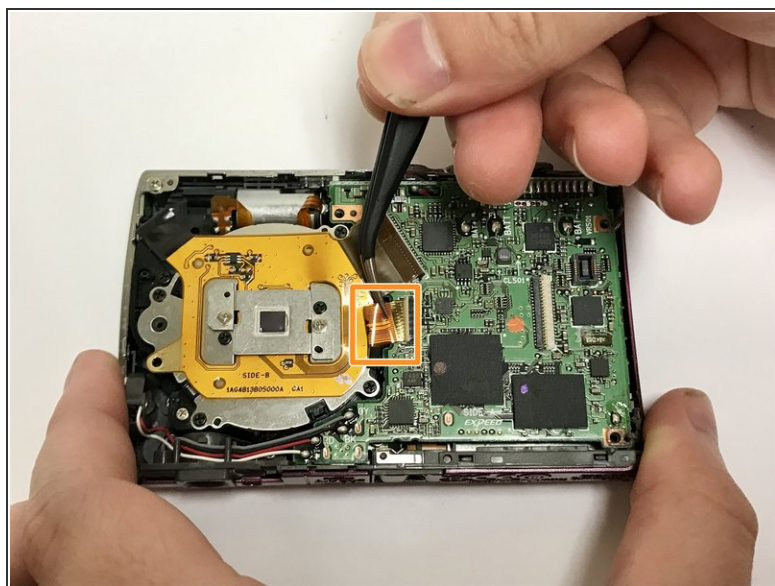
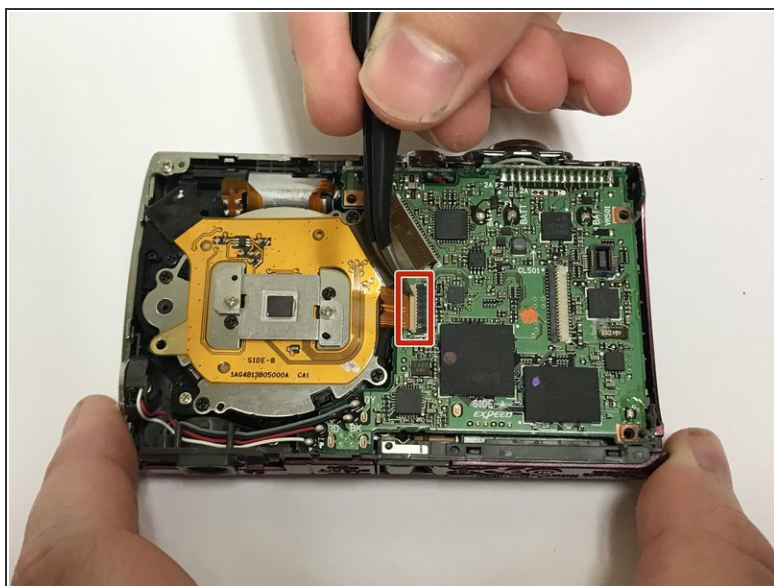
- Lift the plate from the camera to reveal the motherboard.
- ⓘ Once the plate is removed, the metal attachment for the camera strap on the side of the camera will no longer be secured to the device, and should be set aside.

Step 9



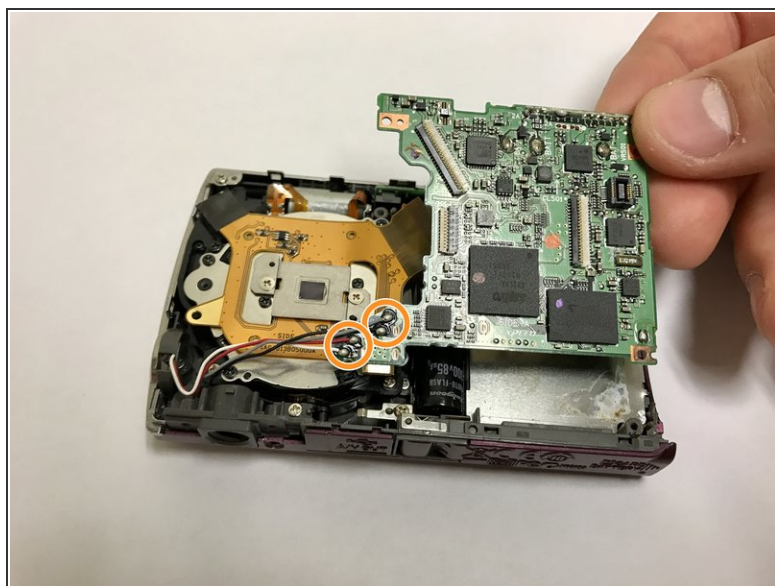
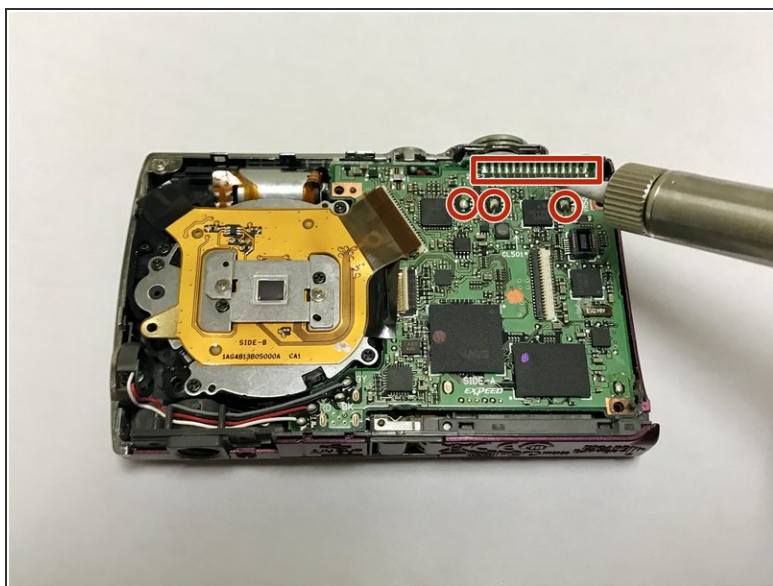
- Use tweezers to lift the black retaining flap for the larger ribbon cable connecting the motherboard to the lens.
- Continue using the tweezers to gently pull the ribbon cable out of the ZIF connector.

Step 10



- Use tweezers to lift the beige retaining flap for the smaller, orange ribbon cable that attaches the motherboard to the lens.
- Use tweezers to gently pull the orange ribbon cable from the ZIF connector.

Step 11



- Remove the solder using a soldering iron by following the instructions in [this guide](#).
- Remove the solder connecting the motherboard to the speaker and mic to completely detach the motherboard.

To reassemble your device, follow these instructions in reverse order.