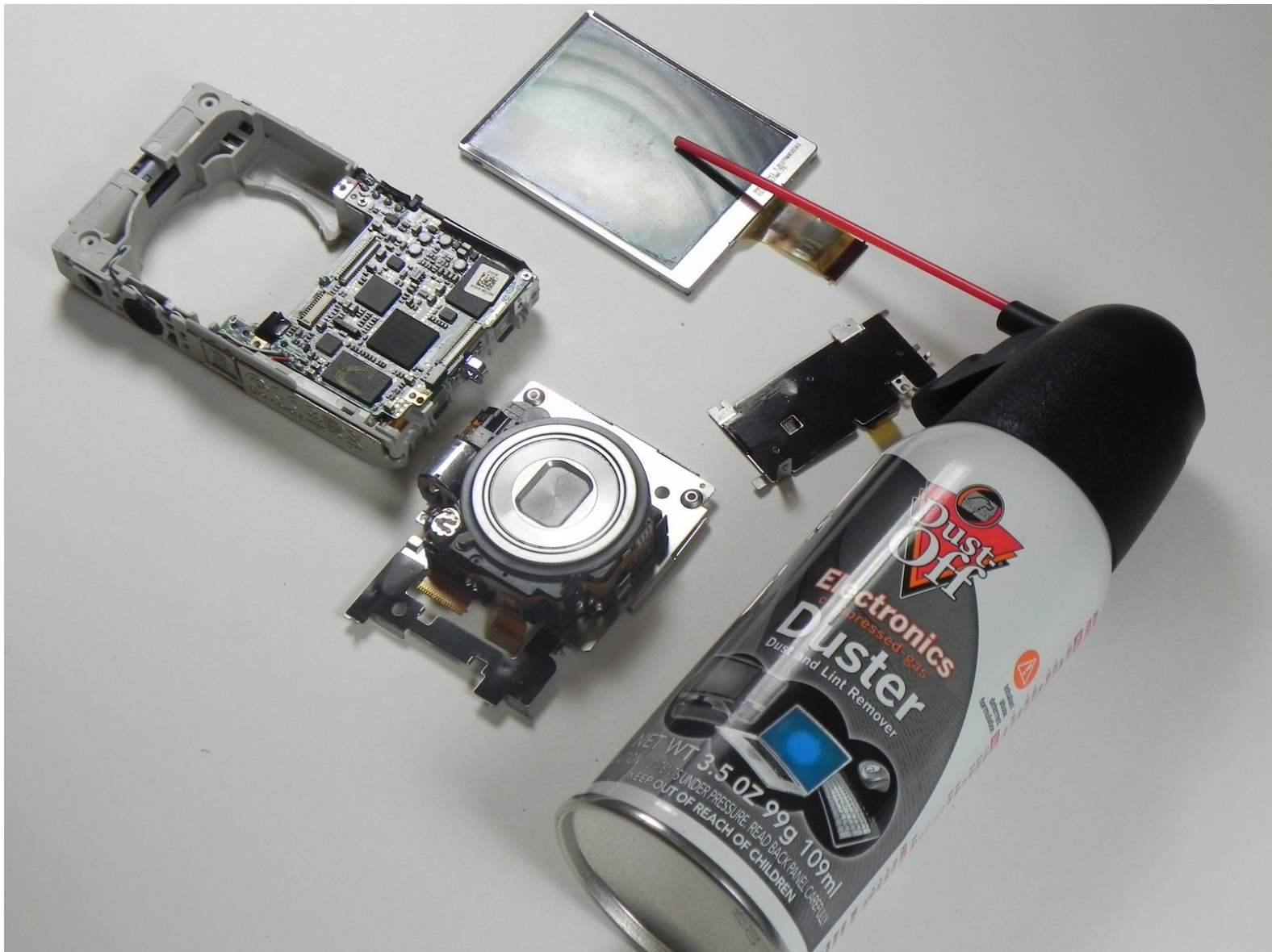




Nikon Coolpix S3100 Camera Disassembly

This guide will accomplish the clean of small parts when sands get inside the camera.

Written By: Jorge



INTRODUCTION

If you happened to drop camera into dirt or sand, this guide will explain to you on how to clean it.

TOOLS:

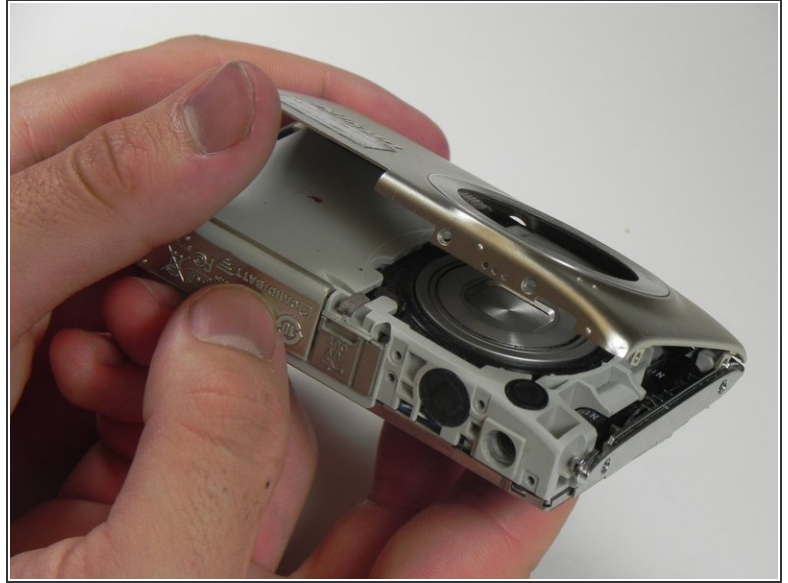
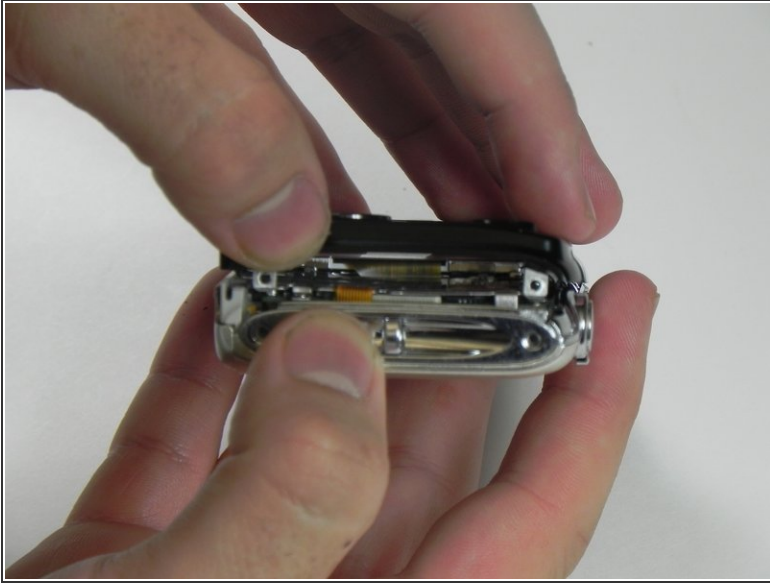
- [Phillips #000 Screwdriver](#) (1)
 - [Spudger](#) (1)
 - [Compressed Air](#) (1)
-

Step 1 — Nikon Coolpix S3100 disassembly




- Remove 8-2.46 mm screws from both sides and bottom of camera using a #000 Phillips screwdriver.
 - Remove 2 screws from left side. (picture 1)
 - Remove 4 screws from bottom. (picture 2)
 - Remove 2 screws from right side. (picture 3)

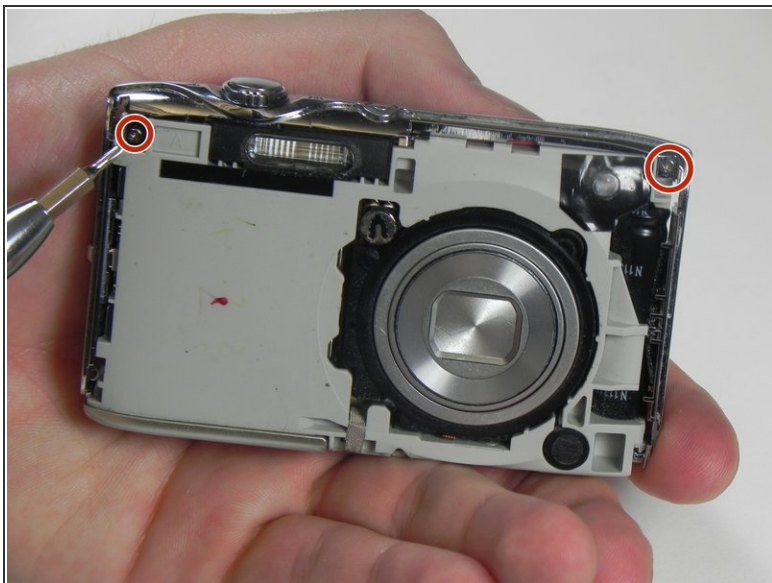
Step 2



- Remove black cover pulling up with left thumb. Hold silver cover with right thumb.
- Remove silver cover lifting up with left thumb. Hold the camera with right thumb.

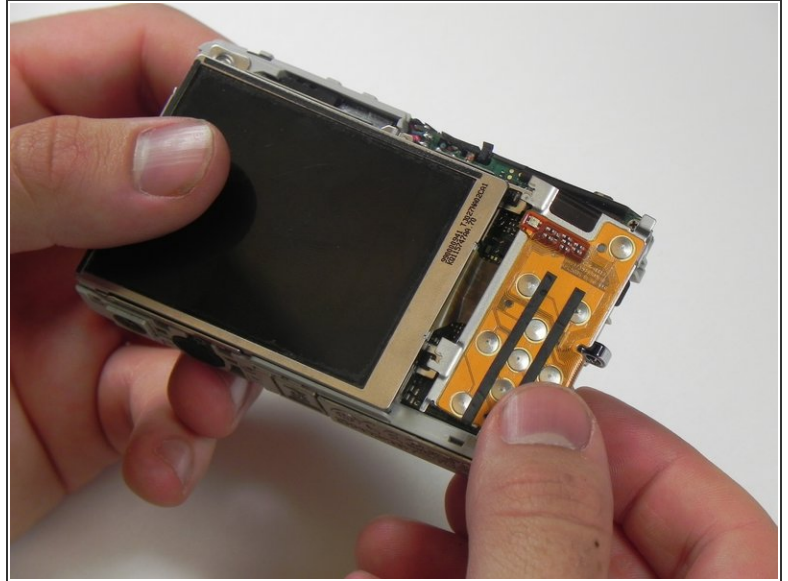
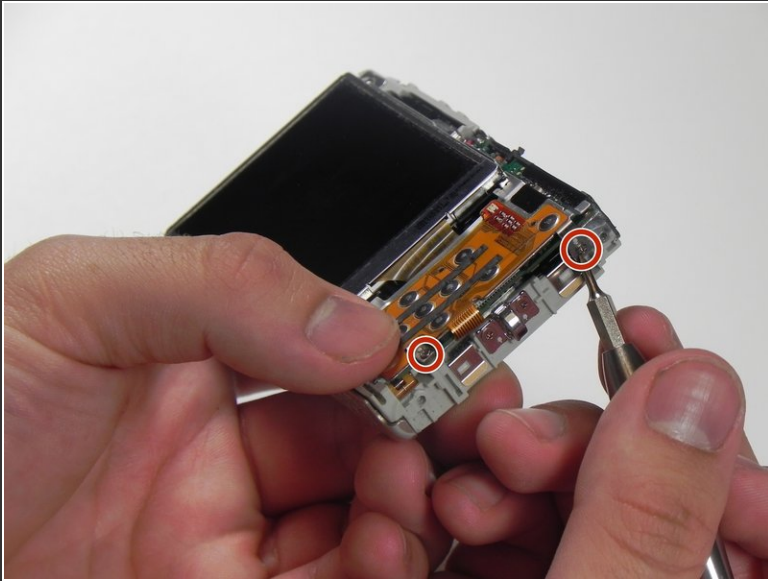
 Once internal circuit board is exposed, the red and blue wire terminals at top center can provide a nasty shock from the charged flash capacitor (silver can to left of terminals). BE CAREFUL!

Step 3



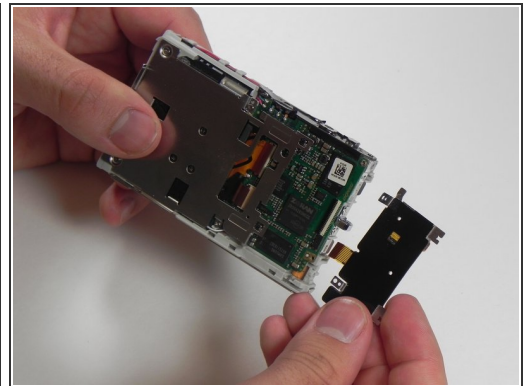
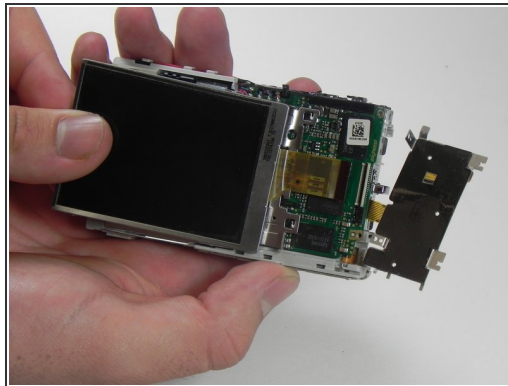
- Remove 2-2.10mm screws in the front of the camera using a #000 Phillips screwdriver.
 - Remove the two screws.
- Gently pull up to detach the frame. (picture 2)

Step 4 — Nikon Coolpix S3100 Camera Disassembly



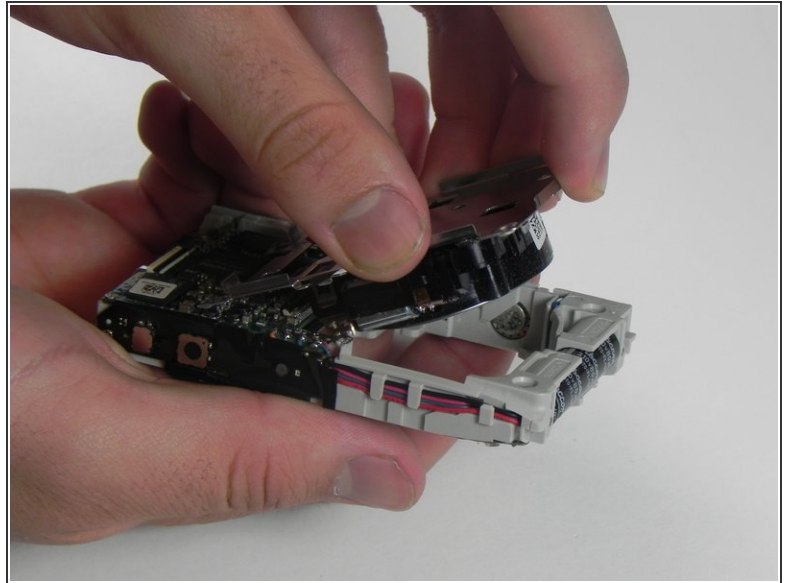
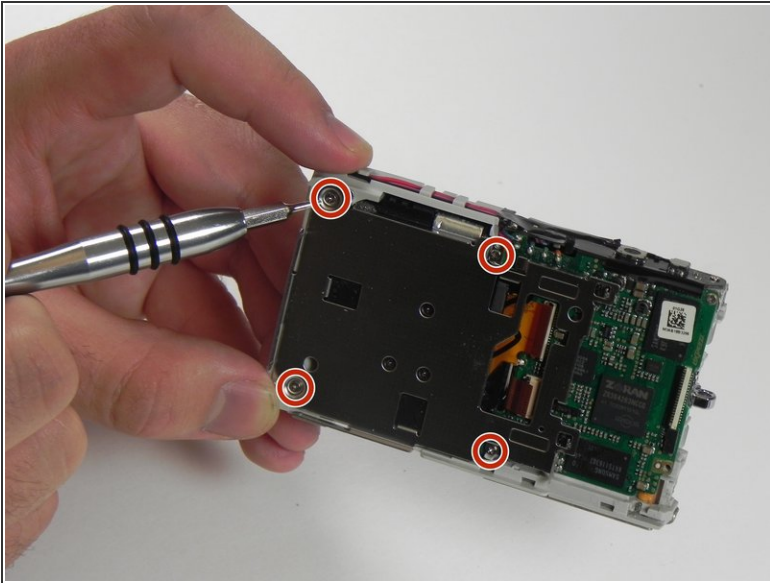
- Remove 2-2.10mm screws using a #000 Phillips screwdriver.
- Gently pull the orange board to the right. (picture 2)

Step 5



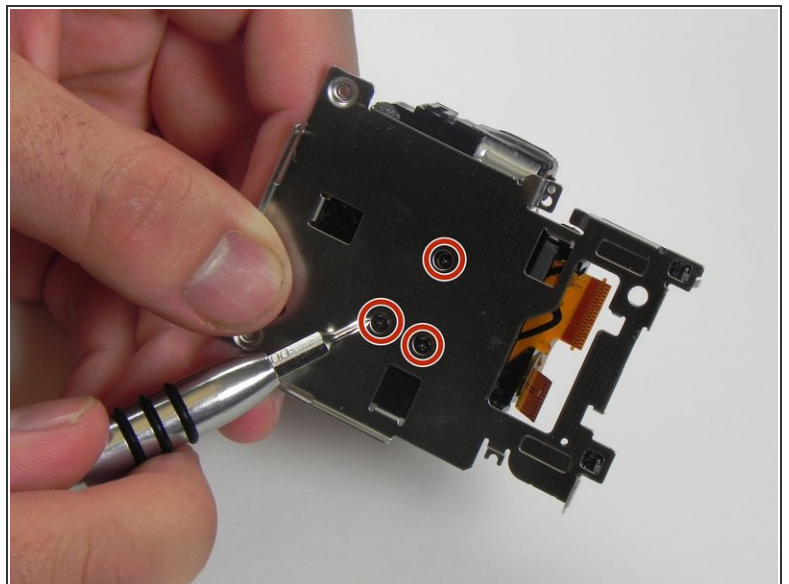
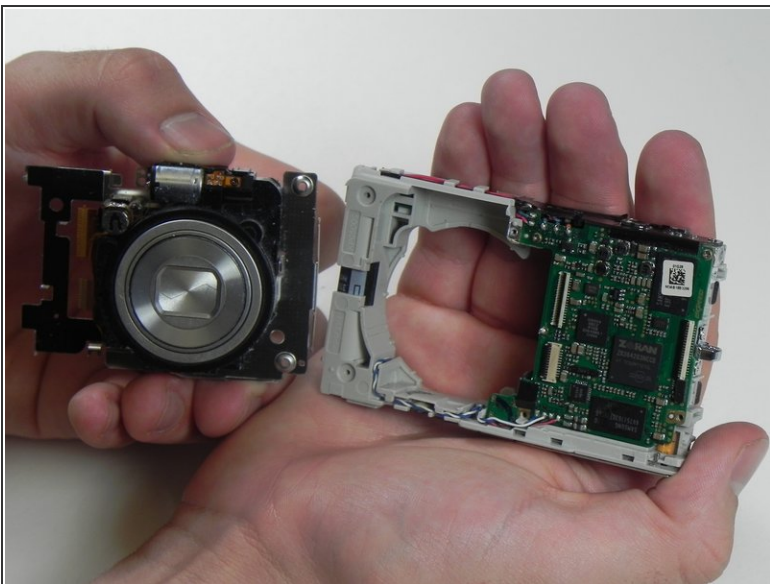
- Lift screen up holding the corners.
- Gently pull to the left to release from ZIF connector. (picture 2)
- Gently pull the orange board to the right. (picture 3)

Step 6



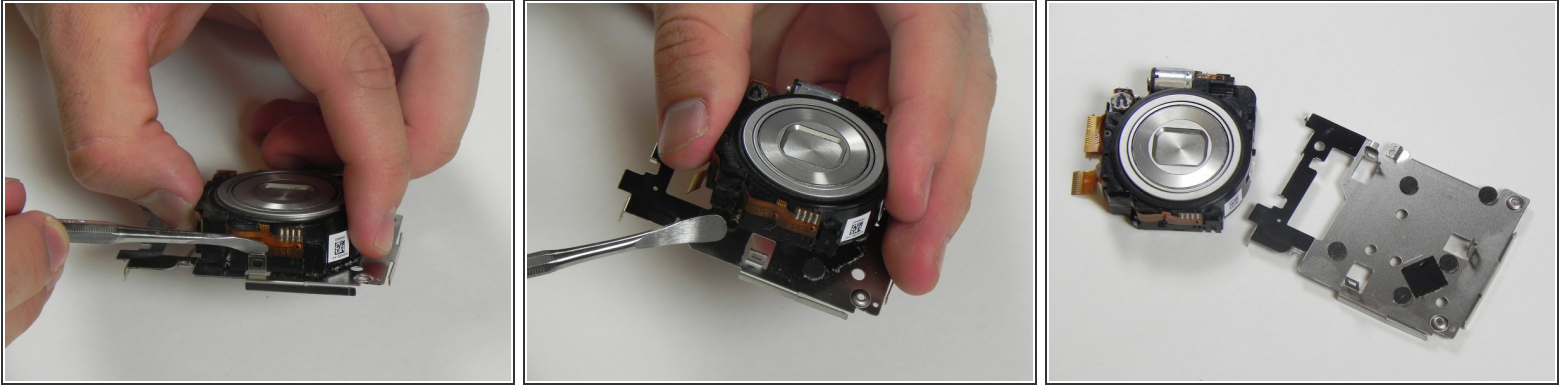
- Remove 4-2.10mm screws using a #000 Phillips screwdriver.
- Gently pull the shutter up. (picture 2)

Step 7



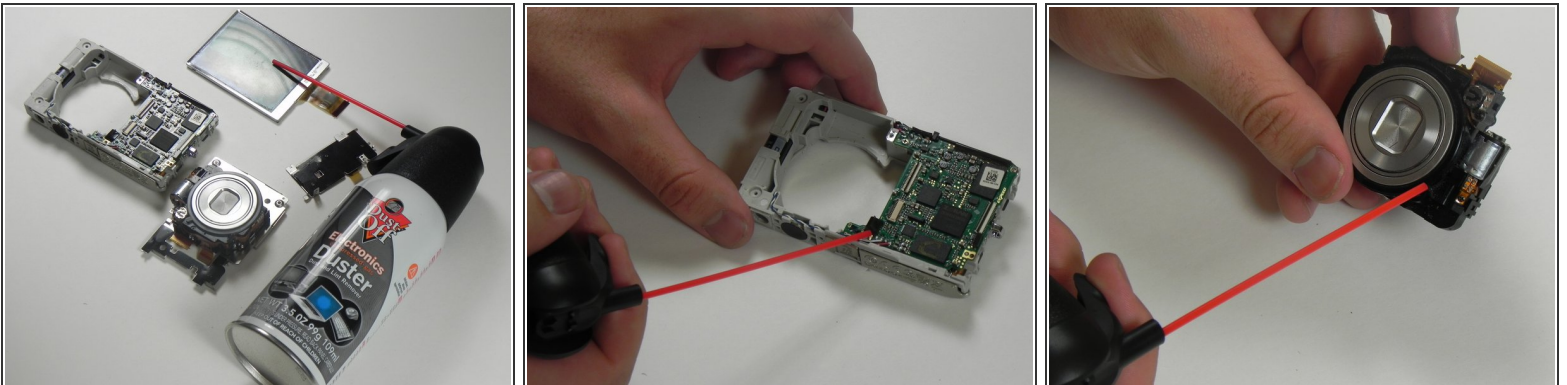
- Lens is now separated from body.
- Remove 3-2.12mm screws using #000 Phillips screwdriver.

Step 8



- Use a nylon or metal spudger to release the lens.
- Repeat step 4 to the opposite side of the lens. (picture 2)
- Lens is now separated from metal.

Step 9



- Once you have all the parts separated, start cleaning them with an air compressor bottle. (as shown)
- Using the provided straw, start spraying the parts. (pictures 2 and 3)

To reassemble your device, follow these instructions in reverse order.