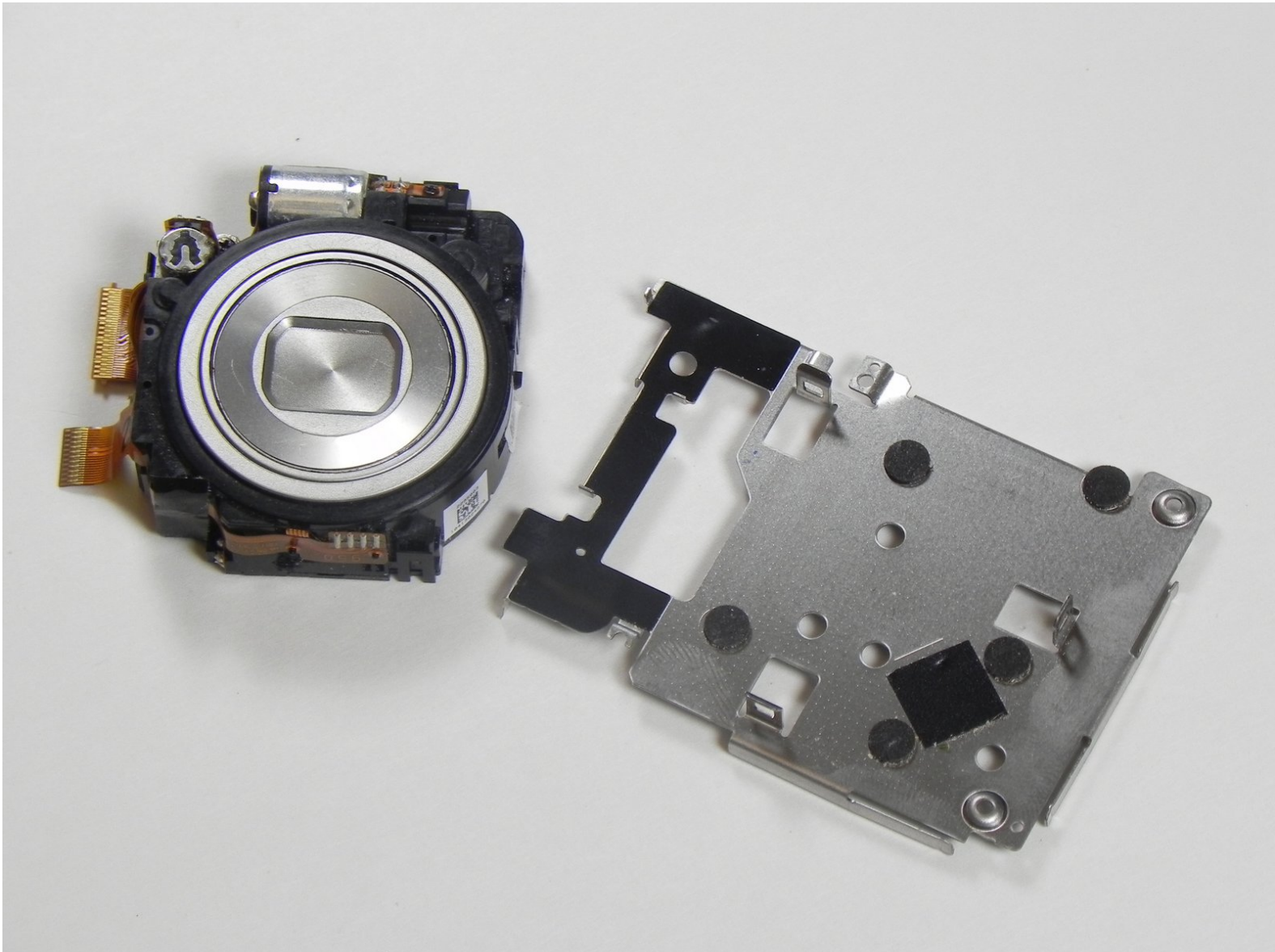




Nikon Coolpix S3100 Camera Lens Replacement

This guide help you accomplish to replace the camera lens in case it gets broken or shattered.

Written By: Jorge



INTRODUCTION

If your shutter lens does not seem to operate, these guides will help you find the problem.



TOOLS:

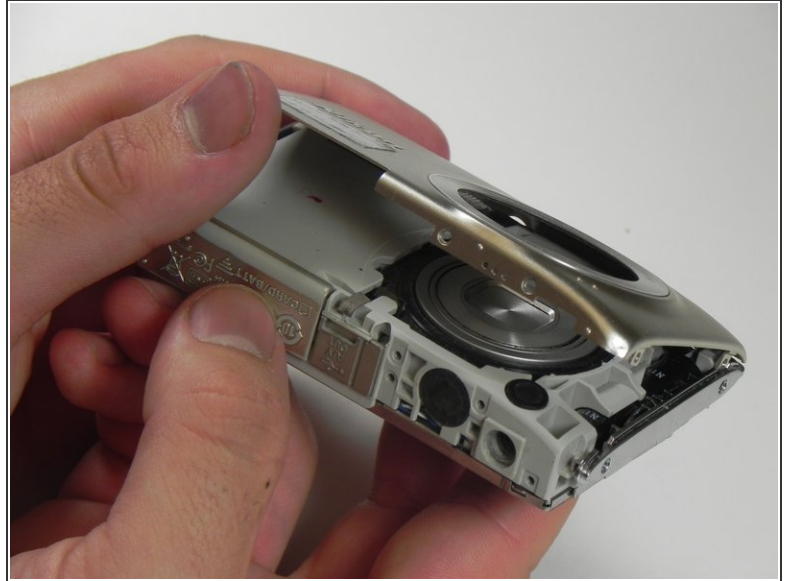
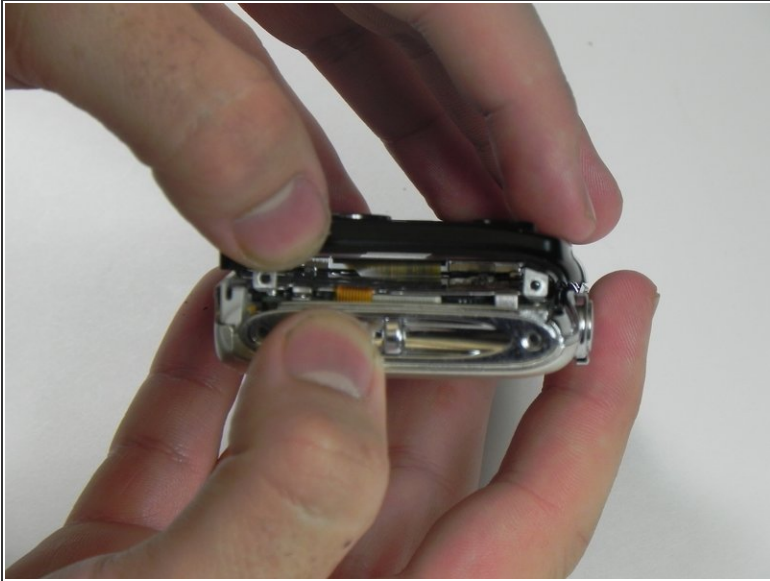
- [Phillips #000 Screwdriver](#) (1)
 - [Metal Spudger](#) (1)
 - [Spudger](#) (1)
-

Step 1 — Nikon Coolpix S3100 disassembly




- Remove 8-2.46 mm screws from both sides and bottom of camera using a #000 Phillips screwdriver.
 - Remove 2 screws from left side. (picture 1)
 - Remove 4 screws from bottom. (picture 2)
 - Remove 2 screws from right side. (picture 3)

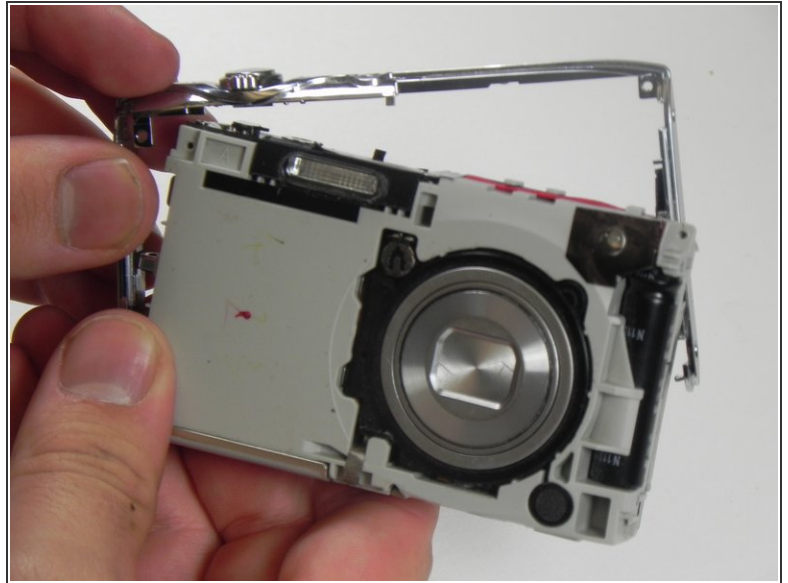
Step 2



- Remove black cover pulling up with left thumb. Hold silver cover with right thumb.
- Remove silver cover lifting up with left thumb. Hold the camera with right thumb.

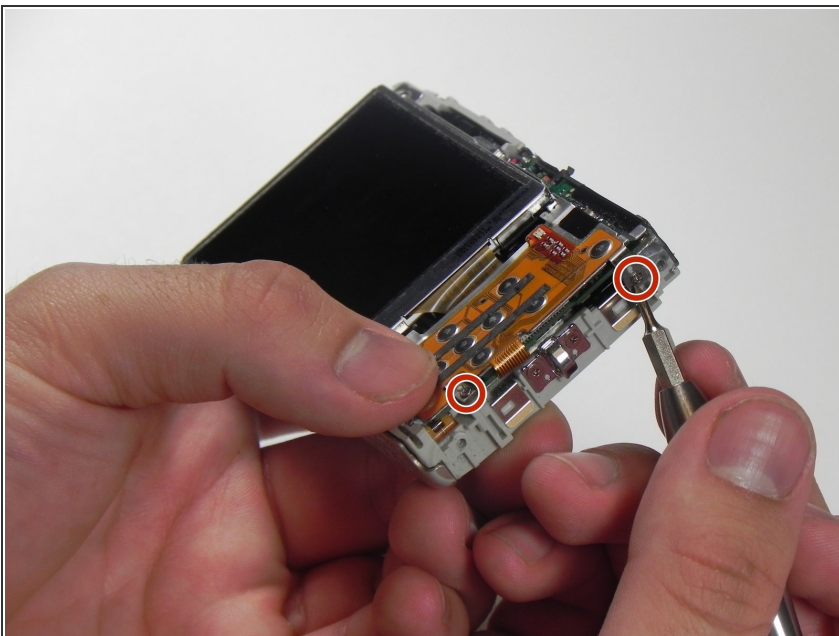
 Once internal circuit board is exposed, the red and blue wire terminals at top center can provide a nasty shock from the charged flash capacitor (silver can to left of terminals). BE CAREFUL!

Step 3



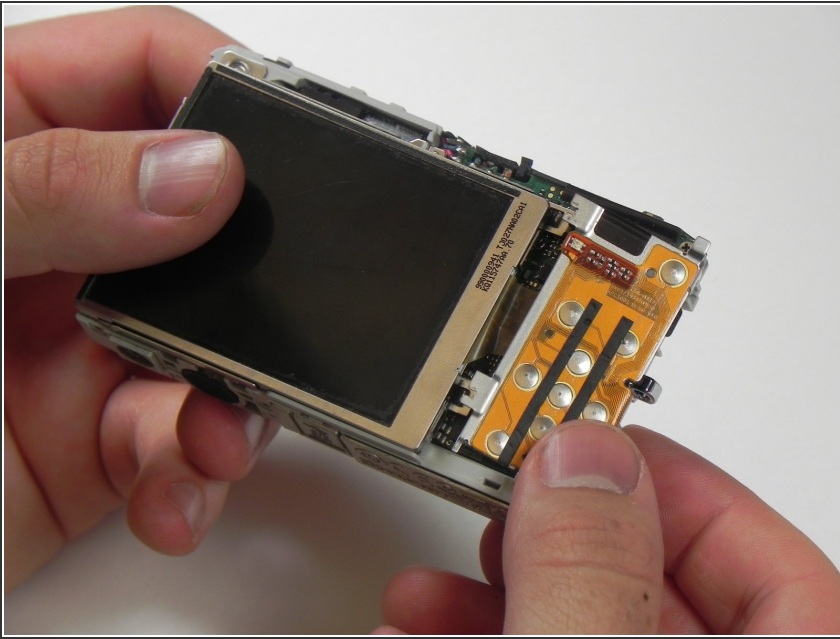
- Remove 2-2.10mm screws in the front of the camera using a #000 Phillips screwdriver.
 - Remove the two screws.
- Gently pull up to detach the frame. (picture 2)

Step 4 — LCD Screen



- Remove 2-2.10mm screws using a #000 Phillips screwdriver.

Step 5



- Gently pull the orange board to the right.

Step 6



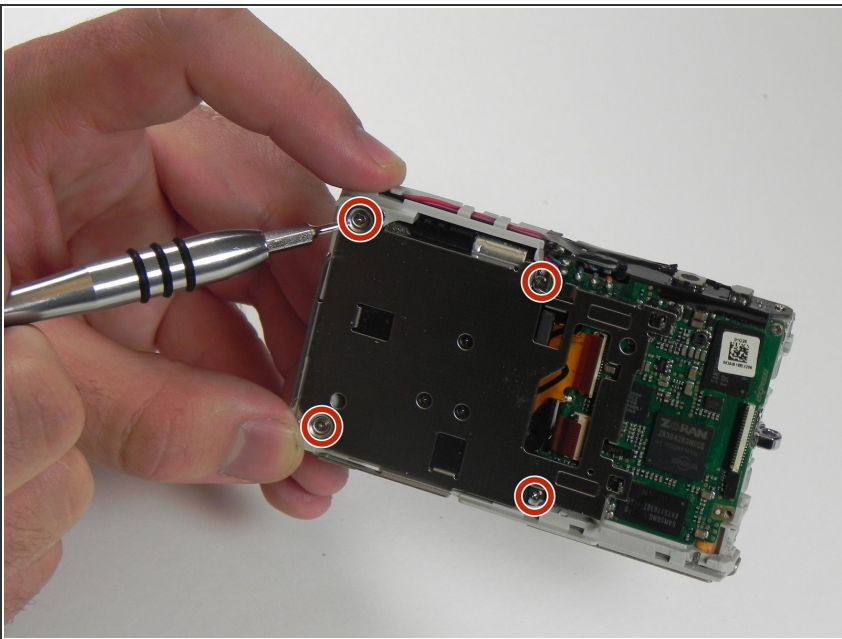
- Lift screen up holding both corners.

Step 7



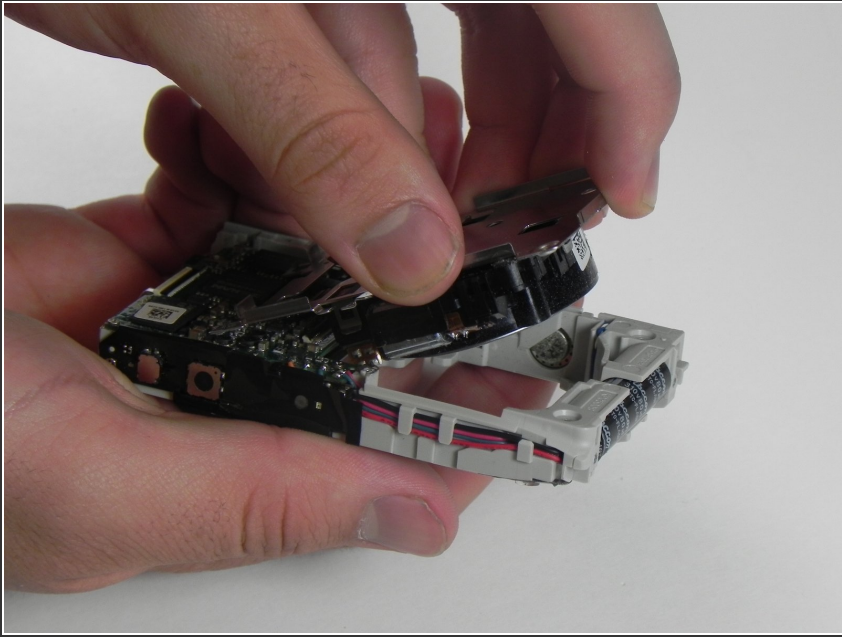
- Gently pull to the left to release from ZIF connector.

Step 8 — Lens



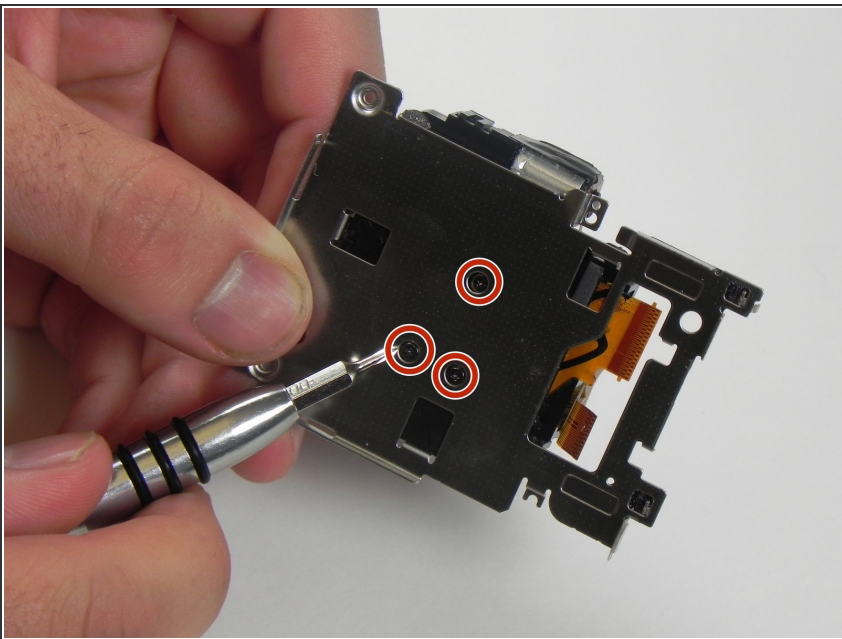
- Remove 4-2.10mm screws using a #000 Phillips screwdriver.

Step 9



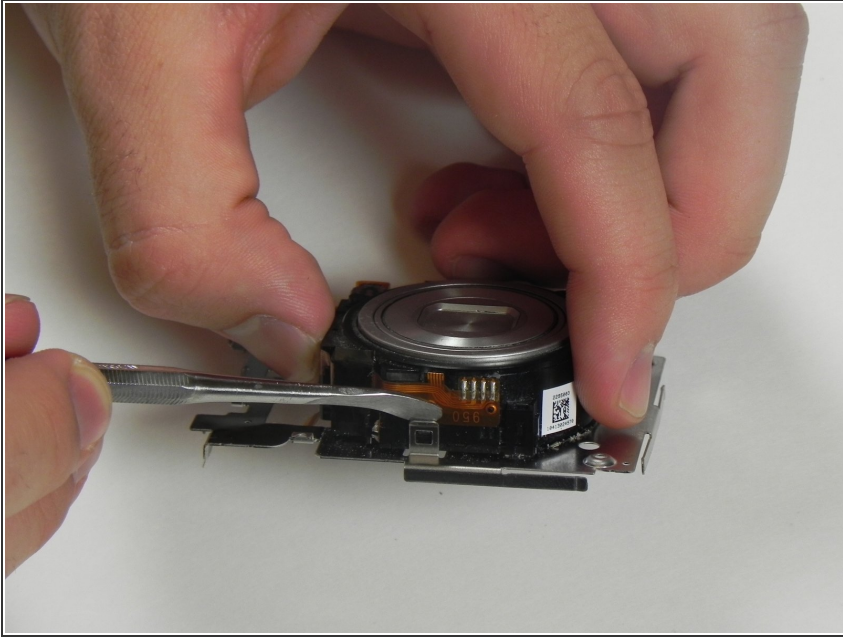
- Gently pull the shutter up.

Step 10



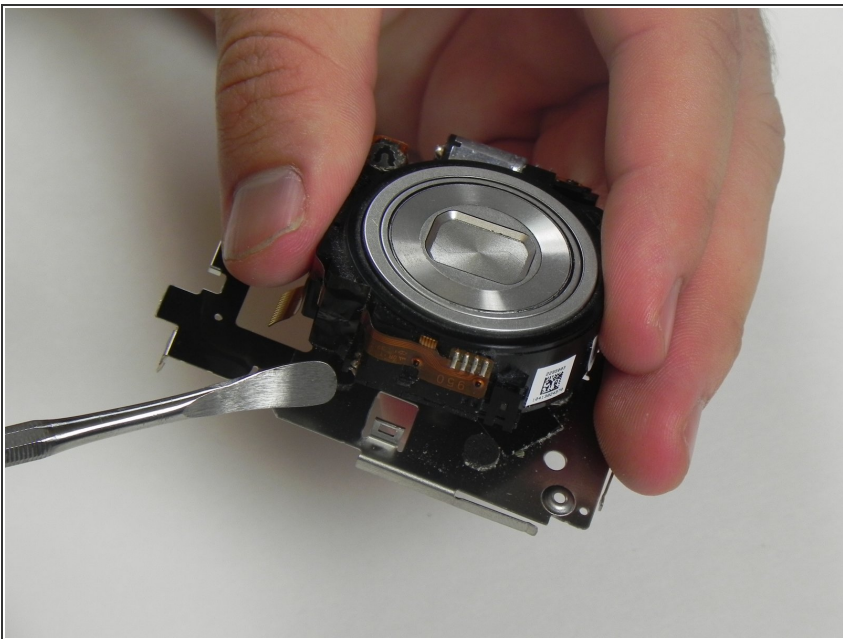
- Remove 3-2.12mm screws using #000 Phillips screwdriver.

Step 11



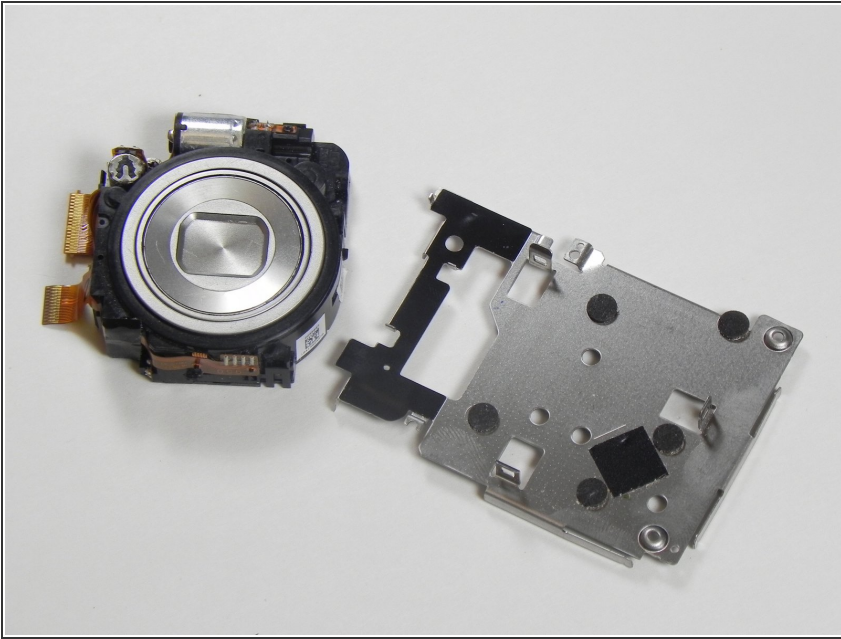
- Use a nylon or metal spudger to release the lens.

Step 12



- Repeat step 4 to the opposite side of the lens.

Step 13



- The lens is now separated.

To reassemble your device, follow these instructions in reverse order.