



Nikon Coolpix S33 Battery and SD Card Replacement

This will show you how to change and replace the battery and where to insert the SD Card for your Coolpix S33 camera.

Written By: Anthony Jeffrey



INTRODUCTION

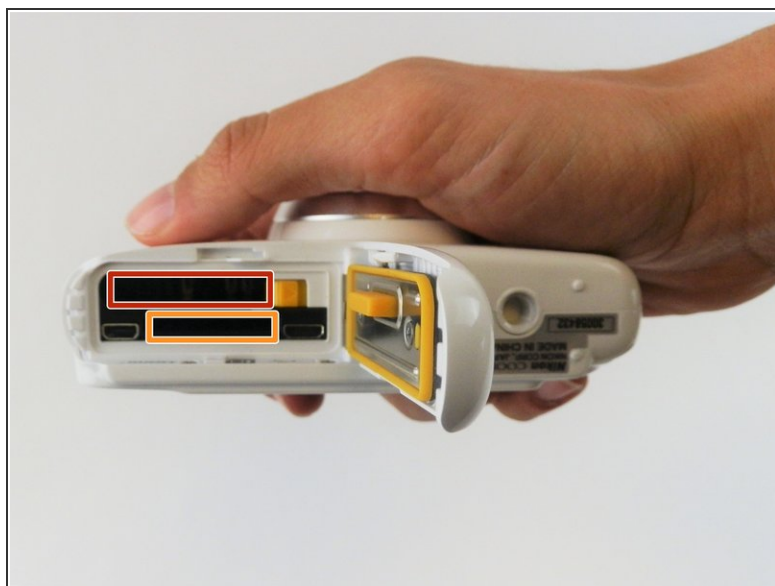
This guide is a walk through on how to replace/install your battery and/or SD card for your camera.



PARTS:

- [Nikon Coolpix S33 Battery](#) (1)
 - [Nikon Coolpix S33 SD Card](#) (1)
-

Step 1 — Battery and SD Card



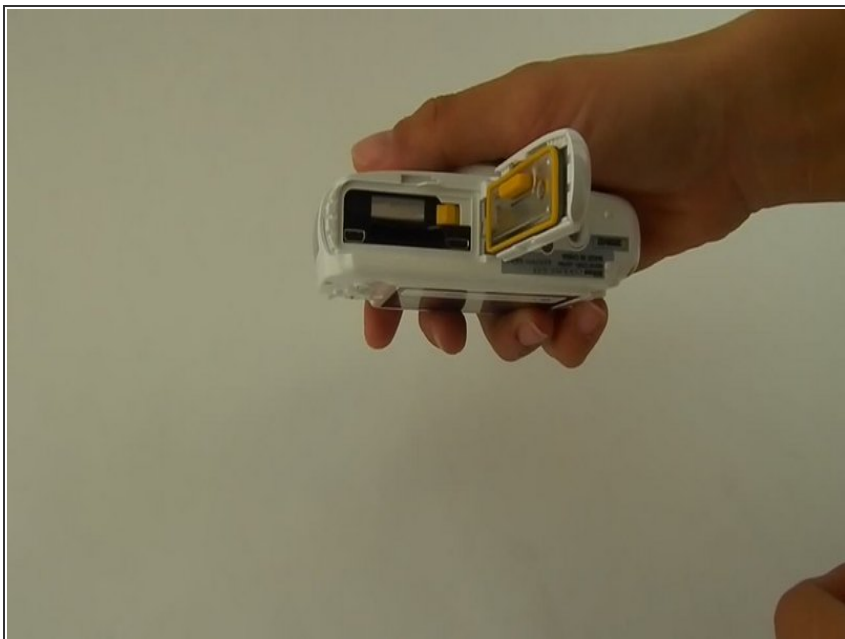
- Make sure that your camera is turned off before beginning any replacement of parts.
- Flip the camera over to the Battery/SD Card compartment at the bottom right of your camera, located directly under the *Coolpix* logo.
- This slot is for the camera's battery.
- This slot is for the camera's SD card.

Step 2



- Open up the compartment of the camera as shown in the images.
- ⓘ No tools are necessary for this replacement.

Step 3



- Using your finger, push on the latch in the direction of the arrow to release the battery from the locking mechanism holding it in your camera.
- Push down the SD card to release it from the locking mechanism in your camera.
- Once the Battery and SD Card are loose, you can pull them out of their respective slots.

To reassemble your device, follow these instructions in reverse order.