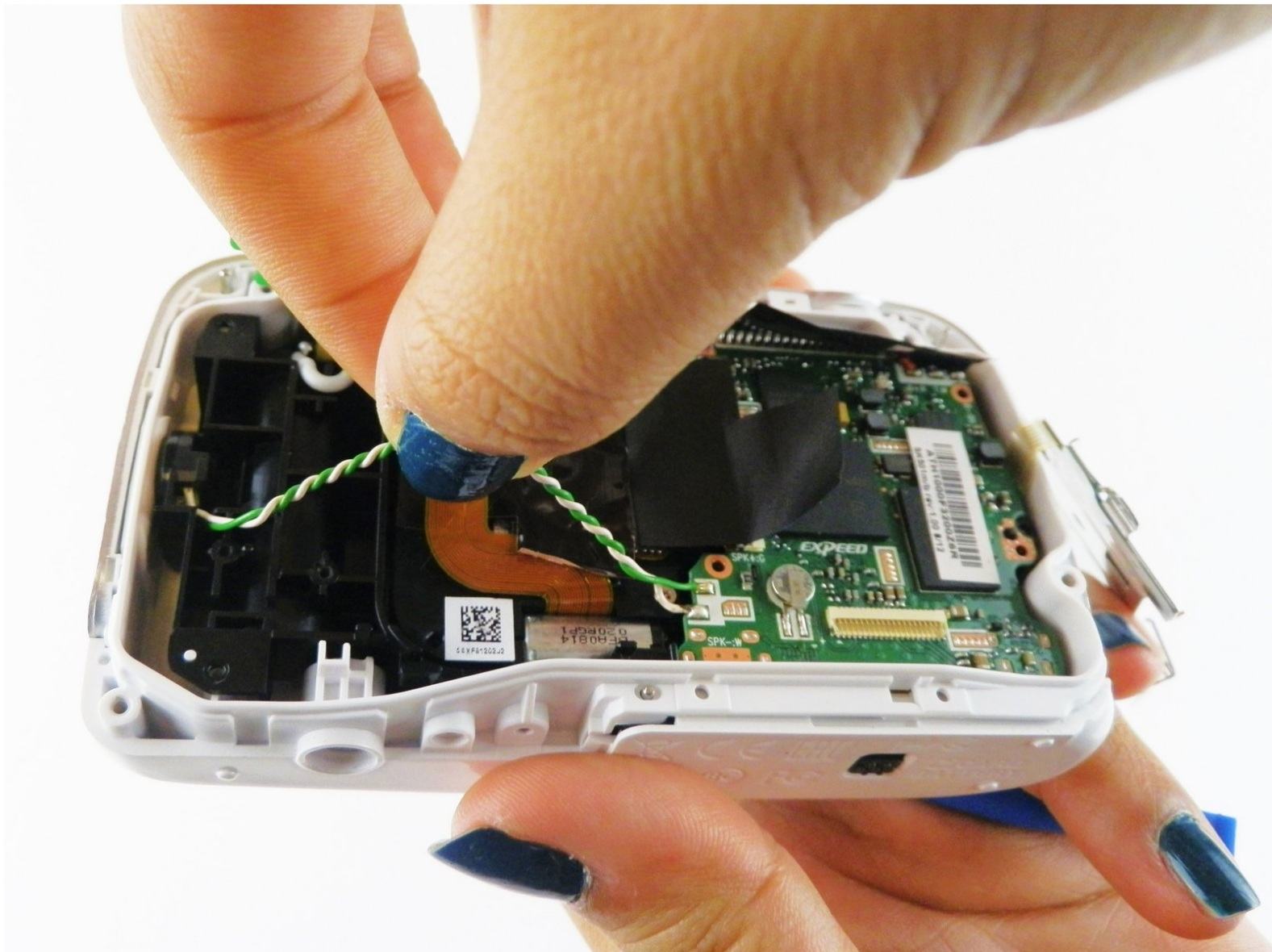




# Nikon Coolpix S33 Speaker Replacement

This guide will show you how to replace the speaker in your Nikon Coolpix S33 camera.

Written By: Maria Frias



## INTRODUCTION

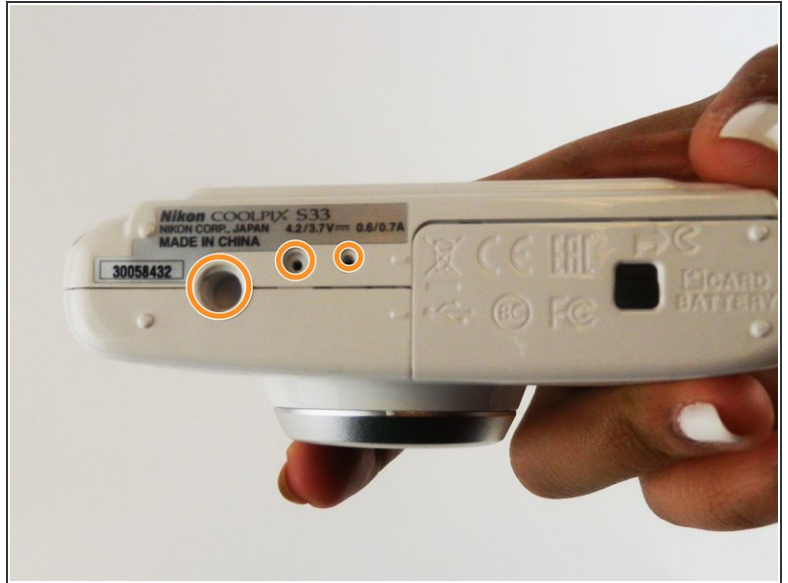
If the sound in your camera is distorted or there is no sound in videos, the speaker may need to be replaced. This guide will show how to remove the speaker and insert a new one.



### TOOLS:

- [Phillips #00 Screwdriver](#) (1)
  - [iFixit Opening Tools](#) (1)
  - [T5 Torx Screwdriver](#) (1)
-

## Step 1 — Back Cover



 Remove battery before initiating this step to avoid the possibility of electric shock.

- Remove all four T5 Torx screws from the exterior of the camera.
- Remove all three T5 Torx screws located at the bottom of the camera next to the battery compartment.

## Step 2



- Remove the two screws located above the HDMI and USB logos that are inside the camera's battery compartment using a JIS000 screwdriver.




## Step 3



- Using a plastic opening tool, gently remove the back cover from the camera.

## Step 4 — LCD



 Be sure to have followed the steps to remove the Back Cover of your camera before beginning to replace

the LCD Screen. This guide will cover just the replacement of the LCD Screen.

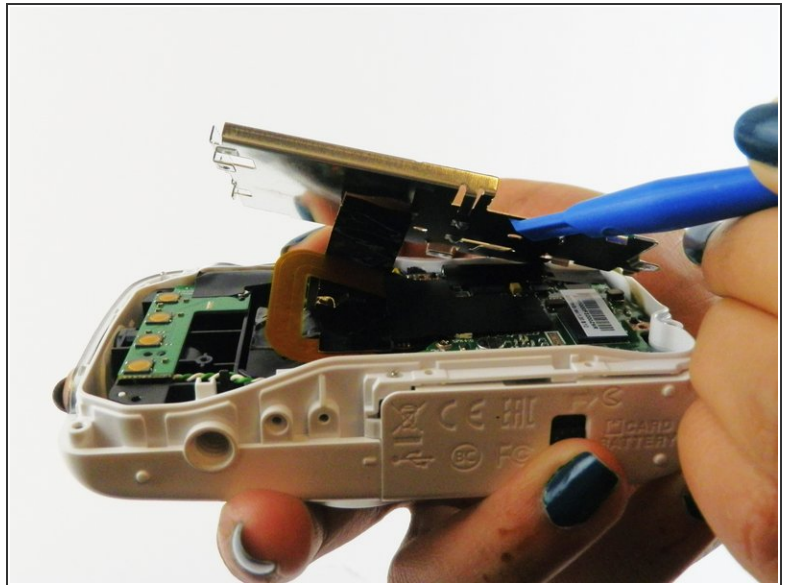
- Using a plastic opening tool, pry the LCD screen out of its slot inside of the camera.

## Step 5



- Before pulling the LCD Screen out of the camera, you will need to disconnect the ribbon connector that attaches the screen to the camera.
- Gently pull the ribbon connector out of its slot. You should be able to remove it without the need of any tools.

## Step 6 — Speaker



- Remove the screws. Gently pry off the LCD holder using a plastic opening tool.

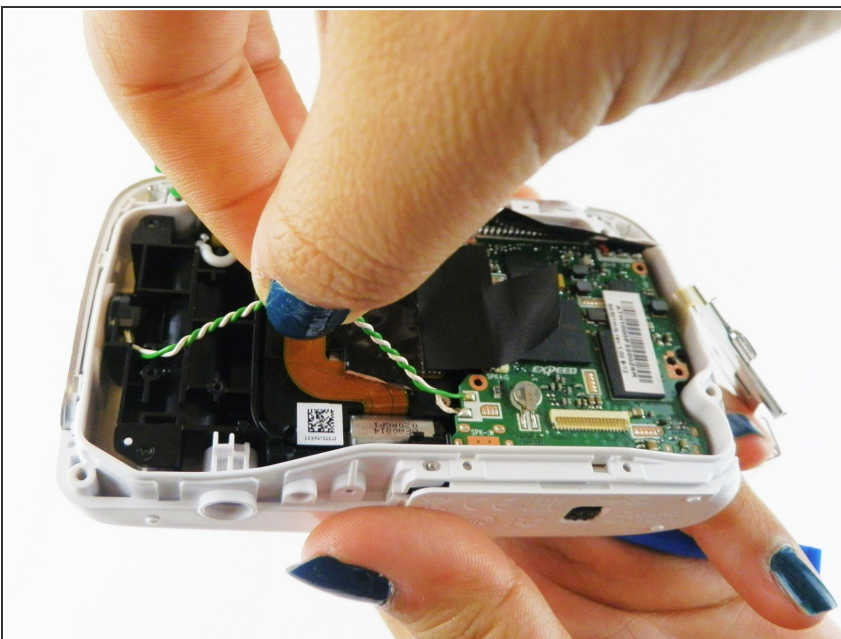


## Step 7



- After removing the LCD holder, you can begin the process of removing the speaker from the camera.
- Remove the 15" Phillips screw using a PH#00 screwdriver.
- Gently pry off the green flap to get access to the speaker port.

## Step 8



- Gently pull out the speaker using the green and white wires.
- Disconnect these wires from the motherboard.

To reassemble your device, follow these instructions in reverse order.