



# Nikon Coolpix S3500 LCD Screen Replacement

Nikon S3500 Disassembly and how to replace your existing damaged broken LCD.

Written By: Sales Cameraparts4you



[WWW.CAMERAPARTS4YOU.COM](http://WWW.CAMERAPARTS4YOU.COM)

# INTRODUCTION

Nikon S3500 Disassembly and how to replace your existing damaged broken LCD.



## TOOLS:

- [Phillips #000 Screwdriver](#) (1)



## PARTS:

- [Nikon S3500 Replacement LCD Display](#) (1)

## Step 1 — Remove Bottom Screws



**i** Make sure to remove the battery - memory card - strap from the unit.

- Remove 2 (4mm) screws from the bottom of the camera.
- Remove 2 (4mm) screws from the bottom side of the camera.

## Step 2 — Remove Side Screws



- Remove 2 (4mm) screws from the right side of the camera.
- Remove 2 (4mm) screws from the left side of the camera.

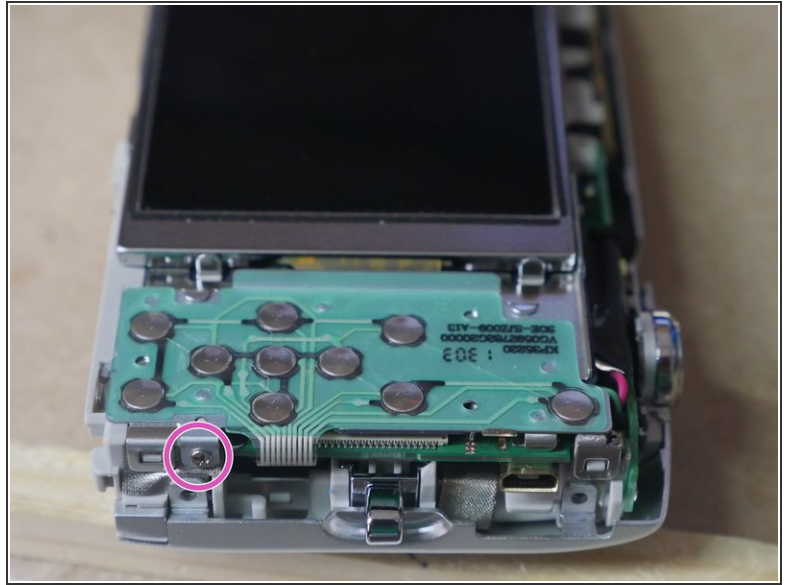
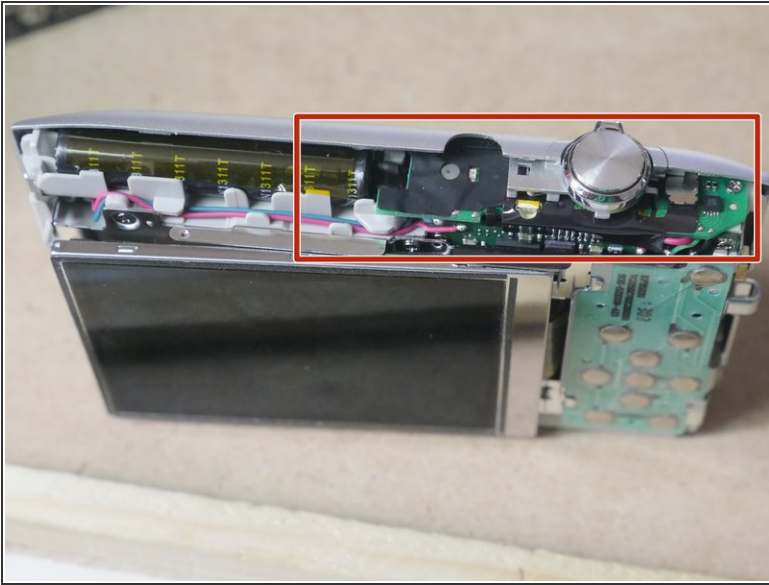
## Step 3 — Remove Rear Cover



- Use a spudger or other plastic tool and carefully work your way around the seam and carefully Pry off the rear case.
- Carefull not to loose the A/V Out cover. Remove it and set it aside.



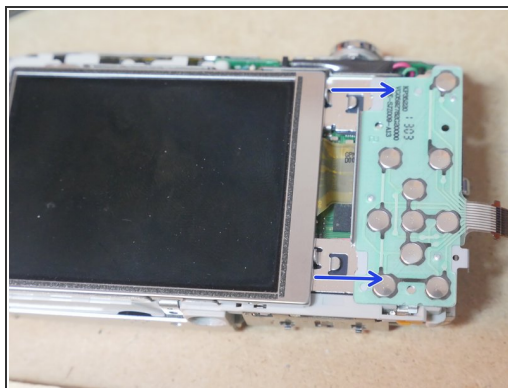
## Step 4



**⚠ Shock Hazard!** Do not touch anywhere along the top panel. Capacitor will still hold a residual charge that will shock you if touched. It is best to discharge the capacitor using the two metal solder joints on the top panel in front of the black tape

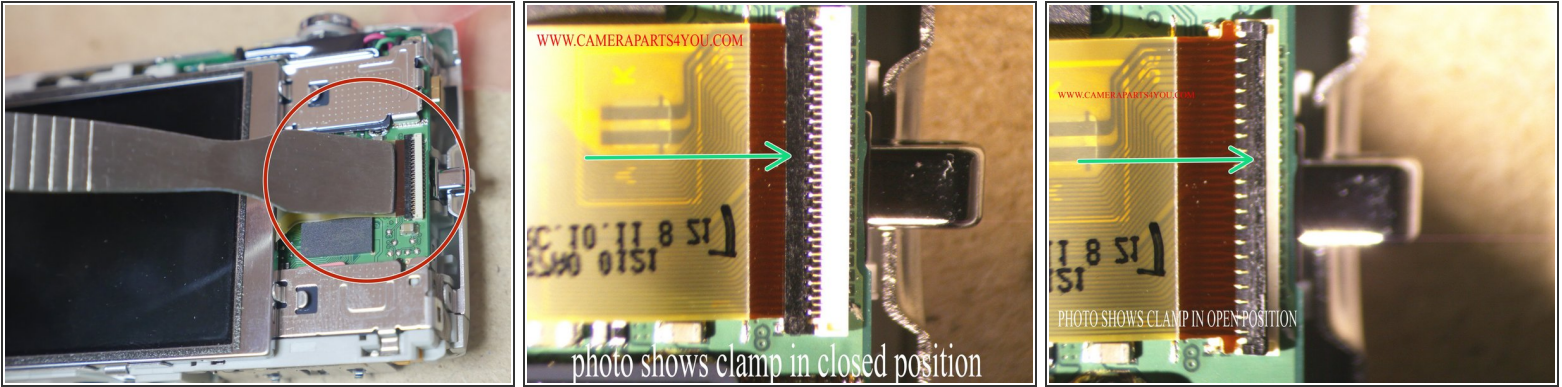
- Remove 1 (3mm) screw from the right side of unit.

## Step 5



- Release Flex Cable from socket. Remove carefully. Just pull it out using tweezers or similar tool.
- Slide the Rear Buttons ASSY to the right and then remove it

## Step 6



- Release the cable clamp using a spudger or similar tool.. or just use your fingernail. Be careful because the clamp breaks easily. Another way to release the cable is to just pull the LCD cable out carefully... this will automatically release the clamp without the risk of damaging the clamp
- If you decide to pull the cable out make sure you hold the flex cable tightly and pull horizontal to its installed position away from the clamp. Do not hold the LCD!!! Hold only the flex cable and hold it tight.
- Example photos of open and closed ziff socket clamps

## Step 7 — Install New Screen



- Remove the LCD and Install the replacement Screen. Reverse the instructions to Assemble the unit

To reassemble your device, follow these instructions in reverse order.