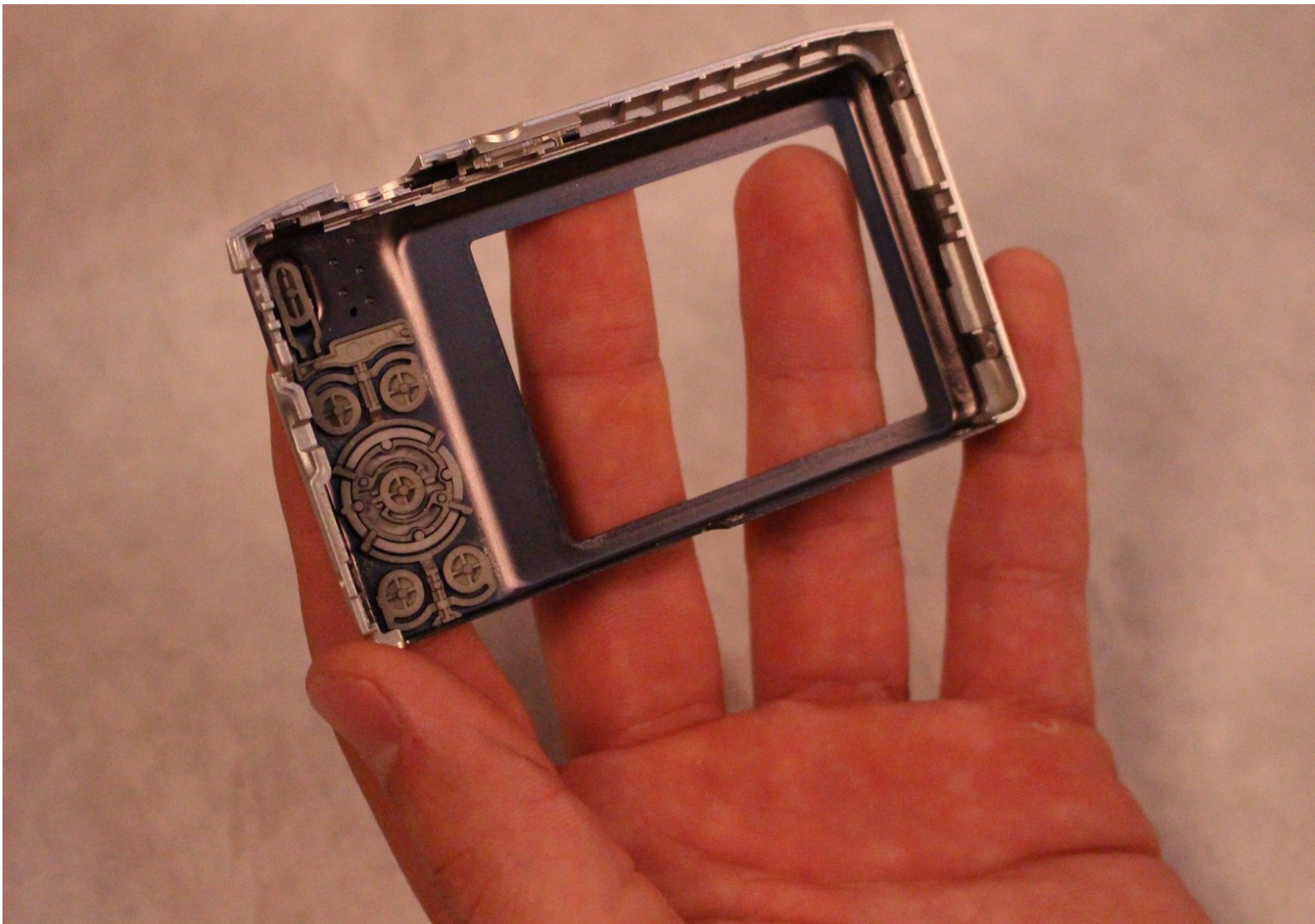




Nikon Coolpix S3500 Rear Buttons Replacement

Are the rear buttons on your device getting stuck or not working at all? If so, this guide will show you how to replace them so that the device operates properly again.

Written By: Jordan Rosemeyer



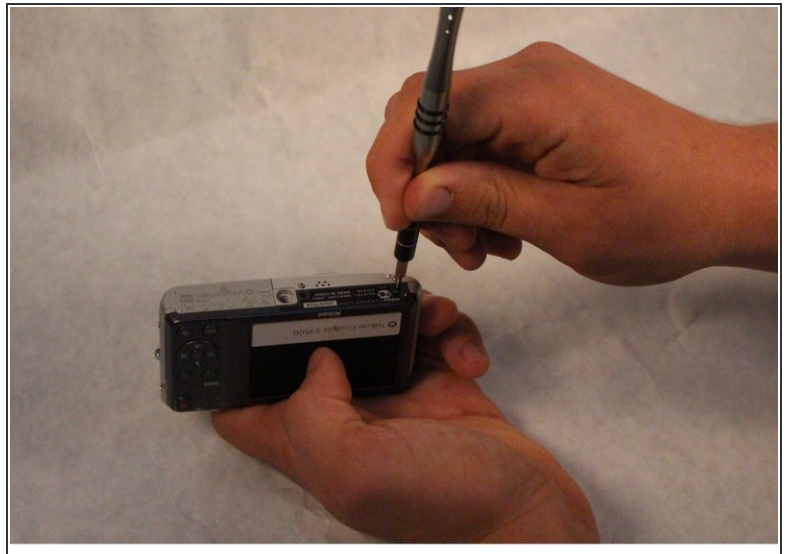
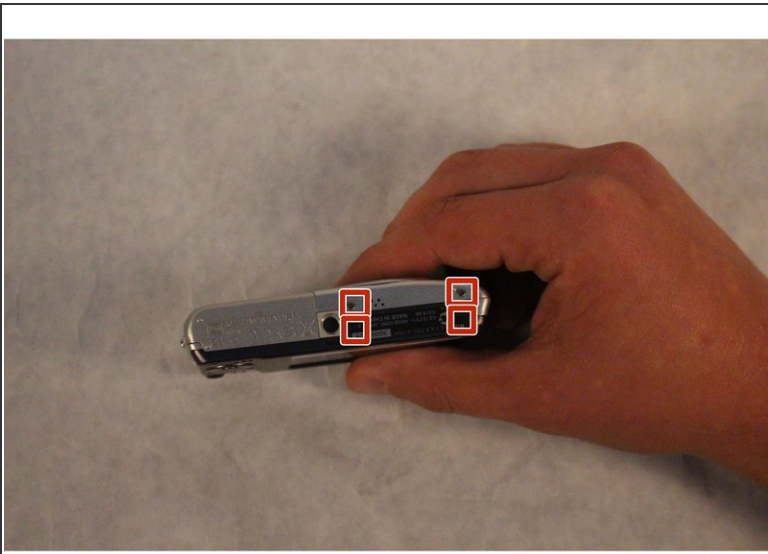
INTRODUCTION

The guide will show you step by step on how to replace the rear buttons of this device.

TOOLS:

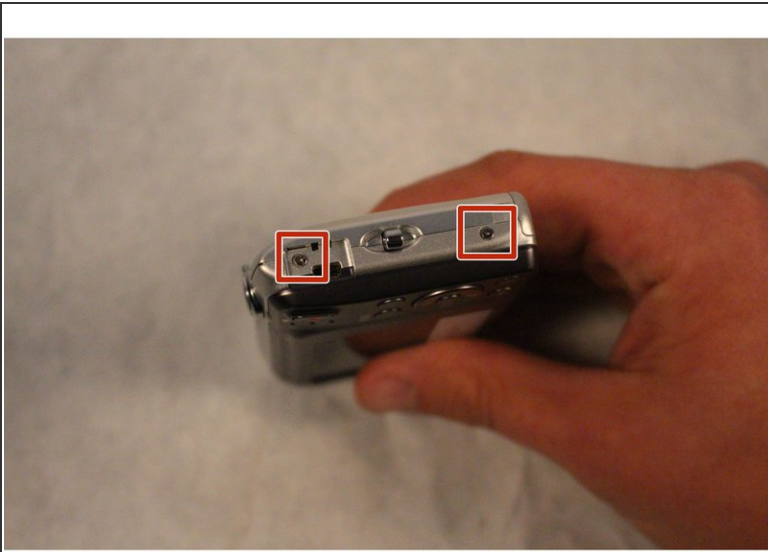
- [iFixit Opening Tools](#) (1)
 - [Phillips #000 Screwdriver](#) (1)
-

Step 1 — Back Panel Disassembly



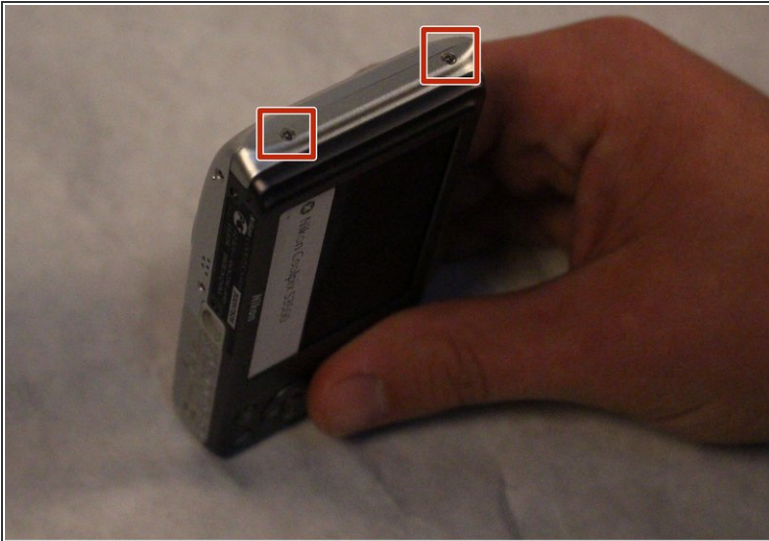
- With the battery door facing upward, take your PH000 screwdriver and remove the 4 mm screws from the bottom of the device.

Step 2



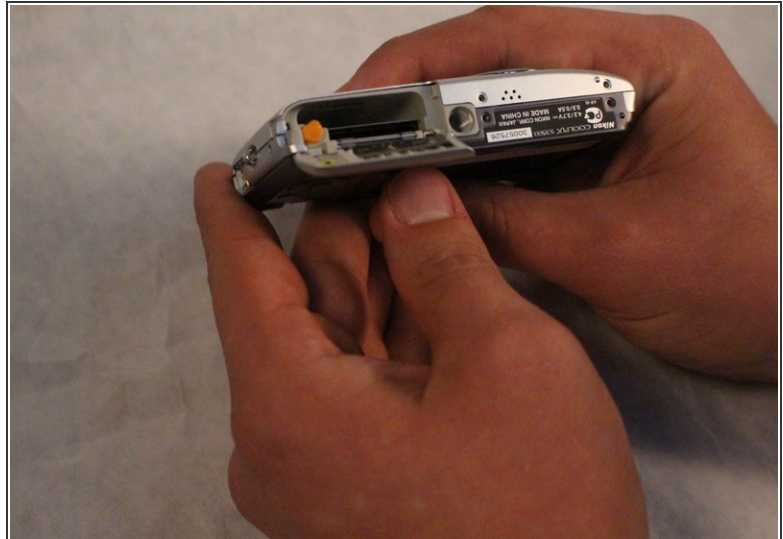
- After removing the screws, rotate the device to where the micro USB port is facing up.
- Now, take your PH000 screwdriver and remove the two 4 mm screws from the device.

Step 3



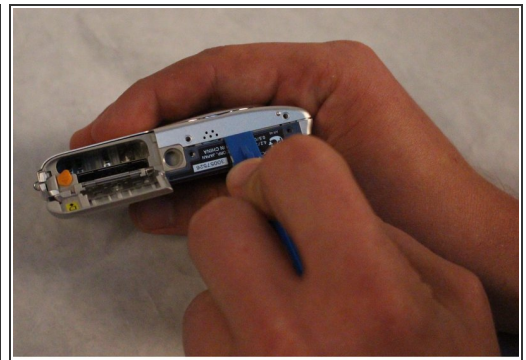
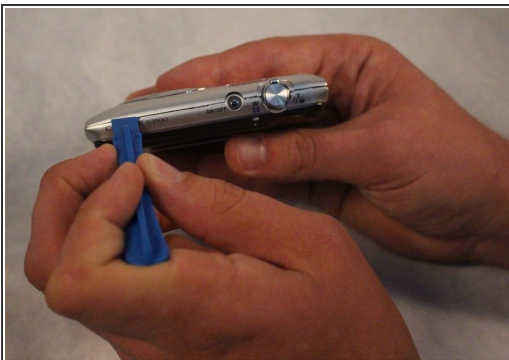
- Rotate the device 180 degrees so that the opposite side of the device is now facing upwards.
- Now, take your PH000 screwdriver and remove the two 4 mm screws from the device.

Step 4



- After all of the screws are removed, rotate the device so that the bottom of the device is now facing upward.
- With your index finger, press down and slide open the memory card/battery door.


Step 5



- Now take the plastic opening tool, and place it in the seam of the device.
- Now, work the tool around the seam of the device until you can safely pry open the device.

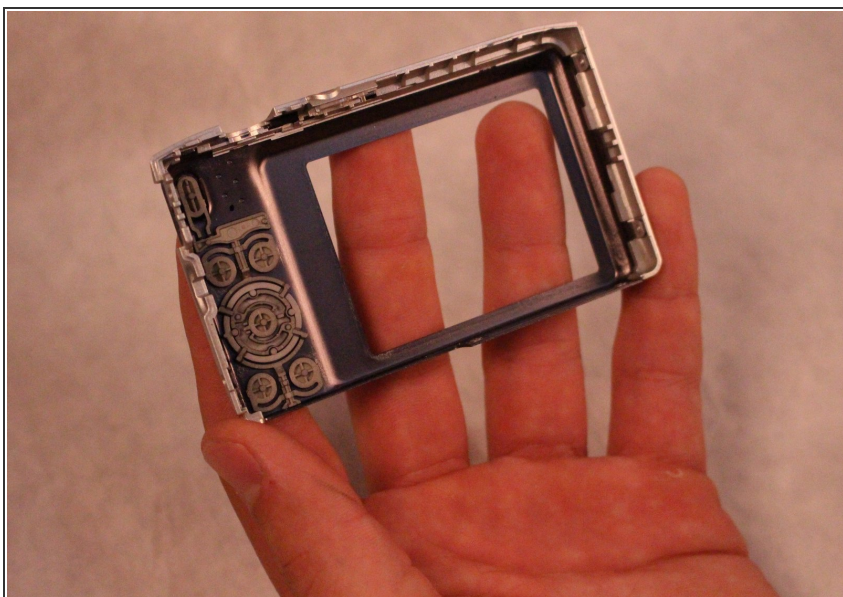
Step 6



 Be careful when removing the back piece of your device.

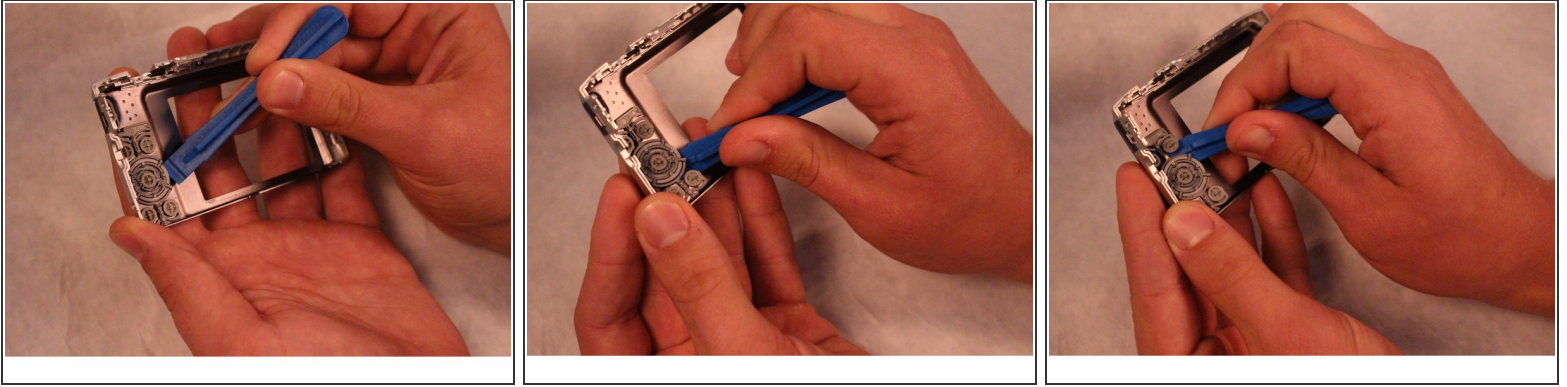
- Using your free hand, finish prying off the back piece of the device.

Step 7 — Rear Buttons



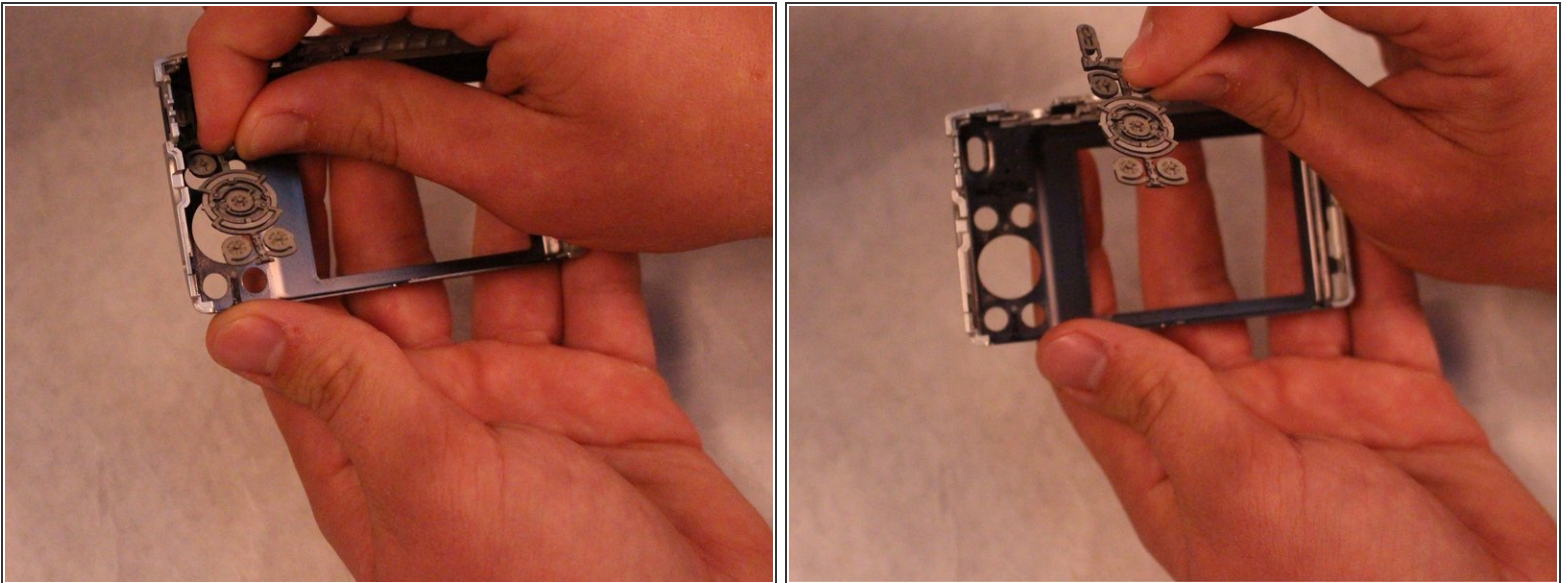
- Take the rear panel of the device in the palm of your hand with the buttons facing downward.

Step 8



- On the back side of the device's rear panel, you will see the plastic brackets that hold the rear function buttons in place.
- With your other hand, take the pry tool and start working your way around the edge of the buttons

Step 9



- Now, take the hand that was previously holding the pry tool, and finish pulling off the rear function buttons.

To reassemble your device, follow these instructions in reverse order.