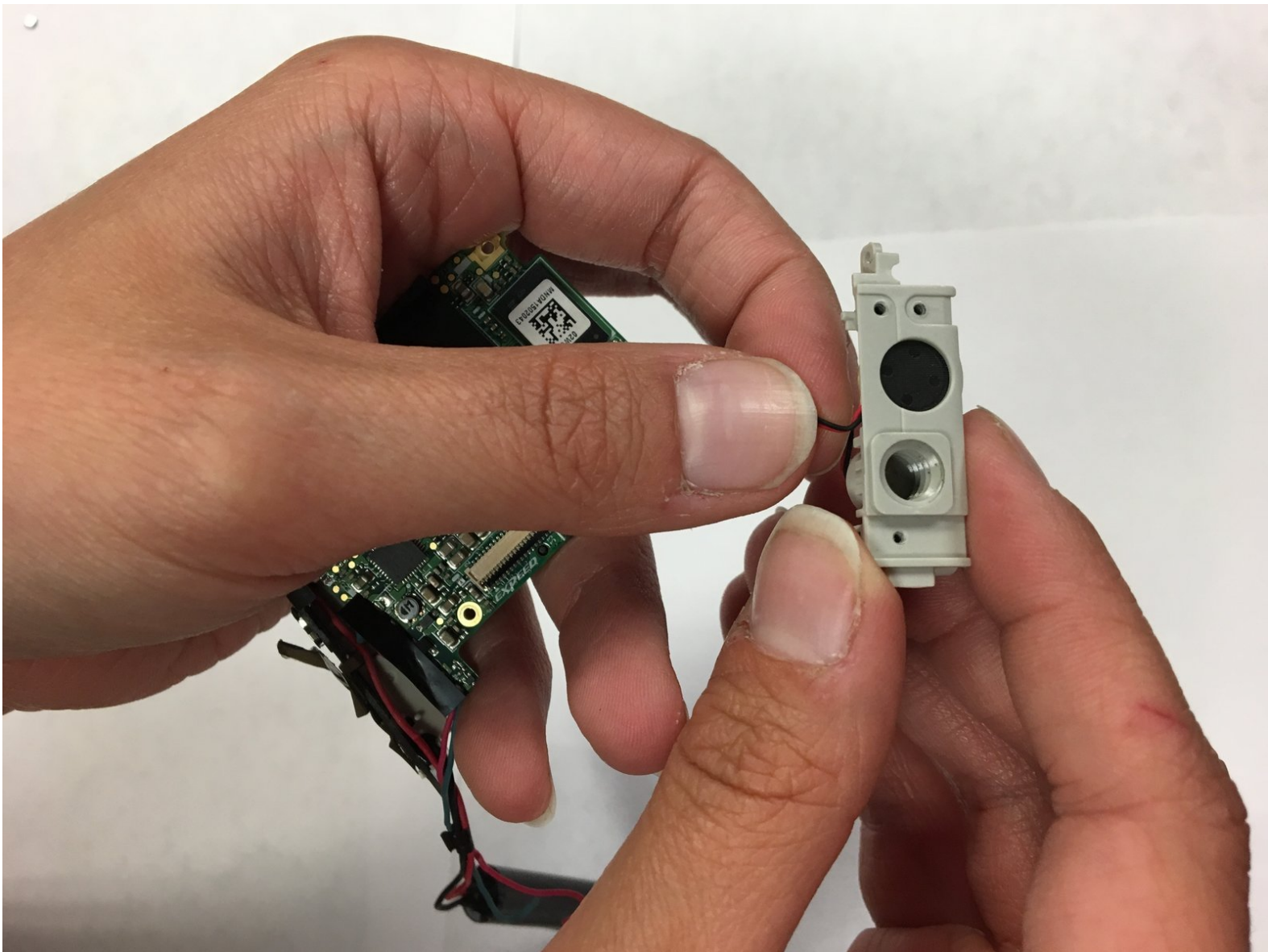




Nikon Coolpix S4000 Speaker Replacement

Replace the broken or faulty speaker on the Nikon Coolpix S4000.

Written By: Matina Newsom



INTRODUCTION

If the camera is not outputting any audio or the sound is muffled, then the speaker might need replacing.



TOOLS:

- [Spudger](#) (1)
 - [Phillips #000 Screwdriver](#) (1)
 - [Soldering Iron](#) (1)
-

Step 1 — Battery



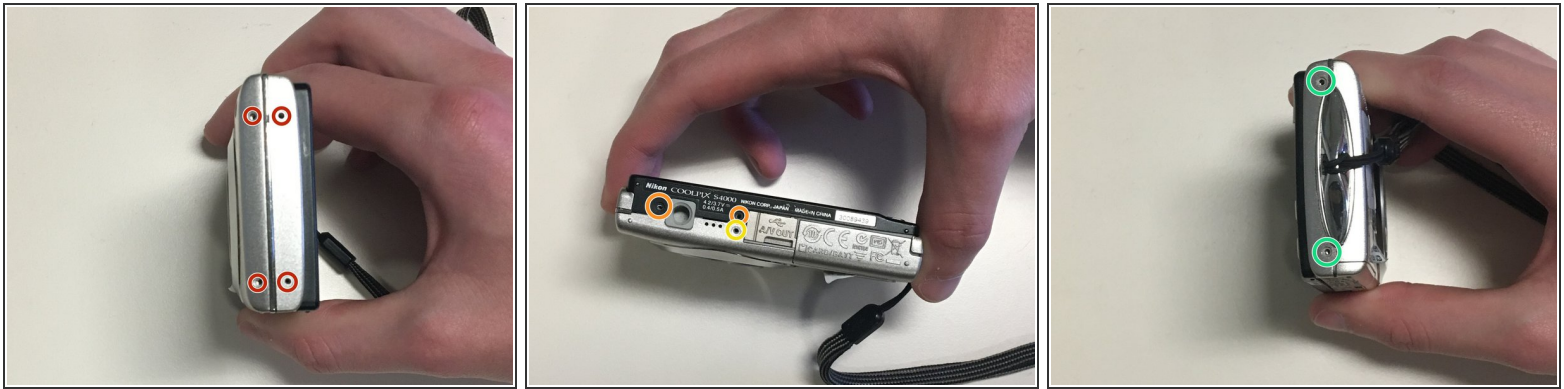
- Slide the battery door open with a finger or thumb and release it so the door opens.

Step 2



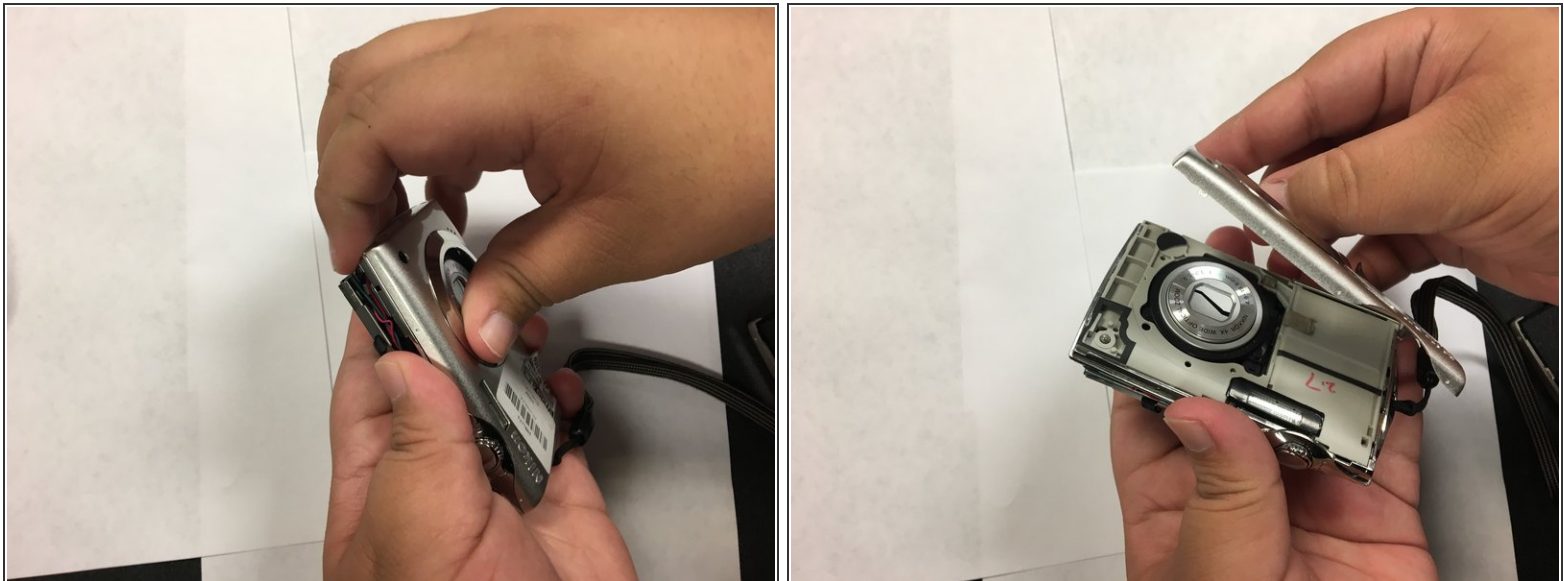
- Push the orange tab back and the battery will pop out.

Step 3 — Casing



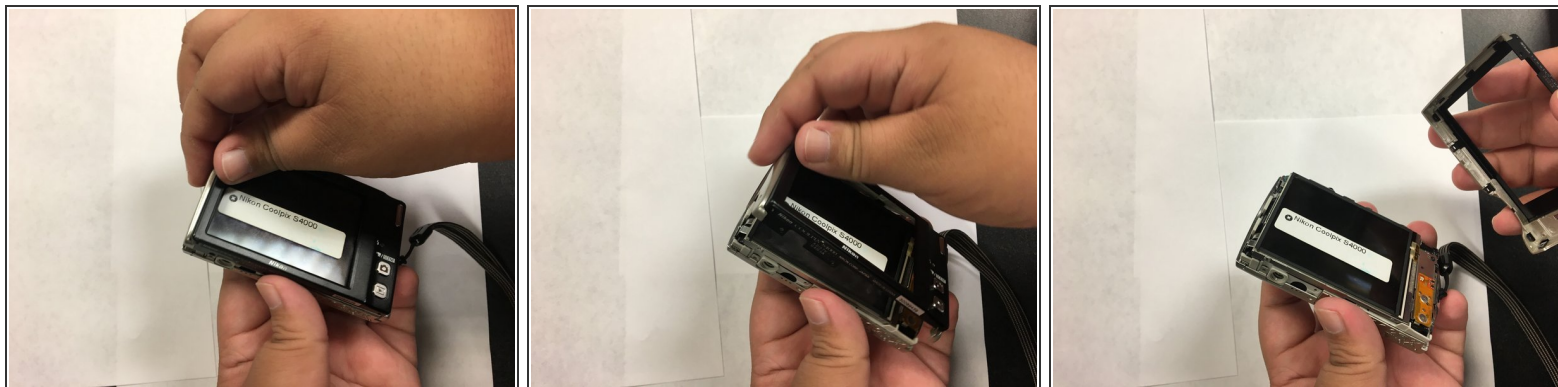
- Remove four 2mm Phillips #000 screws.
- Remove two black 3mm Phillips #000 screws.
- Remove one 4mm Phillips #000 screws.
- Remove two silver 3mm Phillips #000 screws.

Step 4



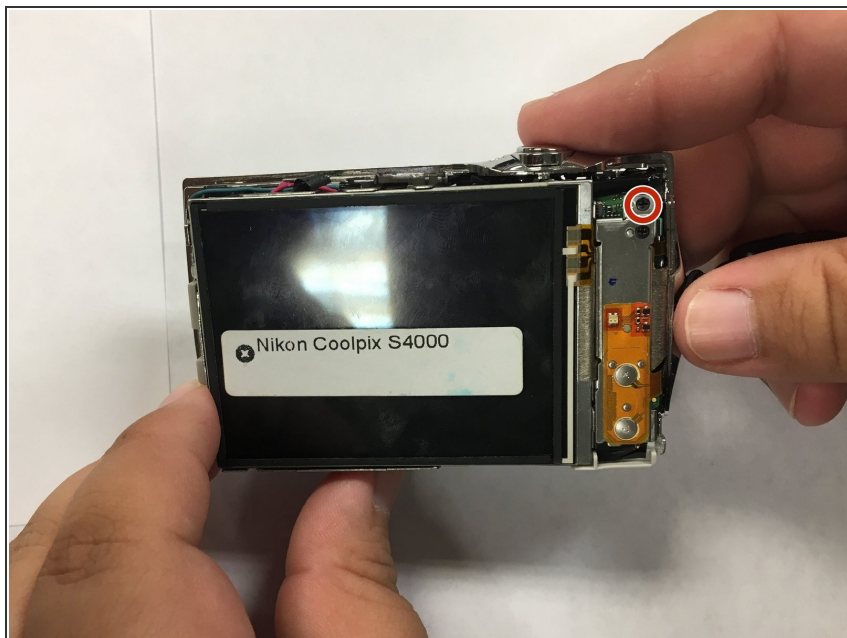
- Use your fingers, or a spudger, to lift up one end of the casing and then pry the two pieces apart.

Step 5



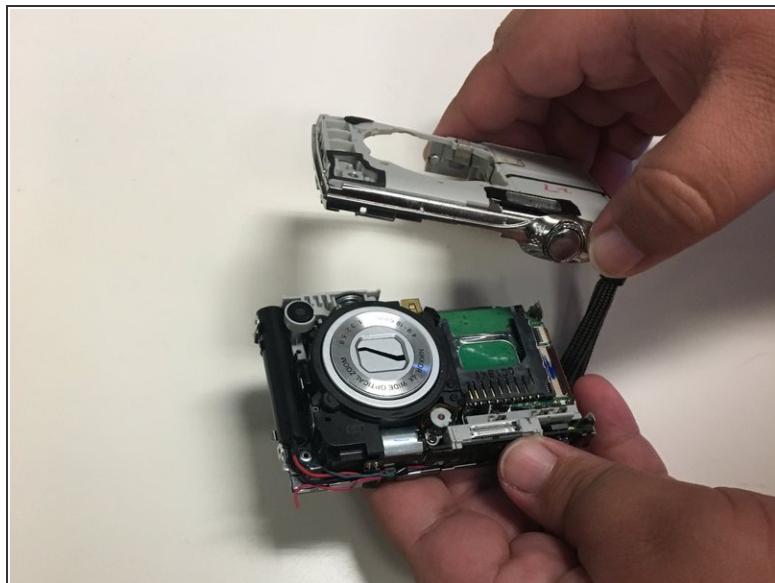
- Turn the camera over.
- Use your fingers, or spudger, to lift one end of the back casing and pry it apart from back of the camera.

Step 6 — Lens Casing



- Remove the single 3mm Phillips #000 screw from the back of the camera.

Step 7



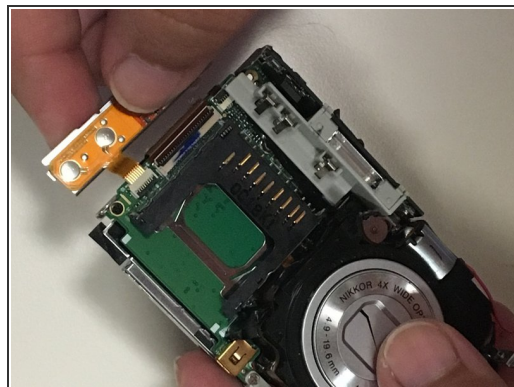
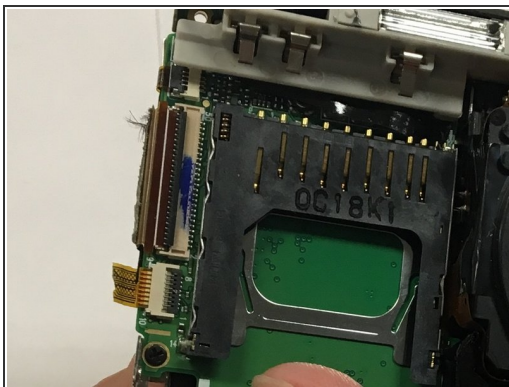
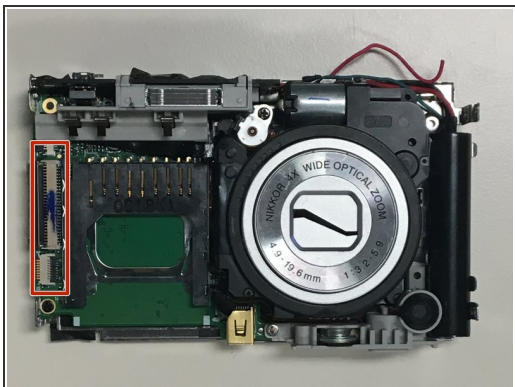
- Turn the camera over and pry the lens casing off by slipping your fingers, or spudger, under the lip of the casing.
 - Desolder the two wires connecting the casing to the motherboard.
- ⚠ Work carefully so that you do not break the soldered wires.

Step 8 — Screen



- Remove the single 2mm Phillips #000 screw.

Step 9



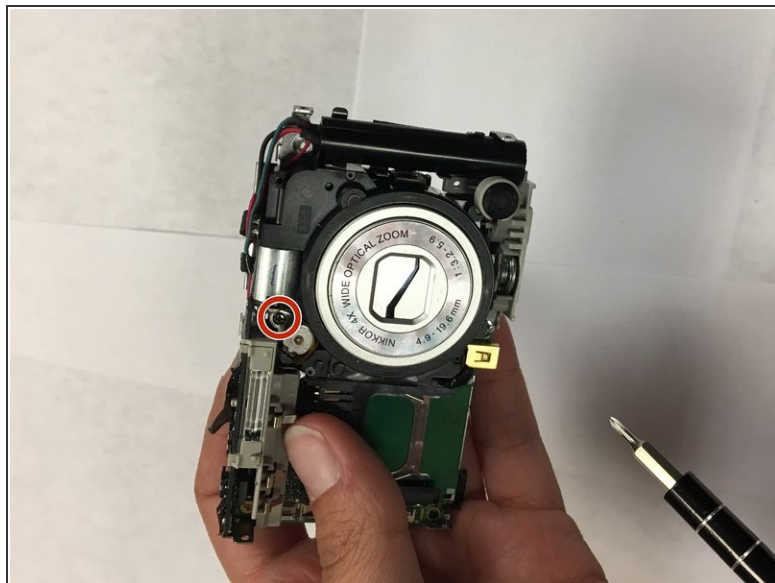
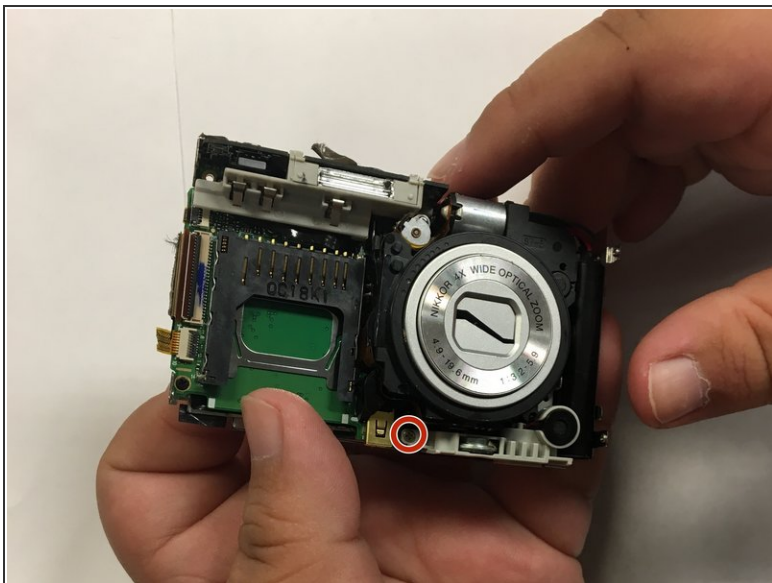
- Use the flat end of a spudger to lift up the black tabs on the ZIF connectors.
- Pull the ribbon cables out of the ZIF connectors.

Step 10



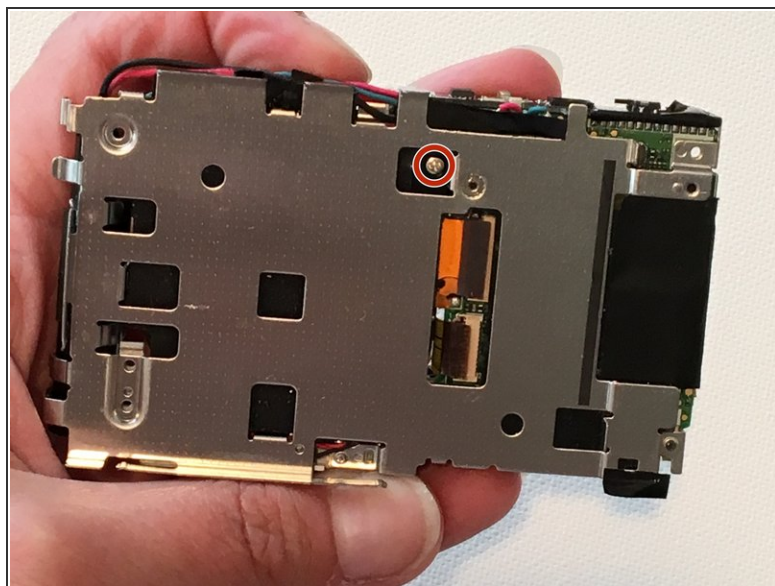
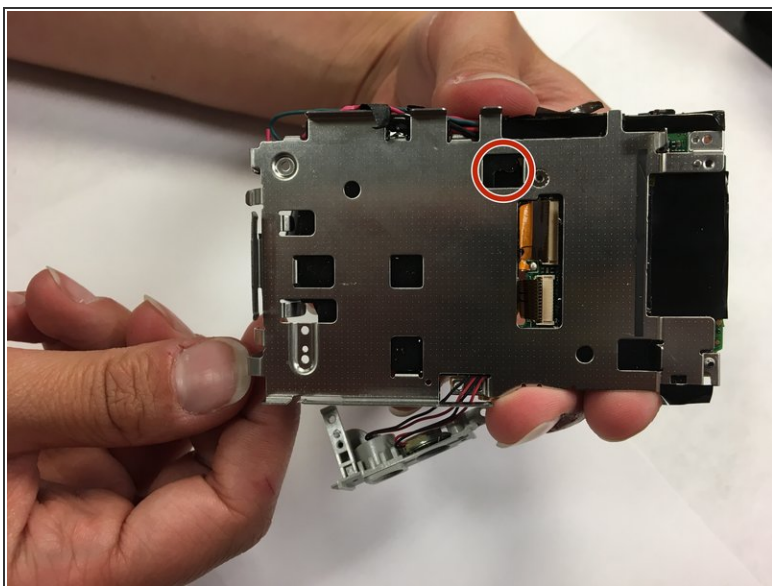
- Grabbing the top left corner of the screen, pull it up until the screen comes completely off.

Step 11 — Lens



- Remove the two 3mm Phillips #000 screws.

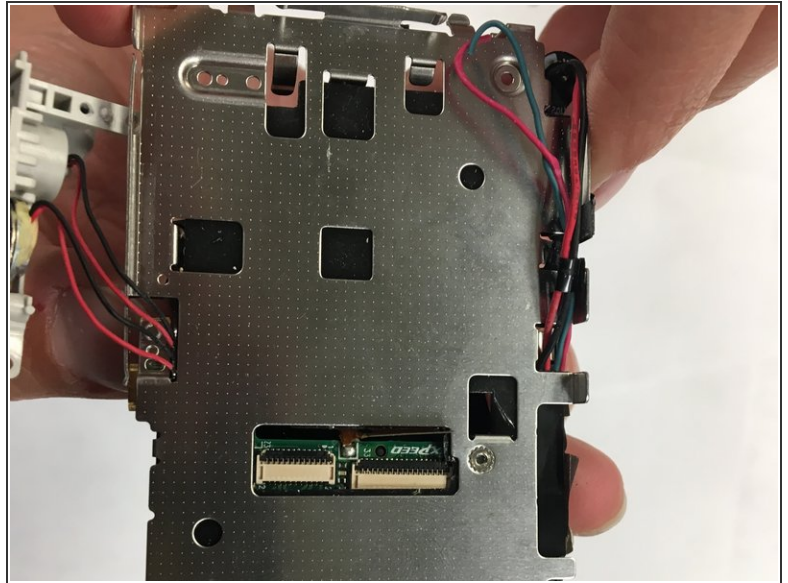
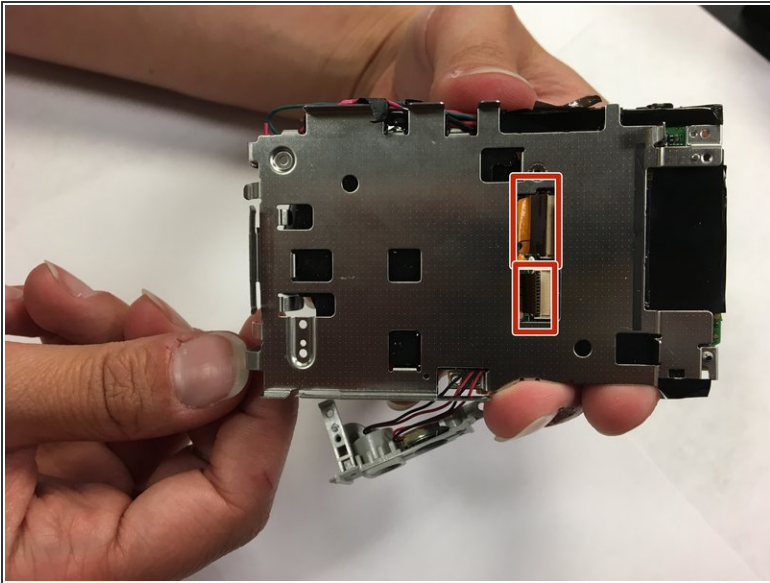
Step 12



- Turn the camera over and remove a single 4mm Phillips #000 screw.

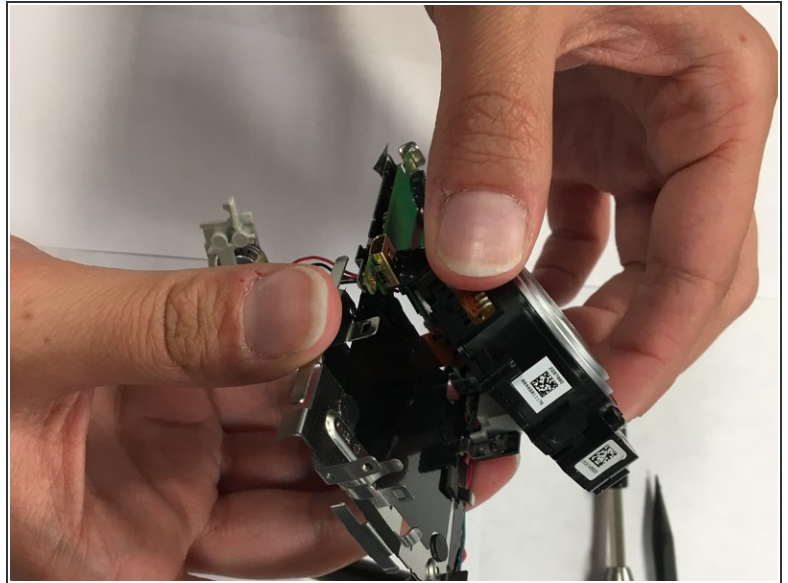
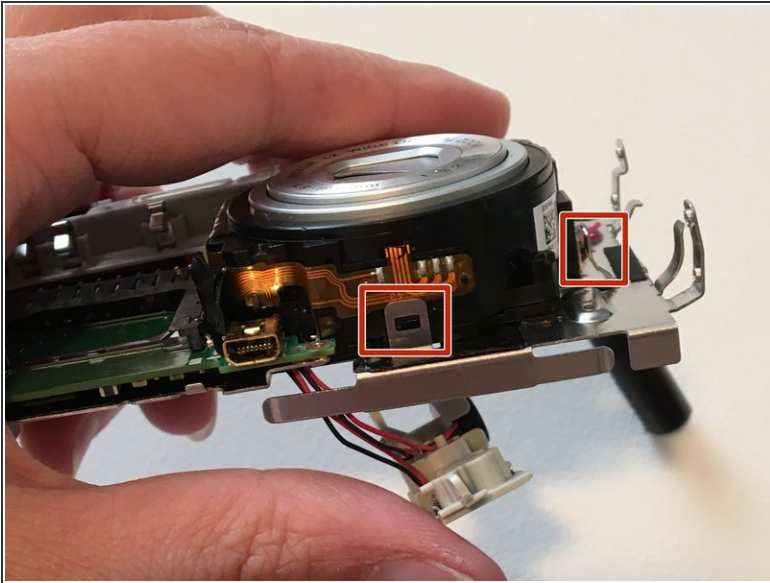
i There may be black tape covering the screw.

Step 13



- Use the flat end of a spudger to flip up the black tabs on the ZIF connectors.
- Pull the ribbon cables out of the ZIF connectors.

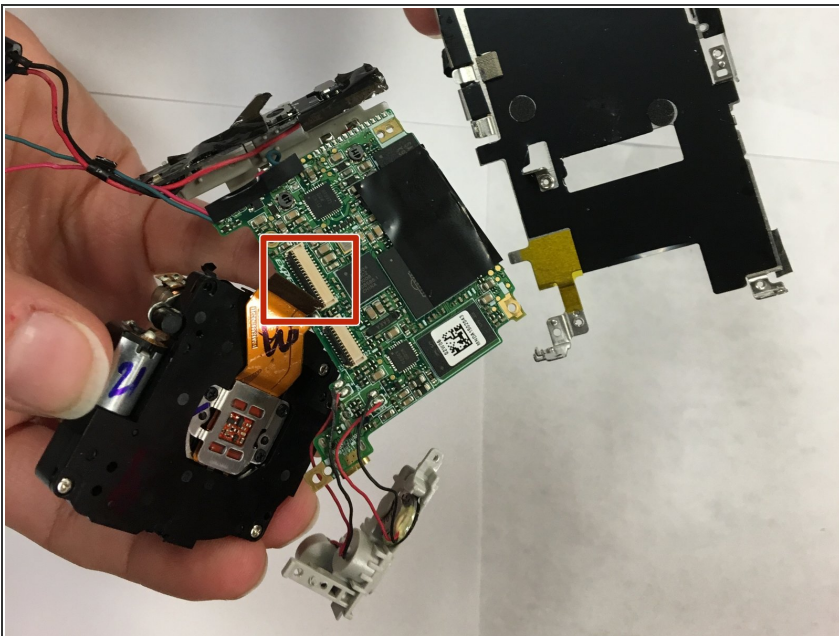
Step 14



- Use the flat end of a spudger to pry the lens locking tabs open while pulling the lens away from the camera body.

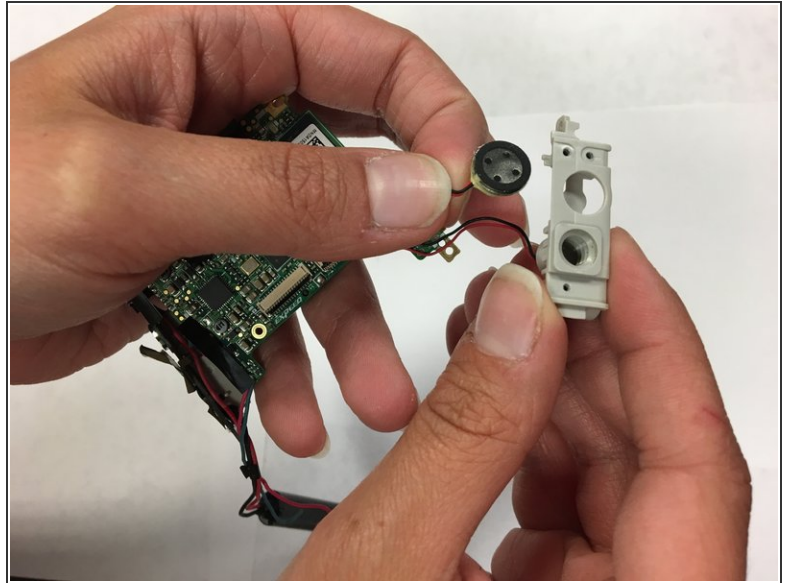
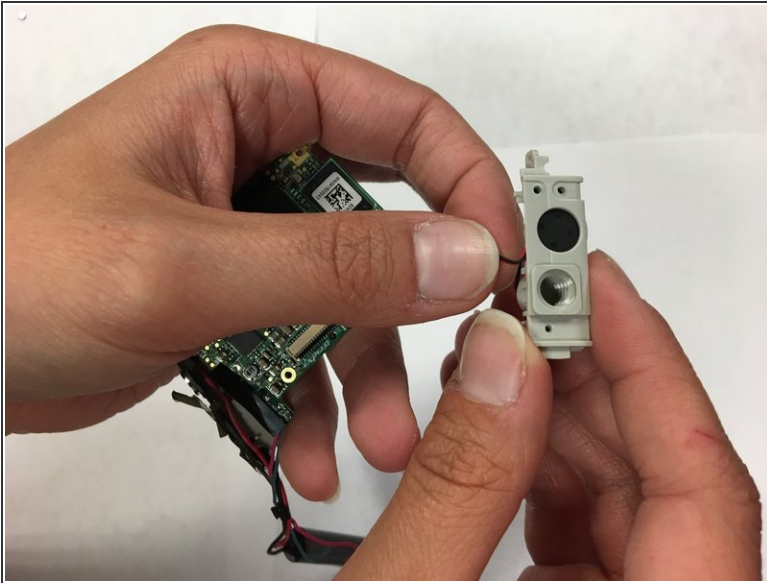
⚠ The tabs are brittle so use gently force.

Step 15



- Use the flat end of a spudger to lift up the black tab on the ZIF connector.
- Pull the orange ribbon cable out of the ZIF connector.
- Separate the lens from the motherboard.

Step 16 — Speaker



- Slide the speaker out from the bottom of the speaker piece.

To reassemble your device, follow these instructions in reverse order.