



# Nikon Coolpix S4100 Lens Replacement

In this guide, you will find instructions on how to replace the entire lens of the camera. This procedure includes the shutter, surrounding casing, and the lens itself.

Written By: Matthew Willis



## INTRODUCTION

If your camera's zoom ability is broken or jammed, you may need to replace the lens portion. Alternatively, if your camera's lens is damaged, you may need to replace the lens.



### TOOLS:

- [Precision tweezers](#) (1)
  - [Phillips #000 Screwdriver](#) (1)
  - [iFixit Opening Tools](#) (1)
  - [Spudger](#) (1)
-

## Step 1 — External Casing



- Using a Philips #000 head screwdriver, remove the 8 screws (3.30 mm) visible on the external part of the camera.
- There are 2 on each side, and 4 on the bottom.

## Step 2



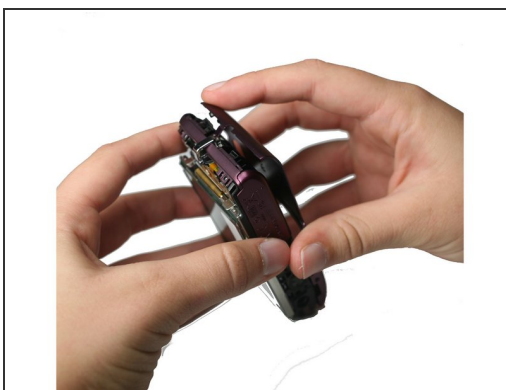
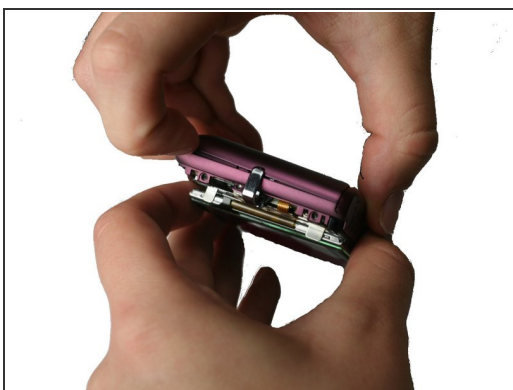
- Remove the black casing on the back of the camera that runs around the LCD screen.

## Step 3



- Using the Philips #000 head screwdriver, remove the 1.90 mm internal screw located just above the lanyard mount.

## Step 4



- Pry off the front shell casing.

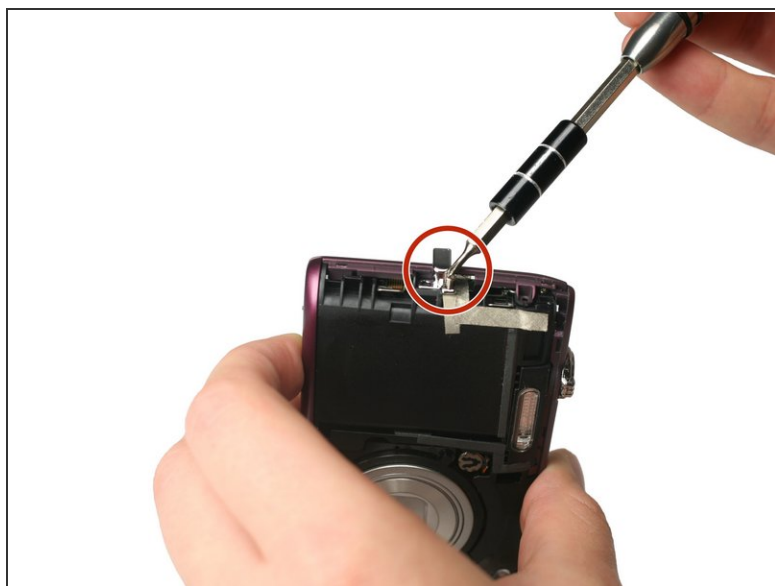
**i** If you find this difficult, use a prying tool to help gently remove the casing.

## Step 5



- Using the Philips #000 head screwdriver, remove the 3.30 mm screw located on the side of the camera near the lanyard mount.

## Step 6



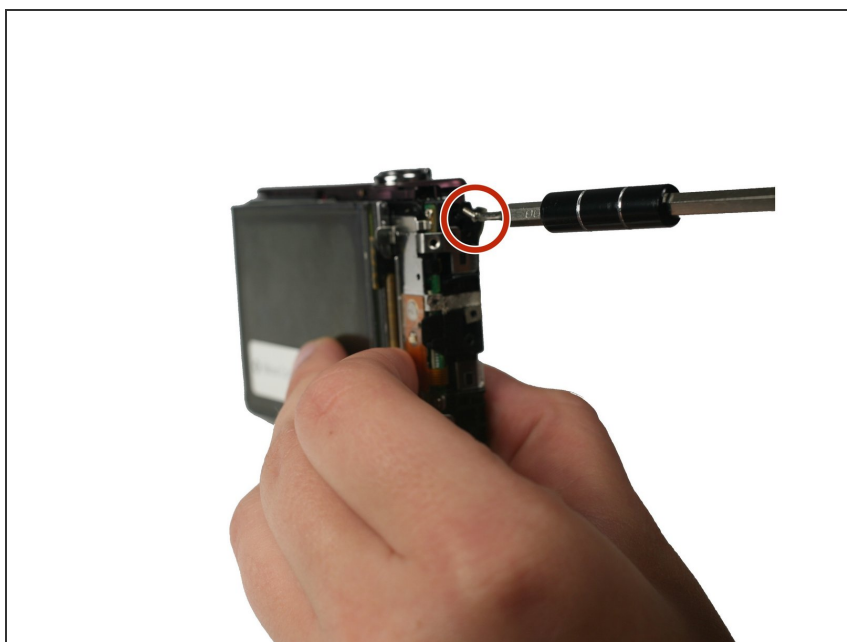
- Using the Philips #000 head screwdriver, remove 2 additional 3.30 mm screws holding the lanyard mount in place.

## Step 7



- Remove the lanyard mount and accompanying side shell casing off of the camera.

## Step 8



- Using the Philips #000 head screwdriver, remove the 3.30 mm screw securing the top shell casing.



## Step 9



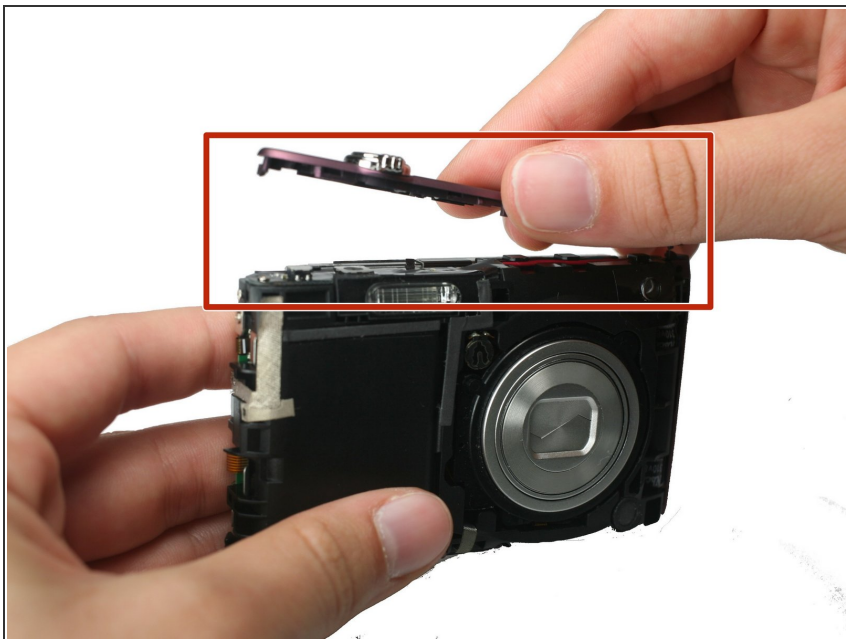
- Using the Philips #000 head screwdriver, remove the 3.40 mm screw located on the front of the camera in the upper corner by the LED light.

## Step 10



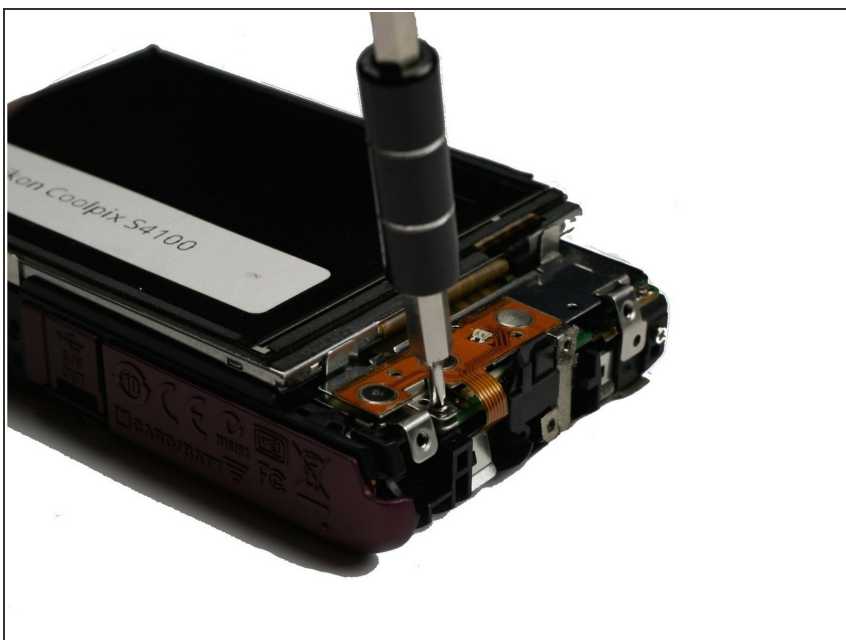
- Remove the remaining side shell casing.

## Step 11



- Remove the top shell casing.

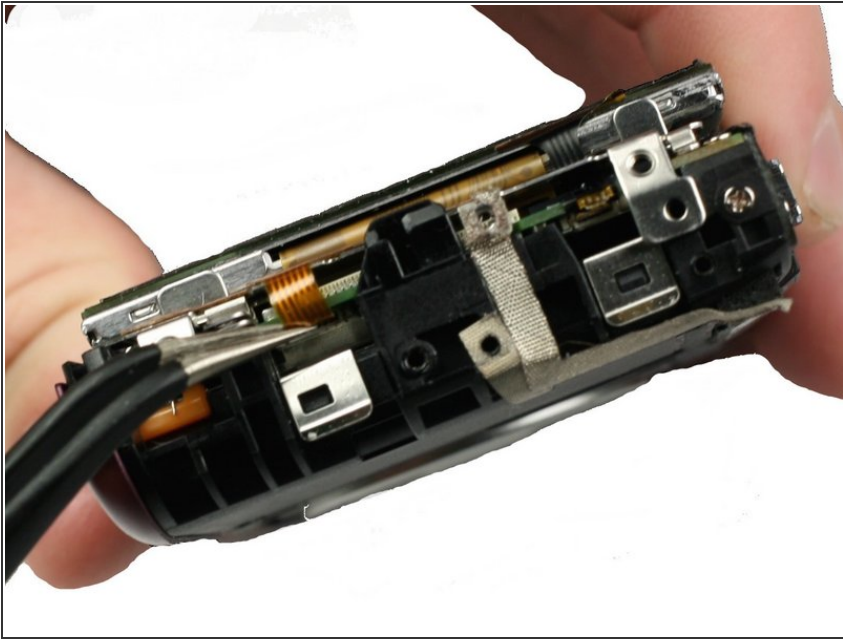
## Step 12 — Functional Button Plate



- Using the Philips #000 head screwdriver, remove the 3.40 mm screw located near the functional buttons.



## Step 13



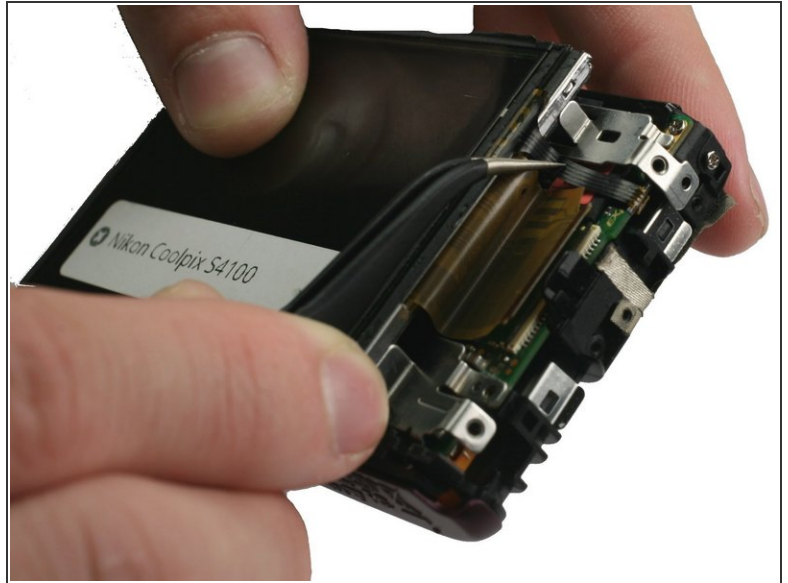
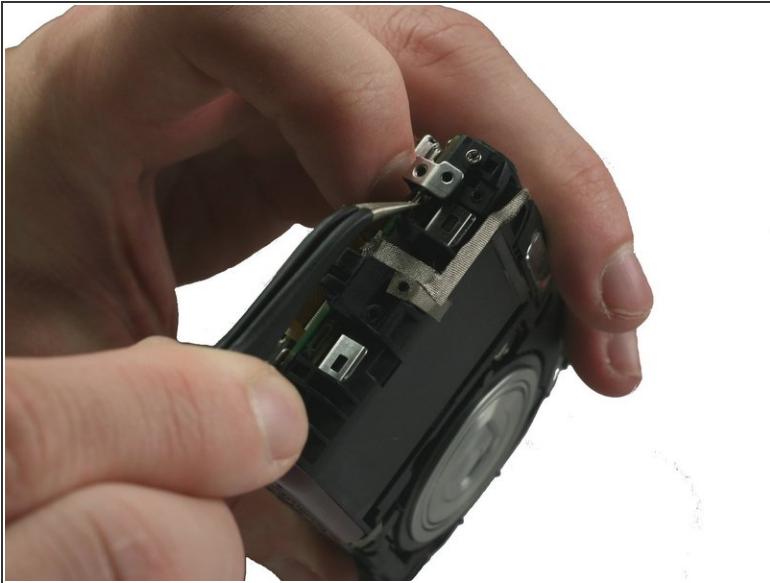
- Using precision tweezers, remove the ribbon cable that runs from the functional buttons plate to the under side of the motherboard.

## Step 14



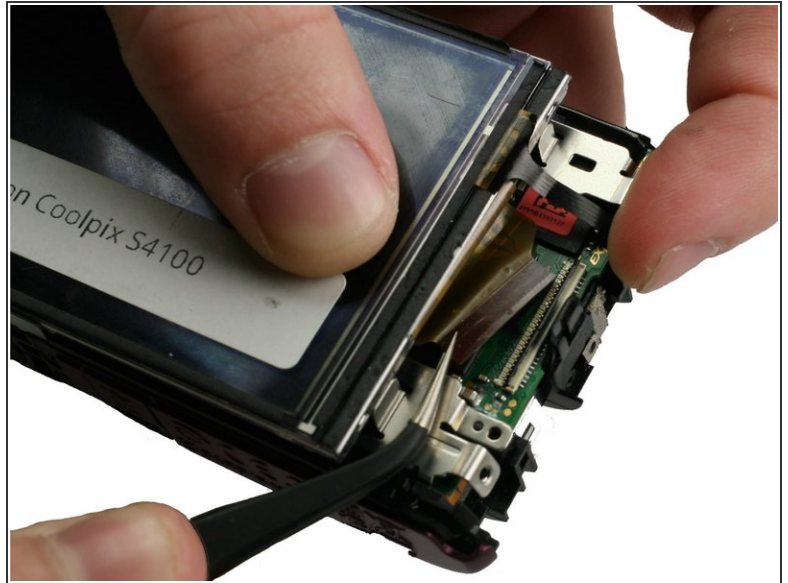
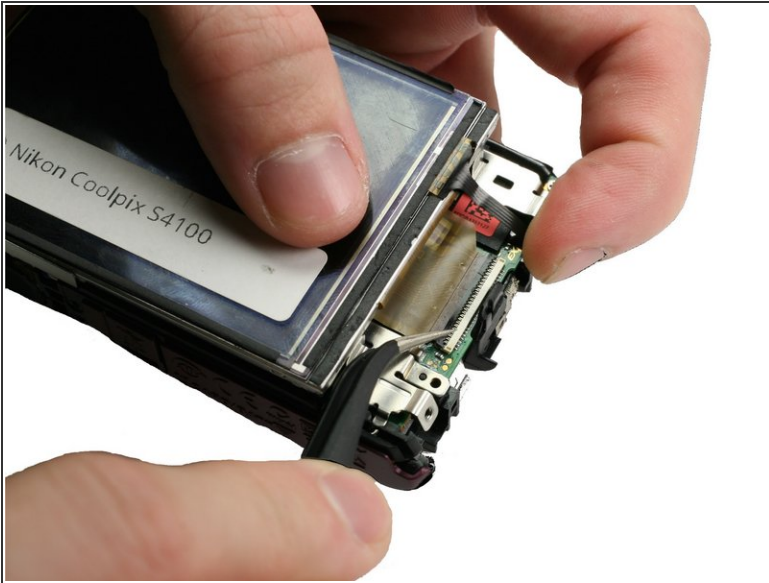
- Using precision tweezers, lift up the bottom of the functional buttons plate and remove the metal plate.

## Step 15 — LCD Screen



- Using precision tweezers, gently remove the ribbon cable running from LCD to the bottom side of the motherboard.

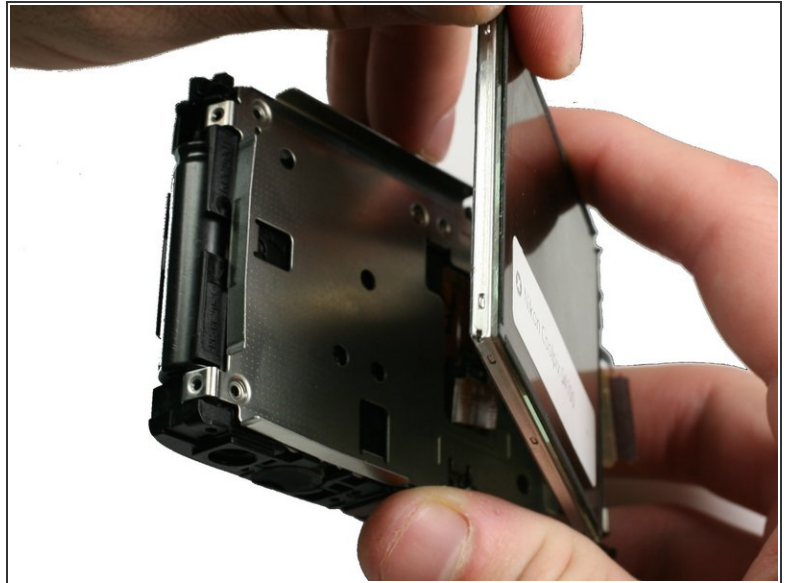
## Step 16



- Using precision tweezers, gently lift up on the black strip of the ZIF Connector securing the cable from the LCD to the motherboard.
- Then, gently remove the wire by pulling the base of the ribbon cable towards the LCD screen.
- ⚠ Do not poke or destroy the cable itself. Be careful to only grab the black fold in the tweezers.
- ℹ The black strip will fold back to reveal the cable, but remain attached to the motherboard.

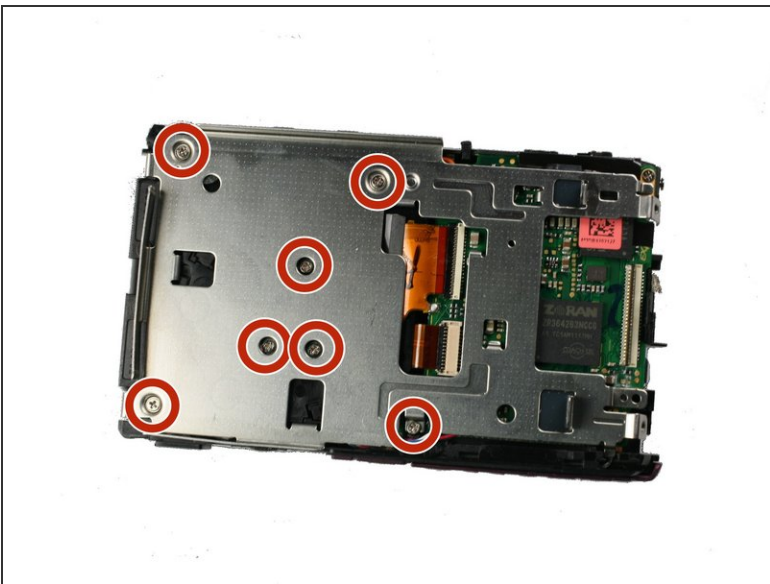


## Step 17



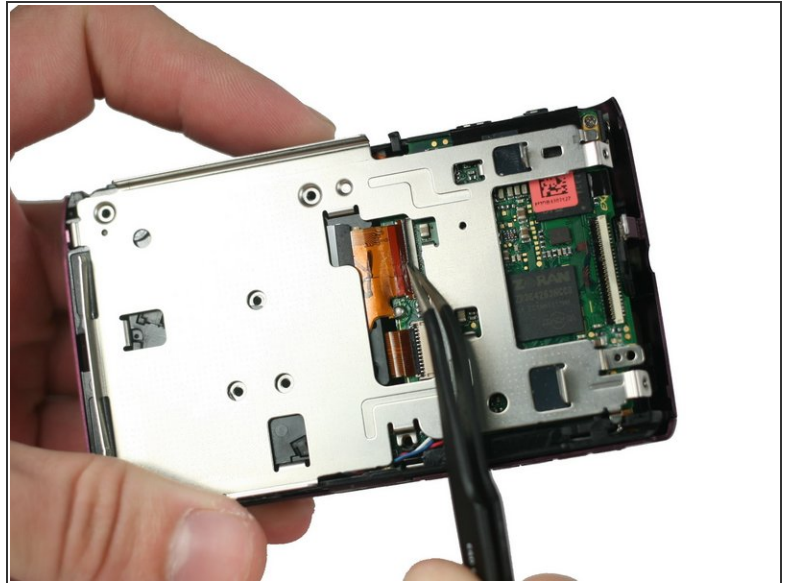
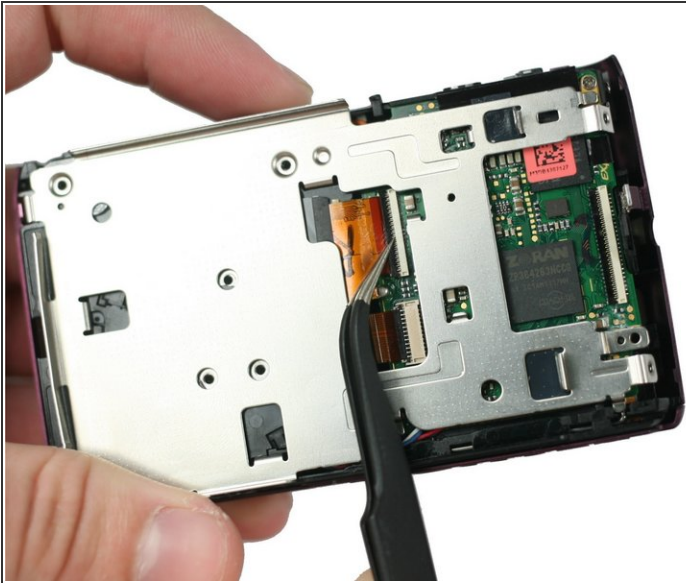
- Remove the LCD screen from the metal mount.

## Step 18 — Lens



- Using a Philips #000 head screwdriver, remove 7 Philips head screws of length 3.4mm from the metal LCD camera mount.

## Step 19



- Using precision tweezers, gently lift up on the black strip of the first ZIF Connector securing the cable from the lens to the connector on the motherboard.

**i** The black strip will fold back, but remain attached to the connector.

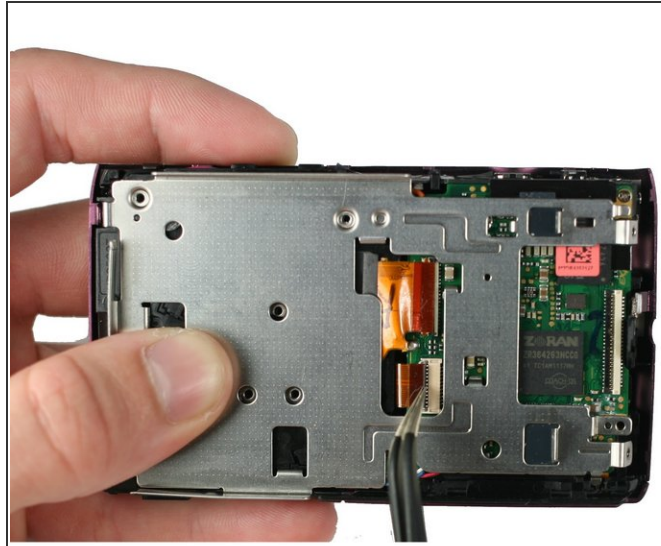
## Step 20



- Using precision tweezers, grab the base of the first ribbon cable and pull out parallel to the metal mount.

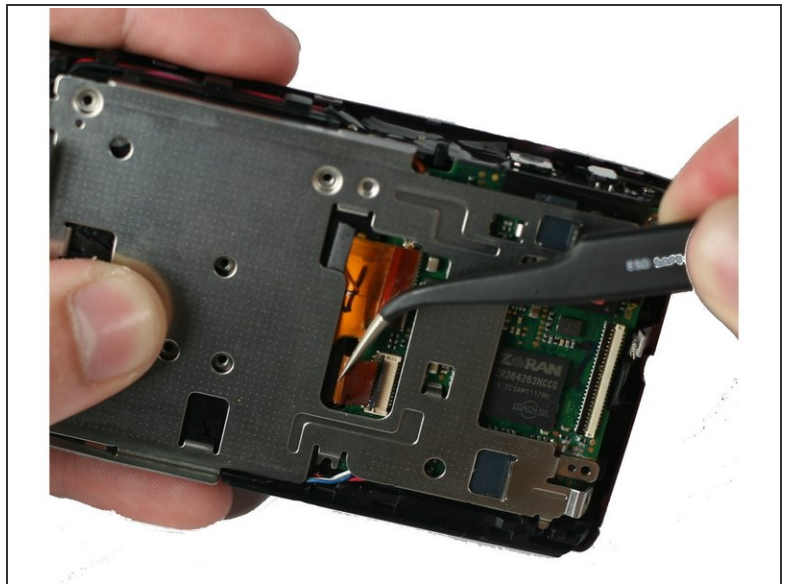


## Step 21



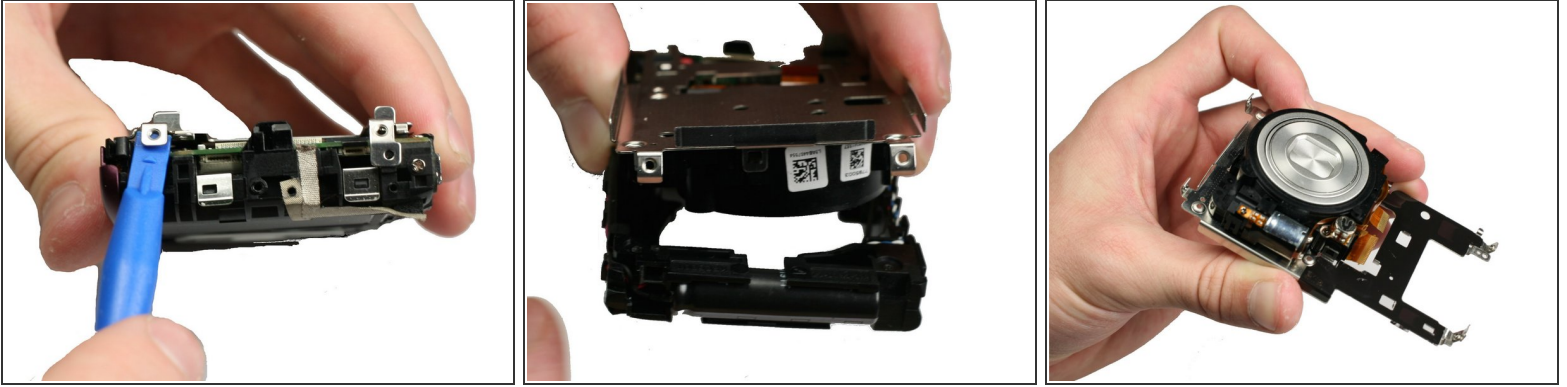
- Using precision tweezers, gently lift up on the black strip of the second ZIF Connector securing the cable from the lens to the connector on the motherboard.
- ⓘ The black strip will fold back, but remain attached to the connector.

## Step 22



- Using precision tweezers, grab the base of the second ribbon cable and pull out parallel to the metal mount.

## Step 23



- Using a plastic spudger, pry open the 4 clamps on the exterior of the screen mount.
- Separate the screen mount and the lens.

## Step 24



- Using a plastic spudger, pry the 3 metal clamps away from the lens.
- ⓘ The metal clamps are located on the perimeter of the lens.
- Remove the lens.

To reassemble your device, follow these instructions in reverse order.