



# Nikon Coolpix S5200 LCD Screen Replacement

Replace the LCD Screen on your Nikon Coolpix S5200 so you can access all of the camera's functions

Written By: Andy Powers



---

## INTRODUCTION

If the screen on your Nikon Coolpix S5200 is unresponsive or not working, use this repair guide to replace the entire screen,




### TOOLS:

- [Phillips #00 Screwdriver](#) (1)
-

## Step 1 — LCD Screen



- There are four 0.1 mm screws holding the front and back of the camera together all along the outside of the camera

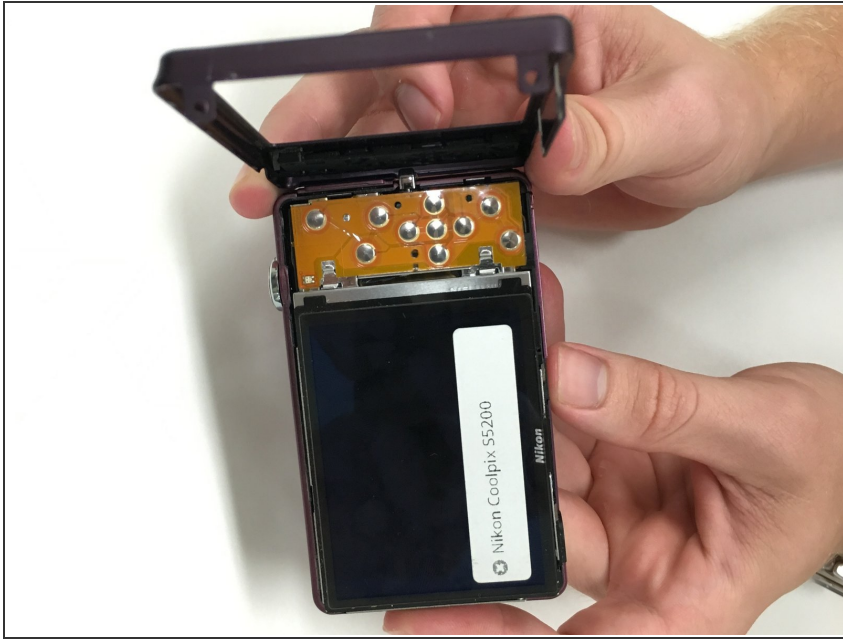
 There should be four screws

## Step 2



- Use the Phillips Head screw driver head to remove the four 0.1 mm screws surrounding the outer edges of the camera

### Step 3



- Pull the plastic back cover off of and away from the LCD screen

### Step 4



- Carefully remove the LCD screen from the silver plate that once held it in place by pulling it away from the internal components

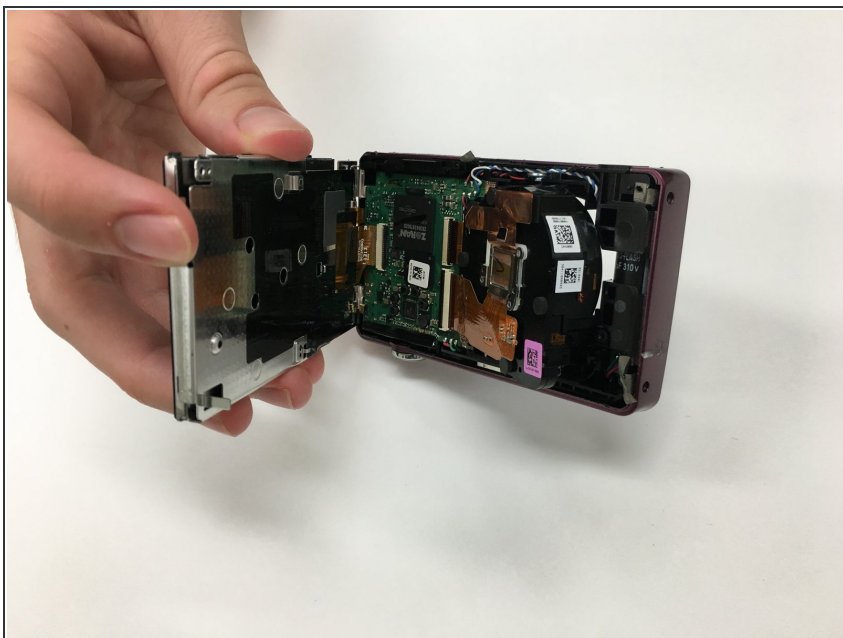


## Step 5



- Remove the six designated screws sized 0.1 mm from the metal plate using a Phillip's Head screwdriver in size PH00.

## Step 6



- Lift the metal plate away from the internal components of the camera

## Step 7



- Carefully remove the LCD screen by pulling it away from the camera. Repeat these steps in reverse order to install the new LCD screen.

To reassemble your device, follow these instructions in reverse order.