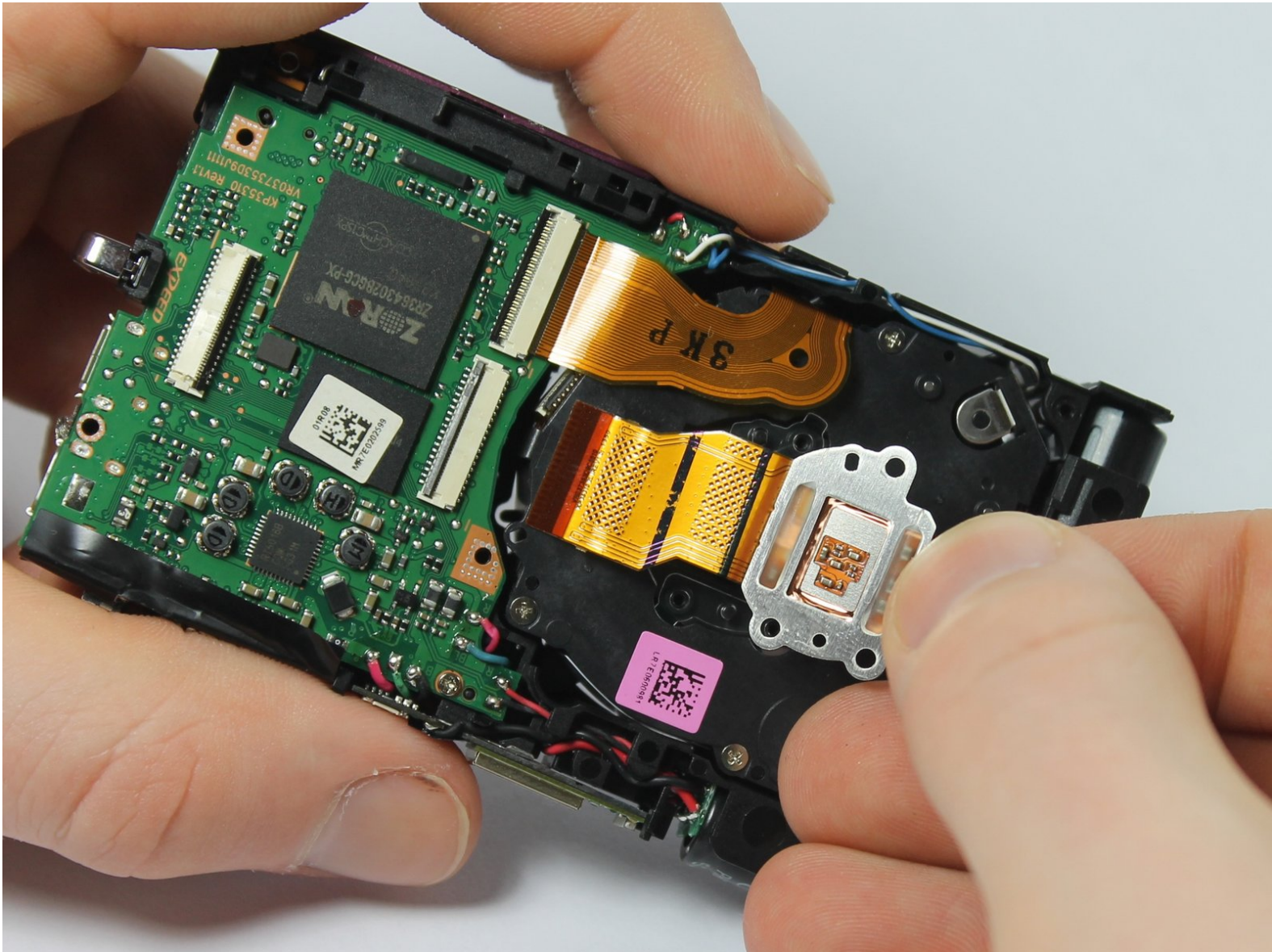




Nikon Coolpix S5300 Image Sensor Replacement

How to get to the image sensor in the Nikon Coolpix S5300.

Written By: Riordan McCole



INTRODUCTION

This guide will allow the reader to understand how to disassemble the Nikon Coolpix S5300 and get to its image sensor.

TOOLS:

- [Phillips #000 Screwdriver](#) (1)
 - [iFixit Opening Tools](#) (1)
-

Step 1 — Battery



- Turn the camera upside down and locate the battery compartment.
- Slide the compartment open following the direction of the arrow.

Step 2



- Press the orange release button to release and remove the battery.
- Replace or insert battery in it's respective terminals

Step 3 — Outer Casing



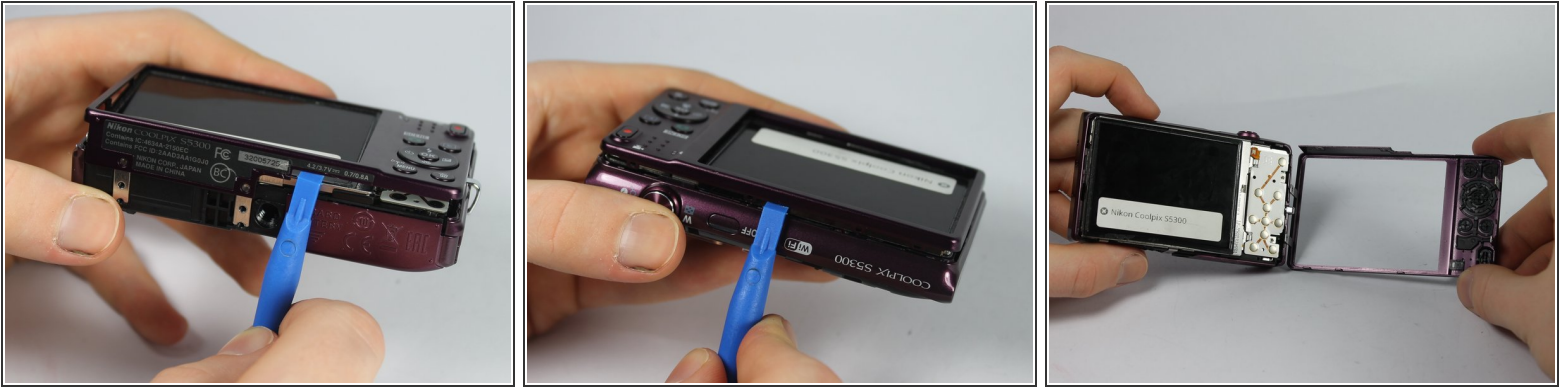
- Remove the four 0.1mm screws from the bottom of the camera using the phillips head screwdriver
- Using the same screwdriver, remove the 2 screws on the side of the camera.
- Remove the 2 screws from the other side of the camera.
- ❗ One of the screws is under the I/O port cover.

Step 4



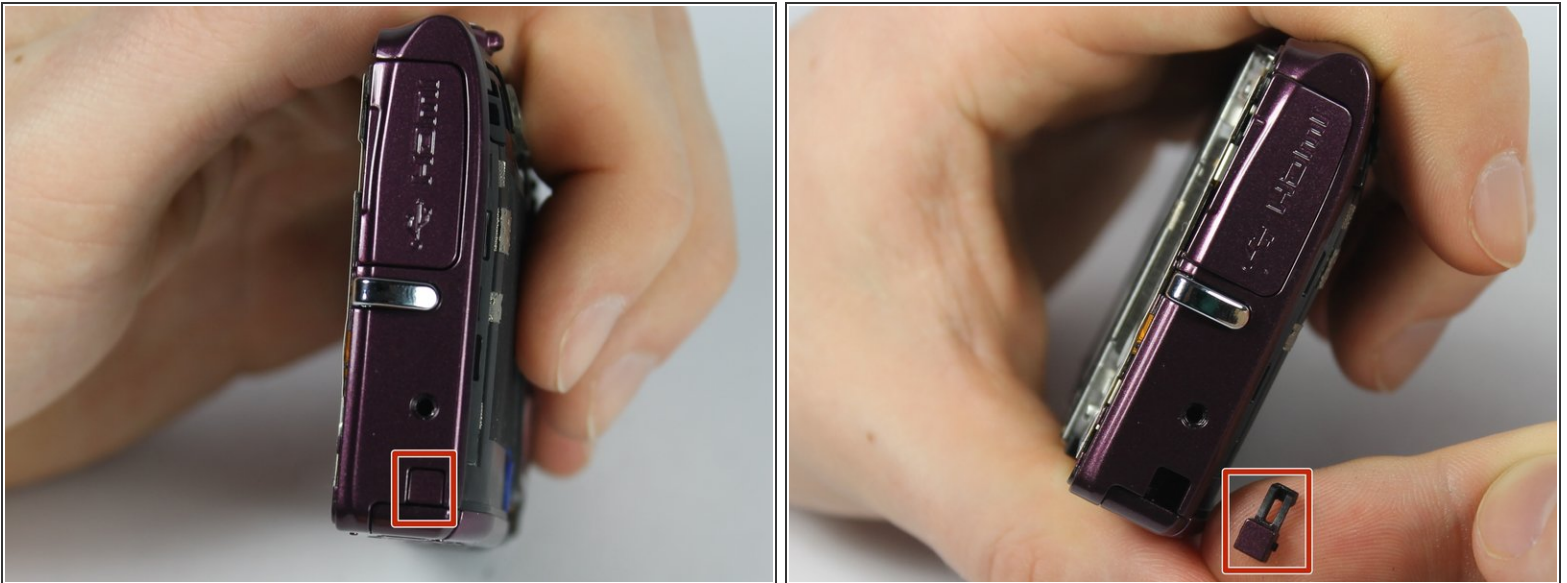
- Use the plastic opening tool to carefully separate the cover from the camera.
- Work the plastic opening tool around all the edges of the front plate.
- Pull the purple plastic cover off gently from the screen.

Step 5



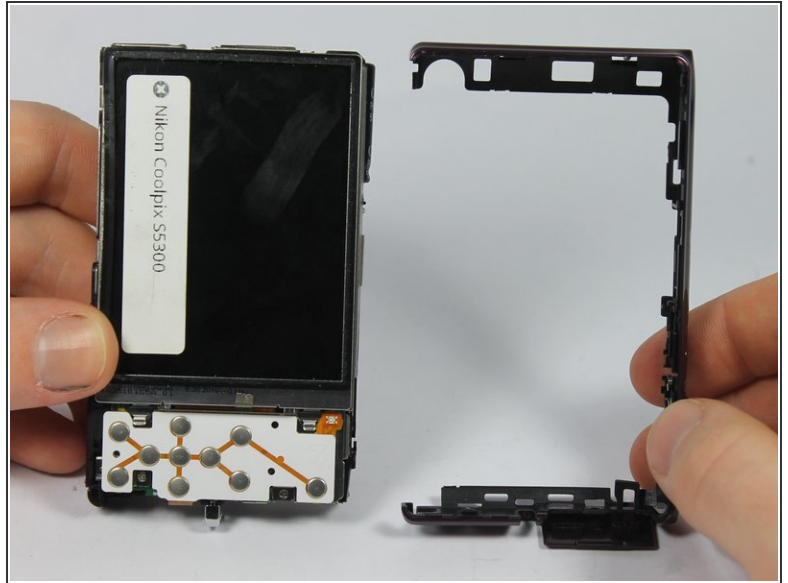
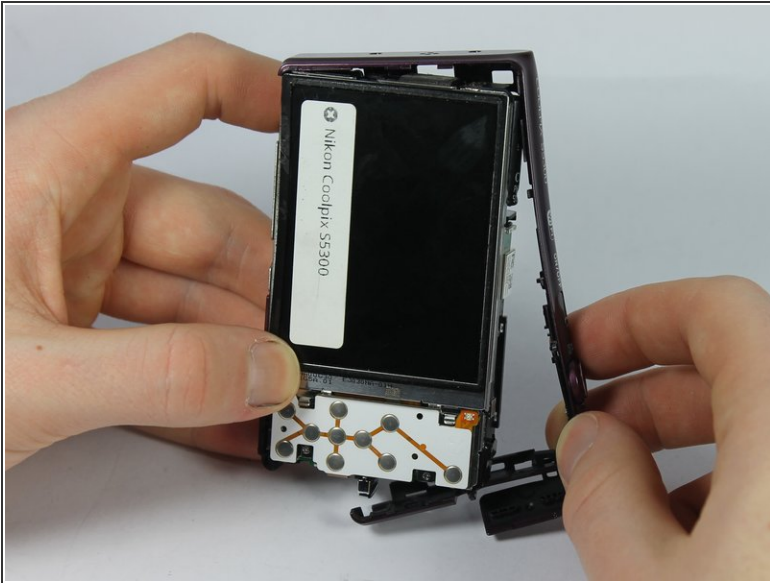
- Turn the camera over so the LCD screen is facing you.
- Carefully remove the front shell by gently prying around the corners with the plastic opening tool until it releases.

Step 6



- Be careful to keep track of little pieces of the outside casing.

Step 7



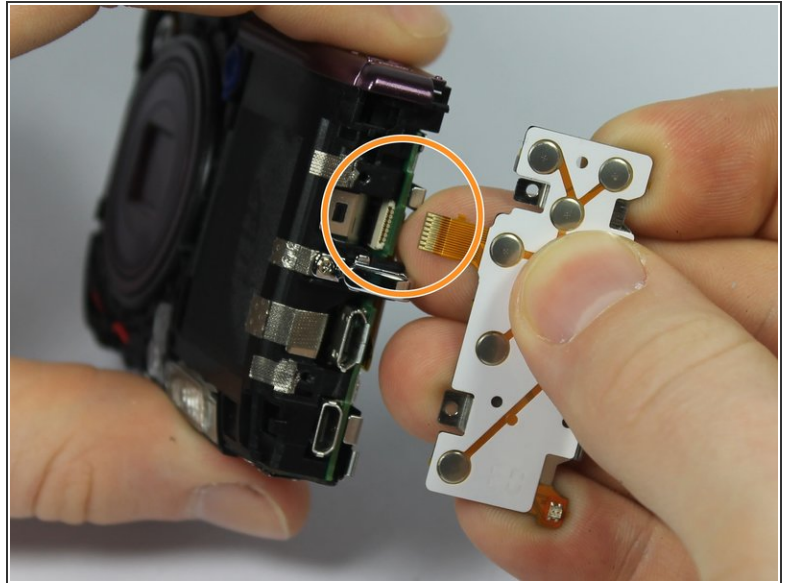
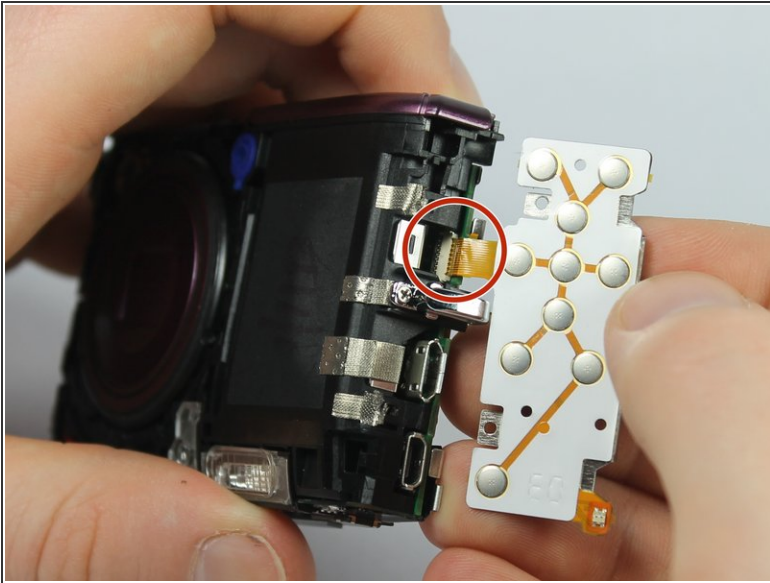
- Carefully remove the top button casing by pulling it away from main camera.

Step 8 — Button Panel



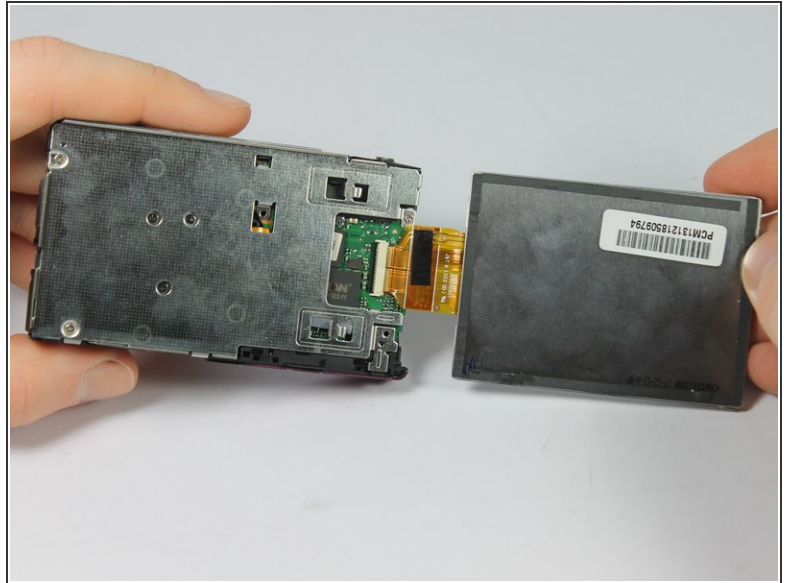
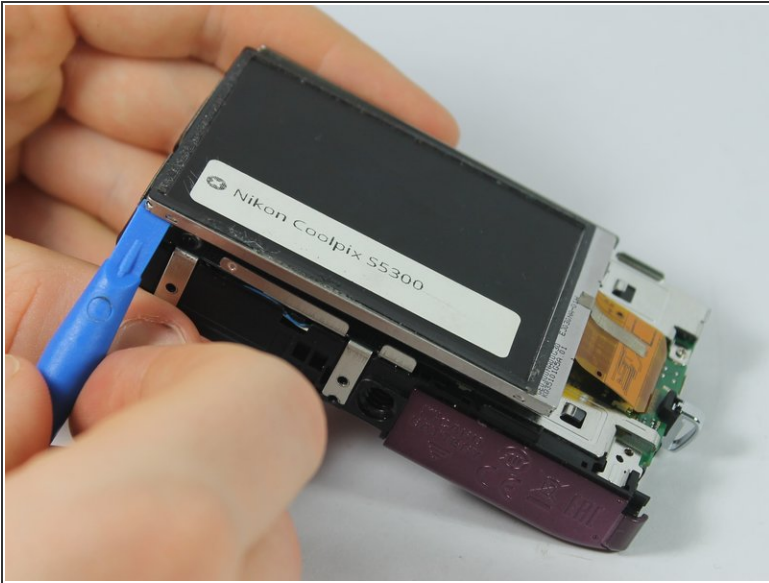
- Remove the 2 screws on the silver plate
 - Gently lift the screen and silver plate away from the internal components.
- ⚠ Do not separate the plate and screen from the camera

Step 9



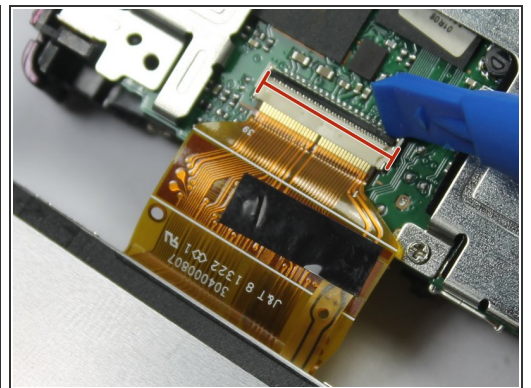
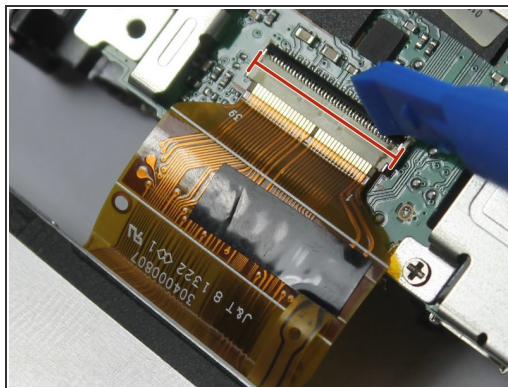
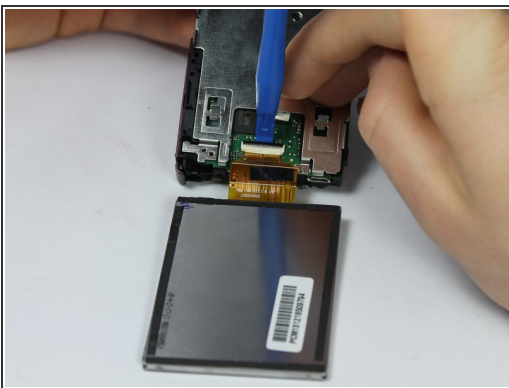
- Carefully move the button panel away from the silver plate.
 - To disconnect the ribbon cable, use the tip of a plastic opening tool or your fingernail to flip up the small retaining flap.
 - Safely pull the ribbon cable out and then remove the button panel.
- ⚠ Be sure you are prying up on the hinged retaining flap, not the connector itself.

Step 10 — LCD Display Screen



- Carefully remove the screen away from the silver plate.
- Carefully fold the screen over exposing the latch for the ribbon cable.

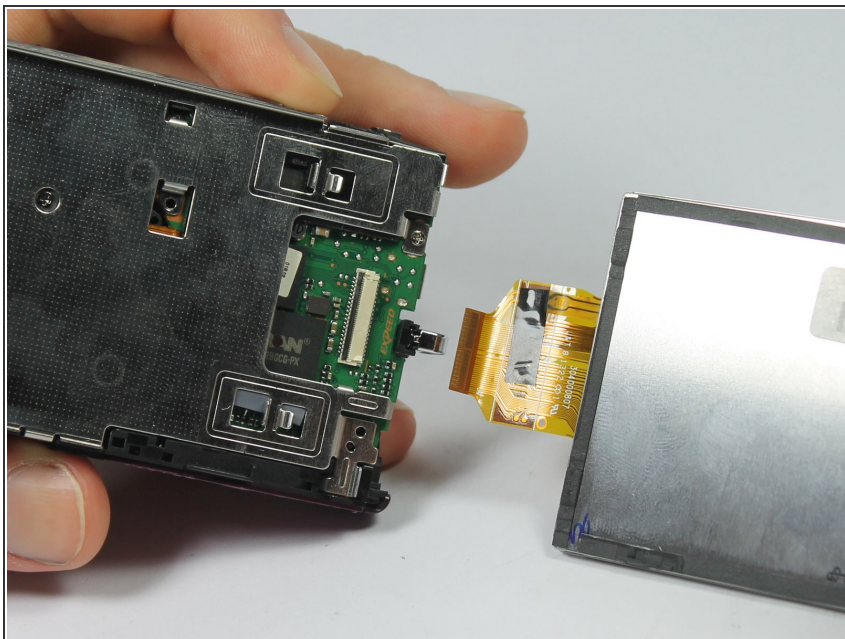
Step 11



- To disconnect the ribbon cable, use the tip of a plastic opening tool or your fingernail to flip up the small retaining flap. Then, you can safely pull the ribbon cable out.

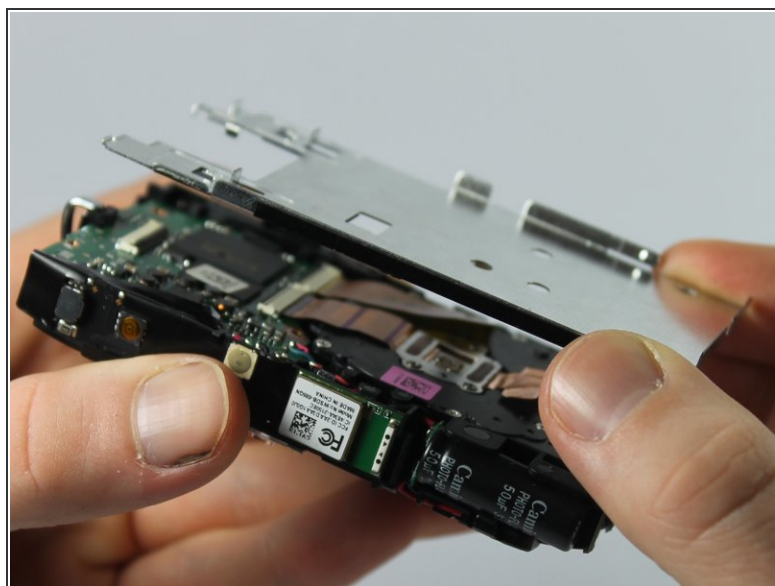
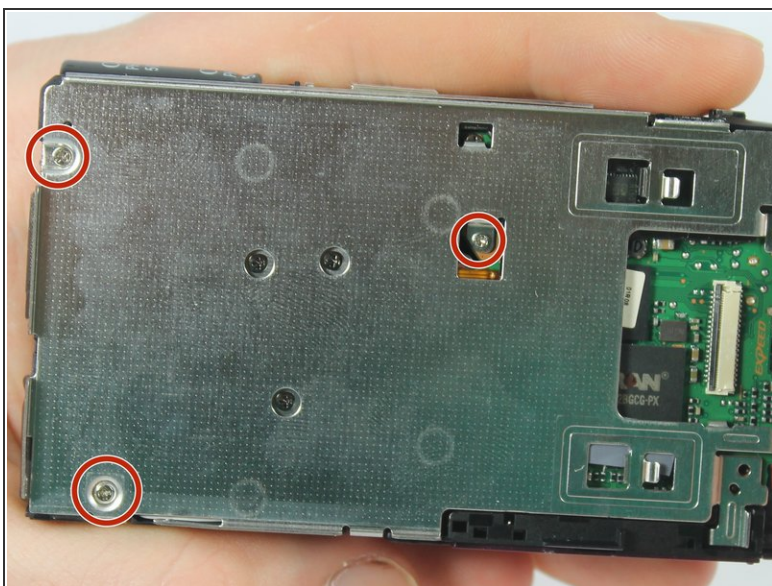
⚠ Be sure you are prying up on the hinged retaining flap, not the connector itself.

Step 12



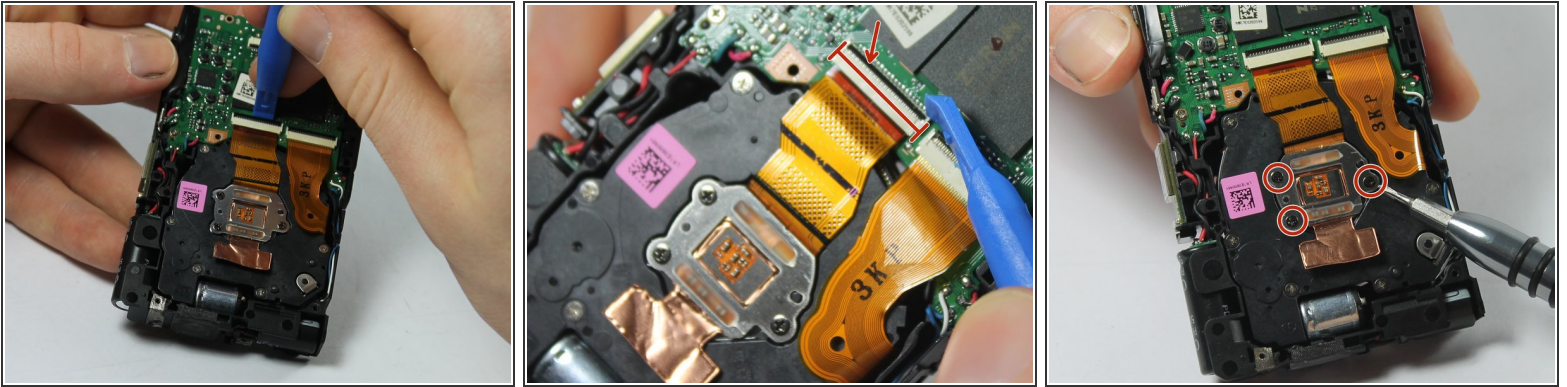
- Once the ribbon cable is disconnected, remove the LCD screen.

Step 13 — Image Sensor



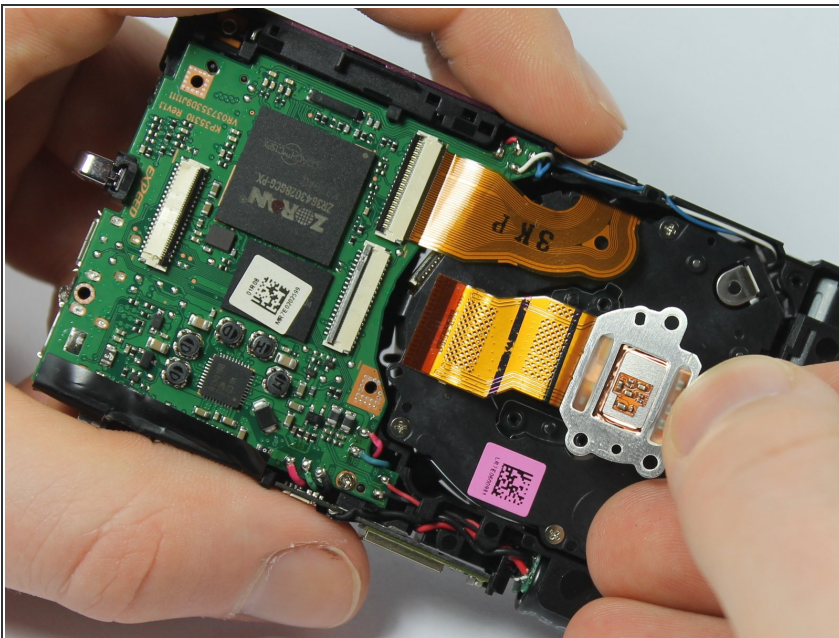
- Using the phillips head screwdriver, remove the three 0.1mm screws on the metal plate.
- Carefully remove metal plate from the camera.

Step 14



- Use the plastic opening tool or your finger nail to carefully flip up the ribbon cable retaining flap.
- Use the same screwdriver to remove the three 3mm screws that were revealed after removing the metal plate.

Step 15



- Gently pull the ribbon cable to remove the image sensor.

To reassemble your device, follow these instructions in reverse order.