



# Nikon Coolpix S6300 Buttons Replacement

This guide shows how to replace the internal component for the navigation buttons.

Written By: Michael Lynch



---

# INTRODUCTION

This guide shows how to remove a broken internal component for navigation buttons.



## TOOLS:

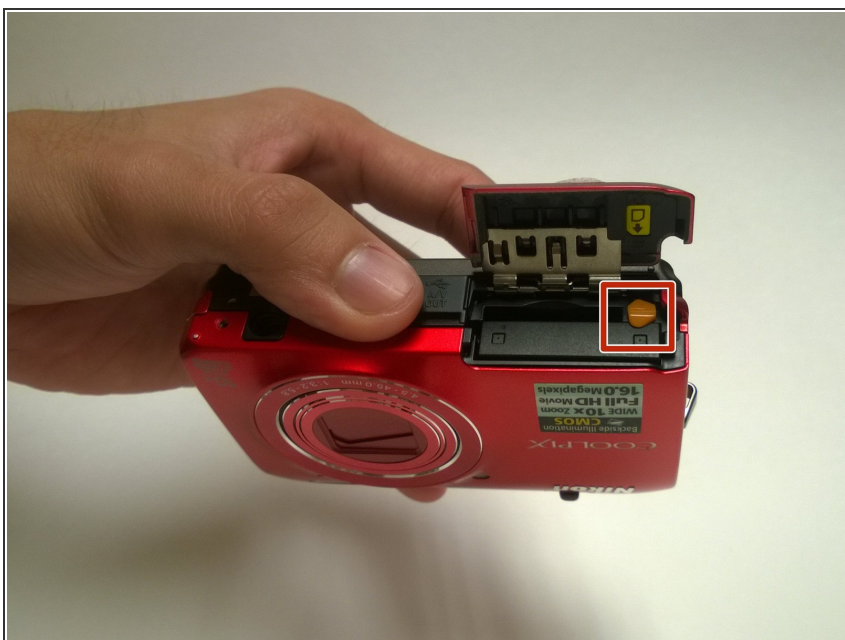
- [Phillips #00 Screwdriver](#) (1)
  - [iFixit Opening Tools](#) (1)
-

## Step 1 — Battery



- Place the camera facing upwards.
- Press down on the battery cover and slide towards the front face of the camera.

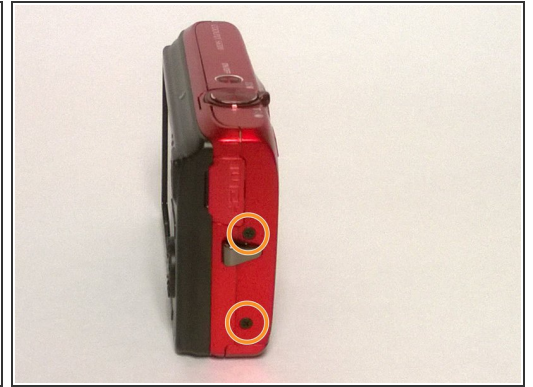
## Step 2



- Rotate the orange battery clip in the camera to release the battery.

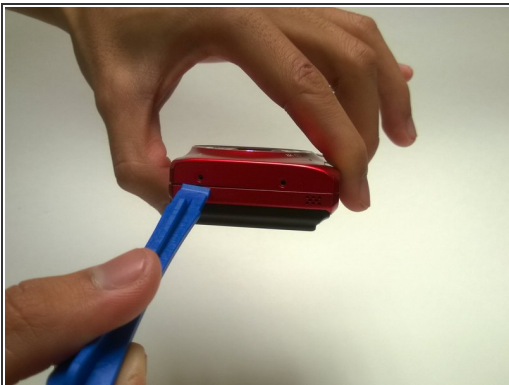


## Step 3 — Buttons



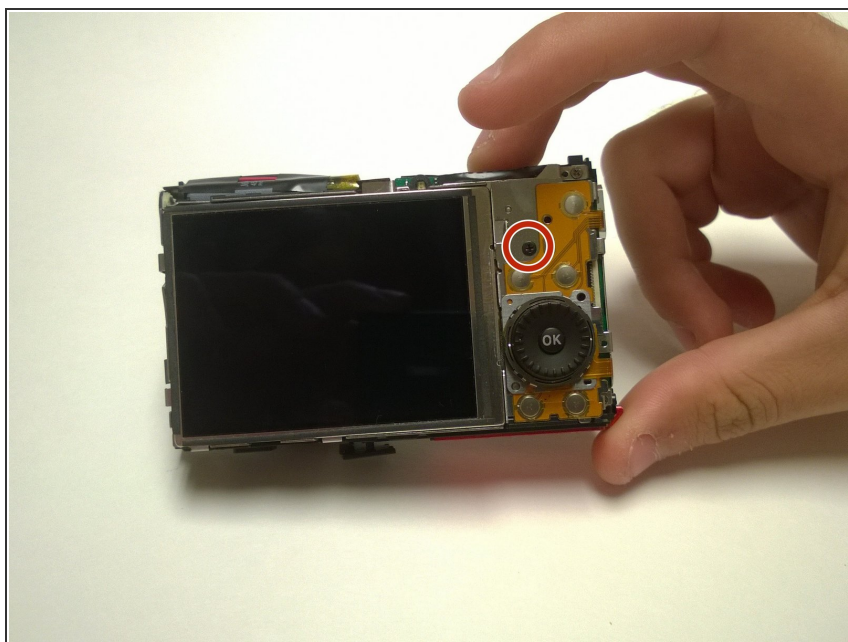
- Locate the eight outer PH 2mm screws on the device.
- Using the PH00 screwdriver remove all of the screws from the camera.

## Step 4



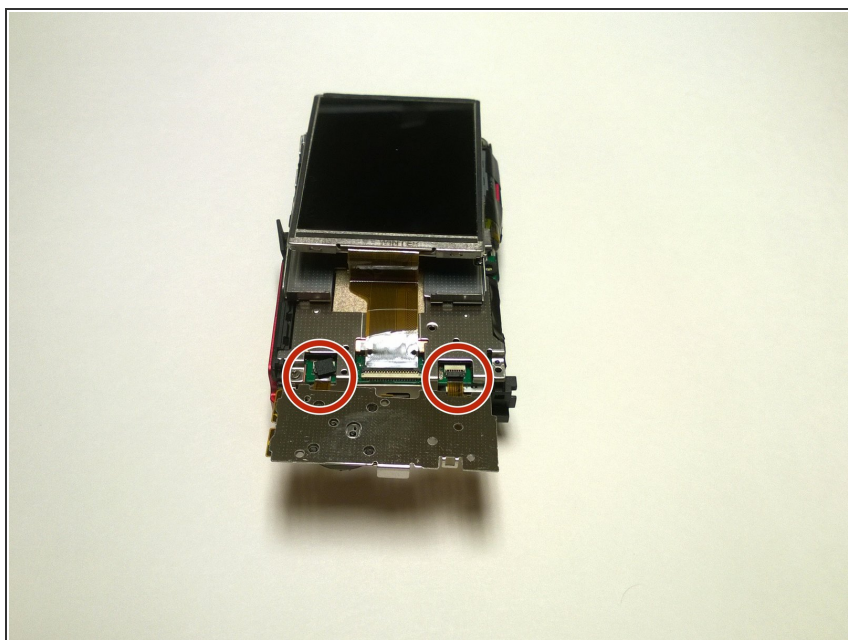
- Using a plastic opening tool, gently pry off the front and rear plates.
- Be patient with this step, do not force the clips holding the plates together.

## Step 5



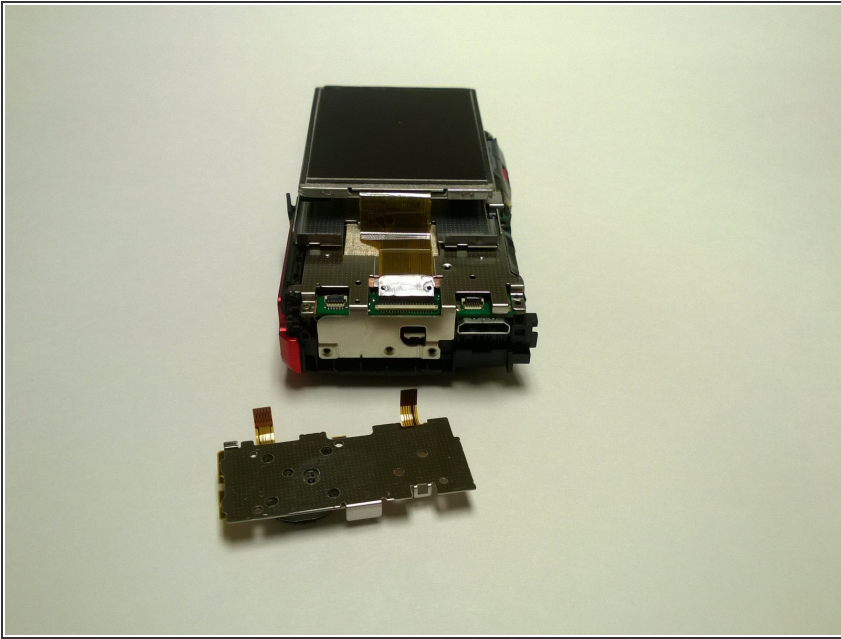
- Using a Phillips #00 screwdriver, remove the PH 2mm screw located to the right of the screen, above the OK dial.

## Step 6



- Remove the two clasp using a plastic spudger
- ⚠ Be careful when removing the clasp to prevent ripping of the clasp

## Step 7



- You may now remove the internal panel of the buttons

To reassemble your device, follow these instructions in reverse order.