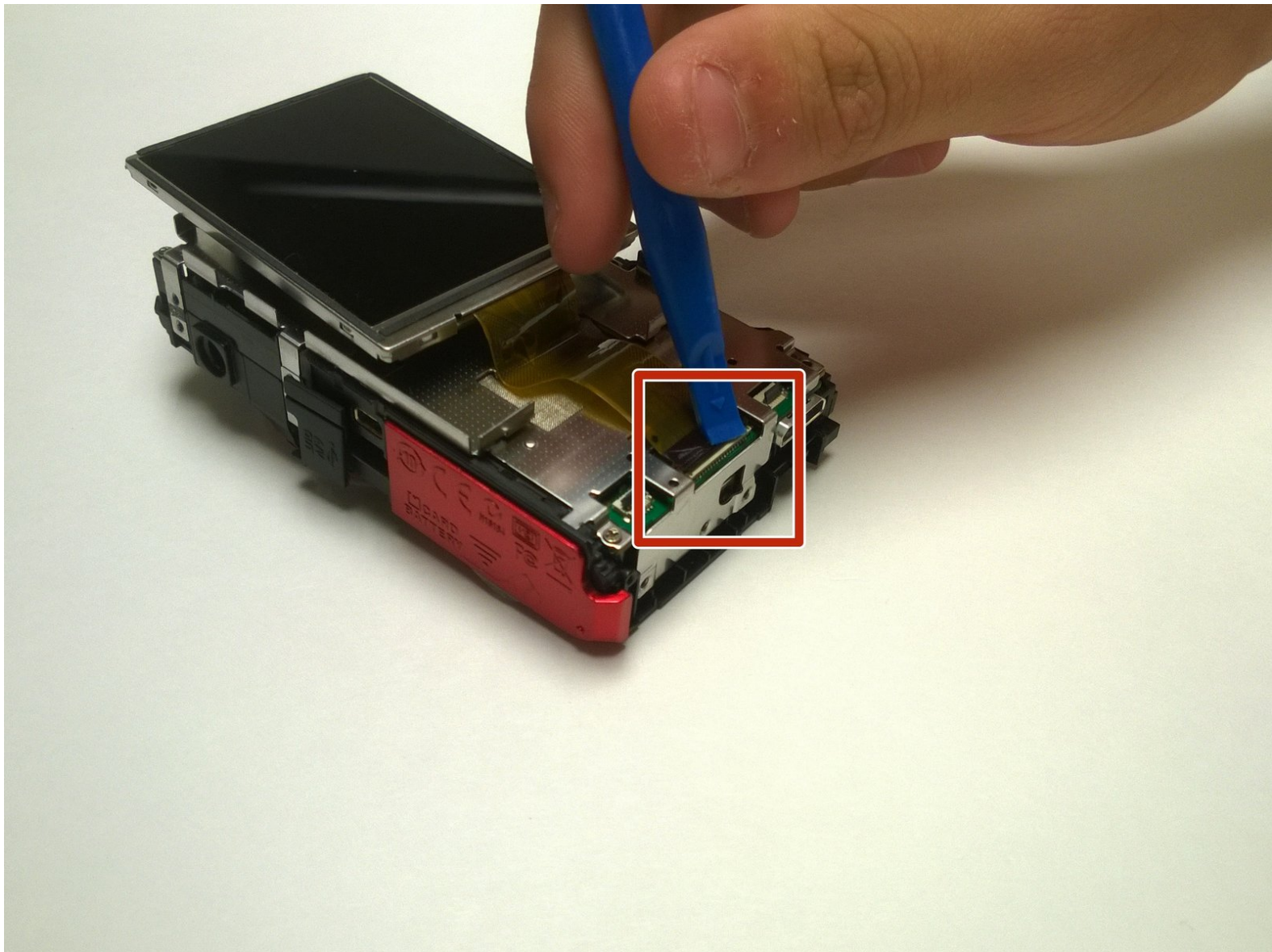




Nikon Coolpix S6300 Display Replacement

The guide demonstrates how to replace the digital camera display.

Written By: Hung



INTRODUCTION

This guide shows how to replace a broken display



TOOLS:

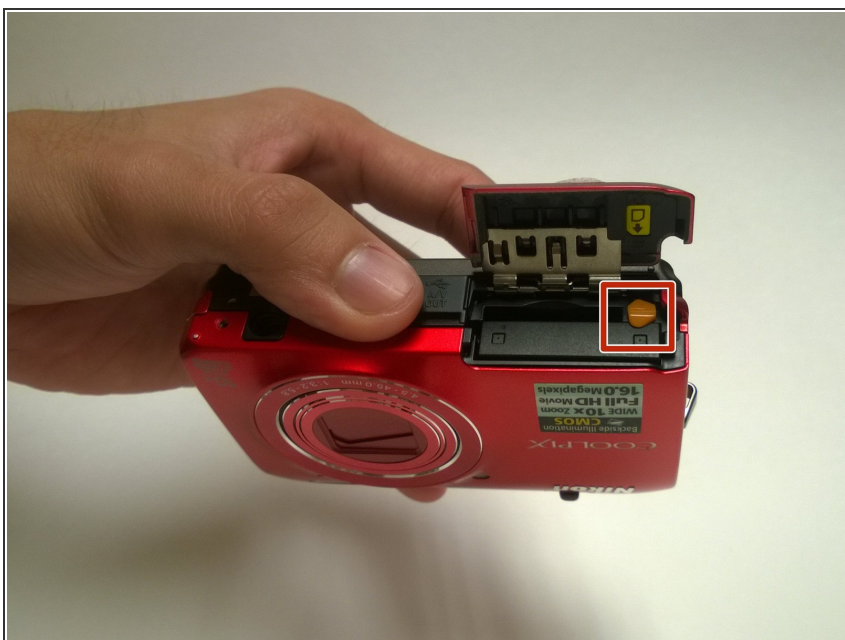
- [Phillips #00 Screwdriver](#) (1)
 - [iFixit Opening Tools](#) (1)
-

Step 1 — Battery



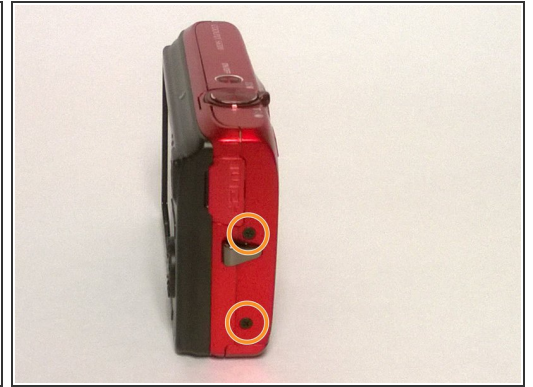
- Place the camera facing upwards.
- Press down on the battery cover and slide towards the front face of the camera.

Step 2



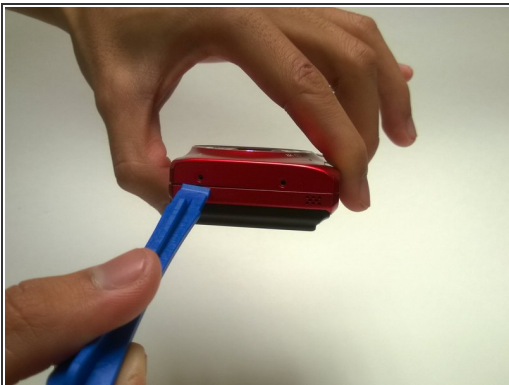
- Rotate the orange battery clip in the camera to release the battery.

Step 3 — Buttons



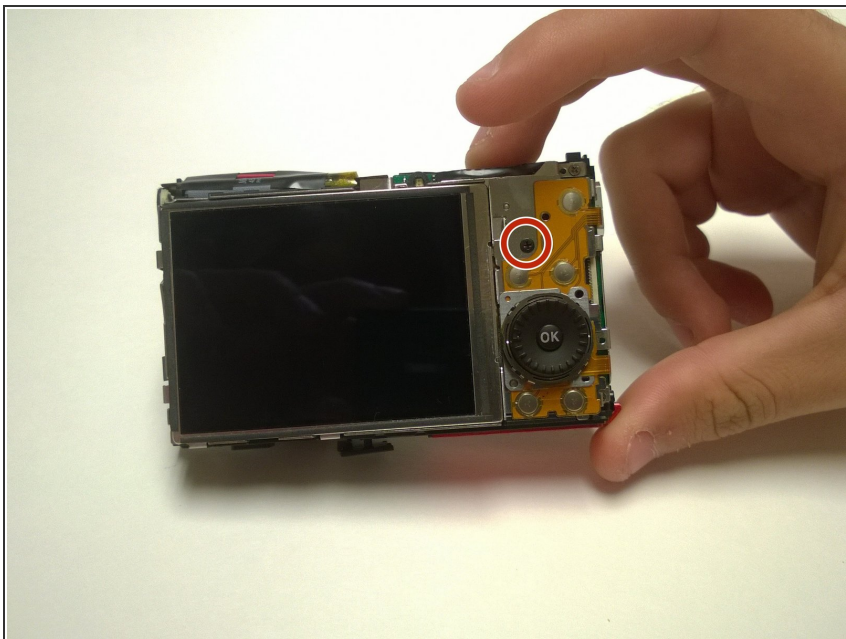
- Locate the eight outer PH 2mm screws on the device.
- Using the PH00 screwdriver remove all of the screws from the camera.

Step 4



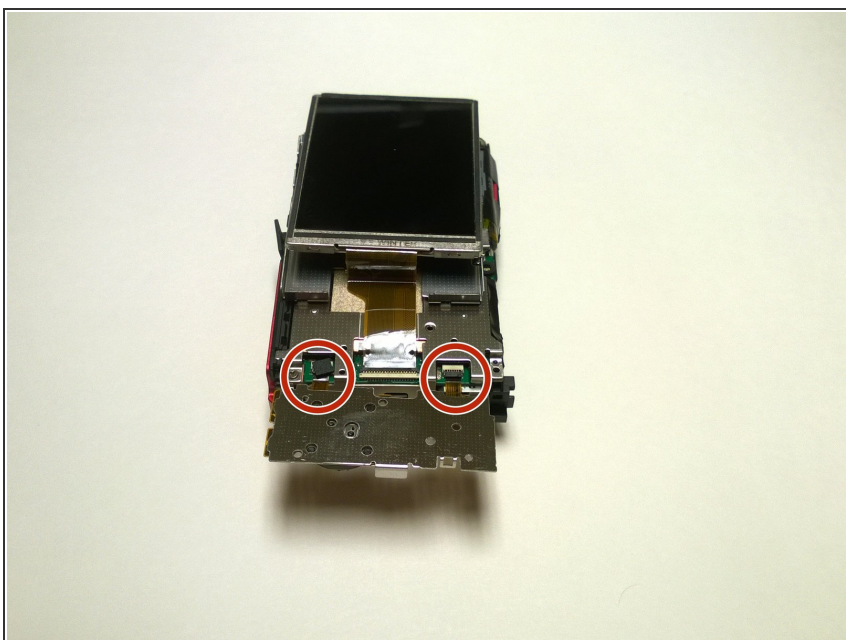
- Using a plastic opening tool, gently pry off the front and rear plates.
- Be patient with this step, do not force the clips holding the plates together.

Step 5



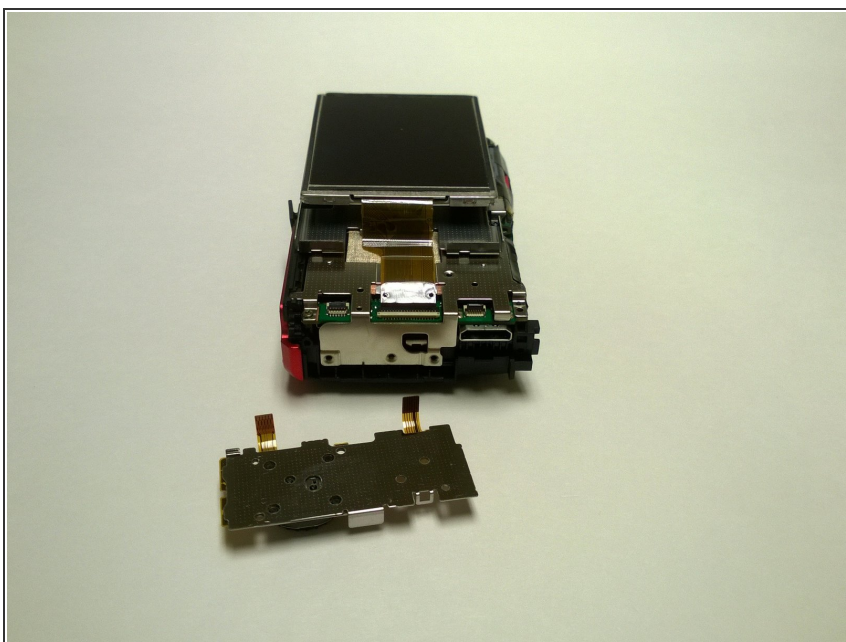
- Using a Phillips #00 screwdriver, remove the PH 2mm screw located to the right of the screen, above the OK dial.

Step 6



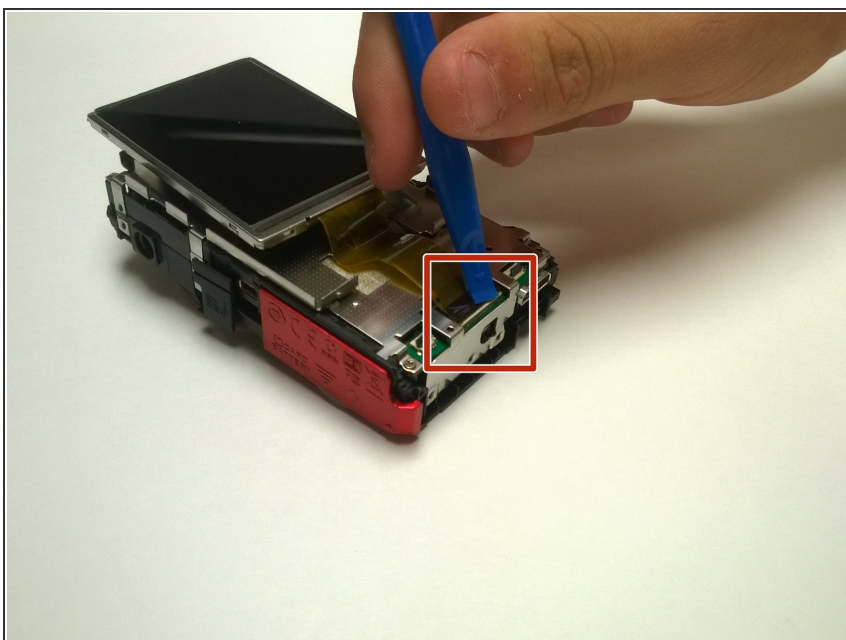
- Remove the two clasp using a plastic spudger
- ⚠ Be careful when removing the clasp to prevent ripping of the clasp

Step 7



- You may now remove the internal panel of the buttons

Step 8 — Display



- Remove the clasp from the ribbon cable using the plastic spudger.
- ⚠ Make sure to be gentle when removing the clasp to prevent it from ripping.
- You may now remove the display.

To reassemble your device, follow these instructions in reverse order.