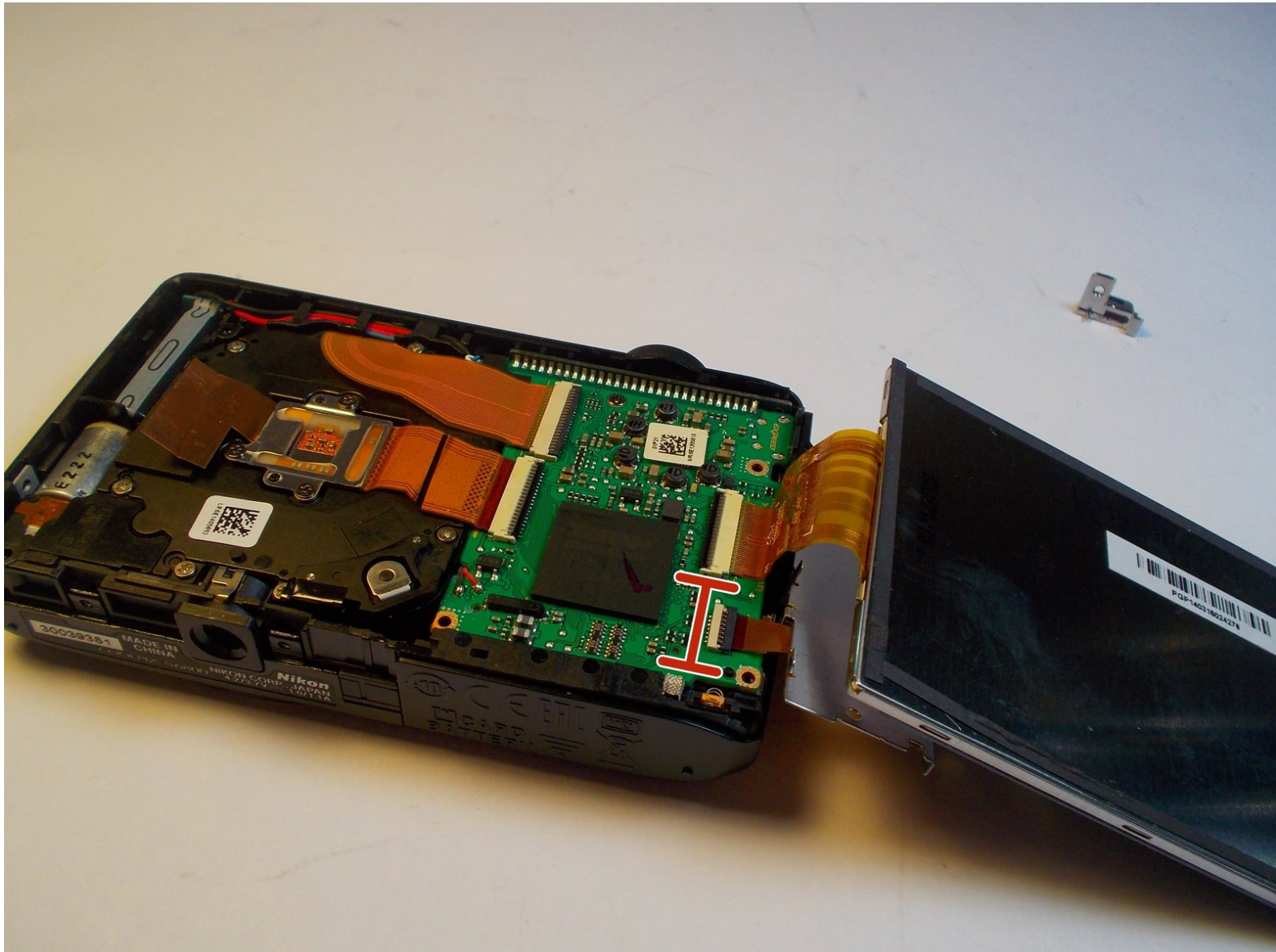




Nikon Coolpix S6800 Button Assembly Replacement

This guide is to replace the button assembly.

Written By: sam ford



INTRODUCTION

This guide will allow you to disassemble the camera to the point where the button assembly can be replaced, help you replace it and provide direction for reassembly.



TOOLS:

- [Magnetic Project Mat](#) (1)
 - [Phillips #00 Screwdriver](#) (1)
 - [iFixit Opening Tools](#) (1)
-

Step 1 — Midframe



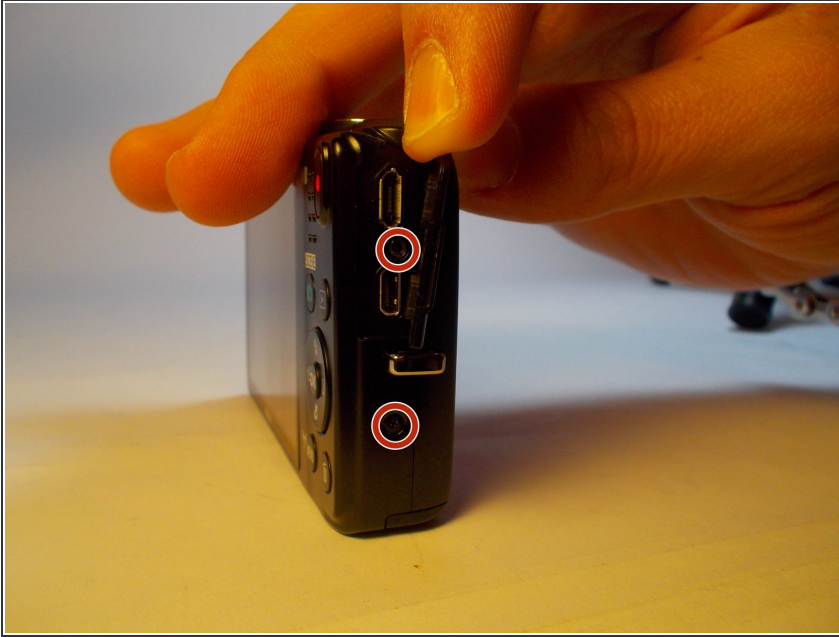
- Turn the camera upside down and locate the two, black screws.
- Using the Philips #00 Screwdriver, remove each screw.

Step 2



- Rotate the camera to the left side and remove the two, black, #00 Philips screws.

Step 3



- Rotate the camera to the right side and remove the two, black, #00 Philips screws.

⚠ The last screw that you remove will catch as the cover is trying to pop off. Try to keep the cover in place to allow for the screw to just fall out. Once you remove the screws, be careful not to lose the screws for reassembly.

Step 4



- Carefully remove the back plate from the body of the camera.

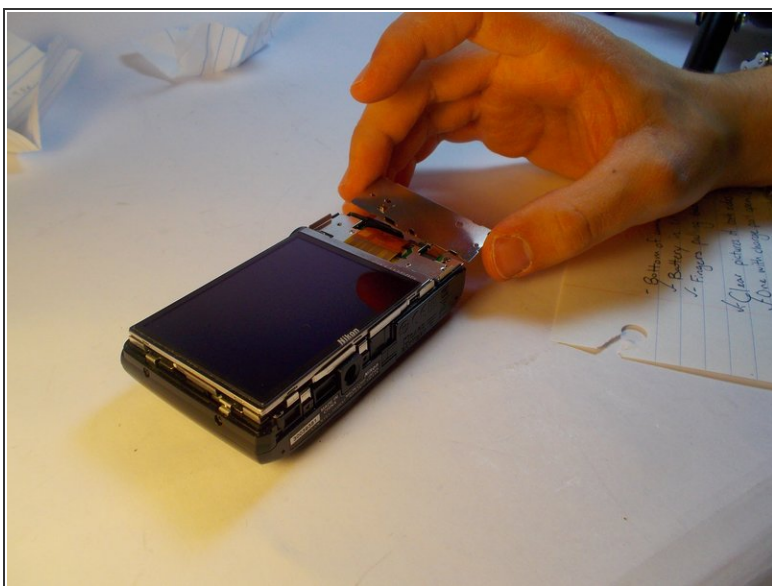
ⓘ All of the external screws are black with rounded heads.

Step 5



- Using the Philips #00 Screwdriver, remove the two screws that are holding the keypad.

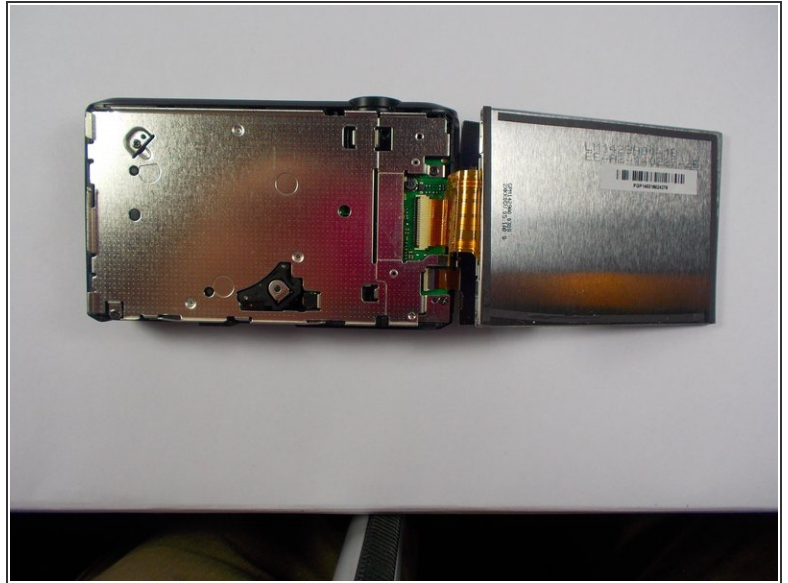
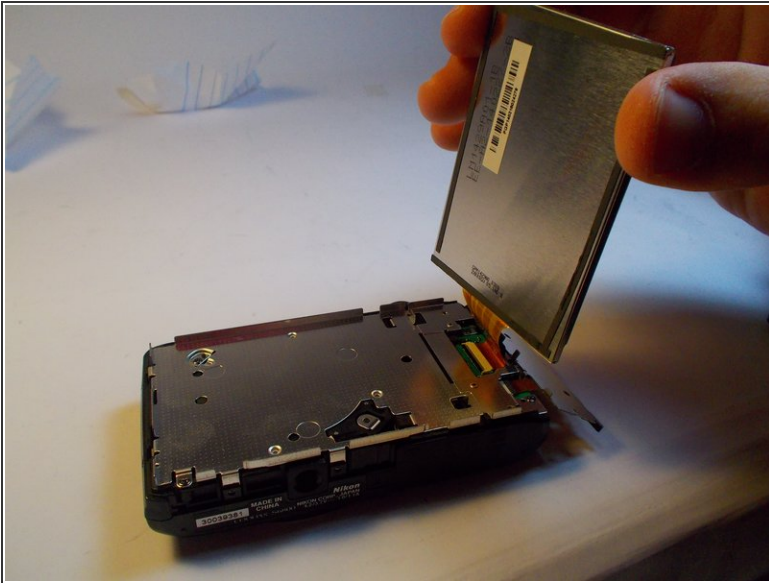
Step 6



- Flip the keypad away from the camera

⚠ Be careful with the electric ribbon. Do not crease it or tug on it. Gently flip it away from the camera.

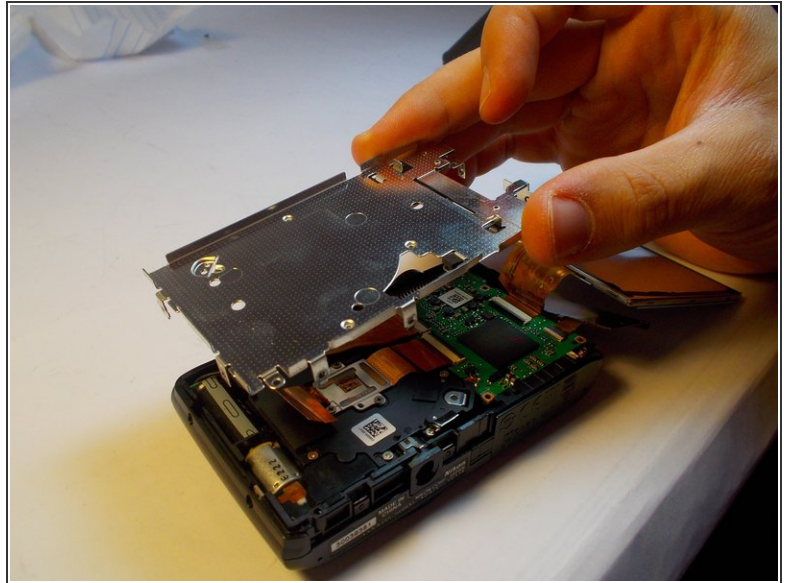
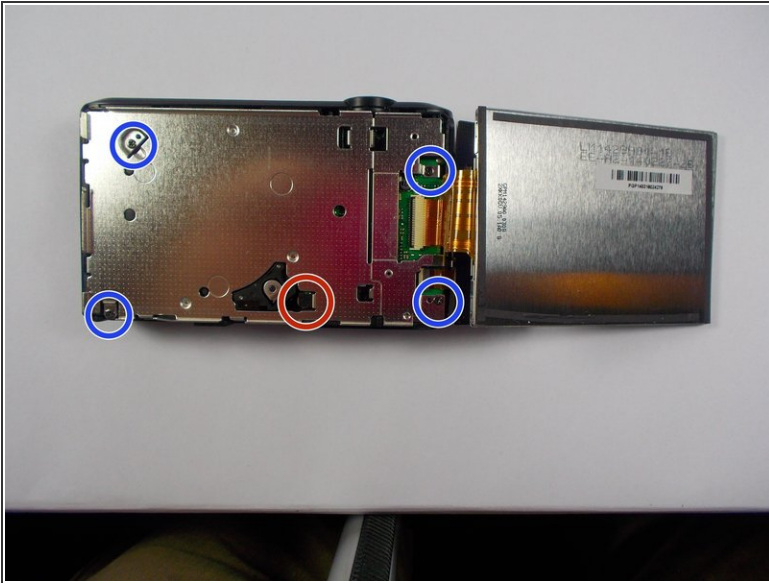
Step 7



- Gently pull the display away from the camera body.
- Fold the display away from the camera

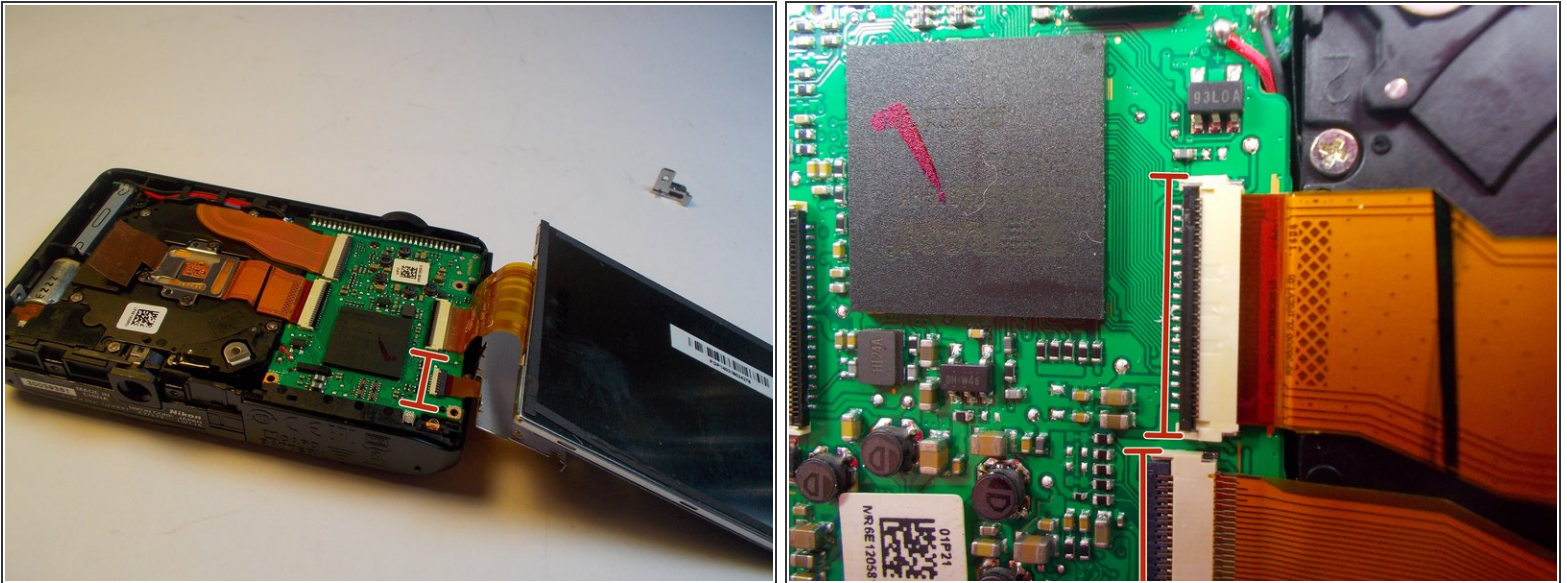
- ⚠ Be careful with the electric ribbon. Do not crease it or tug on it. Gently flip it away from the camera.
- ⚠ Be careful with the display. Do not press on it or drop it.

Step 8



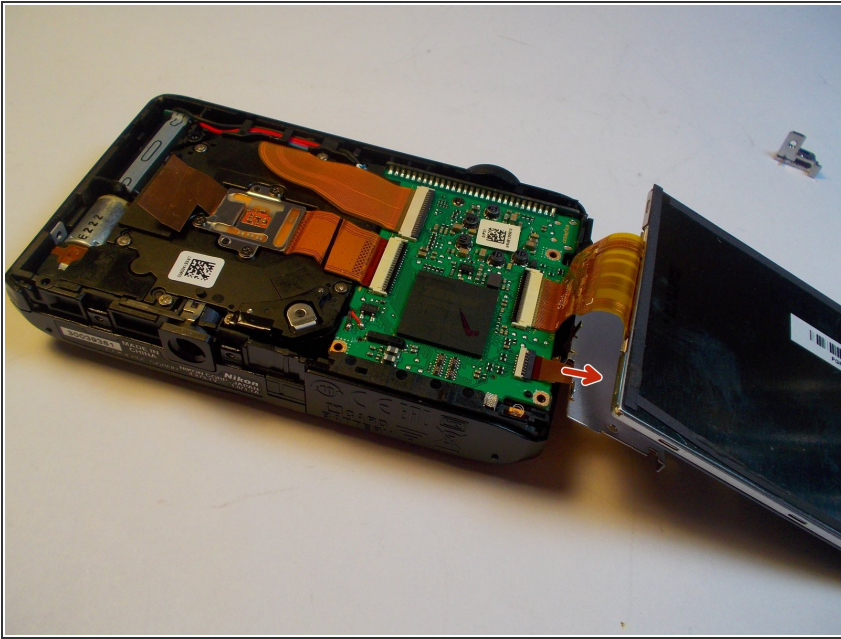
- Remove the visible midframe screws.
 - There is a screw beneath the foam square that must be removed as well.
 - The screw holding the silver wrist-strap loop on the side of the camera must also be removed.
 - Gently lift the midframe up and out of the device.
- ⚠ Be careful moving the midframe away from the ribbons don't force it, gently slide the plate away from the ribbons.

Step 9 — Button Assembly



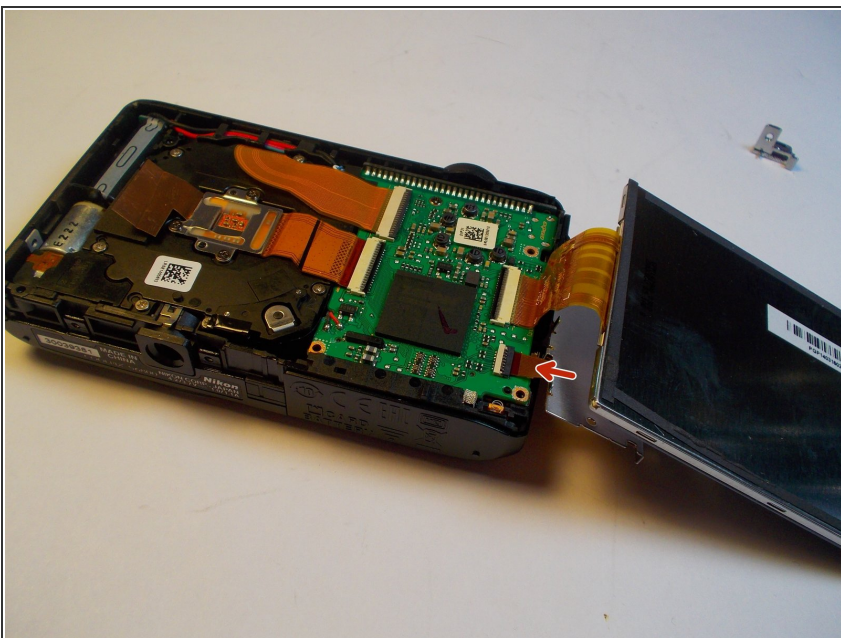
- Flip up the little tan tab on the connector of the button pad's ribbon.
- ⚠ **Don't use a metal object for this step.** A fingernail will do. Simply slide your fingernail under the lip and lift slowly. You may need to lift in different areas along the tab to get it all the way up.
- ⓘ In the second image the top tab is open while the bottom is closed as an example of what the two positions look like.
- ⓘ The tab is reversed for the button pad, the tan part is the tab while the black is the connector

Step 10



- Gently pull out the ribbon. It should come out easily, don't force it.

Step 11



- Take the new button pad and orient it the same way as the old pad before it was removed.
 - Gently slide the end of the electric ribbon into the connector.
 - To make sure that the ribbon is completely in the connector give it a firm push but don't force anything. The ribbon should slide in with only a little resistance.
- ⚠ The ribbon is flexible so it may bend but take care NOT to crease it.

To reassemble your device, follow these instructions in reverse order.