



# Nikon Coolpix S7000 LCD Display Replacement

This guide will allow you to remove the LCD display that may be cracked or unresponsive and replace it with a new LCD display.

Written By: Jonathan Manigo II



---

## INTRODUCTION

This guide will allow you to remove the LCD display that may be cracked or unresponsive and replace it with a new LCD display.

---

### **TOOLS:**

- [JIS Driver Set](#) (1)
-

## Step 1 — LCD Display



- Turn the camera upside down and remove the two 40mm JIS screws by using a JIS J000 screwdriver.

## Step 2



- Turn camera on its left side and remove the two 40mm JIS screws by using a JIS J000 screwdriver.

### Step 3



- Turn the camera on its right side and remove the two 40mm JISscrews by using a JIS J000 screwdriver.

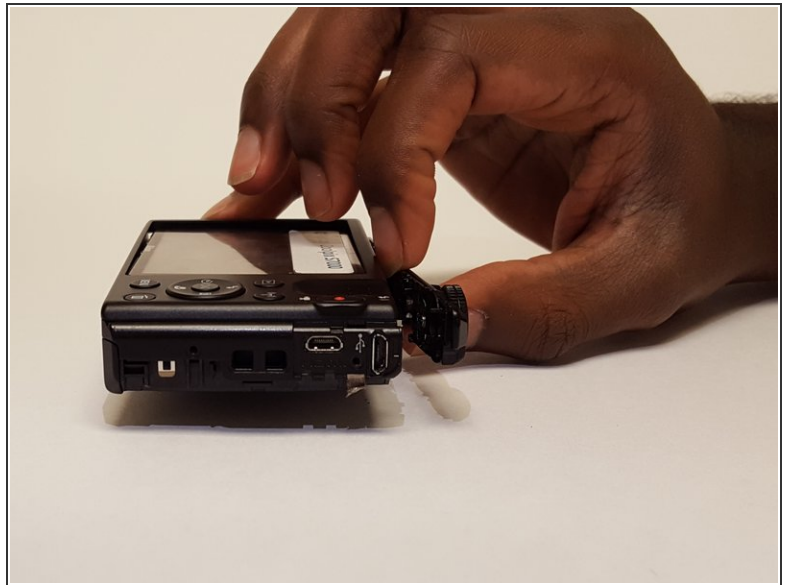
### Step 4



- Carefully remove front cover of the camera.

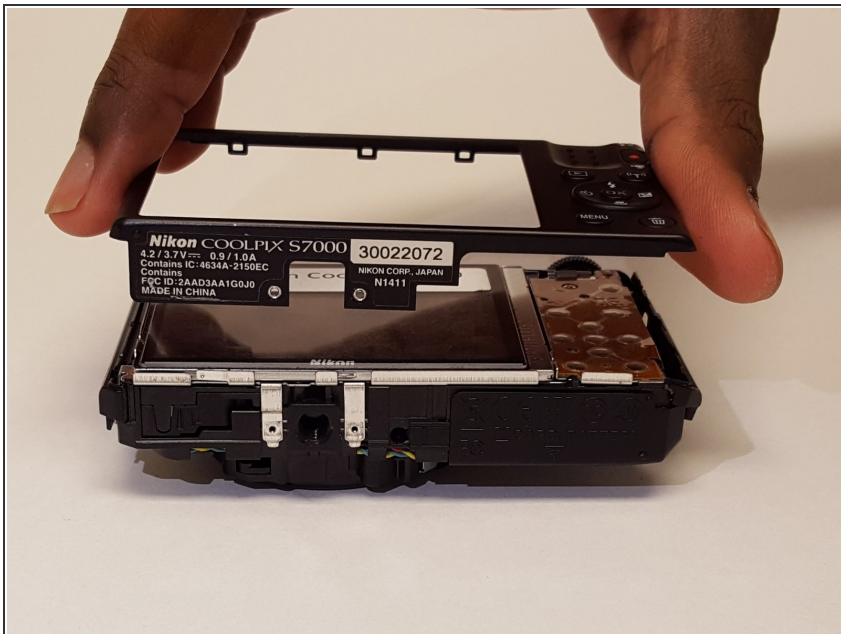


## Step 5



- Carefully remove the right side of the camera.
- ❗ In order to do so, you will have to lift up on the edge of the cover that has the shutter button on it. (Look at next photo to see how it looks)

## Step 6



- Gently remove the back cover of the camera.

## Step 7



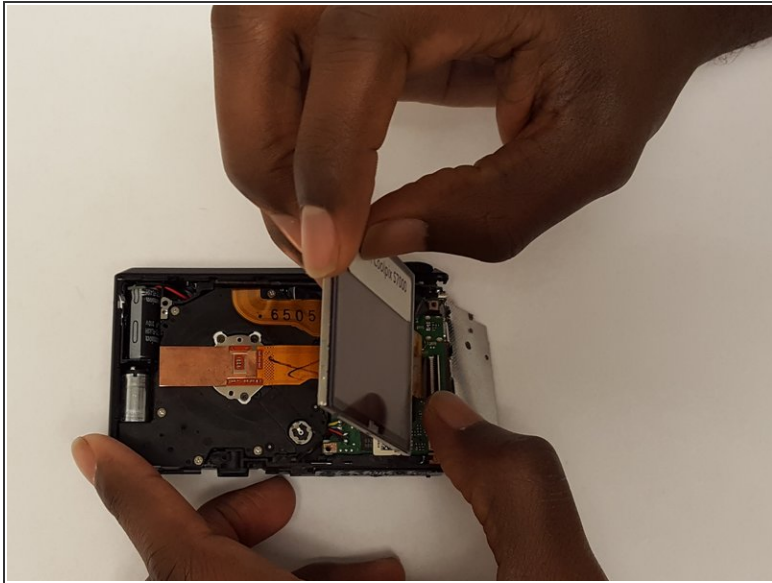
- Remove the two 20mm JIS screws using a JIS J000 screwdriver. They are responsible for keeping the keypad in place.

## Step 8



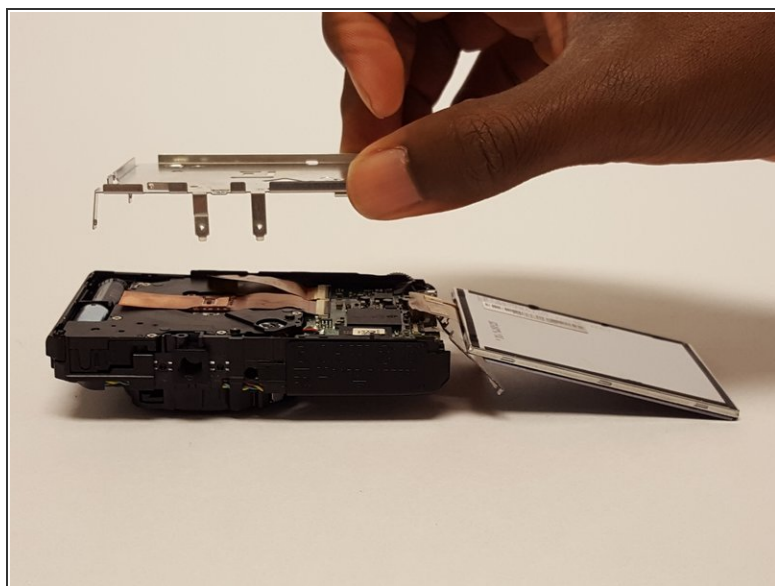
- Flip the keypad up and over the camera.

## Step 9



- Carefully pull the LCD display up from the camera.
- Fold the LCD display over the camera.

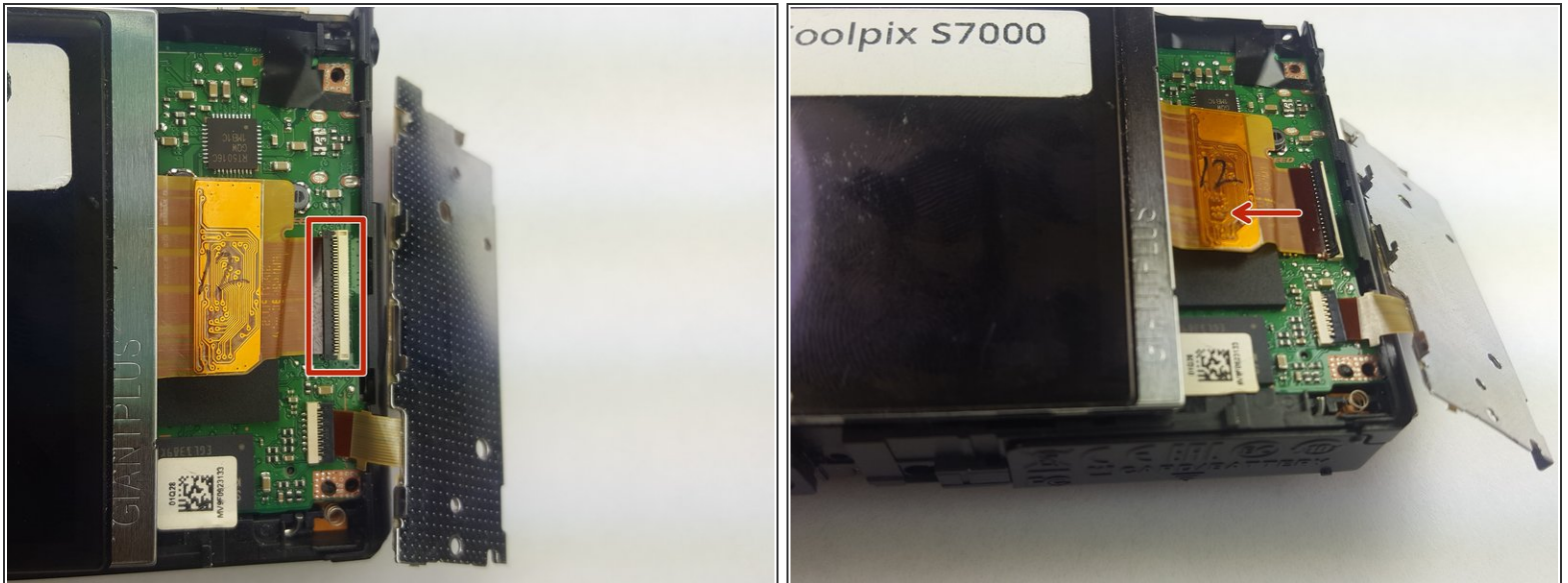
## Step 10



- Using a JIS J000 screwdriver, remove the five 30mm JIS screws identified in the metal frame.
- Once all of the screws are removed from the metal frame, gently lift up and remove the metal frame from camera.



## Step 11



- In order to disconnect the LCD display ribbon from the zero insertion force (ZIF) connector we must first flip up the little black tab with your fingernail.
  - Gently pull the out the LCD display ribbon from the connector. It should slide out pretty easy.
- ⚠ For this step, avoid using a metal object. However, you can use a finger nail to complete task.

To reassemble your device, follow these instructions in reverse order.