



Nikon Coolpix S7000 Shutter Button Replacement

This guide will show you how to repair the individual parts that comprise the Nikon Coolpix S7000 shutter button.

Written By: Nicholas Leon-Schetina



INTRODUCTION

If you notice the camera shutter button isn't depressing or is too easily pressed, you may have to adjust or replace the button or button assembly. This guide will show you how to repair the individual parts that comprise the shutter button.

TOOLS:

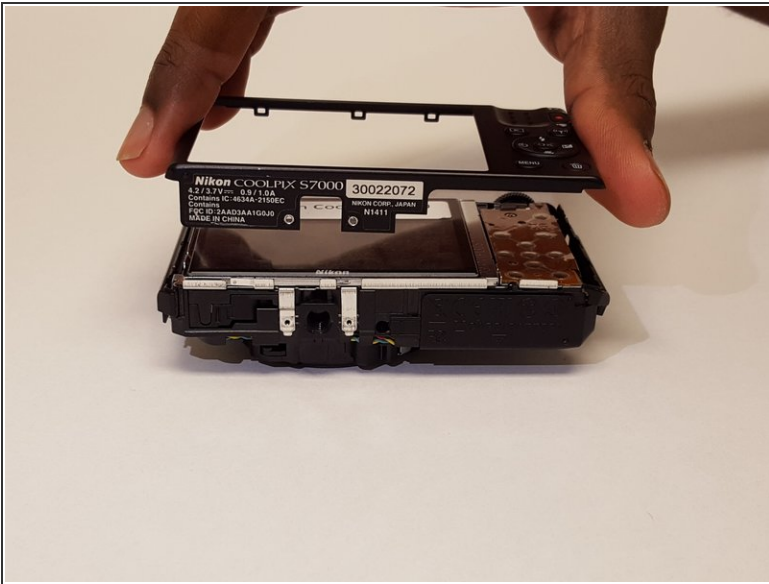
- [JIS Driver Set](#) (1)
-

Step 1 — Shutter Button



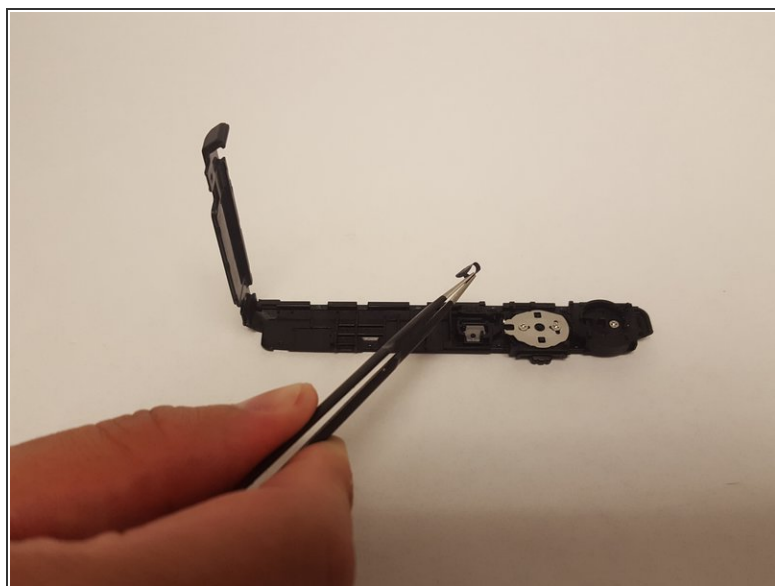
- Remove the outer frame of the camera by unscrewing the screws around its sides with a JIS J000 screwdriver.
- Screw locations.

Step 2



- Remove outer camera frames by carefully pulling the frame apart from the body of the camera.

Step 3



- Once the shutter button assembly is removed from the camera shell, carefully remove the black tape on the underside of the metal plate.
- Black tape.
- ⓘ Do not discard the tape as you will reapply it when putting the shutter assembly back together.

Step 4



- Unscrew the two screws on each side of the metal plate to remove the plate and springs underneath it.
 - Push the button through the assembly to release it and then carefully remove the button cover to reveal the coiled spring and bottom cover.
 - Locations of the two screws.
- ☒ Be very careful not to lose the two metal plate springs and the coiled spring when disassembling. A slow and steady hand will help prevent the springs from ejecting.

To reassemble your device, follow these instructions in reverse order.