



# Nikon Coolpix S8200 CCD Lens Replacement

Replacing the CCD lens inside of the camera, which is the part that actually takes the picture.

Written By: Nelson Antiposti



## INTRODUCTION

If you have continually received a lens error on your camera and restarting it doesn't help, then you need to replace the CCD lens. This guide walks you through the steps necessary to replace the CCD lens on the Nikon Coolpix S8200.



### TOOLS:

- [Phillips #00 Screwdriver](#) (1)
  - [Flathead 3/32" or 2.5 mm Screwdriver](#) (1)
-

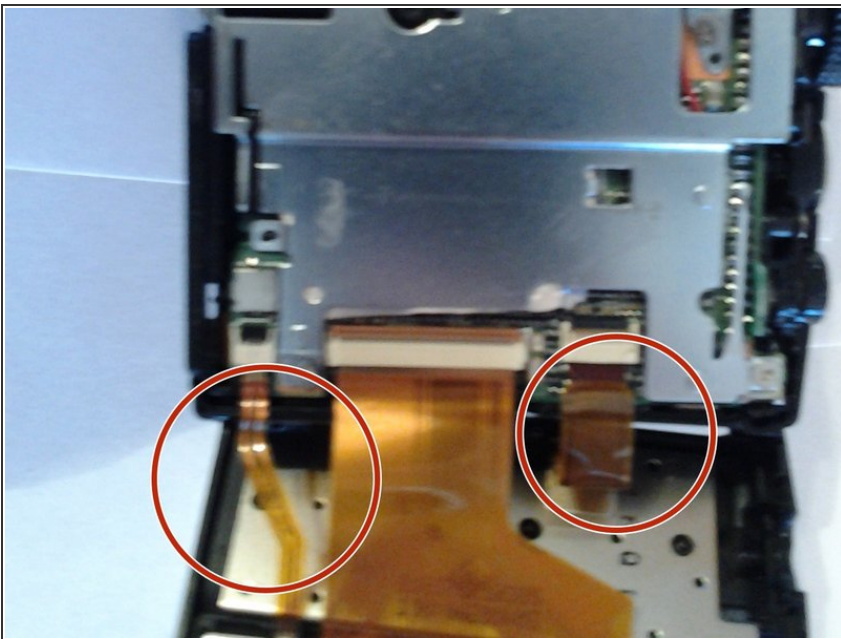
## Step 1 — CCD Lens



- First you must unscrew the back case by removing the two screws found on the bottom left and right of the camera as shown in the image.

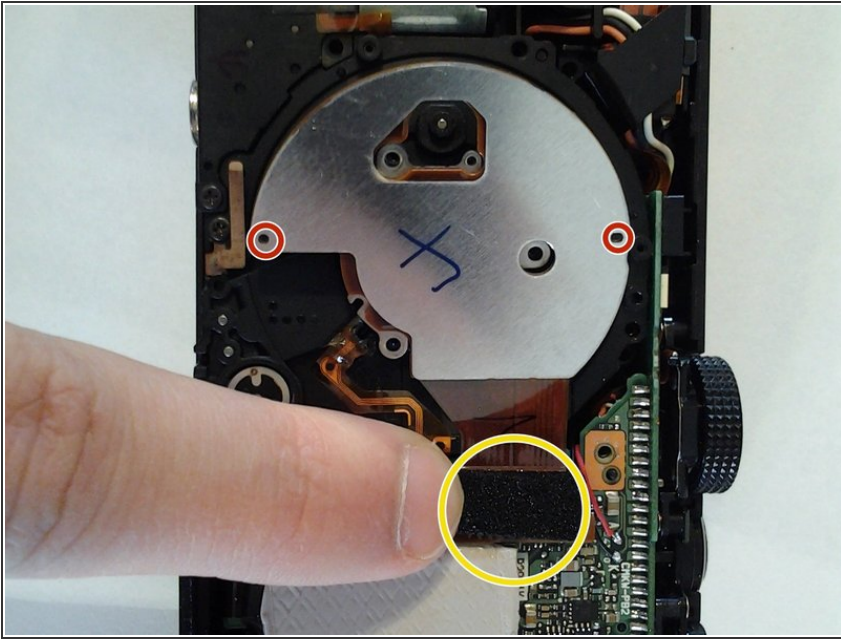
⚠ Be careful not to remove any extra screws.

## Step 2



- Once the back is removed, Do Not remove the ribbon cables shown in the within the red circles on the image.

## Step 3



- Unscrew the two screws around the silver disk-like part indicated by the red circles on the image and then remove them.
- Next gently remove the black strap indicated by the yellow circle on the image.
- ⓘ The black strap can easily snap back on for reassembly.

To reassemble your device, follow these instructions in reverse order.