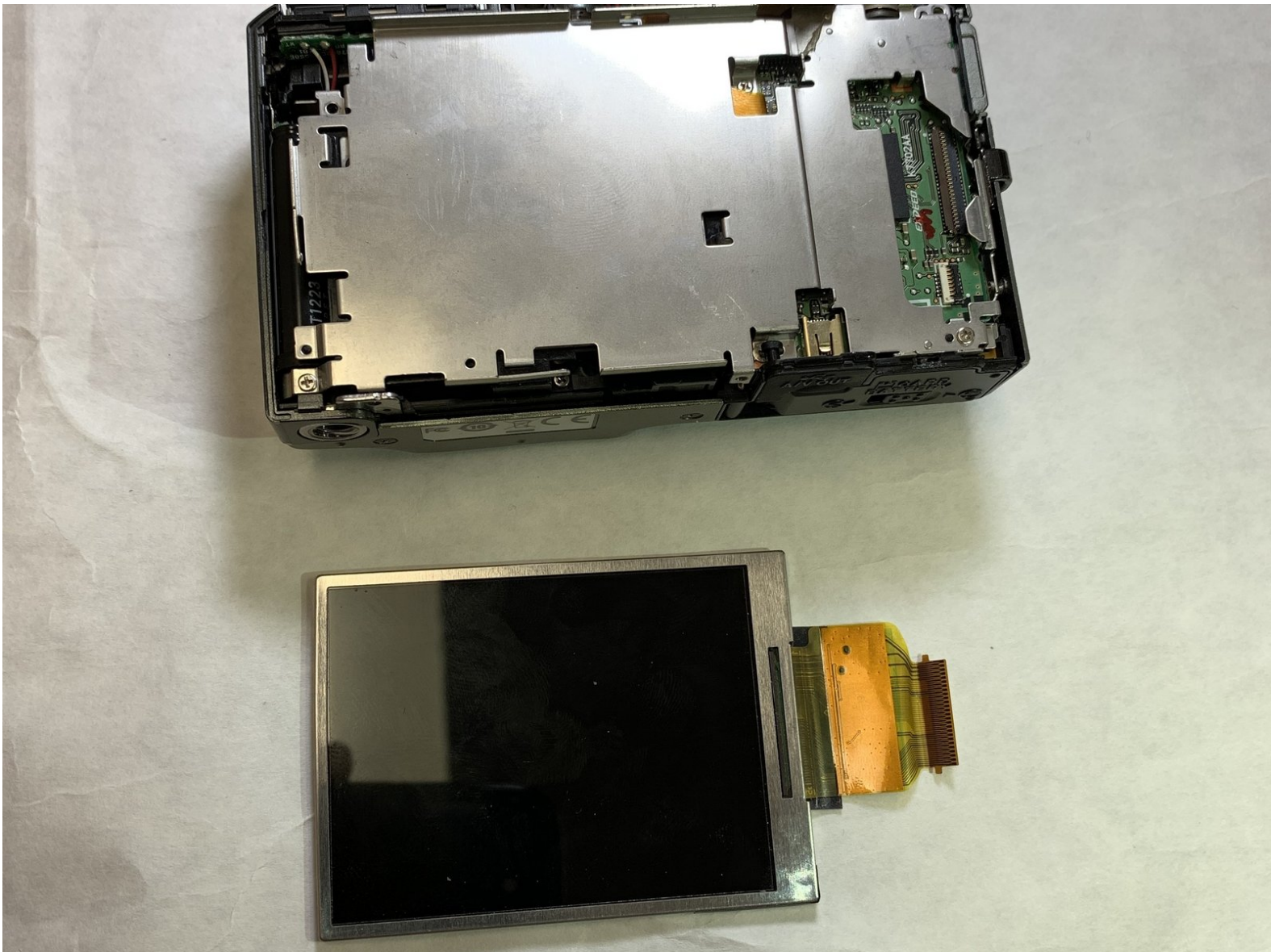




Nikon Coolpix S9050 LCD Screen Replacement

This guide is to replace the LCD Screen on the Nikon Coolpix S9050

Written By: Kyle Gildner



INTRODUCTION

Overtime, the components in a camera are likely to fail or become faulty. One component that may become faulty overtime is the screen. If your camera is not properly displaying the images you've taken or if there are dead pixels on your screen, the screen may need to be replaced. This guide will assist you in replacing the LCD Screen on the Nikon Coolpix S9050.



TOOLS:

- [Phillips #000 Screwdriver](#) (1)
- [Spudger](#) (1)



PARTS:

- [Nikon Coolpix S9050 LCD screen](#) (1)

Step 1 — Menu Wheel and OK Button



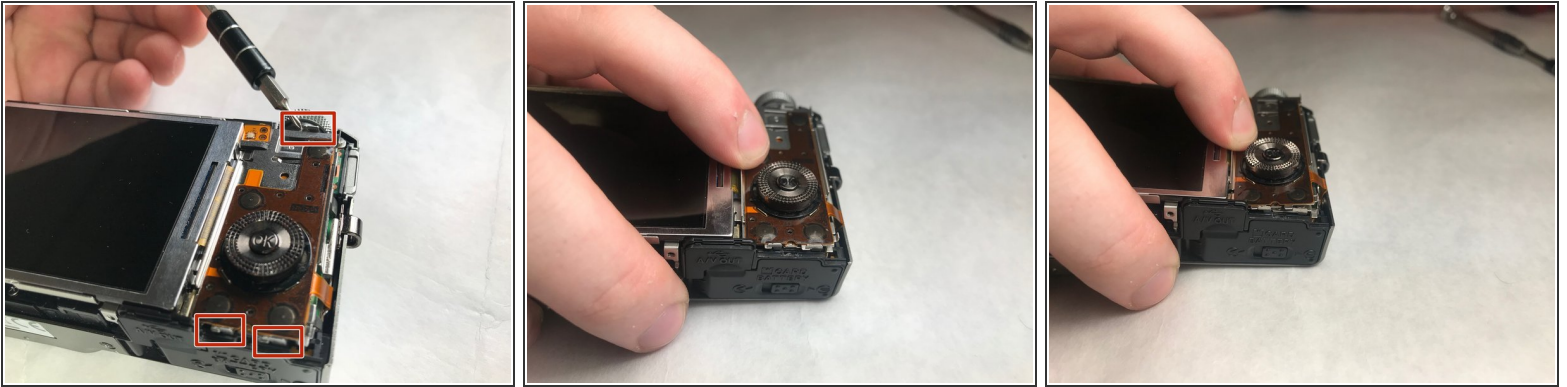
- Remove the screws. There are two on each side, and four on the bottom. The black screws are 3.2 mm Phillips #000. The silver screws are also 3.2 mm Phillips #000.

Step 2



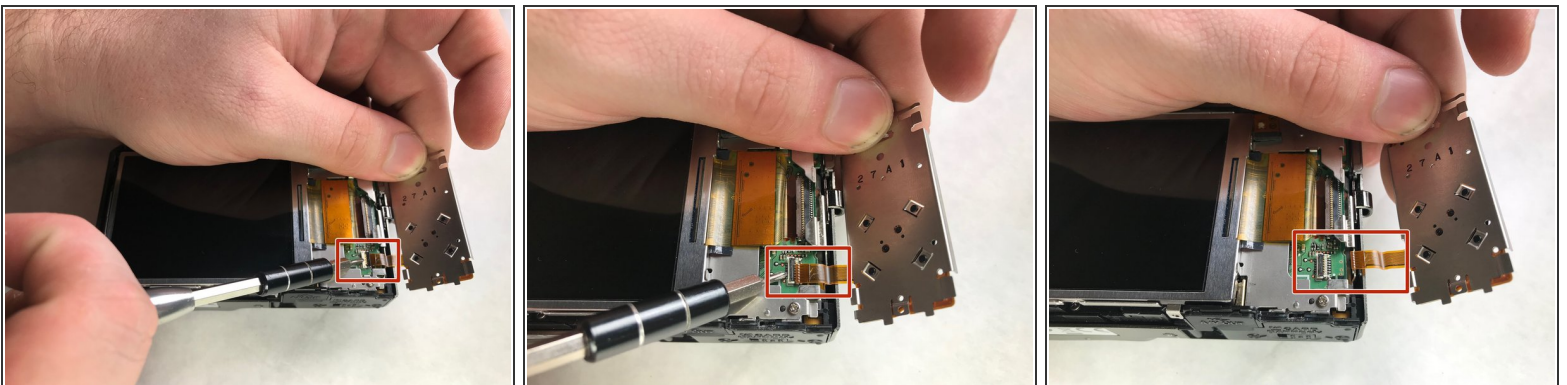
- Remove the screen housing and trim piece.

Step 3



- Press down and pull the Menu Wheel/OK Button panel towards the screen. This will release the panel from the slots.

Step 4



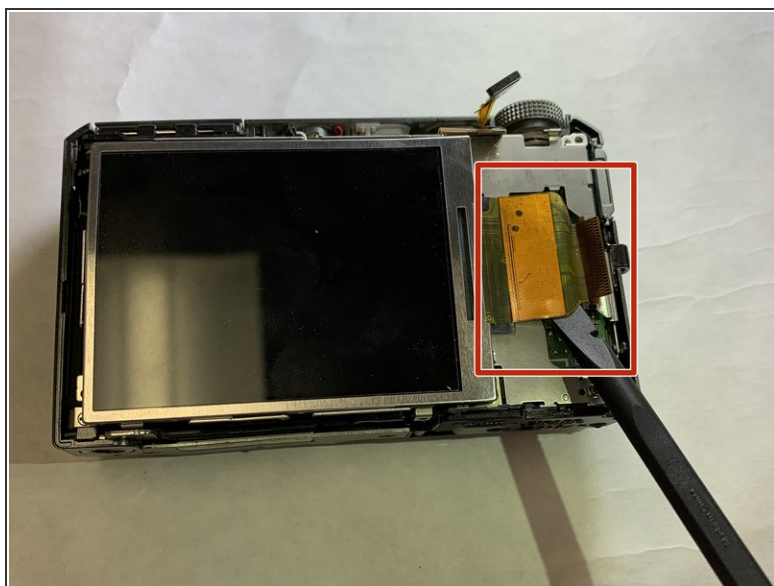
- Lift up on the black plastic tab(zero insertion force connector-ZIF) and gently pull the panel out to detach the ribbon cable from the camera body.

Step 5 — LCD Screen



- Remove the silver 3.2 mm Phillips #000 screw on the corner of the device to remove the screen.

Step 6



- Gently remove pin connector using the spudger to disconnect the screen.

To reassemble your device, follow these instructions in reverse order.