



Nikon Coolpix S9050 Motherboard Replacement

This guide will show how to remove and replace the Motherboard on the Nikon Coolpix S9050

Written By: Kyle Gildner



INTRODUCTION

The motherboard is the central hub for communication between all of the components in a device. If more than one component is failing to work, the motherboard may be faulty and needs to be replaced. This guide will assist you in replacing the motherboard on the Nikon Coolpix S9050.



TOOLS:

- [Phillips #000 Screwdriver](#) (1)
 - [Spudger](#) (1)
-

Step 1 — Menu Wheel and OK Button



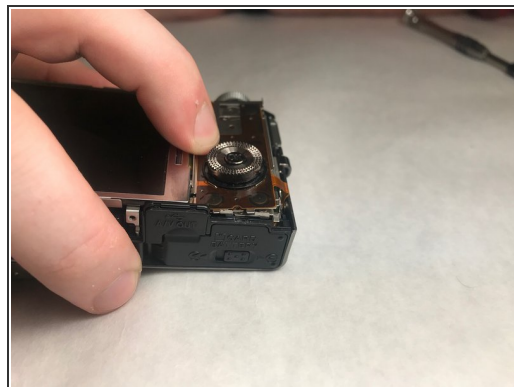
- Remove the screws. There are two on each side, and four on the bottom. The black screws are 3.2 mm Phillips #000. The silver screws are also 3.2 mm Phillips #000.

Step 2



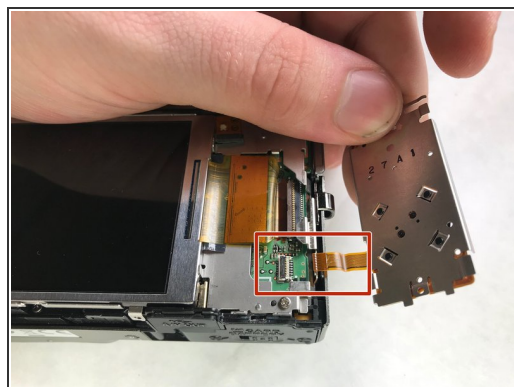
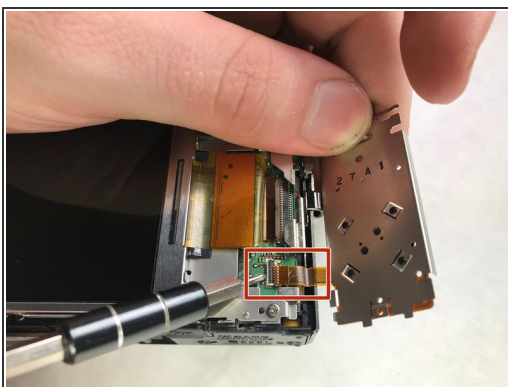
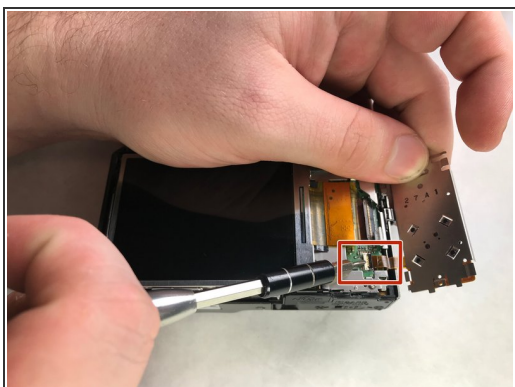
- Remove the screen housing and trim piece.

Step 3



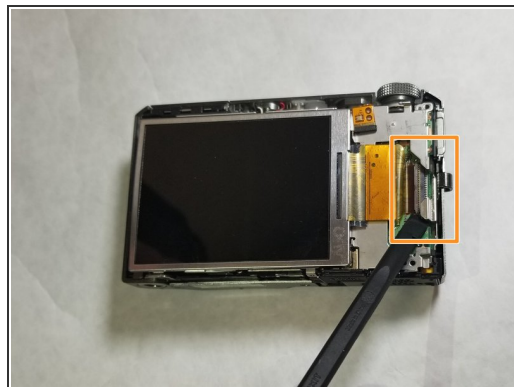
- Press down and pull the Menu Wheel/OK Button panel towards the screen. This will release the panel from the slots.

Step 4



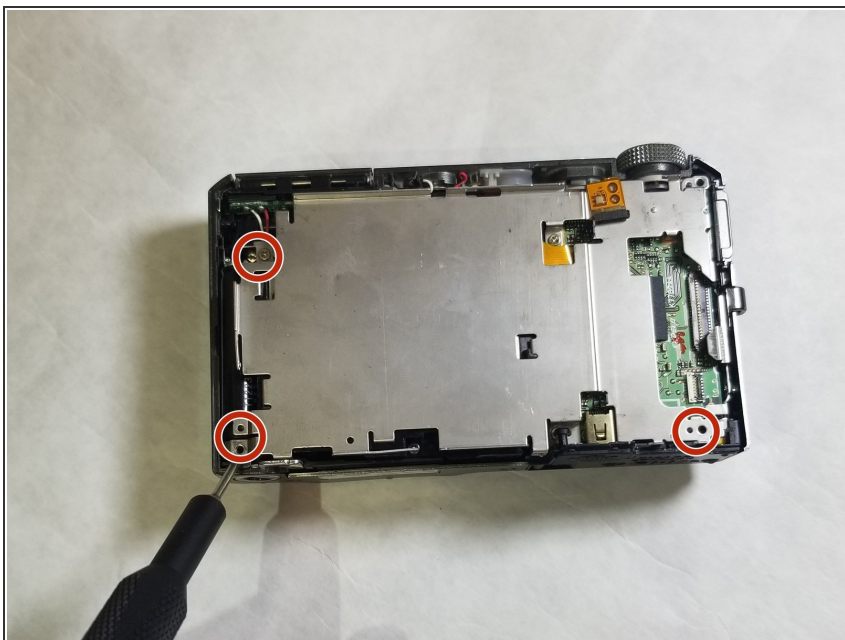
- Lift up on the black plastic tab(zero insertion force connector-ZIF) and gently pull the panel out to detach the ribbon cable from the camera body.

Step 5 — Motherboard



- Remove the screws surrounding the screen using the Phillips #000 screwdriver.
- Use the spudger to detach the display ribbon cable.

Step 6



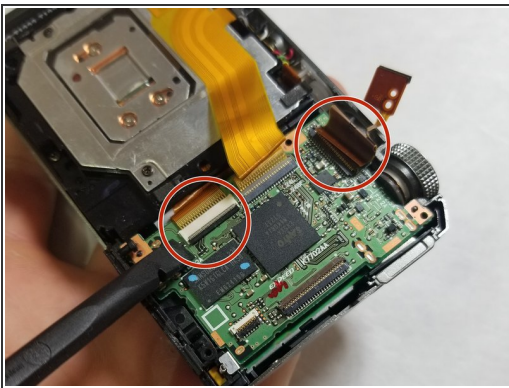
- Remove the silver 3.2 mm Phillips #000 screws surrounding the metal panel.

Step 7



- Remove the silver 3.2 mm Phillips #000 screws from the side panel.

Step 8



- After removing metal panel, use the spudger to detach the the 3 ribbon wires attached to the motherboard. Now, remove the silver 3.2 mm Phillips #000 screws holding the motherboard in place. Lastly, lift the board from the top of the camera and pull board upwards, pulling out the AV port with it.

To reassemble your device, follow these instructions in reverse order.