



Nikon Coolpix S9700 Flash Housing Replacement

Keep the flash down when not in use with a new flash housing.

Written By: Matt Staubus



INTRODUCTION

If your flash has become worn out from use and is not staying down, you might need a new flash housing. Performing this repair does not require a great deal of knowledge of the S9700, but will require a steady hand.

TOOLS:

- [Phillips #000 Screwdriver](#) (1)
 - [iFixit Opening Tools](#) (1)
-

Step 1 — Battery



- Press the ON/OFF button to power off the S9700.

⚠ Not doing so can damage the S9700 or cause electric shock.

Step 2



- Place the S9700 upside down
- Place your finger on the battery compartment cover and gently push toward the front of the S9700.
- The cover will open up by itself.

Step 3



- Push the yellow tab inside the battery compartment in the direction of the arrow. This will allow the battery to spring up.

Step 4



- Grab the battery and pull out.

Step 5 — Flash Housing



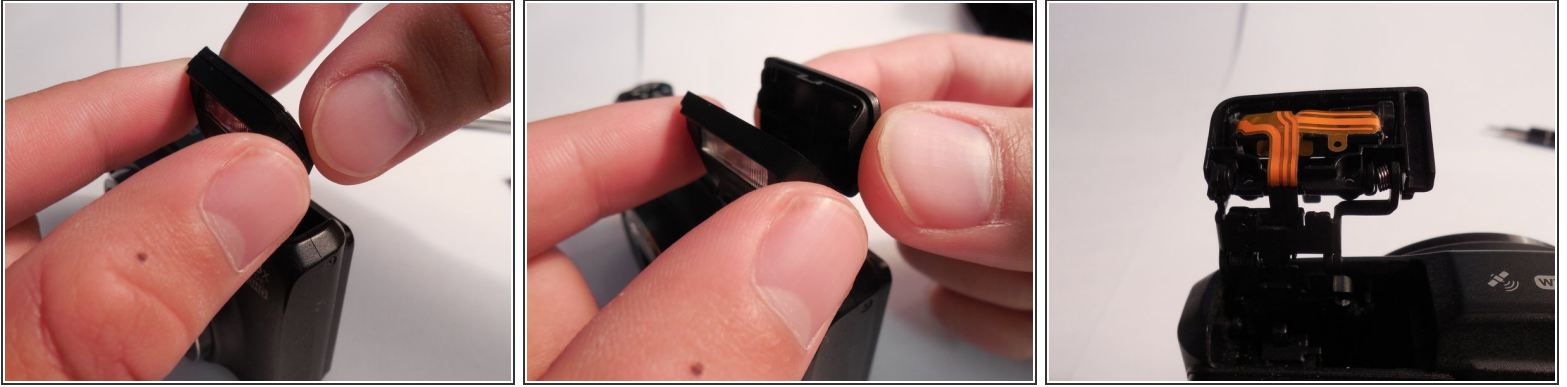
- Place your fingernail or a plastic opening tool in the space between the camera housing and the flash housing.
- Carefully pry up on the flash housing. It will pop up automatically.

Step 6




- Remove the two 4-mm J000 screws positioned at the bottom of the flash housing.
- The housing will now be hanging only by the ribbon supplying power.

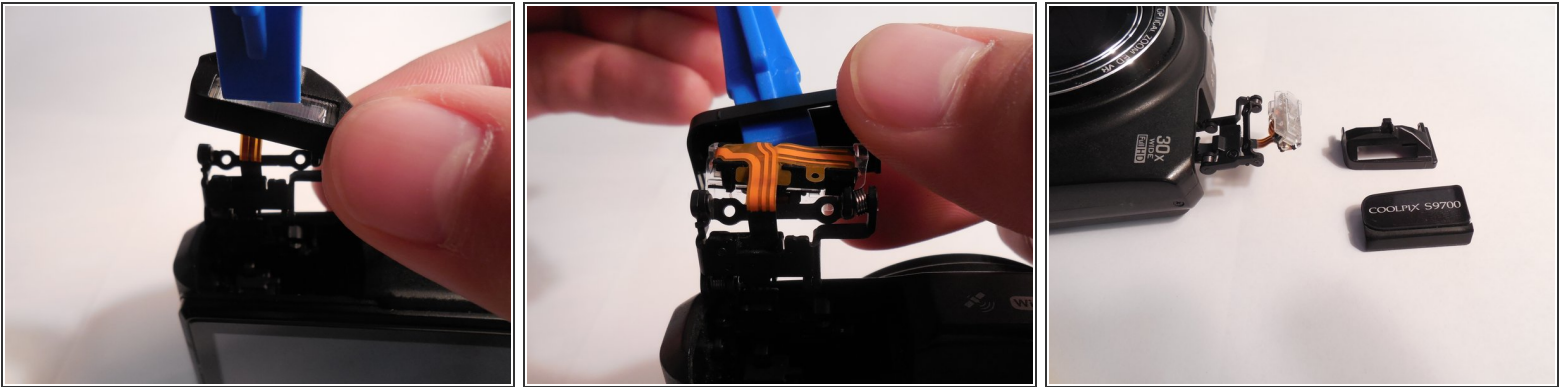
Step 7



- Using your fingers or plastic opening tool, remove the back half from the front half of the flash housing. The front half will stay on.

 Sudden or large force can rip the flash power supply off.

Step 8



- Place a plastic opening tool on the clear lens of the flash.
- Gently push on the lens to remove the front half of the flash housing.

To reassemble your device, follow these instructions in reverse order.