



# Nikon D3000 LCD Screen Cover Replacement

This step-by-step guide will allow you to replace the protective LCD screen cover on your Nikon D3000.

Written By: Flor



## INTRODUCTION

If your LCD screen cover is broken, damaged, or scratched, then you will find this guide beneficial. The camera will need to be partially disassembled in order to replace the clear cover that protects the LCD screen.



### TOOLS:

- [Phillips #00 Screwdriver](#) (1)
- [Masking Tape](#) (1)
- [Heat Gun](#) (1)
- [iFixit Opening Tools](#) (1)
- [Spudger](#) (1)



### PARTS:

- [Nikon D3000 LCD Screen Cover](#) (1)

## Step 1 — LCD Screen Cover



- Remove three 3 mm x 2.5 mm Phillips head screws from the bottom right back of the camera bottom.
- Remove one 3 mm x 5.5 mm Phillips head screws from the bottom left of the camera bottom.

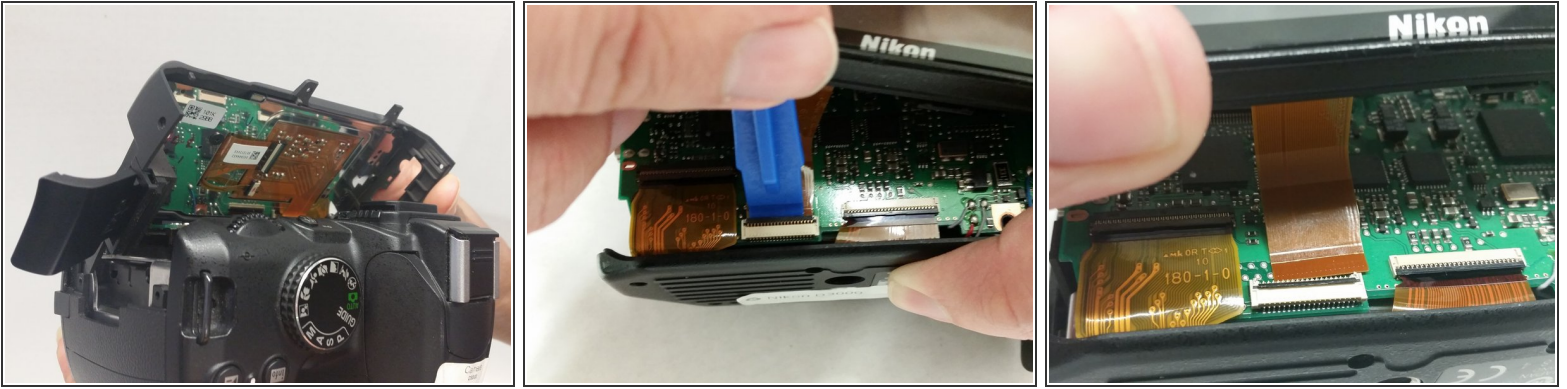
## Step 2



- Remove two 3 mm x 5.5 mm Phillips head screws from either side of the viewfinder.
- Remove four 3 mm x 5.5 mm Phillips head screws above and below the USB port cover and above and below the SD card slot cover.
- Remove two 3 mm x 4 mm Phillips head screws inside the SD card slot cover.

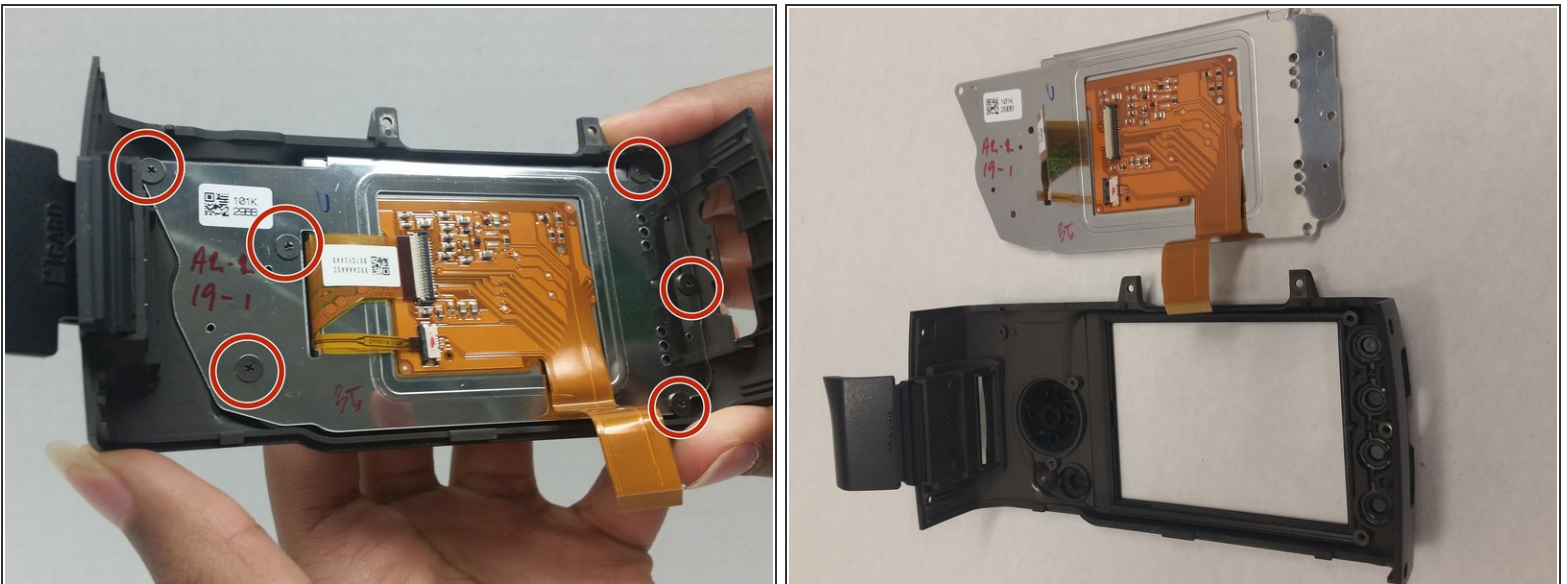


## Step 3



- Gently lift the back of the camera off, starting with the top first.
- Lift off the bottom slightly to expose the ribbon connector connecting the back of the LCD screen to the motherboard of the camera and lift the black tab on the ribbon connector.
- Pull the ribbon away from the connector to disconnect the back panel from the main body of the camera.

## Step 4



- Remove six 5 mm x 4mm head screws, then remove the metal plate from the plastic camera backing.

## Step 5



- ⚠ Tape the buttons down on the front of the plastic camera backing in order to avoid losing them in the process.
- Use a heat gun on the edges of the LCD screen cover in order to loosen the adhesive.
- Use the prying tool to separate the LCD screen cover from the plastic camera backing (the LCD screen cover will come out towards the front).
- Install a new LCD screen cover.

To reassemble your device, follow these instructions in reverse order.