



# Nikon D3000 LCD Screen Replacement

This guide is intended to show the steps necessary to remove and replace the LCD screen.

Written By: Randall Heath



## INTRODUCTION

If you're looking for a simple step-by-step guide to help you replace the LCD screen on your Nikon D3000, this is a great place to start! If the LCD screen has been cracked, chipped or broken, the camera will need to be disassembled before the screen can be replaced.



### TOOLS:

- [Phillips #00 Screwdriver](#) (1)
- [Metal Spudger](#) (1)
- [Masking Tape](#) (1)
- [Spudger](#) (1)
- [iFixit Opening Tools](#) (1)



### PARTS:

- [Nikno D3000 LCD Screen](#) (1)

## Step 1 — LCD Screen



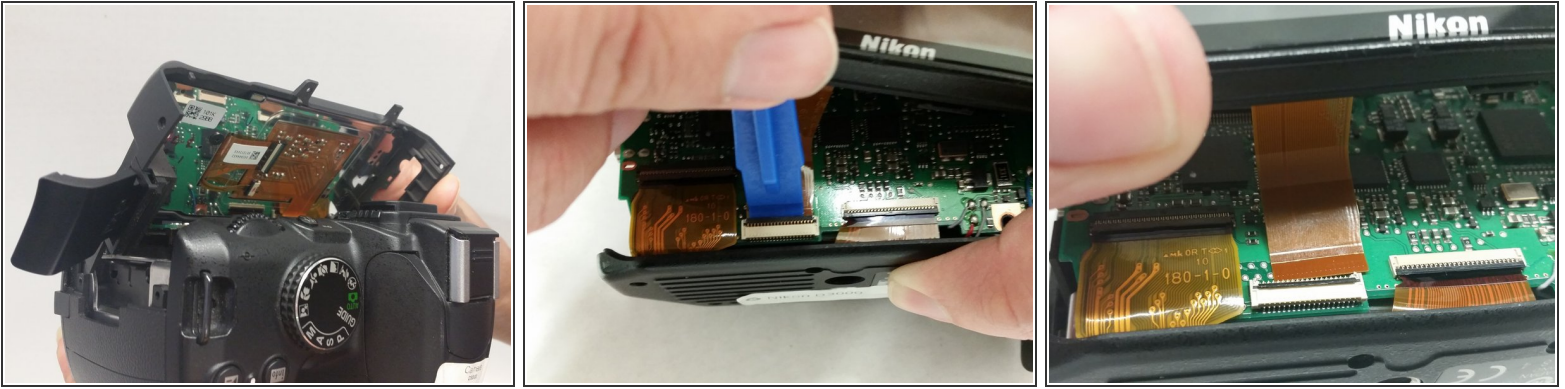
- i** Removal of the screws from the bottom will aid in the removal of the back as it loosens the bottom tabs of the camera back.
- Remove three 3 mm x 2.5 mm Phillips head screws from the bottom right back of the camera bottom.
- Remove one 3 mm x 5.5 mm Phillips head screw from the bottom left of the camera bottom.

## Step 2



- Remove two 3 mm x 5.5 mm Phillips head screws from either side of the viewfinder.
- Remove four 3 mm x 5.5 mm Phillips head screws above and below the USB port cover and above and below the SD card slot cover.
- Remove two 3 mm x 4 mm Phillips head screws inside the SD card slot cover.

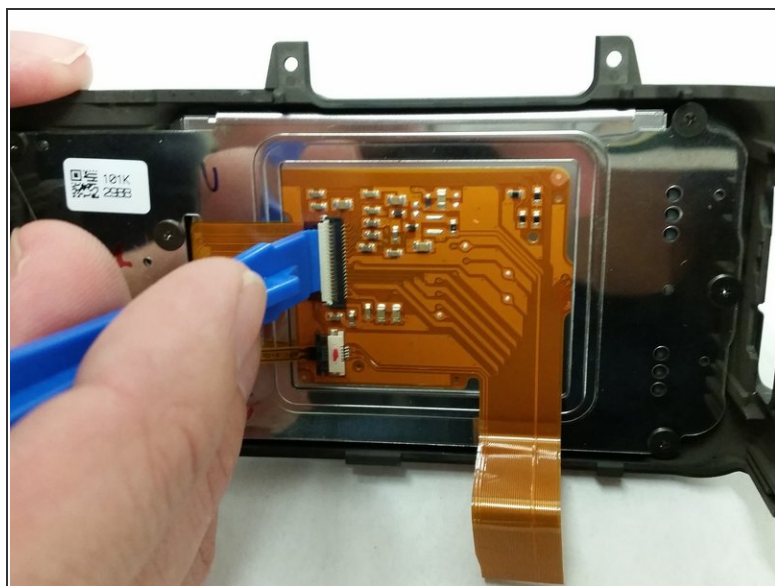
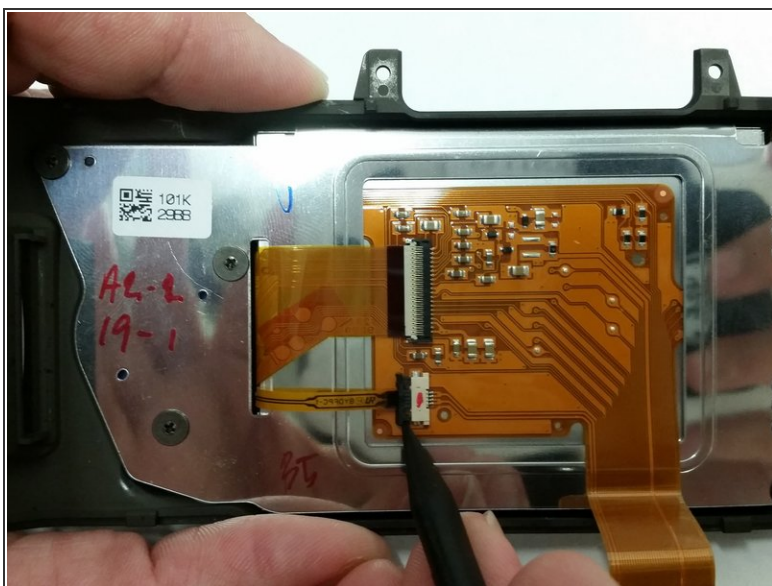
## Step 3



- Gently lift the back of the camera off, starting with the top first.
- Lift off the bottom slightly to expose the ribbon connector connecting the back of the LCD screen to the motherboard of the camera and lift the black tab on the ribbon connector.
- Pull the ribbon away from the connector to disconnect the back panel from the main body of the camera.

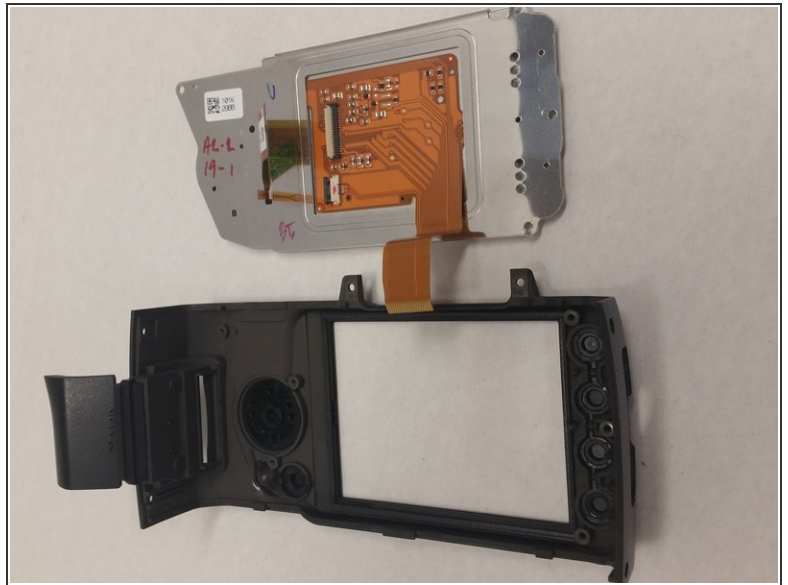
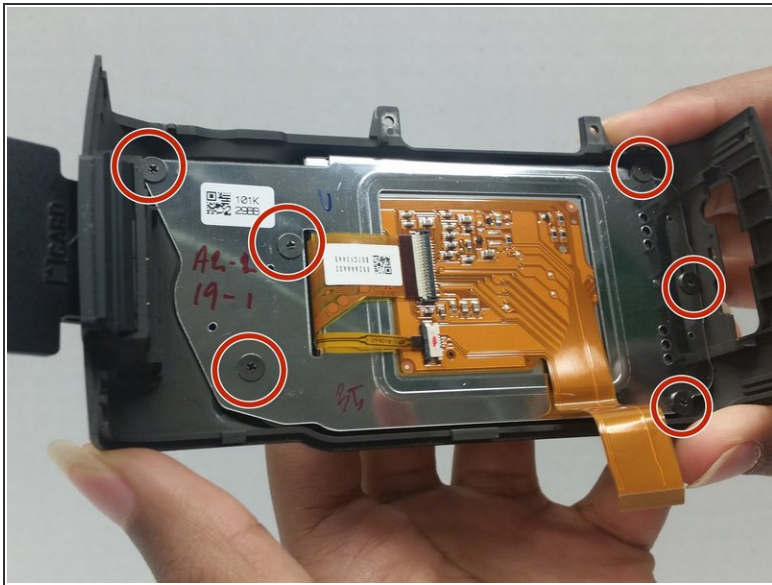


## Step 4



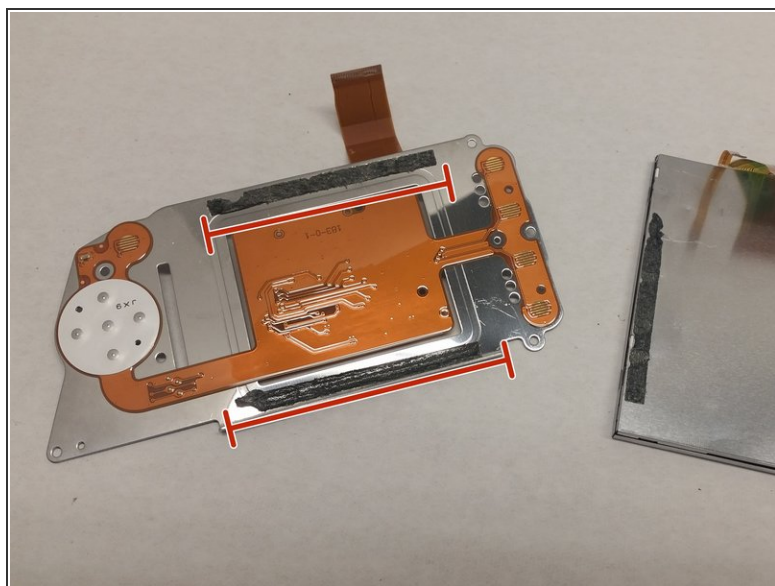
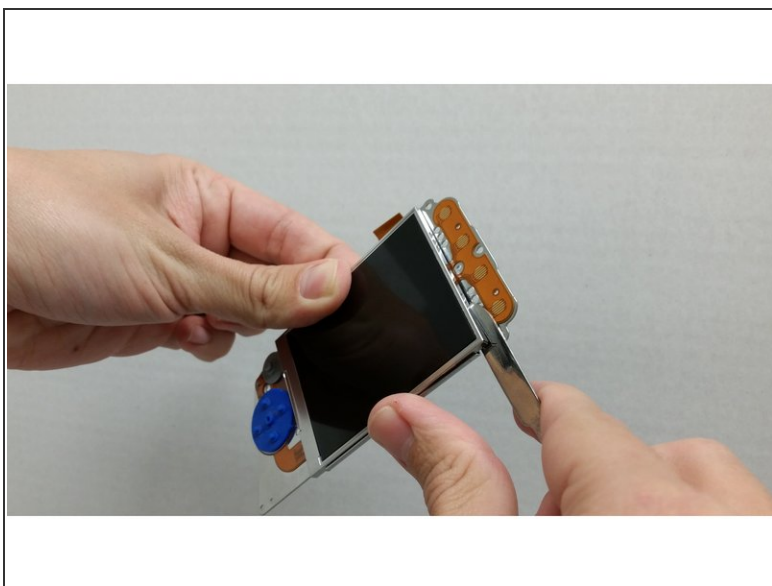
- Use the black plastic spudger to push the black tab towards the lower ribbon. The black tab on the smaller ribbon should slide out of place.
- Lift the white tab on the larger ribbon.
- Gently disconnect both ribbons.


## Step 5



- Remove six 5 mm x 4mm Phillips head screws , then remove the metal plate housing the LCD from the plastic camera backing.

## Step 6



 Cover the old LCD Screen with tape before removing to avoid broken glass if the screen cracks during removal.

- Use the metal spudger to detach the LCD screen from the metal plate that is held down by the adhesive.
- Install new LCD screen

To reassemble your device, follow these instructions in reverse order.