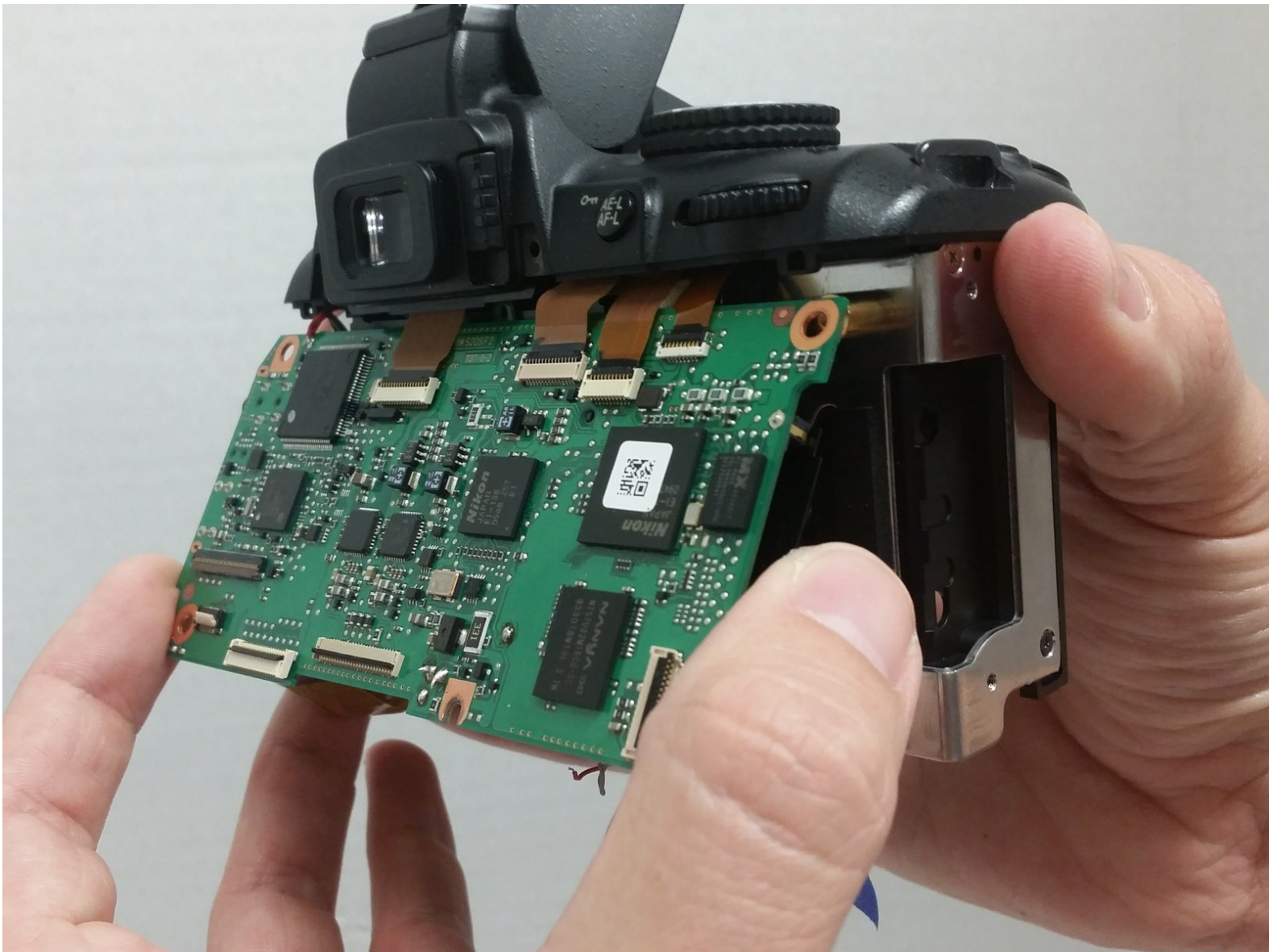




# Nikon D3000 Motherboard Replacement

This guide will walk you through the process to access and remove the motherboard. Soldering is necessary, so this should only be performed by those with the necessary skill.

Written By: Randall Heath



## INTRODUCTION

The motherboard is located behind the LCD and rear panel of the camera. It is relatively accessible but does require the use of a soldering iron to completely disconnect it from the rest of the camera.



### TOOLS:

- [Soldering Iron](#) (1)
- [Solder](#) (1)
- [Phillips #00 Screwdriver](#) (1)
- [iFixit Opening Tools](#) (1)



### PARTS:

- [Nikon D3000 Motherboard](#) (1)

## Step 1 — Motherboard



- Remove six 3 mm x 2.5 mm Phillips head screws from the bottom right of the camera bottom.
- Remove three 3 mm x 5.5 mm Phillips head screws from the bottom left of the camera bottom
- Lift the battery cover and remove two 3 mm x 5 mm Phillips head screws.

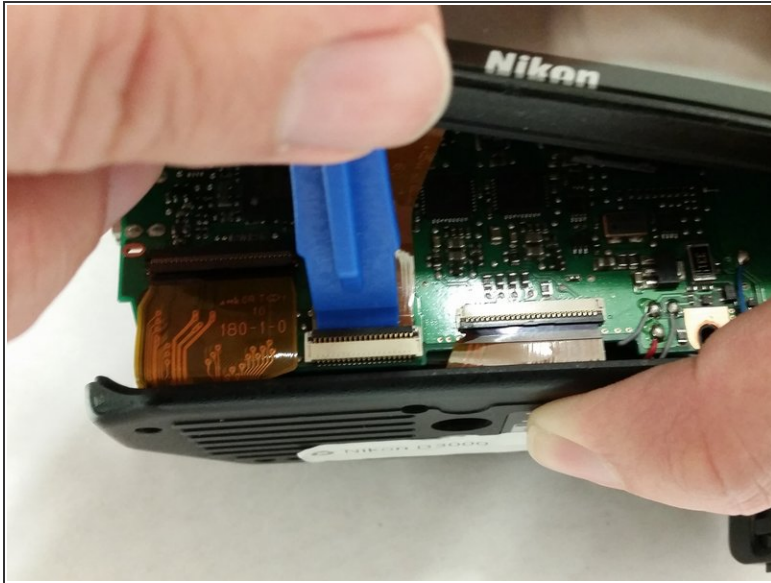
## Step 2



- Remove the two 3 mm x 5.5 mm Phillips head screws from the either side of the viewfinder.
- Remove four 3 mm x 5.5 mm Phillips head screws from the sides of the camera.
- Remove two 3 mm x 4 mm Phillips head screws from under the SD card door.



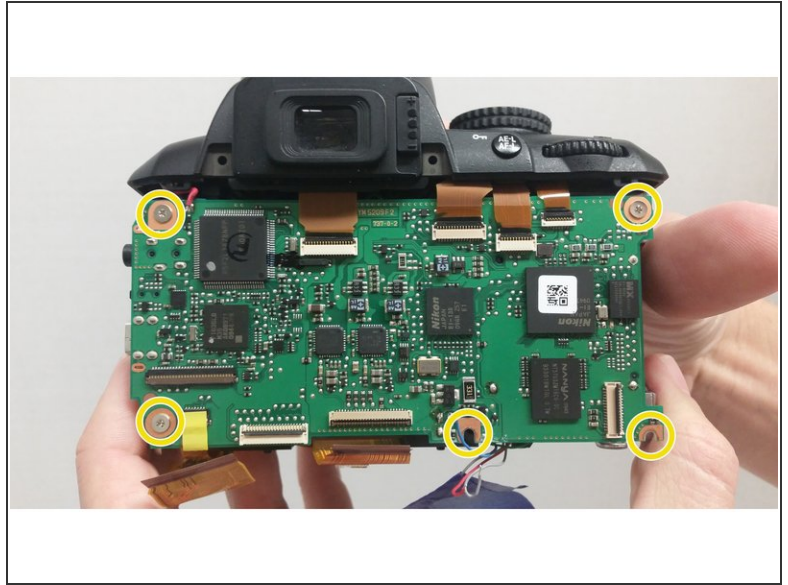
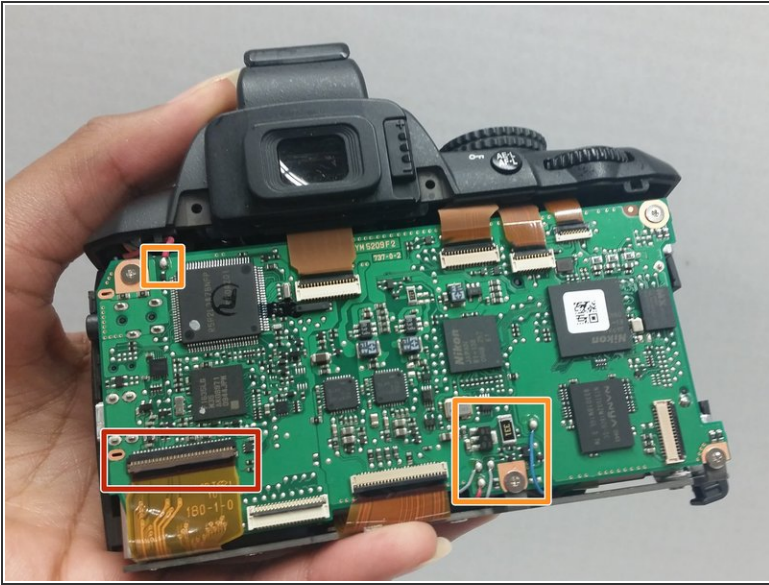
## Step 3



**i** Use the following process for removing all ribbon connectors.

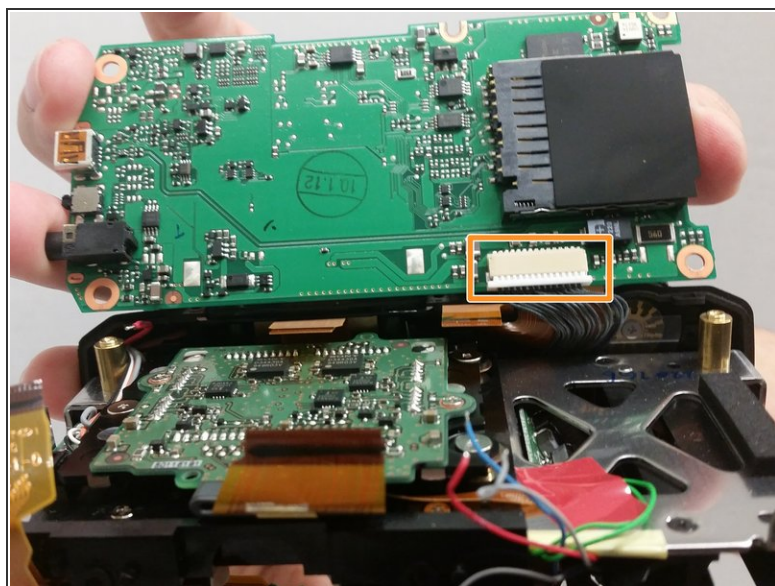
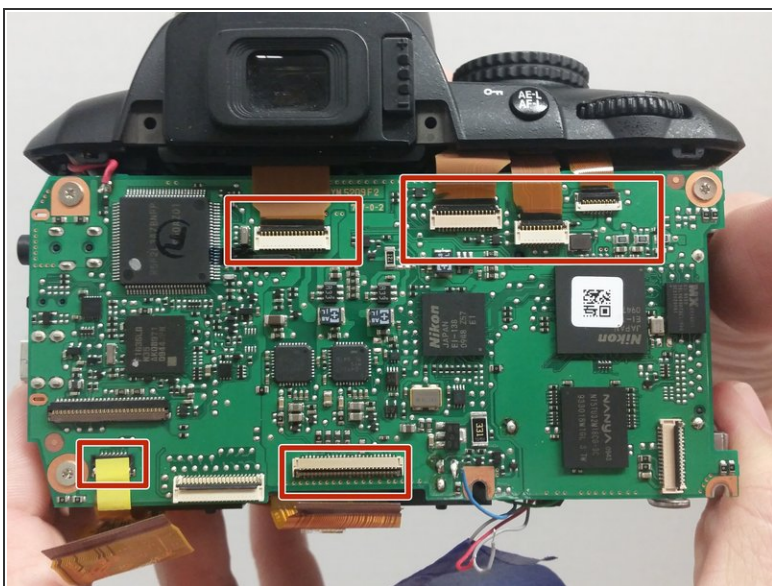
- Lift the back of the camera and, using the blue prying tool, lift the tab from the LCD ribbon connector.
- Slide the ribbon connector away from the bottom of the camera and remove the back cover containing the LCD to expose the motherboard.

## Step 4



- ⚠ Soldering irons are hot; take all necessary precautions to not burn yourself or equipment.
- 📌 Be sure to label each gray wire to be removed from the motherboard as they are the same color and can be mixed up during reassembly.
- Lift the tab on the ribbon connector and pull away the ribbon to expose a 4 mm x 4 mm Phillips head screw.
- De-solder the red (upper), two grey (lower), red (lower), and blue (lower) wires from the motherboard.
- Remove five 4 mm x 4 mm Phillips head screws holding the motherboard to the camera frame.

## Step 5



- Lift the tabs and pull away the ribbon connectors shown .
- Lift the motherboard and disconnect the grey connector from the bottom.
- Disconnect and remove the motherboard.

To reassemble your device, follow these instructions in reverse order.